

SF11 DECK SCALER

OPERATION & MAINTENANCE MANUAL



CONTENTS

INTRODUCTION	3
GENERAL INFORMATION	3
EU DECLARATION OF CONFORMITY	4
UKCA DECLARATION OF CONFORMITY	5
DECLARATION OF CONFORMITY	6
SAFETY	7
HAND ARM VIBRATION	7
WARRANTY	7
PRE START CHECKS (DAILY)	8
OPERATION	8
SUGGESTED LUBRICANTS	8
MACHINE STORAGE	8
SERVICING & MAINTENANCE	9
EXPLODED VIEW - SF11	10
PARTS LIST - SF11	11
TECHNICAL SPECIFICATIONS	12
TROUBLE SHOOTING	13
NOTES	13
NOTES	14
NOTES	15
CONTACT US	16

INTRODUCTION

Thank you for choosing a product by Trelawny SPT Ltd, an innovative leading brand in the Surface Preparation sector.

This product has been manufactured under stringent quality standards to meet superior performance criteria. This manual contains the necessary maintenance information for you to ensure proper operation and care for this equipment.

In the unlikely event that you experience a problem please do not hesitate to contact your local Trelawny dealer or agent. We always welcome feedback and comments from our valued customers.



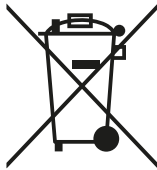
WARNING:

Carefully read through these original instructions before using your new TRELAWNY Equipment. Take special care to read warnings. TRELAWNY products have many features that will make your job faster and easier. Safety, performance, and dependability have been given top priority in the development of this product, making it easy to operate and maintain.



ENVIRONMENTAL PROTECTION:

The equipment, accessories and packaging should be sorted for environmentally friendly recycling. The plastic components are labelled for categorised recycling.



DISPOSAL:

Waste products should not be disposed of with household waste. Please recycle where facilities exist. Check with your local authority or retailer for recycling advice.

GENERAL INFORMATION

Before operating any TRELAWNY equipment, this manual must be read and understood by the operator, if in any doubt ask your supervisor before using this equipment. Failure to follow these instructions could result in damage to the equipment and/or personal injury.

Trelawny SPT Ltd disclaims all responsibility for damage to persons or objects arising as a consequence of incorrect handling of the equipment, failure to inspect the equipment

prior to starting work for damage or other faults that may influence the operation of safe working of the equipment, or failure to follow the safety regulations listed or applicable to the job site.

Operators should be familiar with the data given in the specification section. Please keep these instructions in a safe and accessible place.

EU DECLARATION OF CONFORMITY



EU Declaration of Conformity

We, **Trelawny SPT Ltd of 13 Highdown Road, Sydenham Industrial Estate, Leamington Spa, Warwickshire, CV31 1XT, GB** declare that the DoC is issued under our sole responsibility and belongs to the following product:

PART NUMBER.....
DESCRIPTION
SERIAL NUMBER
YEAR OF CONSTRUCTION



The object of the declaration described above is in conformity with the relevant **Union Harmonisation Legislation:**

- **2006/42/EC** Machinery Directive

The following harmonised standards and technical specifications have been applied:

- **EN ISO 11148-4:2012** Hand-held non-electric power tools — Safety requirements
Part 4: Non-rotary percussive power tools

Technical files are held by Indutrade Benelux BV, Anton Philipsweg 1, 1422 AL Uithoorn, Netherlands

Notified Body:
Not Applicable. Machinery is not listed under ANNEX IV of the Machinery Directive.

Place of Declaration:
Trelawny SPT Ltd, 13 Highdown Road, Sydenham Industrial Estate, Leamington Spa, Warwickshire, CV31 1XT, GB

Date of Declaration:
December 2024

Signed by:

Daniel Rowledge
Managing Director

UKCA DECLARATION OF CONFORMITY



UKCA Declaration of Conformity

We, **Trelawny SPT Ltd of 13 Highdown Road, Sydenham Industrial Estate, Leamington Spa, Warwickshire, CV31 1XT, GB** declare that the DoC is issued under our sole responsibility and belongs to the following product:

PART NUMBER

DESCRIPTION

SERIAL NUMBER

YEAR OF CONSTRUCTION

The object of the declaration described above is in conformity with the relevant **Statutory Requirements:**

- **2008 No. 1597** Supply of Machinery (Safety) Regulations 2008

The following designated standards and technical specifications have been applied:

- **BS EN ISO 11148-4:2012** Hand-held non-electric power tools — Safety requirements
Part 4: Non-rotary percussive power tools

Technical files are held by **Daniel Rowledge** at the Trelawny address stated above.

Approved Body:

Not Applicable. Machinery is not listed under ANNEX IV of the Machinery Directive.

Place of Declaration:

Trelawny SPT Ltd, 13 Highdown Road, Sydenham Industrial Estate, Leamington Spa, Warwickshire, CV31 1XT, GB

Date of Declaration:

December 2024

Signed by:

Daniel Rowledge
Managing Director

DECLARATION OF CONFORMITY

<p>CZ Prohlášení o přizpůsobení My, společnost Trelawny SPT Limited podávamej daňové přiznání, že výrobek a dodávka výrobku název výrobku Model, výrobní číslo Rok výroby Pro které se průkaz týkající, je přizpůsobení s zásobou od následující příkazov a jejich pohotovostní: 2006/42/EC Příkaz soustrojí 2014/35/EC Příkaz nízkého napětí (upotřebitelné jedině do výrobku použít elektrické energie)</p>	<p>LT ATITIKTIES DEKLARACIJA Mes, Trelawny SPT Limited Prisiidami visą atsakomybę deklaruojame, kad tiekiamas / gaminamas produktas Produkto pavadinimas Modelis, serijos numeris Pagaminimo Kuriam laikoma ši deklaracija, atitinka šių direktyvų, norminių aktų ir su jais susijusių, standartų reikalavimus: 2006/42/EC Įtarpinis direktyva 2014/35/EC Žemos įtampos direktyva (laikoma tik elektriniams įrengimams)</p>
<p>DE Übereinstimmungserklärung Wir, Trelawny SPT Limited erklären, dass unter unserer alleinigen Verantwortung für die Lieferung und Herstellung des Produktes Name des Produktes Model, Seriennummer Jahr der Herstellung auf welches sich dieses Dokument bezieht, stimmt mit den Vorgaben der folgenden Direktive, normativen Dokumente und deren jeweiligen Maßstäbe ein: 2006/42/EC Maschinieriedirektive 2014/35/EC Niederspannungsdirektive (nur zutreffend auf Produkte, die Strom benutzen)</p>	<p>MT DIKJARAZZJONI TA KONFORMITA Ahna, Trelawny SPT Limited Niddikjaraw li ahna responsabbli kompletament għal provista / maniffattura tal-prodott hawn 1msemmi: Isem Il-Prodott Mudell, Serial number Sena la 'produzzjoni Dan id-dokument magħmul għal prodott imsemmi hawn fuq, li huwa skond il-provizjonijiet imsemmija fid-dokumenti tal-klassi tax-xogħol: 2006/42/EC Machinery Directive 2014/35/EC Low Voltage Directive (tapplika biss għal prodotti li jahdmu bi-elekttriku)</p>
<p>DK Erklæring om overensstemmelse Vi, Trelawny SPT Limited Erklærer hermed at under vores ene forhandling ansvar for vores forhandling/produktion af produktet Produkt navn Model, serie nummer Produktionsår For hvilket dette dokument referer, at deler i overensstemmelse med bestemmelser af følgende direktiver, normative dokumenter og deres relevante standard: 2006/42/EC Machinery directive 2014/35/EC Low voltage directive</p>	<p>NL EENVORMIGHEIDSVERKLARING Wij, Trelawny SPT Limited Verklaeren dat wij de volledige verantwoordelijkheid dragen voor het leveren/fabriceren van het volgende product: Naam van het product Type, Serienummer Productiejaar En verklaaren dat het product waarnaar dit document verwijst eenvoudig is met de voorzieningen van de volgende Richtlijn(en), Normatieve Documenten en hun relevante Standaarden: 2006/42/EC MACHINERIECHTLIJN 2014/35/EC LAAGSPANNINGSRICHTLIJN (uitsluitend van toepassing bij producten die elektrische stroom gebruiken)</p>
<p>EE TOOTE VASTAVUSE DEKLARATSIOON Meie, Trelawny SPT Limited Deklareerime, et vastutame järgmise varustuse/toote müügi eest Toote nimetus Mudel, Seeria number Aegsita loodangu Arstul dokument lüendab toote vastavust järgmistele direktiividele, normatiividele ja nendega samaväärsetele standardidele: 2006/42/EC MASINA DIREKTIIVID 2014/35/EC MADALPINGE DIREKTIIVID (Kohandatakse vaid tootele, mis kasutavad elektrivoolu)</p>	<p>PL Deklaracja Zgodności My, Firma Trelawny SPT Limited. oświadczamy w naszej odpowiedzialności, że produkcja i dostawa urzadzzenia Nazwa produktu Model, numer seryjny Rok produkcji do którego ten dokument należy, jest zgodne z klauzulami następujących zarządzeń i ich istotnych standardów: 2006/42/EC Zarządzenie mechaniczne 2014/35/EC Zarządzenie niskiego napięcia elektrycznego (Zastosowanie tylko przy urządzeniach elektrycznych)</p>
<p>ES Declaración de Conformidad Nosotros, Trelawny SPT Limited Declaramos que bajo nuestra completa responsabilidad de la fabricación/suministro del producto Nombre del Producto Modelo, No de Serie Año de producción A quien este documento se refiere, está de acuerdo con lo relacionado en la Directriz, Normativa Documentada y sus relevantes standards: 2006/42/EC Directorio de Maquinaria 2014/35/EC Directorio de Bajo Voltaje (Aplicable solamente a productos que funcionen con electricidad)</p>	<p>PT DECLARAÇÃO DE CONFORMIDADE CE A empresa TRELAWNY SPT LIMITED Declara, sob sua inteira responsabilidade, que o fornecimento/fabrico do seguinte produto: Designação do produto Modelo, Número de Série Ano de produção a que esta declaração se refere, está em conformidade com o preceituado nas Directivas e Normas Comunitárias abaixo indicadas: 2006/42/EC DIRECTIVA DE MÁQUINAS 2014/35/EC DIRECTIVA DE BAIXA VOLTAGEM (Aplicável apenas a produtos que utilizam energia eléctrica)</p>
<p>FI ILMOITUSVAHVISTUS Me, Trelawny SPT Limited Valmistamme tuotteen toimittamisesta/valmistamisesta Tuotteen Malli, sarjanumero Valmistusvuosi Täällä todistuksella vahvistamme säädökset seuravien ohje/ohjesien, Yleisin papereihin ja niihin liittyvät vaatimukset: 2006/42/EC KONEISTON OHJEET 2014/35/EC PIENJÄNNITTE OHJEET (tarvitaan ainoastaan tuotelle jotka käyttävät sähkövoimaa)</p>	<p>RU СВИДЕТЕЛЬСТВО О СООТВЕТСТВИИ Мы, Trelawny SPT Limited Заявляем, что несем полную ответственность за поставку/производство нижеуказанной продукцией наименование изделия Модель, серийный номер Год выпуска на которую выдано настоящее Свидетельство, и которая соответствует положениям следующей(их) директиве(ы), нормативным документам и относящимся к ним стандартам: 2006/42/EC ДИРЕКТИВА ПО МЕХАНИЗМАМ 2014/35/EC ДИРЕКТИВА ПО НИЗКОВОЛЬТНОМУ ОБОРУДОВАНИЮ (распространяется только на изделия с электропитанием)</p>
<p>FR DÉCLARATION DE CONFORMITÉ Nous, soussignés Trelawny SPT Limited déclarons que le produit sous-nommé Nom du produit Modèle et Numéro de Série Année de production et pour lequel nous prenons entière responsabilité pour sa fourniture et manufacture, est conforme aux clauses des directives suivantes documents normatifs et normes qui s'y appliquent: 2006/42/EC DIRECTIVE POUR LA MACHINERIE 2014/35/EC DIRECTIVE POUR BAS VOLTAGE (n'est applicable qu'aux produits utilisant l'énergie électrique)</p>	<p>SE FÖRSÄKRAN OM ÖVERENSSTÄMMELSE VI, TRELAWNY SPT LIMITED FÖRKLARAR ATT VI MED ENSAMT ANSVAR ANSKAFFAT / TILLVERKAT PRODUKTEN PRODUKTNAMN MODELL och SERIE NUMMER Tillverkningsår TILL VILKEN DETTA DOKUMENT HÄNVISAR ÄR I ÖVERENSSTÄMMELSE MED FÖLJANDE DIREKTIV, NORMATIVA DOKUMENT OCH DERAS RELEVANTA STANDARDER 2006/42/EC MASKINDIREKTIV 2014/35/EC LÅGSTRÖMSDIREKTIV (TILLÄMPLIG PÅ ELEKTRISK DRIVNA PRODUKTER)</p>
<p>GR ΔΗΛΩΣΗ ΠΙΣΤΟΤΗΤΑΣ Η εταιρεία Trelawny Spt Limited Δηλώνει ότι έχει τη μοναδική ευθύνη ως κατασκευαστρια / προμηθευτρια του παρακάτω προϊόντος περιγραφη προϊόντος μοντέλο, αριθμός σειράς έτος παραγωγής και στο οποίο αναφέρεται αυτή η δήλωση, είναι συμβατό με τις προδιαγραφές που ορίζονται στις ακόλουθες Κοινοτικές Οδηγίες Ελεγκτικές Διατάξεις κι άλλες σχετικές προδιαγραφές 2006/42/EC ΟΔΗΓΙΑ ΠΕΡΙ ΜΗΧΑΝΗΜΑΤΩΝ 2014/35/EC ΟΔΗΓΙΑ ΠΕΡΙ ΧΑΜΗΛΗΣ ΤΑΣΗΣ (αφορά μόνον προϊόντα που λειτουργούν με ηλεκτρικό ρεύμα)</p>	<p>SI IZJAVA O SKLADNOSTI Trelawny SPT Limited pod polno odgovornostjo izjavljamo, da so spodaj navedeni proizvodi, ki jih dobavljamo/produčujemo: Ime proizvoda Model, serijska številka Leto proizvodnje na katere se ta dokument nanaša, proizvedeni v skladu z določili naslednjih direktiv, normativnih dokumentov in njihovih relevant- nih standardov: 2006/42/EC DIREKTIVA O STROJIH 2014/35/EC DIREKTIVA O STROJIH Z NIZKO VOLTAŽO (nanaša se samo na proizvode na električni pogon)</p>
<p>HU MEGFELELŐSÉGI NYILATKOZAT Mi, A "Trelawny SPT Limited" cég Felelősségünk tudatában kijelentjük, hogy mint a termék szállítója/gyártója Termék neve Típus, Sorozatszám Gyártási év amelyre jelen dokumentum vonatkozik, megfelel az alábbi Irányelv(ek), Irányadó Dokumentumok előírásainak, és az azokat meghatározó szabványoknak: 2006/42/EC GÉPÉSZETI IRÁNYELVEK 2014/35/EC KISFESZÜLTÉSŰ IRÁNYELVEK (Csak az elektromos meghajtású gépeknél)</p>	<p>TR UYGUNLUK BEYANI Trelawny SPT Limited Aşağıdaki, üretim ve tedarikinden tek başına sorumlu olduu ürünün Ürün adı Model/Seri no Üretim yılı bu belgenin ilgili olduu apaşğıdaki yönetmeliklerin, norm belgelerinin ve ilgili standartları'nın koşullarına uygun olduunu beyan eder: 2006/42/EC MAKİNALAR YÖNETMELİDİ 2014/35/EC DÜPÜK GERİLİM YÖNETMELİDİ (Yalnızca elektrikle çalıyan ürünlerde geçerlidir)</p>
<p>IT DICHIARAZIONE DI CONFORMITA La Società Trelawny SPT Limited Dichiaro, sotto la propria responsabilità, che la fornitura / produzione del prodotto Nome prodotto Modello, codice Anno di produzione a cui si riferisce tale documento è conforme alle seguenti Direttive, ai documenti della Normativa ed ai relativi standard: 2006/42/EC DIRETTIVA SULLE APPARECCHIATURE 2014/35/EC DIRETTIVA SUL BASSO VOLTAGGIO (applicabile esclusivamente per i prodotti che utilizzano energia elettrica)</p>	

SAFETY

DO:

- Wear personal protective equipment including safety goggles, footwear, ear defenders and gloves. In some environments it will be necessary to wear facemasks or breathing apparatus.
- Be aware that this equipment can create dust and flying debris.
- Keep hands, feet and clothing away from moving parts.
- Follow the prestart checks detailed in this manual.
- Ensure that the workplace is well ventilated.
- Be aware of others working around you.
- Always follow safe-working practices.
- Inspect the equipment prior to using.
- Store this equipment in a secure and dry environment.

DO NOT:

- Modify this equipment in any way. This will invalidate the warranty and could lead to serious injury.
- Allow the equipment to run unattended.
- Use petrol (gasoline), thinners or any other high flash point solvent to clean the equipment.
- Disassemble or repair unless Trelawny trained.
- Permanently fix the operating lever or button in the on/run position.

HAND ARM VIBRATION

Trelawny Equipment may cause hand-arm Vibration Syndrome injury if their use is not adequately managed.

We advise you to carry out a risk assessment and to implement measures such as; limiting exposure time [i.e. actual trigger time, not total time at work], job rotation, ensuring the tools are used correctly, ensuring the tools are maintained according to our recommendations, and ensuring that the operators wear personal protective equipment (PPE) particularly gloves and clothing to keep them warm and dry.

Employers should consider setting up a programme of health surveillance to establish a benchmark for each operator and to detect early symptoms of vibration injury.

We are not aware of any PPE that provides protection against vibration injury by attenuating vibration emissions.

See 'Specifications' section for vibration emission data.

Further advice is available from our Technical Department.

We strongly advise you to visit the Health & Safety Executive website <http://www.hse.gov.uk/vibration> - this site provides excellent advice and information on HAV and currently, includes a Hand-Arm Vibration Exposure Calculator that is easy to use to work out the daily vibration exposure for each of your operators.

WARRANTY

When you choose TRELAWNY, you're investing in a product engineered for strength, durability, and unwavering reliability. Our equipment is built to endure the toughest challenges, showcasing nearly 80 years of craftsmanship in Surface Preparation Technology. We take pride in being the industry benchmark, offering not just a tool but a lasting companion for tough jobs, backed by a 12-month warranty for peace of mind.

Register your TRELAWNY product within 30 days of purchase by scanning the QR code to activate your warranty and enjoy the full support from our team.

PLEASE RETAIN YOUR PROOF OF PURCHASE, AS IT WILL BE REQUIRED TO PROCESS ANY WARRANTY CLAIMS.

The following are not covered under the Trelawny warranty:

- Damage caused by abuse, misuse, dropping or other similar damage caused by or as a result of failure to follow assembly, operation or user maintenance instructions.
- Alterations, additions or repairs carried out by persons other than Trelawny or their recognised agents.

- Transportation costs to and from Trelawny or their recognised agents, for repair or assessment against a warranty claim, on any equipment.
- Materials and/or labour costs to renew, repair or replace components due to fair wear and tear.

In no case whatsoever shall the Customer be entitled to claim damages, in particular but not be limited, loss of profit and other direct or indirect or consequential damage. This exclusion of liability, however, does not apply to unlawful intent or gross negligence on our part, but does apply to unlawful intent or gross negligence of persons employed or appointed by us to perform any of his obligations.



All warranty claims should firstly be directed to Trelawny SPT Ltd. Please provide, part number, serial number and proof of purchase, either by telephone or E-mail.

Tel: +44 (0)1926 883781

Email : warranty@trelawny.com

PRE START CHECKS (DAILY)

- The compressed air must be free from water and dirt. Always clear the air hose before connecting to the tool.
- Ensure that no moisture (condensation) is present in the air hose.
- Ensure a minimum of 19mm (3/4") bore air hose is used and all couplings are secure, leak free and in good condition.
- Limit the length of air hose to 30M. Where extra length is necessary, for each additional 15M of air hose used, the pressure drop is approximately 0.21bar (3psi).
- For safe and efficient operation, the correct operating pressure is 6.2bar (90 psi).
- Do not let the operating pressure fall below 5.5bar (80psi) or rise above 6.9bar (100 psi).
- In particularly cold weather it is recommended that a proprietary anti-freeze lubricating oil is used.

OPERATION

Prior to operating the tool check:

That all parts of the tool are fully screwed/fitted together and secure, if you are in any doubt ask your supervisor before using this equipment.

That the air pressure is correct for this tool 6.2 bar (90 p.s.i.).

That a liberal amount of lubricant has been put into the air inlet of the tool. (See suggested lubricants)

Safe use of this tool requires a solid stance and secure foothold; the operator must adopt a firm and stable position at all times.

Remove the lifting pin from the bottom of the handle to release the handle, refit it to the block-lifting bracket to prevent its loss. Never run the tool with the handle fastened to the main body.

The most efficient scaling action is to move the tool back and forth until the desired finish has been achieved. Never run the tool continuously in the same place as this will severely mark the surface and may cause cutter head damage.

To operate the tool simply turn the ball valve so that the lever is in line with the handle. If the tool is new, optimum performance will be achieved after 15mins "running in" of the brush seals. Complete a small area noting the performance; stop the machine, inspect the finish produced.

To switch off, simply return the ball valve lever to 90° to the handle whilst continuing to move the tool back and forth.

The tool will ride irregularities of up to 5mm (1/4"). Anything greater will risk cutterhead damage. Care must be taken to avoid damaging or tripping over the air hose. Once the task is completed, return handle to the upright position and insert the handle-locking pin for transportation.

SUGGESTED LUBRICANTS

Oil the tool daily before use. Put a few drops of one of the following zinc free air tool lubricants through the air inlet:

SHELL S22 or R10, CASTROL Hyspin ZZ32

It is recommended that an inline lubricator be installed in the air hose adjacent to the tool.

Cleaning

If operation becomes unproductive and the piston shows signs of sticking, dismantle and clean with a highly refined paraffin.

Immediately after cleaning, thoroughly oil the tool with one of the recommended lubricants.

MACHINE STORAGE

Short period storage: up to 3 months

Clean outside of the equipment and inspect the consumable items for wear, replace any worn parts as required. Insert a liberal quantity of air tool through the air inlet and run briefly to ensure that the internal components are coated with oil. Cover and store the equipment in a dry location.

Long period storage: over 3 months

Follow instructions set out in 'short period storage'. Additionally lubricate any exposed moving parts with one of the suggested lubricants.

Repeat this process every 3 months.

SERVICING & MAINTENANCE

SERVICING

Only a competent person, in a suitably equipped workshop, must carry out maintenance. Disconnect the tool from the air supply before carrying out any of the following operations.

DISMANTLING

After ensuring that the air supply is turned off, remove the tool from the airline. Thoroughly clean the outside of the tool prior to dismantling.

Cutter head removal (Taper Fit Pistons):

Lay the machine down on its side. Unscrew and remove screwed cap (35). Remove spring cap (34) and spring (36). From the bottom of the unit push on the cutter head and remove the piston assembly. Repeat for all other cylinders. Place the head removal washer between the cutter head and the cylinder, place cylinder assembly on a flat solid surface with the cutter head upper most, insert the removal pin into the cutter head hole so that it rests on the end of the piston. Wearing safety glasses, deliver a sharp blow to the head of the pin with a medium sized hammer and the cutter head will be released from the piston.

Piston and Cylinder removal One Piece Pistons

Unscrew and remove screwed cap (35). Remove spring cap (34) and spring (36) from the bottom of the scaling head push up and remove the piston (33) cylinder (32) and brush seal (10) as an assembly. Repeat for all other cylinders.

Handle Assembly from Sub-Frame

Remove locking pin (7) to free handle. Lay tool down with hoses uppermost. Unscrew the connector on the hose (28) from the adaptor nearest to the scaling head. Select two 15/16" A/F spanners to fit bolt (18) and nut (20). Unscrew and remove both nut (20) and washer (19), withdraw bolt (18) and washer (19).

Sub-Frame from Scaling Head

Repeat the above, then select a 3/4" A/F spanner and unlock nut (17) unscrew nut and remove both nut and washer (16). Repeat for other side.

Lifting plate from Handle Assembly

Select a 13mm A/F spanner to suit nut (23) and a 6mm A/F Allen Key to suit cap head screw (21) and unlock screw (21). Remove washer (22) and repeat for other screw.

ASSEMBLY

Ensure all parts are clean and that all internal parts have a film of air tool oil, unless specified otherwise. Avoid lubricating oil contaminating the threads of the body, and the screw cap. These will require securing with a thread-locking adhesive. Replace any parts that show signs of wear. If the tool has been fully serviced it is recommended to change anti-vibration pads (14) and (15).

Cutter heads (Taper Fit Pistons)

Ensure that all traces of oil/grease are removed from the new cutter head taper and piston taper using a suitable oil free solvent. Fit the piston into the cylinder as shown in the service layout. Fit a new brush seal into the cylinder recess. Select a cutter head and place on to the taper of the piston. Place the assembly on to a solid flat surface, and with the cutter head uppermost, deliver a sharp blow with a soft faced hammer to seat the cutter head onto the piston taper.

(The use of a hard faced hammer will damage the tungsten carbide inserts).

Piston, Cylinder and Brush Seal - One piece pistons

Fit piston (33) into cylinder (32) as shown in the service layout. Fit new brush seal (10) over piston and into the recess on the cylinder.

Assembly of Scaling Head

Removal all traces of oil from screwed cap and cylinder block threads. Select a cutter head/piston/cylinder/brush seal assembly and apply a few drops of air tool oil to the top of the piston and fit into the body (2), repeat with the other assemblies. Fit spring (36) into a screwed cap (35) and fit spring cap (34) into screwed cap, as shown in the service layout. Apply a small bead of Loctite 243 (Threadloc) or its equivalent to the first two threads of the spring cap and screw down by hand, fully tighten the screwed cap using a suitable spanner, to a torque of 81.5 Nm (60 lb/ ft).

Handle to Sub-frame

Fit washer (19) to bolt (18) and align all holes through chassis and anti-vibration mountings (14) guide the bolt through until it appears at the other end. Fit washer (19) to threaded end of bolt and fit nut (20). To ensure that the sub-frame does not twist or buckle through over tightening of the nyloc nut (20), tighten so that not more than 3/8" (10mm) of thread it protruding from the nyloc nut (20). Select a 13mm A/F spanner to suit (23) and a 6mm A/F Allen key to suit caphead screw (21). Slacken off both bolts (21) and nuts (23) align the lifting plate (6) to the lifting block (3) and insert the locking pin (7). Ensure that the pin hole is central and the locking pin can be removed and inserted easily, adjust as necessary.

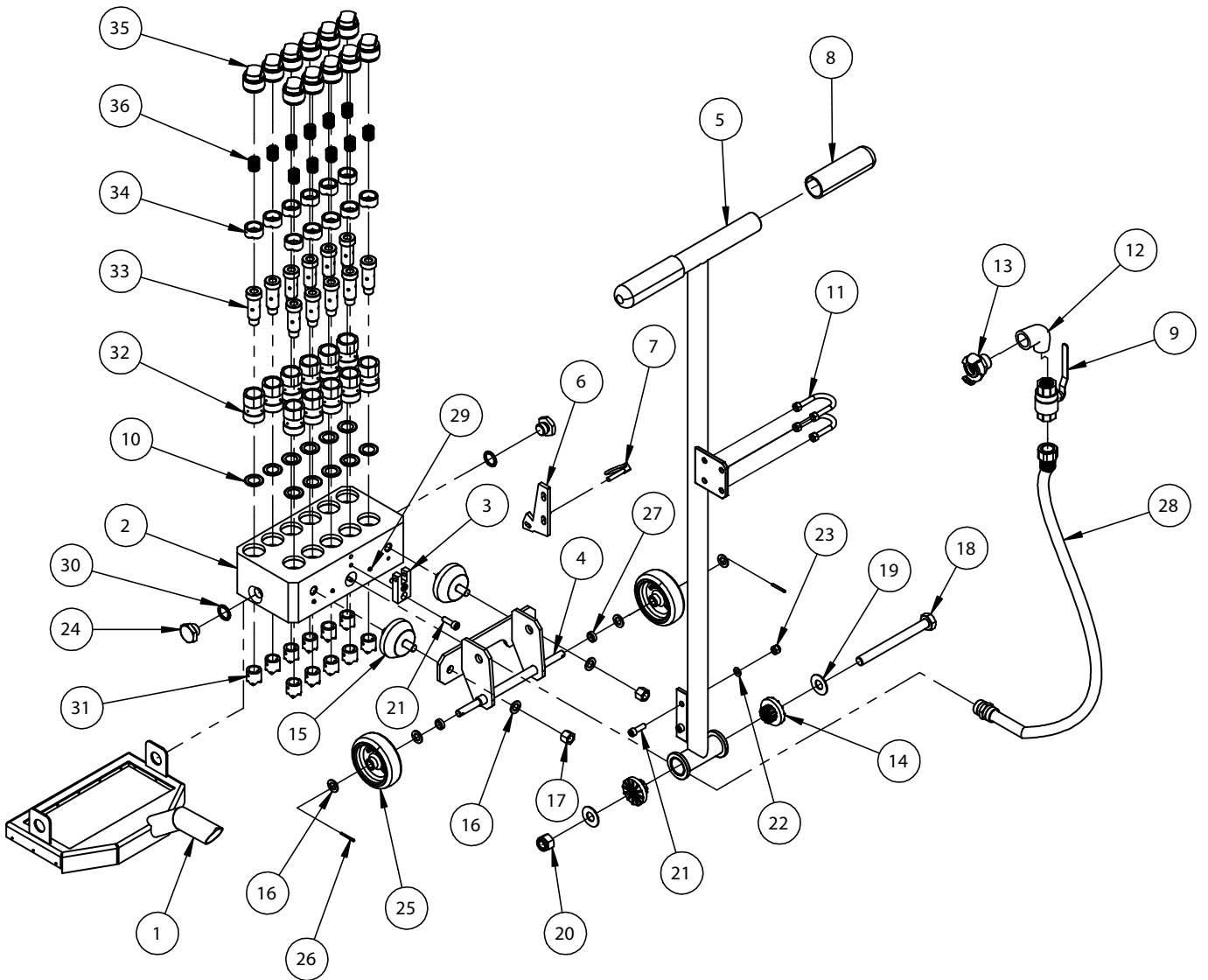
Sub-frame to Scaling Head

Align mounting holes on sub-frame (4) with anti-vibration pad (15) studs and fit as shown in service layout. Fit washer (16) and locknut (17) to both studs and fasten both nuts down to a torque of 40lb ft

Lifting Plate

Align holes in the lifting plate with the holes on that of the lifting plate flange, ensuring that the position of the lifting plate (6) is central to the main handle (5). Insert the bolt (21) and fit a washer (22) and nut (23). Fit the handle-locking pin (7). Select a 13mm A/F spanner to suit (23) and a 6mm A/F Allen key to suit caphead screw (21). Tighten both nut and bolts (23) & (21) ensuring that the pin hole is central and the locking pin can be removed and inserted easily.

EXPLODED VIEW - SF11



PARTS LIST - SF11

ITEM NO.	PART NO.	DESCRIPTION	QUANTITY
1	437.0100	Shroud Assembly SF11 TVS	1
2	611.0110	SF11 Cylinder Block - Red	1
3	652.0110	Bracket Lifting M H Scaler	1
4	440.0130	Sub-frame Assy SF11 Std Duty	1
5	422.0110	SF11 Handle Assembly - Red	1
6	736.1004	Plate Lifting SF11	1
7	832.1000	Pin Lifting 1/4" Dia C/W Ring	1
8	717.5310	Handle Grip SF11 Blanked End	2
9	828.1005	3/4" Ball Valve Female BSPP x Male BSPT	1
10	614.5301	Brush Seal Nylon	11
11	831.2000	M8 x 62 x 43mm U-Bolt Assy	2
12	342.HY13	Adaptor 90 Bend M/F Hydraflex	1
13	843.0775	Claw coupling 3/4"BSP male	1
14	830.1000	Mounting Pad Axle	2
15	830.2000	Mounting Pad 1/2" UNF	2
16	812.0500	1/2" Plain Washer	6
17	834.0500	Nut 1/2" UNF Nyloc	2
18	831.1000	M16 x 170mm Hex Head Bolt	1
19	812.0625	5/8" Plain Washer	2
20	824.1600	M16 Nyloc Nut	1
21	806.0825	M8 x 25mm Cap Head Bolt	4
22	812.1080	M8 Plain Washer	2
23	824.0800	M8 Nyloc Nut	2
24	634.5301	Plug - Hex Triple Scaler	2
25	833.1005	SF11 Wheel	2
26	832.2000	Pin Split 1/8" x 1 1/4" Lg	2
27	617.9001	SF11 Wheel Spacer	2
28	719.0750	3/4" Armoured Hose	1
29	818.0606	Blanking Plug - 6mm Dia	10
30	810.9001	Sealing Washer 1/2"BSP	2
31	426.5351	Scaler Head Carbide X Form	11
32	613.5301	Cylinder Scaling Hammer	11
33	612.5301	Piston Scaling Hammer Std	11
34	615.5361	Cap - Spring Scaling Hammer	11
35	615.5341	Cap - Screwed Scaling Hammer	11
36	712.5301	Spring Recoil S/Hammer	11
ITEMS NOT SHOWN			
N/A	446.1540	SF11 Service Kit Inc: 10,31,33,34,35,36, Extractor Pin & Extractor Plate	1
N/A	843.0752	3/4" Air Hose with Claw Couplings 15m	1
N/A	859.1580	3/4" BSP Lubricator - Trelawny	1
N/A	458.1580	3/4" BSP Inline Oiler Assembly	1
N/A	827.0428	Extractor pin 4 x 28mm Long	1
N/A	633.5301	Extractor Plate	1

TECHNICAL SPECIFICATIONS

DETAIL	MODEL
Part Code	159.5910
Description	SF11 Scaling Hammer c/w Shroud
Blows per minute	3000 x 11
Air Consumption	33.0 l/s (70.0 cfm)
Air hose bore	19mm (0.75")
Length	180mm
Width	285mm
Height	1230mm
Weight	38kg
Cutting width	252mm
Cutting width to edge	15mm
Noise L _{PA} SPL	103.1 dB (A)
Noise L _{WA} SWL	113.1 dB (A)
Vibration (AEQ)*	5.8m/s (K= +40% -0%)
Trelawny SPT Ltd operates a policy of continuous product development and refinement and therefore reserves the right to change technical specifications and product designs without giving prior notice.	

Noise Levels measured in accordance with:
BS EN ISO 15744:2008

Vibration levels measured in accordance with:
BS EN ISO 20643:2008+A1:2012

(k) Equals the factor of uncertainty, which allows for variations in measurement and production. Vibration Data figures are tri-axial, which gives the total vibration emission. Because of various factors, the range of vibration emission during intended use can vary.

The vibration is dependent on the task, the operators grip, and feed force employed etc.

This equipment has been designed and produced in accordance with the following directive:
2006/42/EC Machinery Directive
and applicable harmonised standard; EN ISO 11148-4:2012

If your company has any problem with our products or would like to discuss the possibility of an improvement being made to them, then please do not hesitate to contact us. Your comments are both important and appreciated.

Trelawny tools are thoroughly tested under specified conditions in accordance with applicable internationally recognised standards. When a tool is used on site the conditions may not be the same as those used in our tests.

Trelawny Surface Preparation Technology operates a policy of continuous product development and refinement and therefore reserves the right to change technical specifications and product designs without giving prior notice.

All rights reserved. Any unauthorised use or copying of the contents or part thereof is prohibited. This applies to trademarks, model denominations, part numbers and drawings.

Use only genuine Trelawny consumables with this product. The use of non-Trelawny spare parts invalidates the warranty.

THE PERFECT FINISH
STARTS WITH
TRELAWNY



DEALER STAMP:



CONTACT US

Trelawny SPT Limited

Trelawny House, 13 Highdown Road, Sydenham Industrial Estate,
Leamington Spa, Warwickshire, CV31 1XT, United Kingdom

Telephone: +44 (0)1926 883781

Email: sales@trelawny.com

Website: www.trelawny.com

Manual Part Number:

735.0110 01

CERTIFIED
ISO 9001



0008