

B/BPG NEEDLE & CHISEL SCALERS

OPERATION & MAINTENANCE MANUAL



CONTENTS

INTRODUCTION	3
GENERAL INFORMATION	3
EU DECLARATION OF CONFORMITY	4
UKCA DECLARATION OF CONFORMITY	5
DECLARATION OF CONFORMITY	6
SAFETY	7
HAND ARM VIBRATION	7
WARRANTY	7
PRE START CHECKS (DAILY)	8
OPERATION	8
SUGGESTED LUBRICANTS	8
MACHINE STORAGE	8
SERVICING & MAINTENANCE	9
EXPLODED VIEW - 1B NEEDLE SCALER	10
PARTS LIST - 1B NEEDLE SCALER	11
EXPLODED VIEW - 1B CHISEL SCALER	12
PARTS LIST - 1B CHISEL SCALER	13
EXPLODED VIEW - 2B NEEDLE SCALER	14
PARTS LIST - 2B NEEDLE SCALER	15
EXPLODED VIEW - 2B CHISEL SCALER	16
PARTS LIST - 2B CHISEL SCALER	17
EXPLODED VIEW - 2BPG NEEDLE SCALER	18
PARTS LIST - 2BPG NEEDLE SCALER	19
EXPLODED VIEW - 2BPG CHISEL SCALER	20
PARTS LIST - 2BPG CHISEL SCALER	21
EXPLODED VIEW - 3BPG NEEDLE SCALER	22
PARTS LIST - 3BPG NEEDLE SCALER	23
EXPLODED VIEW - 3BPG CHISEL SCALER	24
PARTS LIST - 3BPG CHISEL SCALER	25
TECHNICAL SPECIFICATIONS	26
TROUBLE SHOOTING	27
NOTES	27
CONTACT US	28

INTRODUCTION

Thank you for choosing a product by Trelawny SPT Ltd, an innovative leading brand in the Surface Preparation sector.

This product has been manufactured under stringent quality standards to meet superior performance criteria. This manual contains the necessary maintenance information for you to ensure proper operation and care for this equipment.

In the unlikely event that you experience a problem please do not hesitate to contact your local Trelawny dealer or agent. We always welcome feedback and comments from our valued customers.



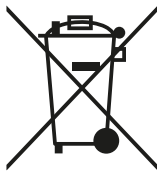
WARNING:

Carefully read through these original instructions before using your new TRELAWNY Equipment. Take special care to read warnings. TRELAWNY products have many features that will make your job faster and easier. Safety, performance, and dependability have been given top priority in the development of this product, making it easy to operate and maintain.



ENVIRONMENTAL PROTECTION:

The equipment, accessories and packaging should be sorted for environmentally friendly recycling. The plastic components are labelled for categorised recycling.



DISPOSAL:

Waste products should not be disposed of with household waste. Please recycle where facilities exist. Check with your local authority or retailer for recycling advice.

GENERAL INFORMATION

Before operating any TRELAWNY equipment, this manual must be read and understood by the operator, if in any doubt ask your supervisor before using this equipment. Failure to follow these instructions could result in damage to the equipment and/or personal injury.

Trelawny SPT Ltd disclaims all responsibility for damage to persons or objects arising as a consequence of incorrect handling of the equipment, failure to inspect the equipment

prior to starting work for damage or other faults that may influence the operation of safe working of the equipment, or failure to follow the safety regulations listed or applicable to the job site.

Operators should be familiar with the data given in the specification section. Please keep these instructions in a safe and accessible place.

EU DECLARATION OF CONFORMITY



EU Declaration of Conformity

We, **Trelawny SPT Ltd of 13 Highdown Road, Sydenham Industrial Estate, Leamington Spa, Warwickshire, CV31 1XT, GB** declare that the DoC is issued under our sole responsibility and belongs to the following product:

PART NUMBER

DESCRIPTION

SERIAL NUMBER

YEAR OF CONSTRUCTION

The object of the declaration described above is in conformity with the relevant **Union Harmonisation Legislation:**

- **2006/42/EC** Machinery Directive

The following harmonised standards and technical specifications have been applied:

- **EN ISO 11148-4:2012** Hand-held non-electric power tools — Safety requirements
Part 4: Non-rotary percussive power tools

Technical files are held by Indutrade Benelux BV, Anton Philipsweg 1, 1422 AL Uithoorn, Netherlands

Notified Body:

Not Applicable. Machinery is not listed under ANNEX IV of the Machinery Directive.

Place of Declaration:

Trelawny SPT Ltd, 13 Highdown Road, Sydenham Industrial Estate, Leamington Spa, Warwickshire, CV31 1XT, GB

Date of Declaration:

December 2024

Signed by:

Daniel Rowledge
Managing Director

UKCA DECLARATION OF CONFORMITY



UKCA Declaration of Conformity

We, **Trelawny SPT Ltd of 13 Highdown Road, Sydenham Industrial Estate, Leamington Spa, Warwickshire, CV31 1XT, GB** declare that the DoC is issued under our sole responsibility and belongs to the following product:

PART NUMBER

DESCRIPTION

SERIAL NUMBER

YEAR OF CONSTRUCTION

The object of the declaration described above is in conformity with the relevant **Statutory Requirements:**

- **2008 No. 1597** Supply of Machinery (Safety) Regulations 2008

The following designated standards and technical specifications have been applied:

- **BS EN ISO 11148-4:2012** Hand-held non-electric power tools — Safety requirements
Part 4: Non-rotary percussive power tools

Technical files are held by **Daniel Rowledge** at the Trelawny address stated above.

Approved Body:

Not Applicable. Machinery is not listed under ANNEX IV of the Machinery Directive.

Place of Declaration:

Trelawny SPT Ltd, 13 Highdown Road, Sydenham Industrial Estate, Leamington Spa, Warwickshire, CV31 1XT, GB

Date of Declaration:

December 2024

Signed by:



Daniel Rowledge
Managing Director

DECLARATION OF CONFORMITY

<p>CZ Prohlášení o přizpůsobení My, společnost Trelawny SPT Limited podávamej daňové přiznání, že výrobek a dodávka výrobku název výrobku Model, výrobní číslo Rok výroby Pro které se průkaz týkající, je přizpůsobení s zásobou od následující příkazov a jejich pohotovosti: 2006/42/EC Příkaz soustrojí 2014/35/EC Příkaz nízkého napětí (upotřebitelné jedině do výrobku použít elektrické energie)</p>	<p>LT ATITIKTIES DEKLARACIJA Mes, Trelawny SPT Limited Prisiidami visą atsakomybę deklaruojame, kad tiekiamas / gaminamas produktas Produkto pavadinimas Modelis, serijos numeris Pagaminimo Kuriam laikoma ši deklaracija, atitinka šių direktyvų, norminių aktų ir su jais susijusių, standartų reikalavimus: 2006/42/EC Įrangos direktyva 2014/35/EC Žemos įtampos direktyva (laikoma tik elektriniams įrengimams)</p>
<p>DE Übereinstimmungserklärung Wir, Trelawny SPT Limited erklären, dass unter unserer alleinigen Verantwortung für die Lieferung und Herstellung des Produktes Name des Produktes Model, Seriennummer Jahr der Herstellung auf welches sich dieses Dokument bezieht, stimmt mit den Vorgaben der folgenden Direktive, normativen Dokumente und deren jeweiligen Masstabe ein: 2006/42/EC Maschineriedirektive 2014/35/EC Niederspannungsrichtlinie (nur zutreffend auf Produkte, die Strom benutzen)</p>	<p>MT DIKJARAZZJONI TA KONFORMITA Ahna, Trelawny SPT Limited Niddikjaraw li ahna responsabbli kompletament għal provista / manifattura tal-prodott hawn 1msemmi: Isem Il-Prodott Mudell, Serial number Sena la 'produzzjoni Dan id-dokument magħmul għal prodott imsemmi hawn fuq, li huwa skond il-provizjonijiet imsemmija fid-dokumenti tal-klassi tax-xogħol: 2006/42/EC Machinery Directive 2014/35/EC Low Voltage Directive (tapplika biss għal prodotti li jahdmu bi-elektriku)</p>
<p>DK Erklæring om overensstemmelse Vi, Trelawny SPT Limited Erklærer hermed at under vores ene forhandling ansvar for vores forhandling/produktion af produktet Produkt navn Model, serie nummer Produktionsår For hvilket dette dokument referer, at der er overensstemmelse med bestemmelser af følgende direktiver, normative dokumenter og deres relevante standard: 2006/42/EC Machinery directive 2014/35/EC Low voltage directive</p>	<p>NL EENVORMIGHEIDSVERKLARING Wij, Trelawny SPT Limited Verklaaren dat wij de volledige verantwoordelijkheid dragen voor het leveren/fabriceren van het volgende product: Naam van het product Type, Serienummer Productiejaar En verklaaren dat het product waarnaar dit document verwijst eenvoudig is met de voorzieningen van de volgende Richtlijn(en), Normatieve Documenten en hun relevante Standaarden: 2006/42/EC MACHINERIECHTLIJN 2014/35/EC LAAGSPANNINGSRICHTLIJN (uitsluitend van toepassing bij producten die elektrische stroom gebruiken)</p>
<p>EE TOOTE VASTAVUSE DEKLARATSIOON Meie, Trelawny SPT Limited Deklareerime, et vastutame järgmise varustuse/toote müügi eest Toote nimetus Mudel, Seeria number Aegsita loodärgu Arstul dokument lüendab toote vastavust järgmistele direktiivide/lele, normatiividele ja nendega samaväärsetele standarditele: 2006/42/EC MASINA DIREKTIIVID 2014/35/EC MADALPINGE DIREKTIIVID (Kohandatakse vaid tootele, mis kasutavad elektrivoolu)</p>	<p>PL Deklaracja Zgodności My, Firma Trelawny SPT Limited. oświadczamy w naszej odpowiedzialności, że produkcja i dostawa urzadzzenia Nazwa produktu Model, numer seryjny Rok produkcji do którego ten dokument należy, jest zgodne z klauzulami następujących zarządzeń i ich istotnych standardów: 2006/42/EC Zarządzenie mechaniczne 2014/35/EC Zarządzenie niskiego napięcia elektrycznego (Zastosowanie tylko przy urządzeniach elektrycznych)</p>
<p>ES Declaración de Conformidad Nosotros, Trelawny SPT Limited Declaramos que bajo nuestra completa responsabilidad de la fabricación/suministro del producto Nombre del Producto Modelo, No de Serie Año de producción A quien este documento se refiere, está de acuerdo con lo relacionado en la Directriz, Normativa Documentada y sus relevantes standards: 2006/42/EC Directorio de Maquinaria 2014/35/EC Directorio de Bajo Voltaje (Aplicable solamente a productos que funcionen con electricidad)</p>	<p>PT DECLARAÇÃO DE CONFORMIDADE CE A empresa TRELAWNY SPT LIMITED Declara, sob sua inteira responsabilidade, que o fornecimento/fabrico do seguinte produto: Designação do produto Modelo, Número de Série Ano de produção a que esta declaração se refere, está em conformidade com o preceituado nas Directivas e Normas Comunitárias abaixo indicadas: 2006/42/EC DIRECTIVA DE MÁQUINAS 2014/35/EC DIRECTIVA DE BAIXA VOLTAGEM (Aplicável apenas a produtos que utilizam energia eléctrica)</p>
<p>FI ILMOITUSVAHVISTUS Me, Trelawny SPT Limited Valmistämme tuotteen toimittamisesta/valmistamisesta Tuotteen nimi Malli, sarjanumero Valmistusvuosi Täällä todistuksella vahvistamme säädökset seuravien ohje/ohjesien, Yleisin papereihin ja niihin liittyvät vaatimukset: 2006/42/EC KONEISTON OHJEET 2014/35/EC PIENJÄNNITTE OHJEET (tarvitaan ainoastaan tuotteille jotka käyttävät sähkövoimaa)</p>	<p>RU СВИДЕТЕЛЬСТВО О СООТВЕТСТВИИ Мы, Trelawny SPT Limited Заявляем, что несем полную ответственность за поставку/производство нижеуказанной продукции Наименование изделия Модель, серийный номер Год выпуска на которую выдано настоящее Свидетельство, и которая соответствует положениям следующей(их) директиве(ы), нормативным документам и относящимся к ним стандартам: 2006/42/EC ДИРЕКТИВА ПО МЕХАНИЗМАМ 2014/35/EC ДИРЕКТИВА ПО НИЗКОВОЛЬТНОМУ ОБОРУДОВАНИЮ (распространяется только на изделия с электропитанием)</p>
<p>FR DÉCLARATION DE CONFORMITÉ Nous, soussignés Trelawny SPT Limited déclarons que le produit sous-nommé Nom du produit Modèle et Numéro de Série Année de production et pour lequel nous prenons entière responsabilité pour sa fourniture et manufacture, est conforme aux clauses des directives suivantes documents normatifs et normes qui s'y appliquent: 2006/42/EC DIRECTIVE POUR LA MACHINERIE 2014/35/EC DIRECTIVE POUR BAS VOLTAGE (n'est applicable qu'aux produits utilisant l'énergie électrique)</p>	<p>SE FÖRSÄKRAN OM ÖVERENSSTÄMMELSE VI, TRELAWNY SPT LIMITED FÖRKLARAR ATT VI MED ENSAMT ANSVAR ANSKAFFAT / TILLVERKAT PRODUKTEN PRODUKTNAMN MODELL och SERIE NUMMER Tillverkningsår TILL VILKEN DETTA DOKUMENT HÄNVISAR ÄR I ÖVERENSSTÄMMELSE MED FÖLJANDE DIREKTIV, NORMATIVA DOKUMENT OCH DERAS RELEVANTA STANDARDER 2006/42/EC MASKINDIREKTIV 2014/35/EC LÅGSTRÖMSDIREKTIV (TILLÄMPLIG PÅ ELEKTRISK DRIVNA PRODUKTER)</p>
<p>GR ΔΗΛΩΣΗ ΠΙΣΤΟΤΗΤΑΣ Η εταιρεία Trelawny Spt Limited Δηλώνει ότι έχει τη μοναδική ευθύνη ως κατασκευαστρια / προμηθευτρια του παρακάτω προϊόντος περιγραφη προϊόντος μοντέλο, αριθμός σειράς έτος παραγωγής και στο οποίο αναφέρεται αυτή η δήλωση, είναι συμβατό με τις προδιαγραφές που ορίζονται στις ακόλουθες Κοινοτικές Οδηγίες Ελεγκτικές Διατάξεις κι άλλες σχετικές προδιαγραφές 2006/42/EC ΟΔΗΓΙΑ ΠΕΡΙ ΜΗΧΑΝΗΜΑΤΩΝ 2014/35/EC ΟΔΗΓΙΑ ΠΕΡΙ ΧΑΜΗΛΗΣ ΤΑΣΗΣ (αφορά μόνον προϊόντα που λειτουργούν με ηλεκτρικό ρεύμα)</p>	<p>SI IZJAVA O SKLADNOSTI Trelawny SPT Limited pod polno odgovornostjo izjavljamo, da so spodaj navedeni proizvodi, ki jih dobavljamo/producirajamo: Ime proizvoda Model, serijska številka Leto proizvodnje na katere se ta dokument nanaša, proizvedeni v skladu z določili naslednjih direktiv, normativnih dokumentov in njihovih relevant- nih standardov: 2006/42/EC DIREKTIVA O STROJIH 2014/35/EC DIREKTIVA O STROJIH Z NIZKO VOLTAŽO (nanaša se samo na proizvode na električni pogon)</p>
<p>HU MEGFELELŐSÉGI NYILATKOZAT Mi, A "Trelawny SPT Limited" cég Felelősségünk tudatában kijelentjük, hogy mint a termék szállítója/gyártója Termék neve Típus, Sorozatszám Gyártási év amelyre jelen dokumentum vonatkozik, megfelel az alábbi Irányelv(ek), Irányadó Dokumentumok előírásainak, és az azokat meghatározó szabványoknak: 2006/42/EC GÉPÉSZETI IRÁNYELVEK 2014/35/EC KISFESZÜLTÉSŰ IRÁNYELVEK (Csak az elektromos meghajtású gépeknél)</p>	<p>TR UYGUNLUK BEYANI Trelawny SPT Limited Aşağıdaki, üretim ve tedarikinden tek başına sorumlu olduu ürünün Ürün adı Model/Seri no Üretim yılı bu belgenin ilgili olduu aşağıdaki yönetmeliklerin, norm belgelerinin ve ilgili standartları/nyın koşullarına uygun olduunu beyan eder: 2006/42/EC MAKYNALAR YÖNETMELYDY 2014/35/EC DÜPÜK GERİLİM YÖNETMELYDY (Yalnızca elektrikle çalyan ürünlerde geçerlidir)</p>
<p>IT DICHIARAZIONE DI CONFORMITA La Società Trelawny SPT Limited Dichiaro, sotto la propria responsabilità, che la fornitura / produzione del prodotto Nome prodotto Modello, codice Anno di produzione a cui si riferisce tale documento è conforme alle seguenti Direttive, ai documenti della Normativa ed ai relativi standard: 2006/42/EC DIRETTIVA SULLE APPARECCHIATURE 2014/35/EC DIRETTIVA SUL BASSO VOLTAGGIO (applicabile esclusivamente per i prodotti che utilizzano energia elettrica)</p>	

SAFETY

DO:

- Wear personal protective equipment including safety goggles, footwear, ear defenders and gloves. In some environments it will be necessary to wear facemasks or breathing apparatus.
- Be aware that this equipment can create dust and flying debris.
- Keep hands, feet and clothing away from moving parts.
- Follow the prestart checks detailed in this manual.
- Ensure that the workplace is well ventilated.
- Be aware of others working around you.
- Always follow safe-working practices.
- Inspect the equipment prior to using.
- Store this equipment in a secure and dry environment.

DO NOT:

- Modify this equipment in any way. This will invalidate the warranty and could lead to serious injury.
- Allow the equipment to run unattended.
- Drag this tool by the air hose.
- Use in potentially explosive environments.
- Use petrol (gasoline), thinners or any other high flash point solvent to clean the equipment.
- Disassemble or repair unless Trelawny trained.
- Permanently fix the operating lever or button in the on/run position.

HAND ARM VIBRATION

Trelawny Equipment may cause hand-arm Vibration Syndrome injury if their use is not adequately managed.

We advise you to carry out a risk assessment and to implement measures such as; limiting exposure time [i.e. actual trigger time, not total time at work], job rotation, ensuring the tools are used correctly, ensuring the tools are maintained according to our recommendations, and ensuring that the operators wear personal protective equipment (PPE) particularly gloves and clothing to keep them warm and dry.

Employers should consider setting up a programme of health surveillance to establish a benchmark for each operator and to detect early symptoms of vibration injury.

We are not aware of any PPE that provides protection against vibration injury by attenuating vibration emissions.

See 'Specifications' section for vibration emission data.

Further advice is available from our Technical Department.

We strongly advise you to visit the Health & Safety Executive website <http://www.hse.gov.uk/vibration> - this site provides excellent advice and information on HAV and currently, includes a Hand-Arm Vibration Exposure Calculator that is easy to use to work out the daily vibration exposure for each of your operators.

WARRANTY

When you choose TRELAWNY, you're investing in a product engineered for strength, durability, and unwavering reliability. Our equipment is built to endure the toughest challenges, showcasing nearly 80 years of craftsmanship in Surface Preparation Technology. We take pride in being the industry benchmark, offering not just a tool but a lasting companion for tough jobs, backed by a 12-month warranty for peace of mind.

Register your TRELAWNY product within 30 days of purchase by scanning the QR code to activate your warranty and enjoy the full support from our team.

PLEASE RETAIN YOUR PROOF OF PURCHASE, AS IT WILL BE REQUIRED TO PROCESS ANY WARRANTY CLAIMS.

The following are not covered under the Trelawny warranty:

- Damage caused by abuse, misuse, dropping or other similar damage caused by or as a result of failure to follow assembly, operation or user maintenance instructions.
- Alterations, additions or repairs carried out by persons other than Trelawny or their recognised agents.

- Transportation costs to and from Trelawny or their recognised agents, for repair or assessment against a warranty claim, on any equipment.
- Materials and/or labour costs to renew, repair or replace components due to fair wear and tear.

In no case whatsoever shall the Customer be entitled to claim damages, in particular but not be limited, loss of profit and other direct or indirect or consequential damage. This exclusion of liability, however, does not apply to unlawful intent or gross negligence on our part, but does apply to unlawful intent or gross negligence of persons employed or appointed by us to perform any of his obligations.



All warranty claims should firstly be directed to Trelawny SPT Ltd. Please provide, part number, serial number and proof of purchase, either by telephone or E-mail.

Tel: +44 (0)1926 883781

Email : warranty@trelawny.com

PRE START CHECKS (DAILY)

- The compressed air must be free from water and dirt. Always clear the air hose before connecting to the tool.
- Ensure that no moisture (condensation) is present in the air hose.
- Ensure a minimum of 10mm (3/8") bore air hose is used and all couplings are secure, leak free and in good condition.
- Limit the length of air hose to 30M. Where extra length is necessary, for each additional 15M of air hose used, the pressure drop is approximately 0.21bar (3psi).
- For safe and efficient operation, the correct operating pressure is 6.2bar (90 psi).
- Do not let the operating pressure fall below 5.5bar (80psi) or rise above 6.9bar (100 psi).
- In particularly cold weather it is recommended that a proprietary anti-freeze lubricating oil is used.

OPERATION

Prior to operating the tool check:

That all parts of the tool are fully screwed/fitted together and secure, if you are in any doubt ask your supervisor before using this equipment.

That the air pressure is correct for this tool 6.2 bar (90 p.s.i.).

That a liberal amount of lubricant has been put into the air inlet of the tool. (See suggested lubricants)

Safe use of this tool requires a solid stance and secure foothold, the tool may be used in other postures but care must be taken that the operator adopts a firm and stable position.

Maintain contact with the work surface with sufficient pressure only to keep the tool from bouncing.

Excessive operator pressure will not improve the tool efficiency but could cause premature tool failure and operator fatigue.

To operate the tool, pull the throttle lever towards the handle and then apply the needles/Chisel to the surface to be worked.

Do not place needles/Chisel on the surface, and then pull the throttle lever as this will result in the tool bouncing off the surface.

Never allow the tool to run continuously whilst not in contact with the surface being prepared.

To switch off, simply release the throttle lever.

SUGGESTED LUBRICANTS

Oil the tool daily before use. Put a few drops of one of the following zinc free air tool lubricants through the air inlet:

SHELL S22 or R10, CASTROL Hyspin ZZ32

It is recommended that an inline lubricator be installed in the air hose adjacent to the tool.

Cleaning

If operation becomes unproductive and the piston shows signs of sticking, dismantle and clean with a highly refined paraffin.

Immediately after cleaning, thoroughly oil the tool with one of the recommended lubricants.

MACHINE STORAGE

Short period storage: up to 3 months

Clean outside of the equipment and inspect the consumable items for wear, replace any worn parts as required. Insert a liberal quantity of air tool through the air inlet and run briefly to ensure that the internal components are coated with oil. Cover and store the equipment in a dry location.

Long period storage: over 3 months

Follow instructions set out in 'short period storage'. Additionally lubricate any exposed moving parts with one of the suggested lubricants. Repeat this process every 3 months.

SERVICING & MAINTENANCE

SERVICING

Only a competent person, in a suitably equipped workshop, must carry out maintenance. Disconnect the tool from the air supply before carrying out any of the following operations.

For safe efficient running and at intervals of no more than 120 hours, dismantle and clean with highly refined paraffin.

DISMANTLING

After ensuring that the air supply is turned off, remove the tool from the airline. Thoroughly clean the outside of the tool prior to dismantling. Slacken the pinch bolt on the Needle Holder Assembly or Chisel Holder and carefully unscrew from the Body/Cylinder. Take care not to allow the internal components to fall out of the Needle Holder Assembly.

Valve Body Servicing

Clamp the Valve Body (1) firmly in a vice, using the flats provided, and with the Throttle Lever (1B) uppermost. Using a 3mm diameter pin or punch and small hammer, remove the Throttle Lever Roll Pin (1C), and remove the Throttle Lever (1B). Rotate the Valve Body (1) 180 degrees in the vice to gain access the Valve Cap (1E). Unscrew the Valve Cap (1E) using a screwdriver, check the Valve Cap O' Ring (1D) for signs of deterioration, remove the Spring (1F), push out the Valve Stem (1G) and remove the valve seat O' Ring (1H). Check the Valve Stem (1G) and O' Ring (1H) for wear.

Piston and Cylinder Removal (1B & 2B Tools)

Hold the Body (3) firmly in a vice, with the Valve Body (1) uppermost and using a suitable wrench and using the flats provided, unscrew the Valve Body (1). Remove the O'Ring from the Body (5) then remove the Piston (4). Inspect all components for signs of wear, particularly the small bore of the Body, replace components as necessary.

Piston and Cylinder Removal (2BPG & 3BPG Tools)

Hold the Cylinder (3) firmly in a vice, using the flats provided and with the Valve Assembly uppermost, unscrew the cover (10) from the cylinder (3). The Cylinder (3) has been secured with a retaining compound and may require a sharp blow on the handle using a rubber mallet to break this bond. Remove the two O'Ring seals (5) and (14) and the Piston (4). Inspect all components for signs of wear, particularly the small bore of the Cylinder, replace components as necessary.

ASSEMBLY

Before any assembly takes place, ensure all parts are clean and have a film of air tool oil lubrication unless otherwise stated. It is strongly recommended to change all o'rings and any other parts that show signs of wear using genuine Trelawny spares.

Valve Body Assembly

A Clamp the Valve Body firmly in a vice, using the flats provided, and with the threaded hole uppermost. Insert the valve seat O' Ring (1H) into Valve Body (1), followed by the Valve Stem (1G), Spring (1F), then the Valve Cap (1E) complete with its O' Ring (1D), tighten the Valve Cap (1) with a screwdriver. Rotate assembly 180 degrees in the vice. Using a 3mm diameter pin punch locate and align the Throttle Lever (1B) in position, then drive in the Throttle Lever Roll Pin (1C) into the pin location.

Piston and Cylinder Assembly (1B & 2B Tools)

Hold the Body (3) vertically in a vice. Insert the Piston (4), small diameter first into the bore. Fit a new O'Ring (5) onto the shoulder near the top of the body. Screw the Valve body by hand into the Body, and then tighten using a suitable spanner using the flats provided.

Piston and Cylinder Assembly (2BPG & 3BPG Tools)

Fit two new O'Rings (5) and (14) onto the Cylinder (3). Insert the Piston (4), small diameter first into the bore. With clean, dry and oil free threads apply a bead of Loctite 243 or similar adhesive to the central portion of the Cylinder (3) threads. Screw the Cylinder (3) fully into the Cover Assembly (13) by hand. Then holding the Cylinder in a vice using the flats provided, tighten fully by hand, then, using a rubber mallet, tap lightly on the handle until tightened fully.

Changing Needles

Loosen the Cap Head Screw on the Intermediate Tube (10) and remove the Tube Assembly, taking care not to allow the internal components to fall out. Remove the Needle Holder (7) and Anvil (9) as an assembly from the Intermediate Tube, check that the Return Spring (12) fitted inside the Intermediate Tube is in good condition. Remove the Needles from the Needle Holder and replace with new Needles. On assembly ensure that the small diameter of the Anvil (9) fits inside the Needle Holder (7). Place the Return Spring over the Needles and fit the assembly into the Intermediate Tube. Fully screw the Tube Assembly onto the Body/Cover. Position the boss underneath and tighten the Allen Screw. As the Needles wear, adjust the Front Tube by loosening the Allen Screw and adjusting the Front Tube so that approximately 1" (25mm) of Needle protrudes from the Front Tube (11) and then retighten the Allen Screw.

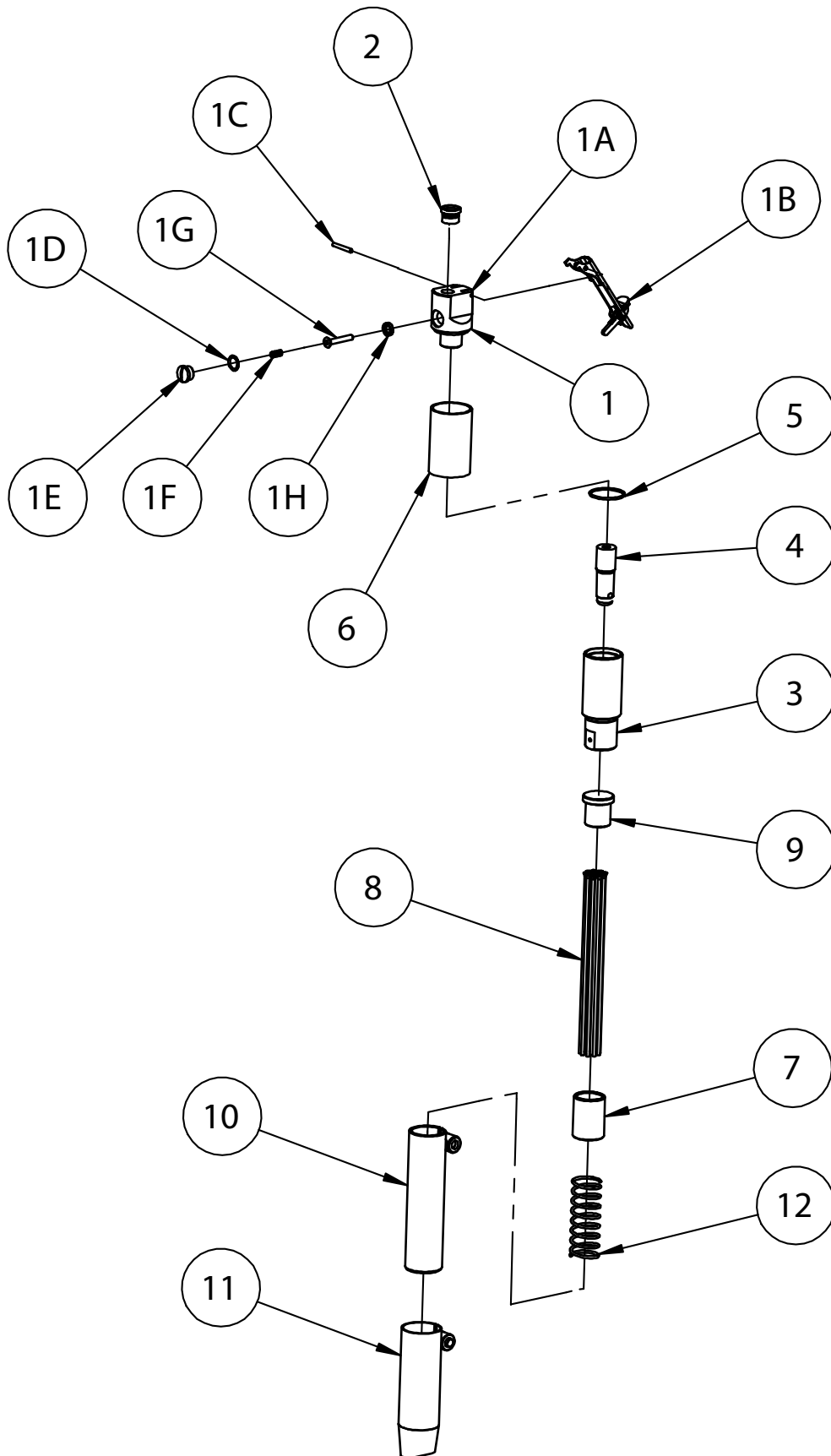
Fitting of Chisel Holder

Slacken the pinch bolt on the Needle Holder Assembly and remove the Assembly, taking care not to allow the internal components to fall out. To fit the Chisel Holder (15) ensure that the pinch bolt on the Chisel Holder (15) is loose, screw the Chisel Holder (15) fully on to the Cylinder (3). Then unscrew to position the boss underneath. Turn the knurled collar on the Chisel Holder (15) until the retaining ball is fully visible; insert the Chisel (16) aligning the rebate with the ball. Position the midpoint of the rebate on the shank of the Chisel (16) with the retaining ball and turn the collar half a turn to lock the Chisel (16) in place. Tighten the pinch bolt using a 6mm AF Allen key. To release the Chisel (16), rotate the knurled collar until the retaining ball is fully visible and remove the Chisel (16).

Fitting of the Needle Scaler Attachment

Slacken the pinch bolt on the Chisel Holder and remove Chisel Holder. Assemble the component parts of the Needle Scaler attachment in the following order; insert the Needles (8) into the Needle Holder (7), place the Spring (12) over the Needles, insert the Anvil (9), small diameter first, into the Needle Holder (7), place the assembly into the Intermediate Tube (10). Screw the assembly fully onto the Cylinder (3) and tighten the pinch bolt using a 6mm AF Allen key. Slide the Front Tube (11) on to the Intermediate Tube (10) until approximately 25mm (1") of Needle protrudes from the Front Tube (11). Tighten the pinch bolt using a 6mm AF Allen key.

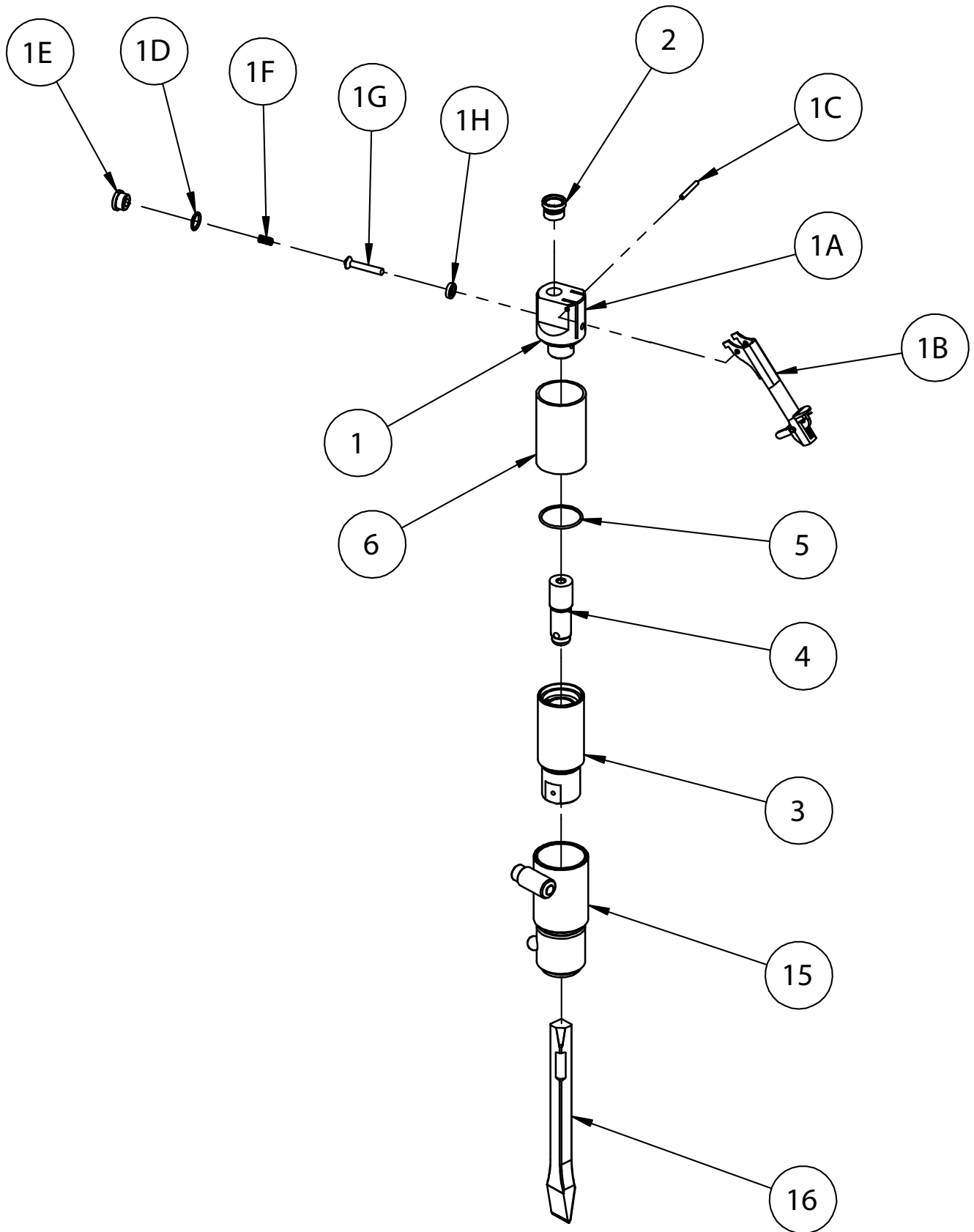
EXPLODED VIEW - 1B NEEDLE SCALER



PARTS LIST - 1B NEEDLE SCALER

ITEM NO.	PART NO.	DESCRIPTION	QUANTITY
1	423.1021	1B Valve Body Assembly - Safety Trigger	1
1A	616.3021	Valve Body	1
1B	716.1000	Safety Throttle Lever	1
1C	813.0108	Spring Pin 1/8" x 1" Long	1
1D	809.0139	Valve Cap O'Ring	1
1E	615.3021	Valve Cap	1
1F	712.3022	Valve Spring	1
1G	618.3022	Valve Stem	1
1H	809.0089	Valve Seat O'Ring	1
2	818.0250	Plug 1/4" BSP - Red	1
3	613.1001	Cylinder 1B	1
4	612.1001	Piston 1B	1
5	809.0249	O'Ring 28.3x1.78 1B/2BPG	1
6	721.1011	1B Plastic Sleeve - Red	1
7	601.1003	Needle Holder 3mm 1B	1
8	603.1107	Needle 3mm Flat	12
9	610.1001	Anvil 1B Scaler	1
10	416.1032	Tube Intermediate 1B	1
11	417.1032	Tube Straight Front 1B	1
12	712.1001	Spring Return 1B Scaler	1
ITEMS NOT SHOWN			
N/A	446.1010	1B Needle Scaler Service Kit Inc 1B,1C,1D,1F,1G,1H,4,5,7,9,12 & 12 x Flat Tip Needles	1
N/A	446.7110	1B Chisel Attachment Kit	1
N/A	819.2375	Connector 1/4 BSPT-3/8 Stem	1
N/A	458.1530	1/4" BSP Inline Oiler Assembly	1
N/A	453.1110	3mm Flat Needles x 100	1
N/A	453.2110	3mm Chisel Needles x 100	1
N/A	453.3110	3mm Pointed Needles x 100	1
N/A	453.1310	3mm Be/Cu Needles x 100	1

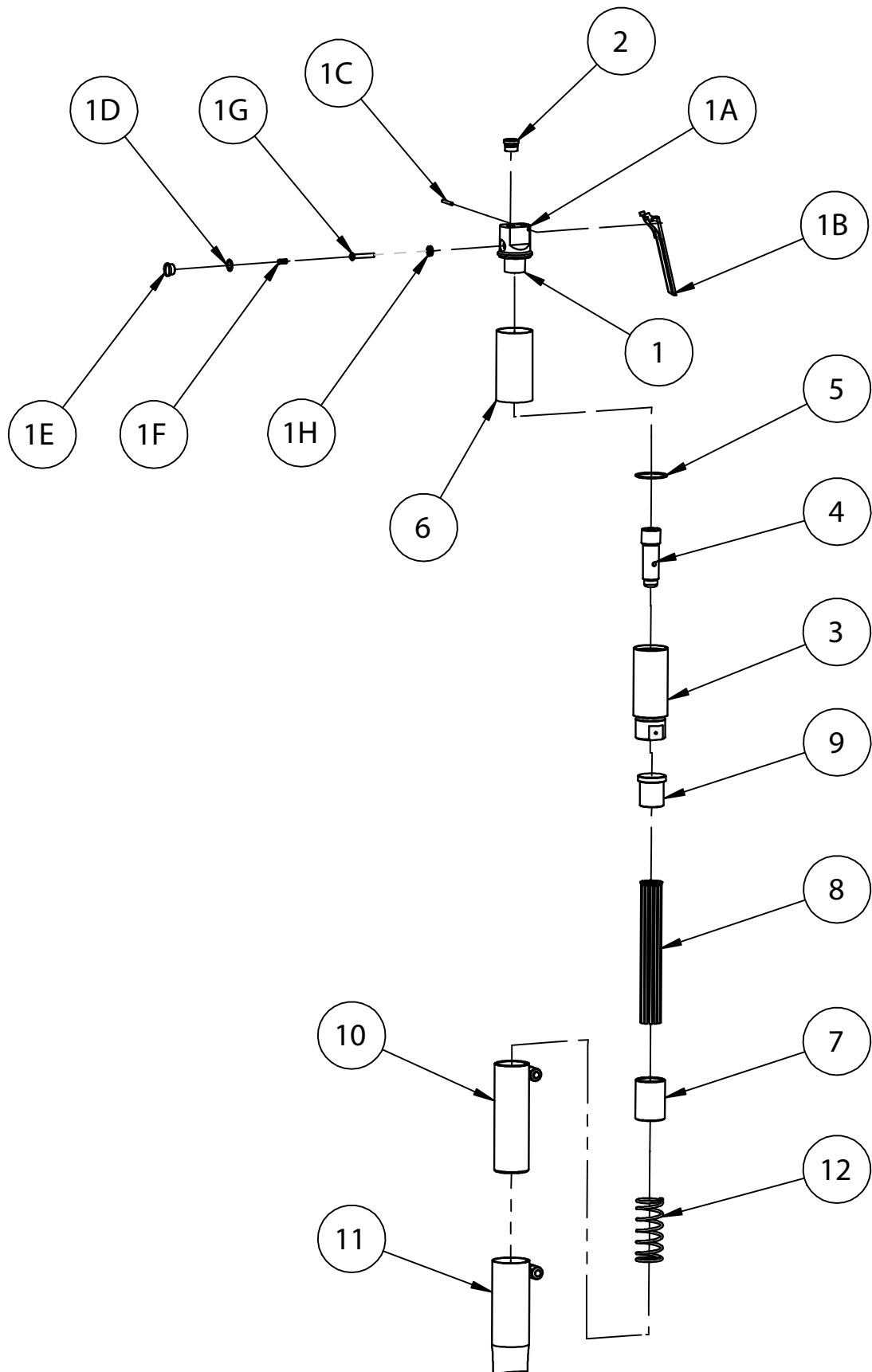
EXPLODED VIEW - 1B CHISEL SCALER



PARTS LIST - 1B CHISEL SCALER

ITEM NO.	PART NO.	DESCRIPTION	QUANTITY
1	423.1021	1B Valve Body Assembly - Safety Trigger	1
1A	616.3021	Valve Body	1
1B	716.1000	Safety Throttle Lever	1
1C	813.0108	Spring Pin 1/8" x 1" Long	1
1D	809.0139	Valve Cap O'Ring	1
1E	615.3021	Valve Cap	1
1F	712.3022	Valve Spring	1
1G	618.3022	Valve Stem	1
1H	809.0089	Valve Seat O'Ring	1
2	818.0250	Plug 1/4" BSP - Red	1
3	613.1001	Cylinder 1B	1
4	612.1001	Piston 1B	1
5	809.0249	O'Ring 28.3x1.78 1B/2BPG	1
6	721.1011	1B Plastic Sleeve - Red	1
15	419.1241	Chisel Holder 1/2 SQ -1B	1
16	704.2105	Chisel 1/2" sq cranked	1
ITEMS NOT SHOWN			
N/A	446.1012	1B Chisel Scaler Service Kit Inc: 1B,1C,1D,1F,1G,1H,4,5,16)	1
N/A	819.2375	Connector 1/4 BSPT-3/8 Stem	1
N/A	458.1530	1/4" BSP Inline Oiler Assembly	1
N/A	704.1101	Chisel 1/2" sq 7x3/4	1
N/A	704.1103	Chisel 1/2" sq. 7x2.1/2	1
N/A	704.1106	Chisel 1/2" sq. 8x1/4	1
N/A	704.1107	Chisel 1/2" sq. 10x3/4	1
N/A	704.1110	Chisel 1/2" sq.7x2 Alu.Br	1
N/A	704.1112	Chisel 1/2" SQ Moil Point	1
N/A	704.2105	Chisel 1/2" sq cranked	1

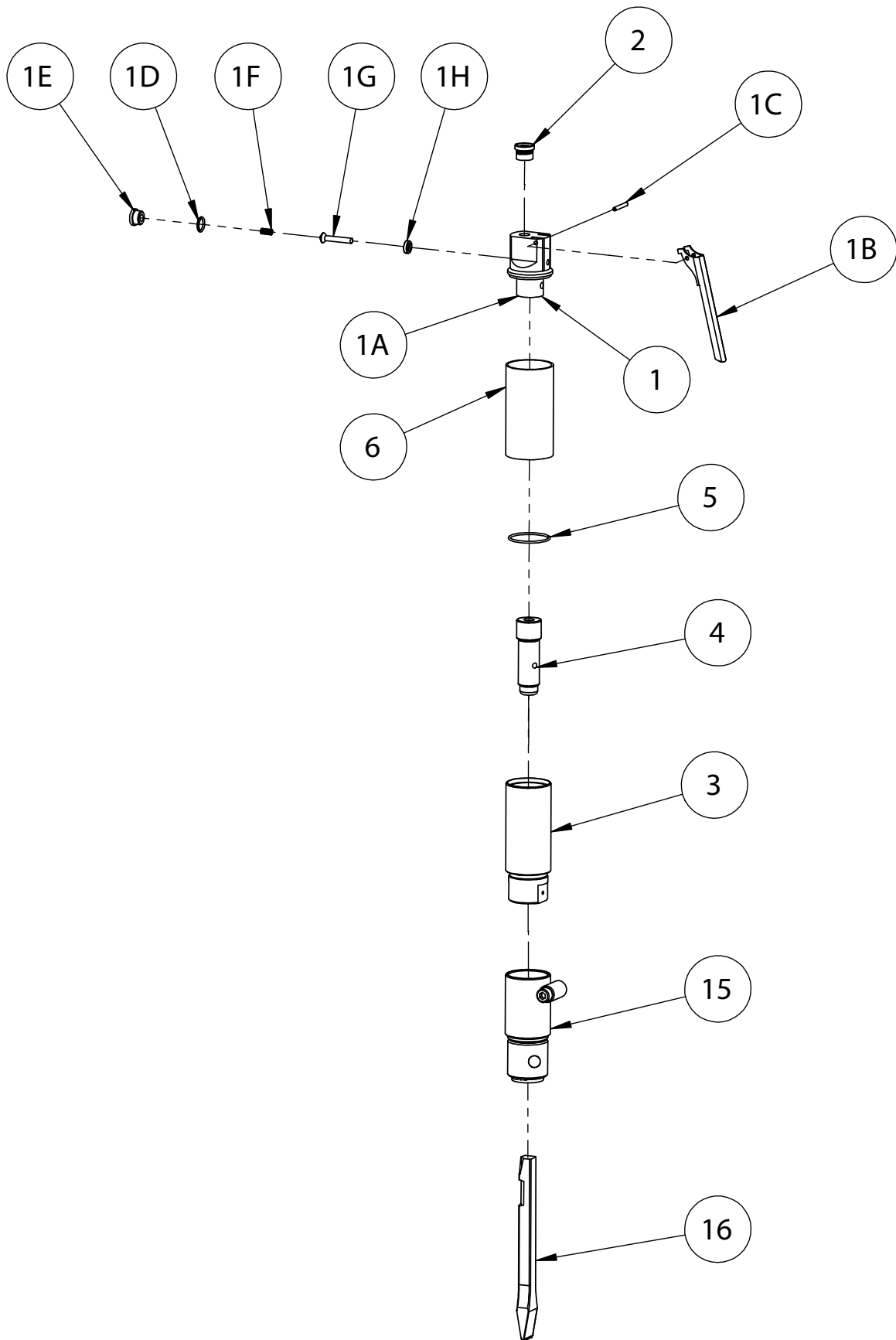
EXPLODED VIEW - 2B NEEDLE SCALER



PARTS LIST - 2B NEEDLE SCALER

ITEM NO.	PART NO.	DESCRIPTION	QUANTITY
1	423.2021	2B Valve Body Assembly	1
1A	616.3021	Valve Body	1
1B	716.3000	Throttle Lever	1
1C	813.0108	Spring Pin 1/8" x 1" Long	1
1D	809.0139	Valve Cap O'Ring	1
1E	615.3021	Valve Cap	1
1F	712.3022	Valve Spring	1
1G	618.3022	Valve Stem	1
1H	809.0089	Valve Seat O'Ring	1
2	818.0250	Plug 1/4" BSP - Red	1
3	613.2001	Cylinder 2B Scaler	1
4	612.2001	Piston 2B & 2BPG	1
5	809.5179	O'Ring 36.3x1.78 2B	1
6	721.2015	2B Plastic Sleeve - Red	1
7	601.2003	Needle Holder 3mm 2B	1
8	603.1107	Needle 3mm Flat	19
9	610.2001	Anvil 2B & 2BPG Scaler	1
10	416.2032	Tube Intermediate 2B	1
11	417.2032	Tube Straight Front 2B	1
12	712.2001	Spring Return 2B Scaler	1
ITEMS NOT SHOWN			
N/A	446.1020	2B Needle Scaler Service Kit Inc 1B,1C,1D,1F,1G,1H,4,5,7,9,12 & 19 x Flat Tip Needles	1
N/A	446.7120	2B/2BPG Chisel Attachment Kit	1
N/A	819.2375	Connector 1/4 BSPT-3/8 Stem	1
N/A	458.1530	1/4" BSP Inline Oiler Assembly	1
N/A	453.1110	3mm Flat Needles x 100	1
N/A	453.2110	3mm Chisel Needles x 100	1
N/A	453.3110	3mm Pointed Needles x 100	1
N/A	453.1310	3mm Be/Cu Needles x 100	1

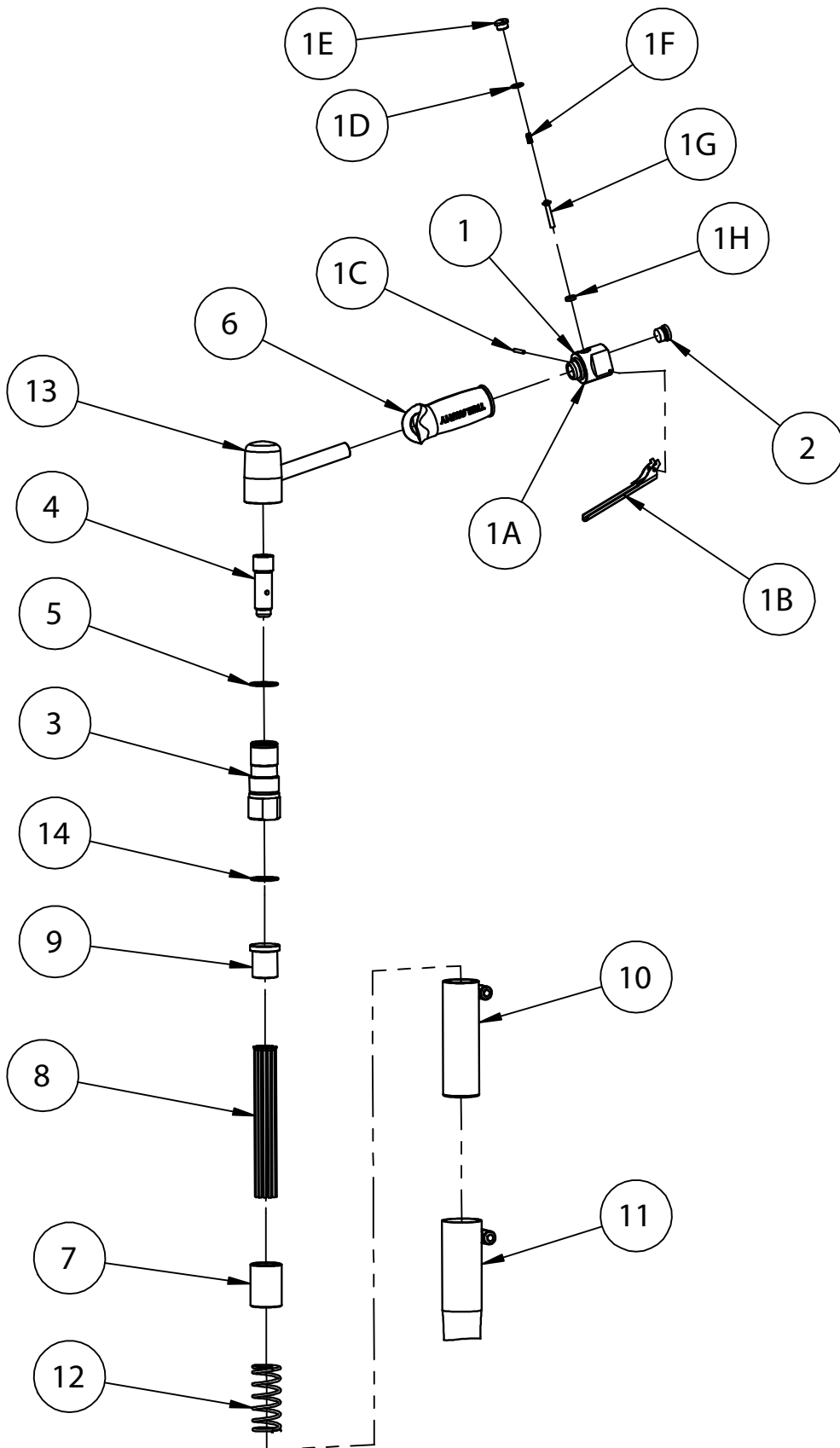
EXPLODED VIEW - 2B CHISEL SCALER



PARTS LIST - 2B CHISEL SCALER

ITEM NO.	PART NO.	DESCRIPTION	QUANTITY
1	423.2021	2B Valve Body Assembly	1
1A	616.3021	Valve Body	1
1B	716.3000	Throttle Lever	1
1C	813.0108	Spring Pin 1/8" x 1" Long	1
1D	809.0139	Valve Cap O'Ring	1
1E	615.3021	Valve Cap	1
1F	712.3022	Valve Spring	1
1G	618.3022	Valve Stem	1
1H	809.0089	Valve Seat O'Ring	1
2	818.0250	Plug 1/4" BSP - Red	1
3	613.2001	Cylinder 2B Scaler	1
4	612.2001	Piston 2B & 2BPG	1
5	809.5179	O'Ring 36.3x1.78 2B	1
6	721.2015	2B Plastic Sleeve - Red	1
15	419.2241	Chisel Holder 1/2 SQ -2B	1
16	704.1101	Chisel 1/2" sq 7x3/4	1
ITEMS NOT SHOWN			
N/A	446.1022	2B Chisel Scaler Service Kit Inc: 1B,1C,1D,1F,1G,1H,4,5,16)	1
N/A	819.2375	Connector 1/4 BSPT-3/8 Stem	1
N/A	458.1530	1/4" BSP Inline Oiler Assembly	1
N/A	704.1101	Chisel 1/2" sq 7x3/4	1
N/A	704.1103	Chisel 1/2" sq. 7x2.1/2	1
N/A	704.1106	Chisel 1/2" sq. 8x1/4	1
N/A	704.1107	Chisel 1/2" sq. 10x3/4	1
N/A	704.1110	Chisel 1/2" sq.7x2 Alu.Br	1
N/A	704.1112	Chisel 1/2" SQ Moil Point	1
N/A	704.2105	Chisel 1/2" sq cranked	1

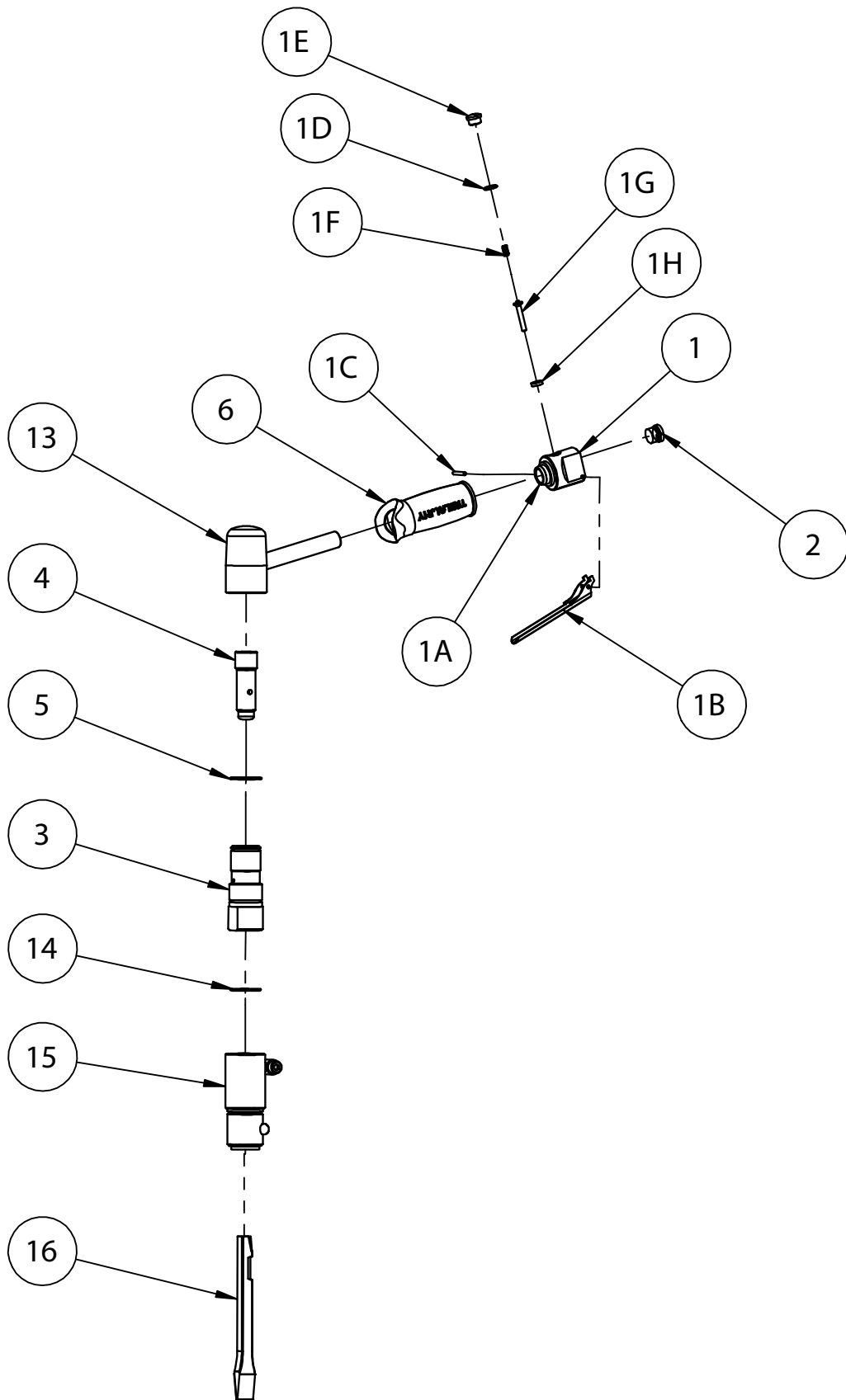
EXPLODED VIEW - 2BPG NEEDLE SCALER



PARTS LIST - 2BPG NEEDLE SCALER

ITEM NO.	PART NO.	DESCRIPTION	QUANTITY
1	423.3021	BPG/LR/PG Valve Body Assembly	1
1A	616.3021	Valve Body	1
1B	716.3000	Throttle Lever	1
1C	813.0108	Spring Pin 1/8" x 1" Long	1
1D	809.0139	Valve Cap O'Ring	1
1E	615.3021	Valve Cap	1
1F	712.3022	Valve Spring	1
1G	618.3022	Valve Stem	1
1H	809.0089	Valve Seat O'Ring	1
2	818.0250	Plug 1/4" BSP - Red	1
3	613.2101	Cylinder 2BPG	1
4	612.2001	Piston 2B & 2BPG	1
5	809.0249	O'Ring 28.3x1.78 1B/2BPG	1
6	717.3050	Grip - Trelawny Logo	1
7	601.2003	Needle Holder 3mm 2B	1
8	603.1107	Needle 3mm Flat	19
9	610.2001	Anvil 2B & 2BPG Scaler	1
10	416.2032	Tube Intermediate 2B	1
11	417.2032	Tube Straight Front 2B	1
12	712.2001	Spring Return 2B Scaler	1
13	425.2100	2BPG Cover Assembly - Red	1
14	809.0269	O'Ring 31.5x1.78 2BPG/3B	1
ITEMS NOT SHOWN			
N/A	446.1025	2BPG Needle Scaler Service Kit Inc 1B,1C,1D,1F,1G,1H,4,5,7,9,12,14 & 19 x Flat Tip Needles	1
N/A	446.7120	2B/2BPG Chisel Attachment Kit	1
N/A	819.2375	Connector 1/4 BSPT-3/8 Stem	1
N/A	458.1530	1/4" BSP Inline Oiler Assembly	1
N/A	453.1110	3mm Flat Needles x 100	1
N/A	453.2110	3mm Chisel Needles x 100	1
N/A	453.3110	3mm Pointed Needles x 100	1
N/A	453.1310	3mm Be/Cu Needles x 100	1

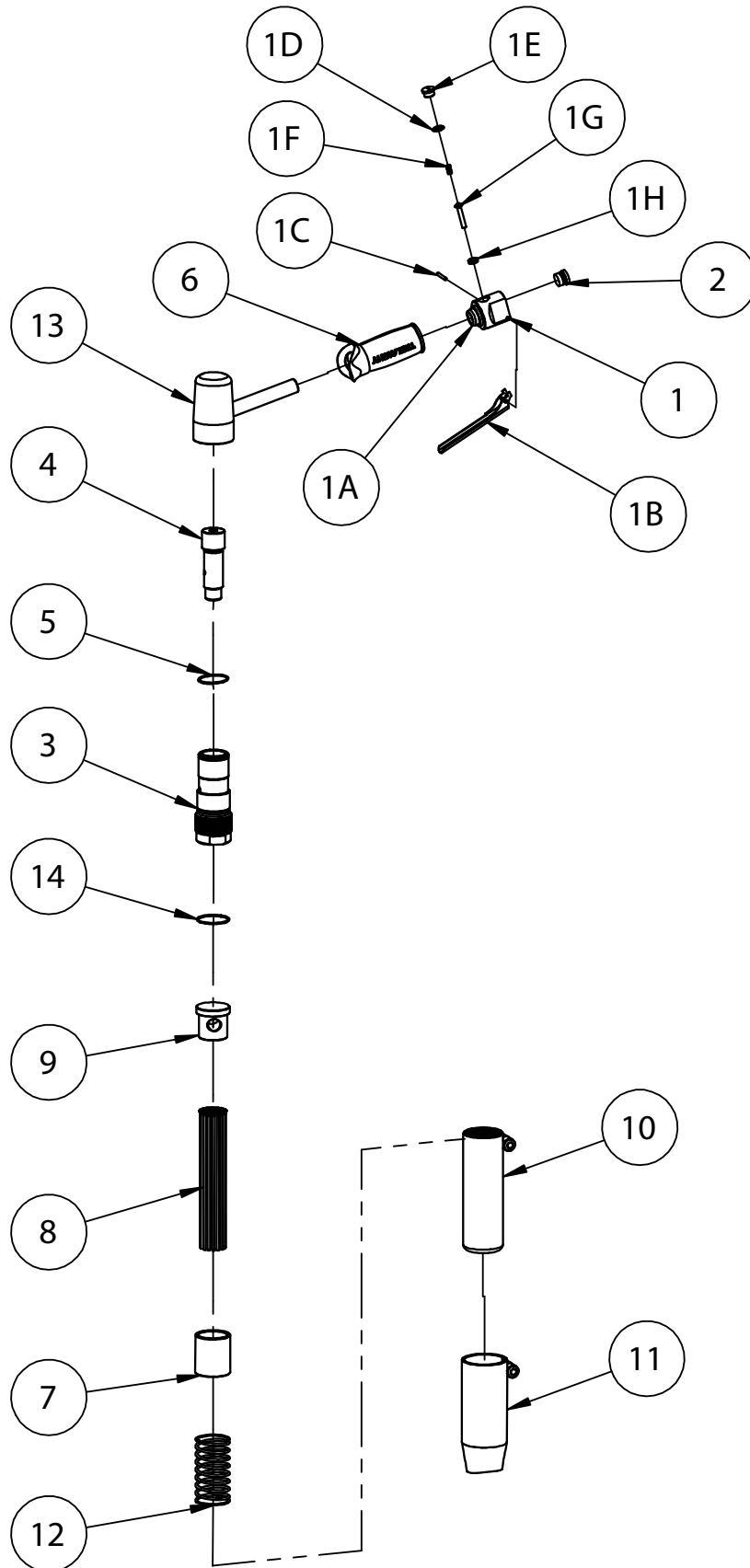
EXPLODED VIEW - 2BPG CHISEL SCALER



PARTS LIST - 2BPG CHISEL SCALER

ITEM NO.	PART NO.	DESCRIPTION	QUANTITY
1	423.3021	BPG/LR/PG Valve Body Assembly	1
1A	616.3021	Valve Body	1
1B	716.3000	Throttle Lever	1
1C	813.0108	Spring Pin 1/8" x 1" Long	1
1D	809.0139	Valve Cap O'Ring	1
1E	615.3021	Valve Cap	1
1F	712.3022	Valve Spring	1
1G	618.3022	Valve Stem	1
1H	809.0089	Valve Seat O'Ring	1
2	818.0250	Plug 1/4" BSP - Red	1
3	613.2101	Cylinder 2BPG	1
4	612.2001	Piston 2B & 2BPG	1
5	809.0249	O'Ring 28.3x1.78 1B/2BPG	1
6	717.3050	Grip - Trelawny Logo	1
13	425.2100	2BPG Cover Assembly - Red	1
14	809.0249	O'Ring 28.3x1.78 1B/2BPG	1
15	419.2241	Chisel Holder 1/2 SQ -2B	1
16	704.1101	Chisel 1/2" sq 7x3/4	1
ITEMS NOT SHOWN			
N/A	446.1027	2BPG Chisel Service Kit Inc: 1B,1C,1D,1F,1G,1H,4,5,16)	1
N/A	819.2375	Connector 1/4 BSPT-3/8 Stem	1
N/A	458.1530	1/4" BSP Inline Oiler Assembly	1
N/A	704.1101	Chisel 1/2" sq 7x3/4	1
N/A	704.1103	Chisel 1/2" sq. 7x2.1/2	1
N/A	704.1106	Chisel 1/2" sq. 8x1/4	1
N/A	704.1107	Chisel 1/2" sq. 10x3/4	1
N/A	704.1110	Chisel 1/2" sq.7x2 Alu.Br	1
N/A	704.1112	Chisel 1/2" SQ Moil Point	1
N/A	704.2105	Chisel 1/2" sq cranked	1

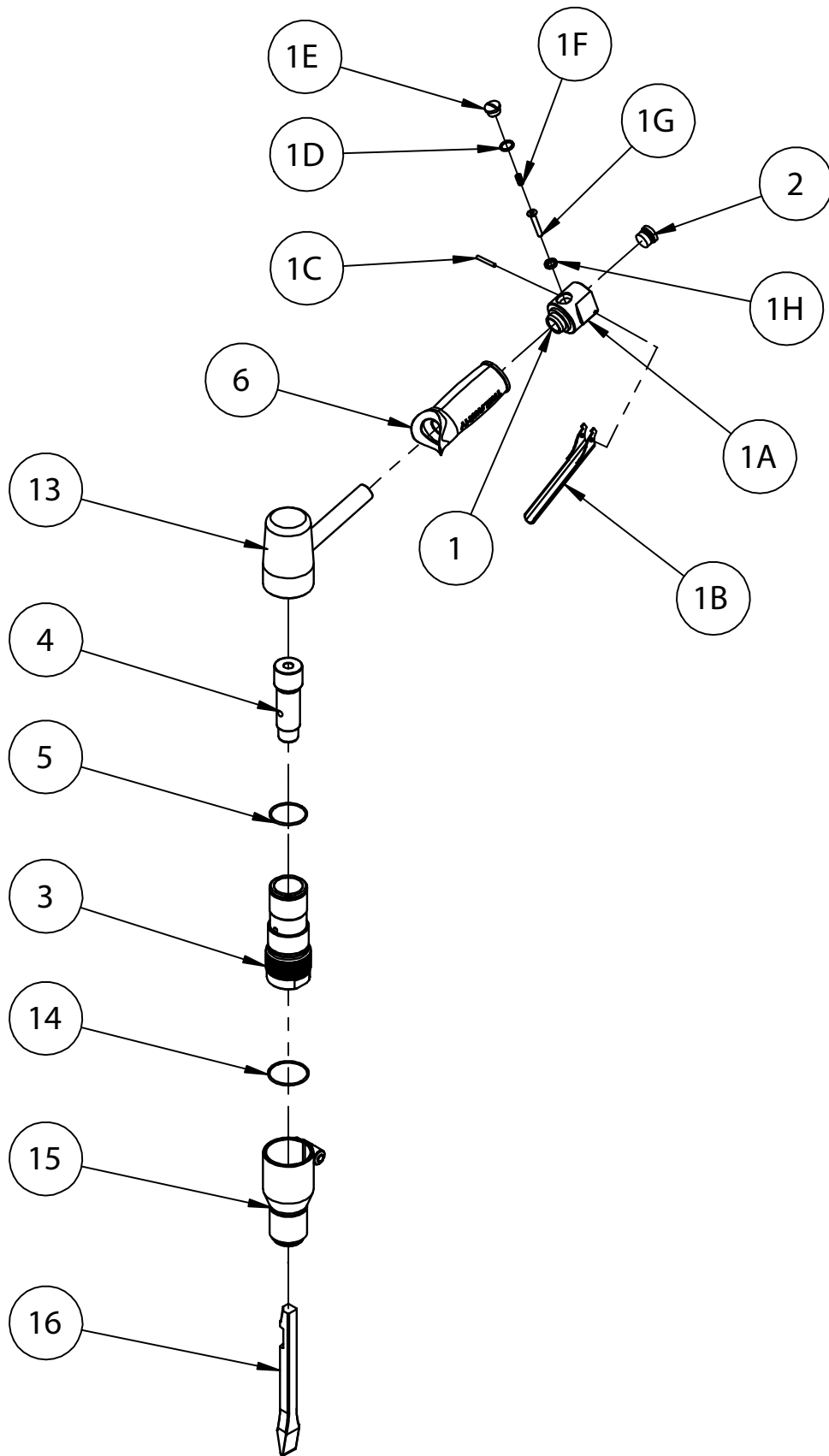
EXPLODED VIEW - 3BPG NEEDLE SCALER



PARTS LIST - 3BPG NEEDLE SCALER

ITEM NO.	PART NO.	DESCRIPTION	QUANTITY
1	423.3021	BPG/LR/PG Valve Body Assembly	1
1A	616.3021	Valve Body	1
1B	716.3000	Throttle Lever	1
1C	813.0108	Spring Pin 1/8" x 1" Long	1
1D	809.0139	Valve Cap O'Ring	1
1E	615.3021	Valve Cap	1
1F	712.3022	Valve Spring	1
1G	618.3022	Valve Stem	1
1H	809.0089	Valve Seat O'Ring	1
2	818.0250	Plug 1/4" BSP - Red	1
3	613.2101	Cylinder 2BPG	1
4	612.3001	Piston 3BPG/LR	1
5	809.0289	O'Ring	1
6	717.3050	Grip - Trelawny Logo	1
7	601.3003	Needle Holder 3mm 3BPG/LR	1
8	603.1107	Needle 3mm Flat	28
9	610.3001	Anvil 3BPG/LR	1
10	416.3132	Tube Intermediate 3BPG/LR	1
11	417.3032	Tube Straight Front 3BPG/LR	1
12	712.3001	Return Spring 3BPG/LR	1
13	425.3100	3BPG Cover Assembly - Red	1
14	809.0299	O'Ring	1
ITEMS NOT SHOWN			
N/A	446.1035	3BPG Needle Scaler Service Kit Inc 1B,1C,1D,1F,1G,1H,4,5,7,9,12,14 & 28 x Flat Tip Needles	1
N/A	446.7130	3BPG Chisel Attachment Kit	1
N/A	819.2375	Connector 1/4 BSPT-3/8 Stem	1
N/A	458.1530	1/4" BSP Inline Oiler Assembly	1
N/A	453.1110	3mm Flat Needles x 100	1
N/A	453.2110	3mm Chisel Needles x 100	1
N/A	453.3110	3mm Pointed Needles x 100	1
N/A	453.1310	3mm Be/Cu Needles x 100	1

EXPLODED VIEW - 3BPG CHISEL SCALER



PARTS LIST - 3BPG CHISEL SCALER

ITEM NO.	PART NO.	DESCRIPTION	QUANTITY
1	423.3021	BPG/LR/PG Valve Body Assembly	1
1A	616.3021	Valve Body	1
1B	716.3000	Throttle Lever	1
1C	813.0108	Spring Pin 1/8" x 1" Long	1
1D	809.0139	Valve Cap O'Ring	1
1E	615.3021	Valve Cap	1
1F	712.3022	Valve Spring	1
1G	618.3022	Valve Stem	1
1H	809.0089	Valve Seat O'Ring	1
2	818.0250	Plug 1/4" BSP - Red	1
3	613.3101	Cylinder 3BPG/LR	1
4	612.3001	Piston 3BPG/LR	1
5	809.0289	O'Ring	1
6	717.3050	Grip - Trelawny Logo	1
13	425.3100	3BPG Cover Assembly - Red	1
14	809.0299	O'Ring	1
15	419.3341	Chisel Holder 1/2" Sq. 8TPI	1
16	704.1101	Chisel 1/2" sq 7x3/4	1
ITEMS NOT SHOWN			
N/A	446.1037	3BPG Chisel Service Kit Inc: 1B,1C,1D,1F,1G,1H,4,5,16)	1
N/A	819.2375	Connector 1/4 BSPT-3/8 Stem	1
N/A	458.1530	1/4" BSP Inline Oiler Assembly	1
N/A	704.1101	Chisel 1/2" sq 7x3/4	1
N/A	704.1103	Chisel 1/2" sq. 7x2.1/2	1
N/A	704.1106	Chisel 1/2" sq. 8x1/4	1
N/A	704.1107	Chisel 1/2" sq. 10x3/4	1
N/A	704.1110	Chisel 1/2" sq.7x2 Alu.Br	1
N/A	704.1112	Chisel 1/2" SQ Moil Point	1
N/A	704.2105	Chisel 1/2" sq cranked	1

TECHNICAL SPECIFICATIONS

DETAIL	1B Needle	1B Chisel	2B Needle	2B Chisel	2BPG Needle	2BPG Chisel	3BPG Needle	3BPG Chisel
Part Code	111.1000	114.1200	121.2000	124.2200	123.2100	125.2300	133.3100	135.3300
Description	1B Needle Scaler	1B Chisel Scaler	2B Needle Scaler	2B Chisel Scaler	2BPG Needle Scaler	2BPG Chisel Scaler	3BPG Chisel Scaler	3BPG Chisel Scaler
Type	In-line	In-line	In-line	In-line	Pistol Grip	Pistol Grip	Pistol Grip	Pistol Grip
Piston Diameter	18.0mm	18.0mm	23.5mm	23.5mm	23.5mm	23.5mm	28.6mm	28.6mm
Piston Stroke	30.0mm	30.0mm	35.6mm	35.6mm	35.6mm	35.6mm	39.0mm	39.0mm
Blows Per Minute	3,800	3,800	3,000	3,000	3,000	3,000	2,200	2,200
Air Consumption	1.42lps (3.0 cfm)	1.42lps (3.0 cfm)	2.6lps (5.5 cfm)	2.6lps (5.5 cfm)	2.6lps (5.5 cfm)	2.6lps (5.5 cfm)	3.8lps (8.0 cfm)	3.8lps (8.0 cfm)
Air Pressure	6.2 bar (90 psi)	6.2 bar (90 psi)	6.2 bar (90 psi)	6.2 bar (90 psi)	6.2 bar (90 psi)	6.2 bar (90 psi)	6.2 bar (90 psi)	6.2 bar (90 psi)
Air Inlet	1/4" BSP	1/4" BSP	1/4" BSP	1/4" BSP	1/4" BSP	1/4" BSP	1/4" BSP	1/4" BSP
Overall Length	343mm	313mm	375mm	343mm	315mm	260mm	343mm	339mm
Weight	1.6kg	1.5kg	2.6kg	2.0kg	2.6kg	2.0kg	3.7kg	3.0kg
Needles / Chisel	29 x 2mm 12 x 3mm	19mm (3/4")	51 x 2mm 19 x 3mm	19mm (3/4")	51 x 2mm 19 x 3mm	19mm (3/4")	65 x 2mm 28 x 3mm	19mm (3/4")
Noise Level L _{PA} dB (A)	97.4	85.9	100.3	85.6	100.3	85.6	101.5	92.1
Noise Level L _{WA} dB (A)	110.4	98.9	113.3	98.6	113.3	98.6	114.5	105.1
Vibration Level AEQ H1* (K)**	11.4 (K=1.92m/s ²)	9.05 (K=2.25m/s ²)	13.14 (K=1.57m/s ²)	15.48 (K=2.53m/s ²)	15.24 (K=1.89m/s ²)	17.61 (K=2.84m/s ²)	19.59 (K=4.23m/s ²)	30.04 (K=4.34m/s ²)
Vibration Level AEQ H2* (K)**	12.37 (K=0.90m/s ²)	8.15 (K=0.70m/s ²)	15.31 (K=1.53m/s ²)	19.51 (K=1.08m/s ²)	18.57 (K=2.01m/s ²)	32.19 (K=5.70m/s ²)	42.57 (K=14.26m/s ²)	41.75 (K=3.47m/s ²)
H1* Indicates that the test was taken at the primary hand grip location, next to the throttle lever. H2* Indicates that the test was taken at the secondary hand grip position.								
Trelawny SPT Ltd operates a policy of continuous product development and refinement and therefore reserves the right to change technical specifications and product designs without giving prior notice.								

Noise Levels measured in accordance with:
BS EN ISO 15744:2008

Vibration levels measured in accordance with:
BS EN ISO 28927-9:2009 and BS EN ISO 20643:2008+A1:2012

(k) Equals the factor of uncertainty, which allows for variations in measurement and production. Vibration Data figures are tri-axial, which gives the total vibration emission. Because of various factors, the range of vibration emission during intended use can vary.

The vibration is dependent on the task, the operators grip, and feed force employed etc.

This equipment has been designed and produced in accordance with the following directive:
2006/42/EC Machinery Directive
and applicable harmonised standard; EN ISO 11148-4:2012

If your company has any problem with our products or would like to discuss the possibility of an improvement being made to them, then please do not hesitate to contact us. Your comments are both important and appreciated.

Trelawny tools are thoroughly tested under specified conditions in accordance with applicable internationally recognised standards. When a tool is used on site the conditions may not be the same as those used in our tests.

Trelawny Surface Preparation Technology operates a policy of continuous product development and refinement and therefore reserves the right to change technical specifications and product designs without giving prior notice.

All rights reserved. Any unauthorised use or copying of the contents or part thereof is prohibited. This applies to trademarks, model denominations, part numbers and drawings.

Use only genuine Trelawny consumables with this product. The use of non-Trelawny spare parts invalidates the warranty.

TROUBLE SHOOTING

FAULT	POSSIBLE CAUSE	ACTION
Poor performance or lack of power	Low air pressure.	Ensure that the air pressure is correct at 90psi, max 100psi.
	If tool has been left for some time without use, the oil may dry out slightly, causing a sticky residue.	Strip tool down, clean and re-oil.
	Needles worn or some missing.	Replace with new set of needles and new needle holder
	Can you feel side ways movement between the piston and cylinder bore?	Replace the piston and cylinder
	Incorrect chisel fitted.	Ensure that the chisel is for a B/BPG tool.
Tool continues to run with trigger released	Valve seal may have become dislodged through the tool being disconnected with the trigger in the open position.	Ensure that the trigger has not been taped or wired in the open position. Do not use quick release couplings to switch tool off.
High vibration	High air pressure.	Ensure that the air pressure is correct at 90psi, max 100psi.
	Lack of lubrication.	Lubricate with the recommended air tool oil daily.
	Low air pressure 70-80psi can also cause high vibration.	Ensure that the air pressure is correct at 90psi, max 100psi.
	Front return spring weak or broken.	Replace return spring.
If the problem has not been cured by any of the above actions, contact your local dealership or agent for assistance.		

NOTES

THE PERFECT FINISH
STARTS WITH
TRELAWNY



DEALER STAMP:



CONTACT US

Trelawny SPT Limited

Trelawny House, 13 Highdown Road, Sydenham Industrial Estate,
Leamington Spa, Warwickshire, CV31 1XT, United Kingdom

Telephone: +44 (0)1926 883781

Email: sales@trelawny.com

Website: www.trelawny.com

Manual Part Number:

735.3000 01

CERTIFIED
ISO 9001



0008