

SF1 & SF3 HAND SCALERS

OPERATION & MAINTENANCE MANUAL



CONTENTS

INTRODUCTION	3
GENERAL INFORMATION	3
EU DECLARATION OF CONFORMITY	4
UKCA DECLARATION OF CONFORMITY	5
DECLARATION OF CONFORMITY	6
SAFETY	7
HAND ARM VIBRATION	7
WARRANTY	7
PRE START CHECKS (DAILY)	8
OPERATION	8
SUGGESTED LUBRICANTS	8
MACHINE STORAGE	8
SERVICING & MAINTENANCE	9
EXPLODED VIEW - SF1	10
PARTS LIST - SF1	11
EXPLODED VIEW - SF1 VL	12
PARTS LIST - SF1 VL	13
EXPLODED VIEW - SF3	14
PARTS LIST - SF3	15
TECHNICAL SPECIFICATIONS	16
TROUBLE SHOOTING	17
NOTES	17
NOTES	18
NOTES	19
CONTACT US	20

INTRODUCTION

Thank you for choosing a product by Trelawny SPT Ltd, an innovative leading brand in the Surface Preparation sector.

This product has been manufactured under stringent quality standards to meet superior performance criteria. This manual contains the necessary maintenance information for you to ensure proper operation and care for this equipment.

In the unlikely event that you experience a problem please do not hesitate to contact your local Trelawny dealer or agent. We always welcome feedback and comments from our valued customers.



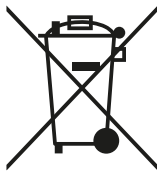
WARNING:

Carefully read through these original instructions before using your new TRELAWNY Equipment. Take special care to read warnings. TRELAWNY products have many features that will make your job faster and easier. Safety, performance, and dependability have been given top priority in the development of this product, making it easy to operate and maintain.



ENVIRONMENTAL PROTECTION:

The equipment, accessories and packaging should be sorted for environmentally friendly recycling. The plastic components are labelled for categorised recycling.



DISPOSAL:

Waste products should not be disposed of with household waste. Please recycle where facilities exist. Check with your local authority or retailer for recycling advice.

GENERAL INFORMATION

Before operating any TRELAWNY equipment, this manual must be read and understood by the operator, if in any doubt ask your supervisor before using this equipment. Failure to follow these instructions could result in damage to the equipment and/or personal injury.

Trelawny SPT Ltd disclaims all responsibility for damage to persons or objects arising as a consequence of incorrect handling of the equipment, failure to inspect the equipment

prior to starting work for damage or other faults that may influence the operation of safe working of the equipment, or failure to follow the safety regulations listed or applicable to the job site.

Operators should be familiar with the data given in the specification section. Please keep these instructions in a safe and accessible place.

EU DECLARATION OF CONFORMITY



EU Declaration of Conformity

We, **Trelawny SPT Ltd of 13 Highdown Road, Sydenham Industrial Estate, Leamington Spa, Warwickshire, CV31 1XT, GB** declare that the DoC is issued under our sole responsibility and belongs to the following product:

PART NUMBER

DESCRIPTION

SERIAL NUMBER

YEAR OF CONSTRUCTION

The object of the declaration described above is in conformity with the relevant **Union Harmonisation Legislation:**

- **2006/42/EC** Machinery Directive

The following harmonised standards and technical specifications have been applied:

- **EN ISO 11148-4:2012** Hand-held non-electric power tools — Safety requirements
Part 4: Non-rotary percussive power tools

Technical files are held by Indutrade Benelux BV, Anton Philipsweg 1, 1422 AL Uithoorn, Netherlands

Notified Body:
Not Applicable. Machinery is not listed under ANNEX IV of the Machinery Directive.

Place of Declaration:
Trelawny SPT Ltd, 13 Highdown Road, Sydenham Industrial Estate, Leamington Spa, Warwickshire, CV31 1XT, GB

Date of Declaration:
December 2024

Signed by:

Daniel Rowledge
Managing Director

UKCA DECLARATION OF CONFORMITY



UKCA Declaration of Conformity

We, **Trelawny SPT Ltd of 13 Highdown Road, Sydenham Industrial Estate, Leamington Spa, Warwickshire, CV31 1XT, GB** declare that the DoC is issued under our sole responsibility and belongs to the following product:

PART NUMBER.....

DESCRIPTION

SERIAL NUMBER

YEAR OF CONSTRUCTION

The object of the declaration described above is in conformity with the relevant **Statutory Requirements:**

- **2008 No. 1597** Supply of Machinery (Safety) Regulations 2008

The following designated standards and technical specifications have been applied:

- **BS EN ISO 11148-4:2012** Hand-held non-electric power tools — Safety requirements
Part 4: Non-rotary percussive power tools

Technical files are held by **Daniel Rowledge** at the Trelawny address stated above.

Approved Body:

Not Applicable. Machinery is not listed under ANNEX IV of the Machinery Directive.

Place of Declaration:

Trelawny SPT Ltd, 13 Highdown Road, Sydenham Industrial Estate, Leamington Spa, Warwickshire, CV31 1XT, GB

Date of Declaration:

December 2024

Signed by:

Daniel Rowledge
Managing Director

DECLARATION OF CONFORMITY

<p>CZ Prohlášení o přizpůsobení My, společnost Trelawny SPT Limited podávamej daňové přiznání, že výrobek a dodávka výrobku název výrobku Model, výrobní číslo Rok výroby Pro které se průkaz týkající, je přizpůsobení s zásobou od následující příkazov a jejich pohotovostní: 2006/42/EC Příkaz soustrojí 2014/35/EC Příkaz nízkého napětí (upotřebitelné jedině do výrobku použité elektrické energie)</p>	<p>LT ATITIKTIES DEKLARACIJA Mes, Trelawny SPT Limited Prisiidami visą atsakomybę deklaruojame, kad tiekiamas / gaminamas produktas Produkto pavadinimas Modelis, serijos numeris Pagaminimo Kuriam taikoma ši deklaracija, atitinka šių direktyvų, norminių aktų ir su jais susijusių, standartų reikalavimus: 2006/42/EC Įtaringos direktyva 2014/35/EC Žemos įtampos direktyva (taikoma tik elektriniams įrengimams)</p>
<p>DE Übereinstimmungserklärung Wir, Trelawny SPT Limited erklären, dass unter unserer alleinigen Verantwortung für die Lieferung und Herstellung des Produktes Name des Produktes Model, Seriennummer Jahr der Herstellung auf welches sich dieses Dokument bezieht, stimmt mit den Vorgaben der folgenden Direktive, normativen Dokumente und deren jeweiligen Masstabe ein: 2006/42/EC Maschineriedirektive 2014/35/EC Niederspannungsrichtlinie (nur zutreffend auf Produkte, die Strom benutzen)</p>	<p>MT DIKJARAZZJONI TA KONFORMITÀ Ahna, Trelawny SPT Limited Niddikjaraw li ahna responsabbli kompletament għal provista / manifattura tal-prodott hawn 1msemmi: Isem Il-Prodott Mudell, Serial number Sena li 'produzzjoni Dan id-dokument magħmul għal prodott imsemmi hawn fuq, li huwa skond il-provizjonijiet imsemmija fid-dokumenti tal-klassi tax-xogħol: 2006/42/EC Machinery Directive 2014/35/EC Low Voltage Directive (tapplika biss għal prodotti li jahdmu bi-elekttriku)</p>
<p>DK Erklæring om overensstemmelse Vi, Trelawny SPT Limited Erklærer hermed at under vores ene forhandling ansvar for vores forhandling/produktion af produktet Produkt navn Model, serie nummer Produktionsår For hvilket dette dokument referer, at deler i overensstemmelse med bestemmelser af følgende direktiver, normative dokumenter og deres relevante standard: 2006/42/EC Machinery directive 2014/35/EC Low voltage directive</p>	<p>NL EENVORMIGHEIDSVERKLARING Wij, Trelawny SPT Limited Verklaaren dat wij de volledige verantwoordelijkheid dragen voor het leveren/fabriceren van het volgende product: Naam van het product Type, Serienummer Productiejaar En verklaaren dat het product waarnaar dit document verwijst eenvoudig is met de voorzieningen van de volgende Richtlijn(en). Normatieve Documenten en hun relevante Standaarden: 2006/42/EC MACHINERIECHTLIJN 2014/35/EC LAAGSPANNINGSRICHTLIJN (uitsluitend van toepassing bij producten die elektrische stroom gebruiken)</p>
<p>EE TOOTE VASTAVUSE DEKLARATSIOON Meie, Trelawny SPT Limited Deklareerime, et vastutame järgmise varustuse/toote müügi eest Toote nimetus Mudel, Seeria number Aegsita loodangu Arvutud dokument lüendab toote vastavust järgmistele direktiivide/lele, normatiividele ja nendega samaväärsetele standardidele: 2006/42/EC MASINA DIREKTIIVID 2014/35/EC MADALPINGE DIREKTIIVID (Kohandatakse vaid tootele, mis kasutavad elektrivoolu)</p>	<p>PL Deklaracja Zgodności My, Firma Trelawny SPT Limited. oświadczamy w naszej odpowiedzialności, że produkcja i dostawa urzadzzenia Nazwa produktu Model, numer seryjny Rok produkcji do którego ten dokument należy, jest zgodne z klauzulami następujących zarządzeń i ich istotnych standardów: 2006/42/EC Zarządzenie mechaniczne 2014/35/EC Zarządzenie niskiego napięcia elektrycznego (Zastosowanie tylko przy urządzeniach elektrycznych)</p>
<p>ES Declaración de Conformidad Nosotros, Trelawny SPT Limited Declaramos que bajo nuestra completa responsabilidad de la fabricación/suministro del producto Nombre del Producto Modelo, No de Serie Año de producción A quien este documento se refiere, está de acuerdo con lo relacionado en la Directriz, Normativa Documentada y sus relevantes standards: 2006/42/EC Directorio de Maquinaria 2014/35/EC Directorio de Bajo Voltaje (Aplicable solamente a productos que funcionen con electricidad)</p>	<p>PT DECLARAÇÃO DE CONFORMIDADE CE A empresa TRELAWNY SPT LIMITED Declara, sob sua inteira responsabilidade, que o fornecimento/fabrico do seguinte produto: Designação do produto Modelo, Número de Série Ano de produção a que esta declaração se refere, está em conformidade com o preceituado nas Directivas e Normas Comunitárias abaixo indicadas: 2006/42/EC DIRECTIVA DE MÁQUINAS 2014/35/EC DIRECTIVA DE BAIXA VOLTAGEM (Aplicável apenas a produtos que utilizam energia eléctrica)</p>
<p>FI ILMOITUSVAHVISTUS Me, Trelawny SPT Limited Valmistamme tuotteen toimittamisesta/valmistamisesta Tuotteen nimi Malli, sarjanumero Valmistusvuosi Täällä todistuksella vahvistamme säädökset seuravien ohje/ohjesien, Yleisin papereihin ja niihin liittyvät vaatimukset: 2006/42/EC KONEISTON OHJEET 2014/35/EC PIENJÄNNITTE OHJEET (tarvitaan ainoastaan tuotelle jotka käyttävät sähkövoimaa)</p>	<p>RU СВИДЕТЕЛЬСТВО О СООТВЕТСТВИИ Мы, Trelawny SPT Limited Заявляем, что несем полную ответственность за поставку/производство нижеуказанной продукцией наименование изделия Модель, серийный номер Год выпуска на которую выдано настоящее Свидетельство, и которая соответствует положениям следующей(их) директив(ы), нормативным документам и относящимся к ним стандартам: 2006/42/EC ДИРЕКТИВА ПО МЕХАНИЗМАМ 2014/35/EC ДИРЕКТИВА ПО НИЗКОВОЛЬТНОМУ ОБОРУДОВАНИЮ (распространяется только на изделия с электропитанием)</p>
<p>FR DÉCLARATION DE CONFORMITÉ Nous, soussignés Trelawny SPT Limited déclarons que le produit sous-nommé Nom du produit Modèle et Numéro de Série Année de production et pour lequel nous prenons entière responsabilité pour sa fourniture et manufacture, est conforme aux clauses des directives suivantes documents normatifs et normes qui s'y appliquent: 2006/42/EC DIRECTIVE POUR LA MACHINERIE 2014/35/EC DIRECTIVE POUR BAS VOLTAGE (n'est applicable qu'aux produits utilisant l'énergie électrique)</p>	<p>SE FÖRSÄKRAN OM ÖVERENSSTÄMMELSE VI, TRELAWNY SPT LIMITED FÖRKLARAR ATT VI MED ENSAMT ANSVAR ANSKAFFAT / TILLVERKAT PRODUKTEN PRODUKTNAMN MODELL och SERIE NUMMER Tillverkningsår TILL VILKEN DETTA DOKUMENT HÄNVISAR ÄR I ÖVERENSSTÄMMELSE MED FÖLJANDE DIREKTIV, NORMATIVA DOKUMENT OCH DERAS RELEVANTA STANDARDER 2006/42/EC MASKINDIREKTIV 2014/35/EC LÅGSTRÖMSDIREKTIV (TILLÄMPLIG PÅ ELEKTRISK DRIVNA PRODUKTER)</p>
<p>GR ΔΗΛΩΣΗ ΠΙΣΤΟΤΗΤΑΣ Η εταιρεία Trelawny Spt Limited Δηλώνει ότι έχει τη μοναδική ευθύνη ως κατασκευαστρια / προμηθευτρια του παρακάτω προϊόντος περιγραφής προϊόντος μοντέλο, αριθμός σειράς έτος παραγωγής και στο οποίο αναφέρεται αυτή η δήλωση, είναι συμβατό με τις προδιαγραφές που ορίζονται στις ακόλουθες Κοινοτικές Οδηγίες Ελεγκτικές Διατάξεις κι άλλες σχετικές προδιαγραφές 2006/42/EC ΟΔΗΓΙΑ ΠΕΡΙ ΜΗΧΑΝΗΜΑΤΩΝ 2014/35/EC ΟΔΗΓΙΑ ΠΕΡΙ ΧΑΜΗΛΗΣ ΤΑΣΗΣ (αφορά μόνον προϊόντα που λειτουργούν με ηλεκτρικό ρεύμα)</p>	<p>SI IZJAVA O SKLADNOSTI Trelawny SPT Limited pod polno odgovornostjo izjavljamo, da so spodaj navedeni proizvodi, ki jih dobavljamo/produčujemo: Ime proizvoda Model, serijska številka Leto proizvodnje na katere se ta dokument nanaša, proizvedeni v skladu z določili naslednjih direktiv, normativnih dokumentov in njihovih relevant- nih standardov: 2006/42/EC DIREKTIVA O STROJIH 2014/35/EC DIREKTIVA O STROJIH Z NIZKO VOLTAŽO (nanaša se samo na proizvode na električni pogon)</p>
<p>HU MEGFELELŐSÉGI NYILATKOZAT Mi, A "Trelawny SPT Limited" cég Felelősségünk tudatában kijelentjük, hogy mint a termék szállítója/gyártója Termék neve Típus, Sorozatszám Gyártási év amelyre jelen dokumentum vonatkozik, megfelel az alábbi Irányelv(ek), Irányadó Dokumentumok előírásainak, és az azokat meghatározó szabványoknak: 2006/42/EC GÉPÉSZETI IRÁNYELVEK 2014/35/EC KISFESZÜLTÉSŰ IRÁNYELVEK (Csak az elektromos meghajtású gépeknél)</p>	<p>TR UYGUNLUK BEYANI Trelawny SPT Limited Aşağıdaki, üretim ve tedarikinden tek başına sorumlu olduđu ürünün Ürün adı Model/Seri no Üretim yılı bu belgenin ilgili olduđu apaşğıdaki yönetmeliklerin, norm belgelerinin ve ilgili standartları'nın koşullarına uygun olduđunu beyan eder: 2006/42/EC MAKÝNALAR YÖNETMELÝĐÝ 2014/35/EC DÜĐUK GERÝLÝM YÖNETMELÝĐÝ (Yalnızca elektrikle çalıřan ürünlerde geçerlidir)</p>
<p>IT DICHIARAZIONE DI CONFORMITÀ La Società Trelawny SPT Limited Dichiaro, sotto la propria responsabilità, che la fornitura / produzione del prodotto Nome prodotto Modello, codice Anno di produzione a cui si riferisce tale documento è conforme alle seguenti Direttive, ai documenti della Normativa ed ai relativi standard: 2006/42/EC DIRETTIVA SULLE APPARECCHIATURE 2014/35/EC DIRETTIVA SUL BASSO VOLTAGGIO (applicabile esclusivamente per i prodotti che utilizzano energia elettrica)</p>	

SAFETY

DO:

- Wear personal protective equipment including safety goggles, footwear, ear defenders and gloves. In some environments it will be necessary to wear facemasks or breathing apparatus.
- Be aware that this equipment can create dust and flying debris.
- Keep hands, feet and clothing away from moving parts.
- Follow the prestart checks detailed in this manual.
- Ensure that the workplace is well ventilated.
- Be aware of others working around you.
- Always follow safe-working practices.
- Inspect the equipment prior to using.
- Store this equipment in a secure and dry environment.

DO NOT:

- Modify this equipment in any way. This will invalidate the warranty and could lead to serious injury.
- Allow the equipment to run unattended.
- Use petrol (gasoline), thinners or any other high flash point solvent to clean the equipment.
- Disassemble or repair unless Trelawny trained.
- Permanently fix the operating lever or button in the on/run position.

HAND ARM VIBRATION

Trelawny Equipment may cause hand-arm Vibration Syndrome injury if their use is not adequately managed.

We advise you to carry out a risk assessment and to implement measures such as; limiting exposure time [i.e. actual trigger time, not total time at work], job rotation, ensuring the tools are used correctly, ensuring the tools are maintained according to our recommendations, and ensuring that the operators wear personal protective equipment (PPE) particularly gloves and clothing to keep them warm and dry.

Employers should consider setting up a programme of health surveillance to establish a benchmark for each operator and to detect early symptoms of vibration injury.

We are not aware of any PPE that provides protection against vibration injury by attenuating vibration emissions.

See 'Specifications' section for vibration emission data.

Further advice is available from our Technical Department.

We strongly advise you to visit the Health & Safety Executive website <http://www.hse.gov.uk/vibration> - this site provides excellent advice and information on HAV and currently, includes a Hand-Arm Vibration Exposure Calculator that is easy to use to work out the daily vibration exposure for each of your operators.

WARRANTY

When you choose TRELAWNY, you're investing in a product engineered for strength, durability, and unwavering reliability. Our equipment is built to endure the toughest challenges, showcasing nearly 80 years of craftsmanship in Surface Preparation Technology. We take pride in being the industry benchmark, offering not just a tool but a lasting companion for tough jobs, backed by a 12-month warranty for peace of mind.

Register your TRELAWNY product within 30 days of purchase by scanning the QR code to activate your warranty and enjoy the full support from our team.

PLEASE RETAIN YOUR PROOF OF PURCHASE, AS IT WILL BE REQUIRED TO PROCESS ANY WARRANTY CLAIMS.

The following are not covered under the Trelawny warranty:

- Damage caused by abuse, misuse, dropping or other similar damage caused by or as a result of failure to follow assembly, operation or user maintenance instructions.
- Alterations, additions or repairs carried out by persons other than Trelawny or their recognised agents.

- Transportation costs to and from Trelawny or their recognised agents, for repair or assessment against a warranty claim, on any equipment.
- Materials and/or labour costs to renew, repair or replace components due to fair wear and tear.

In no case whatsoever shall the Customer be entitled to claim damages, in particular but not be limited, loss of profit and other direct or indirect or consequential damage. This exclusion of liability, however, does not apply to unlawful intent or gross negligence on our part, but does apply to unlawful intent or gross negligence of persons employed or appointed by us to perform any of his obligations.



All warranty claims should firstly be directed to Trelawny SPT Ltd. Please provide, part number, serial number and proof of purchase, either by telephone or E-mail.

Tel: +44 (0)1926 883781

Email : warranty@trelawny.com

PRE START CHECKS (DAILY)

- The compressed air must be free from water and dirt. Always clear the air hose before connecting to the tool.
- Ensure that no moisture (condensation) is present in the air hose.
- Ensure air hose and all couplings are secure, leak free and in good condition.
- Limit the length of air hose to 30M. Where extra length is necessary, for each additional 15M of air hose used, the pressure drop is approximately 0.21bar (3psi).
- For safe and efficient operation, the correct operating pressure is 6.2bar (90 psi).
- Do not let the operating pressure fall below 5.5bar (80psi) or rise above 6.9bar (100 psi).
- In particularly cold weather it is recommended that a proprietary anti-freeze lubricating oil is used.

OPERATION

Prior to operating the tool check:

That all parts of the tool are fully screwed/fitted together and secure, if you are in any doubt ask your supervisor before using this equipment.

That the air pressure is correct for this tool 6.2 bar (90 p.s.i.).

That a liberal amount of lubricant has been put into the air inlet of the tool. (See suggested lubricants)

To operate the tool, which is dependant on the type of lever fitted, for those fitted with a safety lever, first push thumb button forwards and then for both styles of lever, pull the lever towards the handle grip to start the tool, then apply the cutter heads to the surface being prepared.

Care must be taken to avoid damaging or tripping over the air hose. Maintain contact with the work surface with sufficient pressure only to keep the tool from bouncing off. Excessive pressure can prevent the tool from working to its full capacity. Handled correctly the Scaler will work quickly and efficiently.

Excessive operator pressure will not improve the tool efficiency but will cause premature tool failure and operator fatigue.

Never allow the tool to run continuously whilst not in contact with the surface being prepared.

Please be aware: that this tool will reduce in power or stop working if the end cap has become unscrewed.

To switch off, simply release the throttle lever.

SUGGESTED LUBRICANTS

Oil the tool daily before use. Put a few drops of one of the following zinc free air tool lubricants through the air inlet:

SHELL S22 or R10, CASTROL Hyspin ZZ32

It is recommended that an inline lubricator be installed in the air hose adjacent to the tool.

Cleaning

If operation becomes unproductive and the piston shows signs of sticking, dismantle and clean with a highly refined paraffin.

Immediately after cleaning, thoroughly oil the tool with one of the recommended lubricants.

MACHINE STORAGE

Short period storage: up to 3 months

Clean outside of the equipment and inspect the consumable items for wear, replace any worn parts as required. Insert a liberal quantity of air tool through the air inlet and run briefly to ensure that the internal components are coated with oil. Cover and store the equipment in a dry location.

Long period storage: over 3 months

Follow instructions set out in 'short period storage'. Additionally lubricate any exposed moving parts with one of the suggested lubricants. Repeat this process every 3 months.

SERVICING & MAINTENANCE

SERVICING

Only a competent person, in a suitably equipped workshop, must carry out maintenance. Disconnect the tool from the air supply before carrying out any of the following operations.

DISMANTLING

After ensuring that the air supply is turned off, remove the tool from the airline. Thoroughly clean the outside of the tool prior to dismantling.

Cutter Head removal

Lay the scaling hammer on a solid surface with the cutter head facing uppermost. Place the head removal washer between the cutter head and the body; insert the removal pin, into cutter head hole. Wearing safety glasses and using a medium size hammer give a sharp blow to the head of the pin, which will release the cutter head from the piston. Inspect all components for wear, replace as necessary

Valve Body servicing

Clamp the handle assembly firmly in a soft face jawed vice (valve body end) with the throttle lever uppermost. Using a 3mm diameter pin punch, remove the throttle lever roll pin, and then remove the throttle lever. Rotate the tool 180 degrees in the vice to access the valve. Unscrew the valve cap using a screwdriver, check the valve cap O'Ring, remove the spring, push out the valve stem and remove the O'Ring. Check the valve and O'Ring for wear.

ASSEMBLY

Before any assembly takes place, ensure all parts are clean and have a film of air tool oil lubrication unless otherwise stated. Avoid lubricating oil or grease contaminating the threads of the end cap, the threads within the bore of the bodies and the tapers on piston and cutter heads. The end caps will require securing with a thread-locking adhesive. It is good practice to renew all O'Rings and the brush seals. Replace any parts showing signs of wear; pay particular attention to the small bore of the cylinder.

Cutter Head Assembly

Remove all traces of oil and dirt etc, from the taper diameter on the piston and cutter head by cleaning with suitable oil free solvent. Fit the piston into the cylinder as shown in the service layout. Place the assembly onto a solid surface; fit a new brush-seal over the piston and into the recess of the cylinder. Select one of the cleaned new cutter head and place on to the taper of the piston. Using a soft-faced hammer deliver a sharp blow to the cutter head.

Note: If you are re-fitting a used cutter head to the piston it is essential that the internal diameter of the cutter head is re-surfaced using a medium grade of emery cloth - this will ensure a good fit between cutter head and piston.

Do not use adhesive of any description on the taper.

If the taper has expanded to much on the old cutter heads, they may not stay on the piston, replacements will be required.

Valve Body Assembly

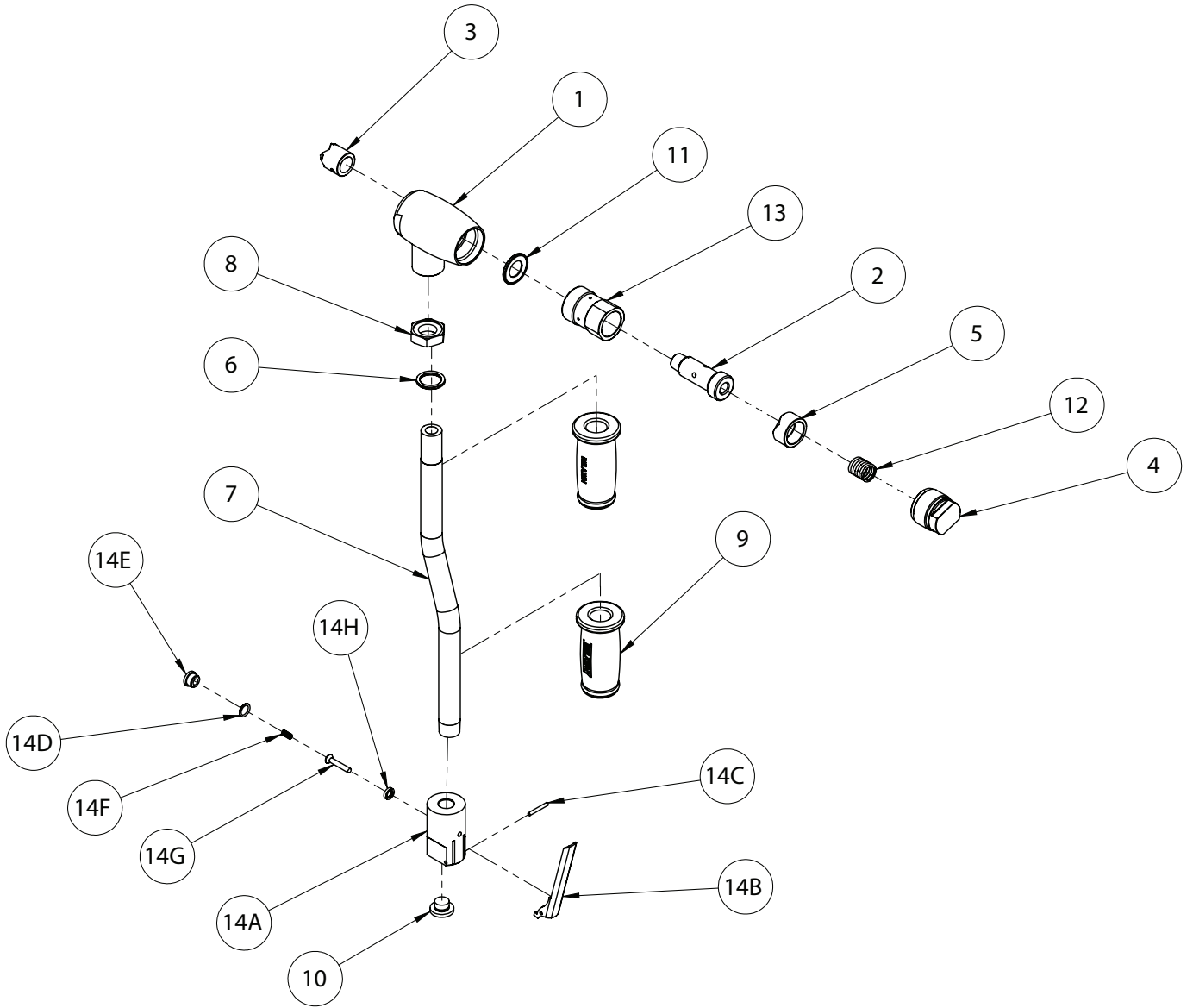
Clamp the handle assembly firmly in a soft faced vice (valve body end), insert new valve stem O'Ring into valve body, followed by the valve stem, spring, then the valve cap complete with its O'Ring, tighten the valve cap with a screwdriver.

Rotate assembly 180 degrees in vice. Using a 3mm diameter pin punch locate and align the throttle lever in position, then drive in the throttle lever roll pin into the pin location.

Final Assembly

Assemble the end cap, fit spring into the end cap and fit spring cap into the end cap as shown in the service layout. Insert piston into the body and apply a few drops of air tool lubricant to the top of the piston(s). Hold the handle in a soft faced vice ensuring the screw cap threads are uppermost. Remove all traces of oil from the screwed cap threads and threads of the body. Apply Loctite 243 sealant to the first 3 threads of the end cap. Screw end cap assembly into the body until finger tight and using a suitable spanner torque down to 55N.m. (40 lbs.ft).

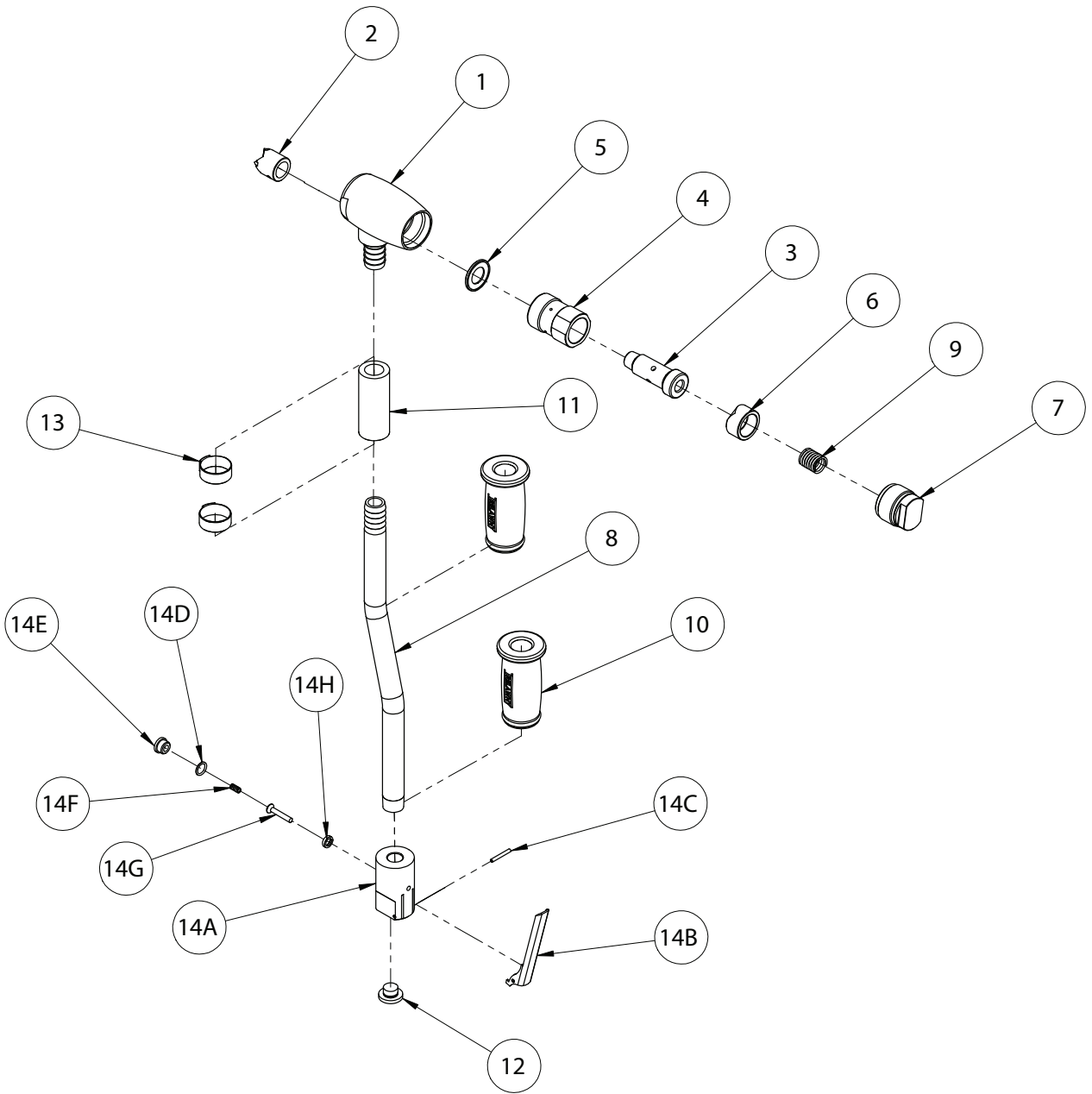
EXPLODED VIEW - SF1



PARTS LIST - SF1

ITEM NO.	PART NO.	DESCRIPTION	QUANTITY
1	411.5101	Single Scaler Body	1
2	612.5301	Piston	1
3	426.5351	Cruciform Cutter Head	1
4	615.5341	Screw Cap	1
5	615.5361	Spring Cap	1
6	810.9001	Sealing Washer	1
7	624.5301	Handle	1
8	625.5301	Locknut	1
9	717.3060	Grip	2
10	818.0375	3/8" BSP Plug	1
11	614.5301	Brush Seal	1
12	712.5301	Spring	1
13	613.5301	Cylinder	1
14A	423.5321	Valve Body Assembly (Includes 14A-14H)	1
14B	716.3000	Throttle lever	1
14C	813.0108	Spring Pin	1
14D	809.0139	O' Ring	1
14E	615.3021	Valve Cap	1
14F	712.3022	Valve Spring	1
14G	618.3022	Valve Stem	1
14H	809.0089	O' Ring	1
ITEMS NOT SHOWN			
N/A	446.1520	SF1 Service Kit - Cruciform head Inc: 2,3,4,5,11,12,14B,14C,14D,14F,14G,14H, Extractor Plate & Pin	1
N/A	633.5301	Scaler Head Extractor Plate	1
N/A	827.0428	Extractor Pin	1
N/A	426.5352	Bush Hammer Head	1
N/A	606.5303	Beryllium Copper Head	1
N/A	859.1555	1/2" Inline Oiler	1
N/A	815.5550	Safety Whip Check	1
N/A	458.1555	Whip Hose & Oiler Assembly	1

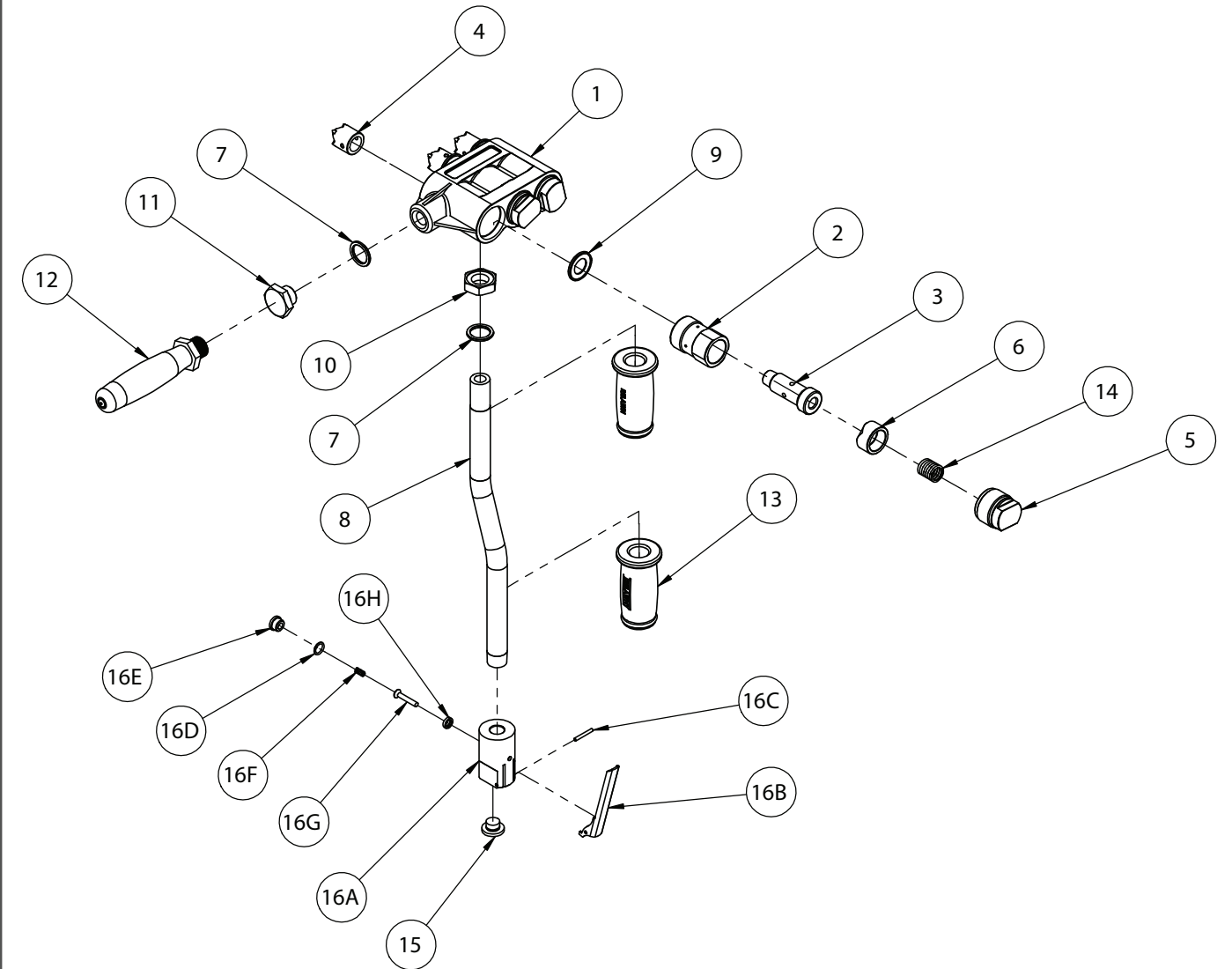
EXPLODED VIEW - SF1 VL



PARTS LIST - SF1 VL

ITEM NO.	PART NO.	DESCRIPTION	QUANTITY
1	411.5121	Single Scaler Body - Low Vib	1
2	426.5351	Cruciform Cutter Head	1
3	612.5301	Piston	1
4	613.5301	Cylinder	1
5	614.5301	Brush Seal	1
6	615.5361	Spring Cap	1
7	615.5341	Screw Cap	1
8	624.5350	Handle - Low Vib	1
9	712.5301	Spring	1
10	717.3060	Grip	2
11	719.1380	Flexible Connector	1
12	818.0375	3/8" BSP Plug	1
13	821.2000	Hose Clamp	2
14A	423.5321	Valve Body Assembly (Includes 14A-14H)	1
14B	716.3000	Throttle lever	1
14C	813.0108	Spring Pin	1
14D	809.0139	O' Ring	1
14E	615.3021	Valve Cap	1
14F	712.3022	Valve Spring	1
14G	618.3022	Valve Stem	1
14H	809.0089	O' Ring	1
ITEMS NOT SHOWN			
N/A	446.1520	SF1 Service Kit - Cruciform head Inc: 2,3,5,6,7,9,14B,14C,14D,14F,14G,14H, Extractor Plate & Pin	1
N/A	633.5301	Scaler Head Extractor Plate	1
N/A	827.0428	Extractor Pin	1
N/A	426.5352	Bush Hammer Head	1
N/A	606.5303	Beryllium Copper Head	1
N/A	859.1555	1/2" Inline Oiler	1
N/A	815.5550	Safety Whip Check	1
N/A	458.1555	Whip Hose & Oiler Assembly	1

EXPLODED VIEW - SF3



PARTS LIST - SF3

ITEM NO.	PART NO.	DESCRIPTION	QUANTITY
1	611.5301	Triple Scaler Body	1
2	613.5301	Cylinder	3
3	612.5301	Piston	3
4	426.5351	Cruciform Cutter Head	3
5	615.5341	Screw Cap	3
6	615.5361	Spring Cap	3
7	810.9001	Sealing Washer	2
8	624.5301	Handle	1
9	614.5301	Brush Seal	3
10	625.5301	Locknut	1
11	634.5301	Blanking Plug	1
12	422.5315	Side Handle	1
13	717.3060	Grip	2
14	712.5301	Spring	3
15	818.0375	3/8" BSP Plug	1
16A	423.5321	Valve Body Assembly (Includes 16A-16H)	1
16B	716.3000	Throttle lever	1
16C	813.0108	Spring Pin	1
16D	809.0139	O' Ring	1
16E	615.3021	Valve Cap	1
16F	712.3022	Valve Spring	1
16G	618.3022	Valve Stem	1
16H	809.0089	O' Ring	1
ITEMS NOT SHOWN			
N/A	446.1530	SF3 Service Kit - Cruciform heads Inc: 3,4,5,6,9,14,16B,16C,16D,16F,16G,16H, Extractor Plate & Pin	1
N/A	633.5301	Scaler Head Extractor Plate	1
N/A	827.0428	Extractor Pin	1
N/A	426.5352	Bush Hammer Head	1
N/A	606.5303	Beryllium Copper Head	1
N/A	859.1555	1/2" Inline Oiler	1
N/A	815.5550	Safety Whip Check	1
N/A	458.1555	Whip Hose & Oiler Assembly	1

TECHNICAL SPECIFICATIONS

DETAIL	SF1	SF1 VL	SF3
Part Code	151.5100 151.5105	196.5095 196.5090	153.5300 153.5305
Description	SF1 Single Scaler	SF1 VL Single Scaler	SF3 Triple Scaler
Piston Diameter	27mm	27mm	27mm
Piston Length	68.6mm	68.6mm	68.6mm
Piston Stroke	26mm	26mm	26mm
Blows Per Minute	3,000	3,000	3 x 3,000
Air Consumption	3.3l/s (7.0 cfm)	3.3l/s (7.0 cfm)	5.2l/s (11.0 cfm)
Air Pressure	6.2 bar (90 psi)	6.2 bar (90 psi)	6.2 bar (90 psi)
Air Inlet *	3/8" NPT	3/8" NPT	3/8" NPT
Length	465mm	515mm	450mm
Width	55mm	55mm	155mm
Height	90mm	90mm	115mm
Weight	2.5kg	2.5kg	3.7kg
Noise Level L _{PA} dB (A)	88.1	92.5	92.7
Noise Level L _{WA} dB (A)	101.1	106.3	105.7
Vibration Level m/s Primary	6.8 (k)	3.7 (k)	13.4 (k)
Vibration Level m/s Secondary	31.4 (k)	9.9 (k)	12.0 (k)
Trelawny SPT Ltd operates a policy of continuous product development and refinement and therefore reserves the right to change technical specifications and product designs without giving prior notice.			
* 3/8" NPT x 1/2" BSP Adaptor included			

Noise Levels measured in accordance with:
BS EN ISO 15744:2008

Vibration levels measured in accordance with:
BS EN ISO 28927-9:2009 and BS EN ISO 20643:2008+A1:2012

(k) Equals the factor of uncertainty, which allows for variations in measurement and production. Vibration Data figures are tri-axial, which gives the total vibration emission. Because of various factors, the range of vibration emission during intended use can vary.

The vibration is dependent on the task, the operators grip, and feed force employed etc.

This equipment has been designed and produced in accordance with the following directive:
2006/42/EC Machinery Directive
and applicable harmonised standard; EN ISO 11148-4:2012

If your company has any problem with our products or would like to discuss the possibility of an improvement being made to them, then please do not hesitate to contact us. Your comments are both important and appreciated.

Trelawny tools are thoroughly tested under specified conditions in accordance with applicable internationally recognised standards. When a tool is used on site the conditions may not be the same as those used in our tests.

Trelawny Surface Preparation Technology operates a policy of continuous product development and refinement and therefore reserves the right to change technical specifications and product designs without giving prior notice.

All rights reserved. Any unauthorised use or copying of the contents or part thereof is prohibited. This applies to trademarks, model denominations, part numbers and drawings.

Use only genuine Trelawny consumables with this product. The use of non-Trelawny spare parts invalidates the warranty.

THE PERFECT FINISH
STARTS WITH
TRELAWNY



DEALER STAMP:



CONTACT US

Trelawny SPT Limited

Trelawny House, 13 Highdown Road, Sydenham Industrial Estate,
Leamington Spa, Warwickshire, CV31 1XT, United Kingdom

Telephone: +44 (0)1926 883781

Email: sales@trelawny.com

Website: www.trelawny.com

Manual Part Number:

735.5300 01

CERTIFIED
ISO 9001

