

A45 Industrial Dust Collector (Bin)

Operation and Maintenance Manual





EU Declaration of Conformity

We, **Trelawny SPT Ltd of 13 Highdown Road, Sydenham Industrial Estate, Leamington Spa, Warwickshire, CV31 1XT, GB** declare that the DoC is issued under our sole responsibility and belongs to the following product:

PART NUMBER.....

DESCRIPTION

SERIAL NUMBER

YEAR OF CONSTRUCTION

The object of the declaration described above is in conformity with the relevant **Union Harmonisation Legislation**:

- **2006/42/EC** Machinery Directive
- **2014/30/EU** EMC Directive
- **2014/35/EU** Low Voltage Directive
- **2011/65/EU** Restriction of Hazardous Substances Directive

The following harmonised standards and technical specifications have been applied:

- **EN ISO 12100:2010** Safety of machinery
- **EN 60204-1:2018** Safety of machinery. Electrical equipment of machines - General requirements
- **EN ISO 4871:2009** Acoustics. Declaration and verification of noise emission values of machinery and equipment

Technical files are held by Indutrade Benelux BV, Anton Philipsweg 1, 1422 AL Uithoorn, Netherlands

Notified Body:

Not Applicable. Machinery is not listed under ANNEX IV of the Machinery Directive.

Place of Declaration:

Trelawny SPT Ltd, 13 Highdown Road, Sydenham Industrial Estate, Leamington Spa, Warwickshire, CV31 1XT, GB

Date of Declaration:

December 2024

Signed by:

Daniel Rowledge
Managing Director



UKCA Declaration of Conformity

We, **Trelawny SPT Ltd of 13 Highdown Road, Sydenham Industrial Estate, Leamington Spa, Warwickshire, CV31 1XT, GB** declare that the DoC is issued under our sole responsibility and belongs to the following product:

PART NUMBER.....

DESCRIPTION

SERIAL NUMBER

YEAR OF CONSTRUCTION

The object of the declaration described above is in conformity with the relevant **Statutory Requirements:**

- **2008 No. 1597** Supply of Machinery (Safety) Regulations 2008
- **2016 No. 1091** Electromagnetic Compatibility Regulations 2016
- **2016 No. 1101** The Electrical Equipment (Safety) Regulations 2016
- **2012 No. 3032** The Restriction of the Use of Certain Hazardous Substances in Electrical and Electronic Equipment Regulations 2012

The following designated standards and technical specifications have been applied:

- **BS EN ISO 12100:2010** Safety of machinery
- **BS EN 60204-1:2018** Safety of machinery. Electrical equipment of machines - General requirements
- **BS EN ISO 4871:2009** Acoustics. Declaration and verification of noise emission values of machinery and equipment

Technical files are held by **Daniel Rowledge** at the Trelawny address stated above.

Approved Body:

Not Applicable. Machinery is not listed under ANNEX IV of the Supply of Machinery (Safety) Regulations 2008

Place of Declaration:

Trelawny SPT Ltd, 13 Highdown Road, Sydenham Industrial Estate, Leamington Spa, Warwickshire, CV31 1XT, GB

Date of Declaration:

December 2024

Signed by:

Daniel Rowledge
Managing Director

CZ	<p>Prohlášení o přizpůsobení My, společnost Trelawny SPT Limited podávamey daňové přiznání, že výrobek a dodávka výrobku název výrobku Model, výrobní číslo Rok výroby Pro které se průkaz týká, je přizpůsobení s zásoby od následující příkazov a jejich pohotovosti: 98/37/EC Příkaz soustrojí 73/23/EC Příkaz nízkého napětí (upotřebitelne jediné do výrobku použití elektrické energie)</p>	LT	<p>ATITIKTIES DEKLARACIJA Mes, Trelawny SPT Limited Prisiimdami visa atsakomybę, deklaruoame, kad tiekiamas / gaminamas produktas Produkto pavadinimas Modelis, serijos numeris Pagaminimo Kuriam taikoma ši deklaracija, atitinka šių direktyvų, norminių aktų ir su jais susijusių standartų reikalavimus: 98/37/EC Įrangos direktyva 73/23/EC Žemos įtampos direktyva (taikoma tik elektriniams įrengimams)</p>
DE	<p>Übereinstimmungserklärung Wir, Trelawny SPT Limited erklären, dass unter unserer alleinigen Verantwortung für die Lieferung und Herstellung des Produktes Name des Produktes Model, Seriennummer Jahr der Herstellung auf welches sich dieses Dokument bezieht, stimmt mit den Vorgaben der folgenden Direktive, normativen Dokumente und deren jeweiligen Masstabe ein: 98/37/EC Maschineriedirektive 73/23/EC Niederspannungsdirektive (nur zutreffend auf Produkte, die Strom benutzen)</p>	MT	<p>DIKJARAZZJONI TA KONFORMITA Ahna, Trelawny SPT Limited Niddikjaraw li ahna responsabli kompletament ghal provista / maniffattura tal-prodott hawn imsemmi : Isem il-Prodott Mudell, Serial number Sena ta 'produzzjoni Dan id-dokument maghmul ghal prodott imsemmi hawn fuq, li huwa skond il-provizjonijiet imsemmija fid-dokumenti tal-klassi tax-xoghol : 98/37/EC Machinery Directive 73/23/EC Low Voltage Directive (tapplika biss ghal prodotti li jahdmu bl-eletriku)</p>
DK	<p>Erklæring om overensstemmelse Vi, Trelawny SPT Limited Erklærer hermed at under vores ene forhandling ansvar for vores forhandling/produktion af produktet Produkt navn Model, serie nummer Produktionsår For hvilket dette dokument referer, at det er i overensstemmelse med bestemmelser af følgende direktiver, normative dokumenter og deres relevante standart: 98/37/EC Machinery directive 73/23/EC Low voltage directive</p>	NL	<p>EENVORMIGHEIDSVERKLARING Wij, Trelawny SPT Limited Verklaeren dat wij de volledige verantwoordelijkheid dragen voor het leveren/fabriceren van het volgende product: Naam van het product Type, Serienummer Productiejaar En verklaren dat het product waarnaar dit document verwijst eenvormig is met de voorzieningen van de volgende Richtlijn(en), Normatieve Documenten en hun relevante Standaarden: 98/37/CE MACHINERICHTLIJN 73/23/CE LAAGSPANNINGSRICHTLIJN (uitsluitend van toepassing bij producten die elektrische stroom gebruiken)</p>
EE	<p>TOOTE VASTAVUSE DEKLARATSIOON Meie, Trelawny SPT Limited Deklareerime, et vastutame järgmise varustuse/toote müügi eest Toote nimetus Mudel, Seeria number Aasta toodangu Antud dokument tõendab toote vastavust järgmistele direktiivide(de)le, normatiivaktidele ja nendega samaväärsetele standarditele: 98/37/EC MASINA DIREKTIIVID 73/23/EC MADALPINGE DIREKTIIVID (Kohandatakse vaid toodetele, mis kasutavad elektrivoolu)</p>	PL	<p>Deklaracja Zgodności My, Firma Trelawny SPT Limited, oświadczamy w naszej odpowiedzialności, że produkcja i dostawa urządzenia Nazwa produktu Model, numer seryjny Rok produkcji Rok produkcji do którego ten dokument należy, jest zgodne z klauzulami następujących zarządzeń i ich istotnych standardów: 98/37/EC Zarządzenie mechaniczne 73/23/EC Zarządzenie niskiego napięcia elektrycznego (Zastosowanie tylko przy urządzeniach elektrycznych)</p>
ES	<p>Declaración de Conformidad Nosotros, Trelawny SPT Limited Declaramos que bajo nuestra completa responsabilidad de la fabricación/suministro del producto Nombre del Producto Modelo, No de Serie Año de producción A quién este documento se refiere, está de acuerdo con lo relacionado en la Directriz, Normativa Documentada y sus relevantes standards: 98/37/EC Directorio de Maquinaria 73/23/EC Directorio de Bajo Voltaje (Aplicable solamente a productos que funcionan con electricidad)</p>	PT	<p>DECLARAÇÃO DE CONFORMIDADE CE A empresa TRELAWNY SPT LIMITED Declara, sob sua inteira responsabilidade, que o fornecimento/fabrico do seguinte produto: Designação do produto Modelo, Número de Série Ano de produção a que esta declaração se refere, está em conformidade com o preceituado nas Directivas e Normas Comunitárias abaixo indicadas: 98/37/EC DIRECTIVA DE MÁQUINAS 73/23/EC DIRECTIVA DE BAIXA VOLTAGEM (Aplicável apenas a produtos que utilizam energia eléctrica)</p>
FI	<p>ILMOITUSVAHVISTUS Me, Trelawny SPT Limited Vahvistamme tuotteiden toimittamisesta/valmistamisesta Tuotenimi Malli, sarjanumero Valmistusvuosi Tällä todistuksella vahvistamme säädökset seuraviin ohje/ohjesiin, Yleisiin papereihin ja niihin liittyvät vaatimukset: 98/37/EC KONEISTON OHJEET 73/23/EC PIENJÄNNITTE OHJEET (tarvitaan ainoastaan tuotteille jotka käyttävät sähkövoimaa)</p>	RU	<p>СВИДЕТЕЛЬСТВО О СООТВЕТСТВИИ Мы, Trelawny SPT Limited Заявляем, что несем полную ответственность за поставку/производство нижеуказанной продукции Наименование изделия Модель, серийный номер Год выпуска на которую выдано настоящее Свидетельство, и которая соответствует положениям следующей(их) Директив(ы), нормативным документам и относящимся к ним стандартам: 98/37/EC ДИРЕКТИВА ПО МЕХАНИЗМАМ 73/23/EC ДИРЕКТИВА ПО НИЗКОВОЛЬТНОМУ ОБОРУДОВАНИЮ (распространяется только на изделия с электропитанием)</p>
FR	<p>DÉCLARATION DE CONFORMITÉ Nous, soussignés Trelawny SPT Limited déclarons que le produit sous-nommé Nom du produit Modèle et Numéro de Série Année de production et pour lequel nous prenons entière responsabilité pour sa fourniture et manufacture, est conforme aux clauses des directives suivantes, documents normatifs et normes qui s'y appliquent: 98/37/EC DIRECTIVE POUR LA MACHINERIE 73/23/EC DIRECTIVE POUR BAS VOLTAGE (n'est applicable qu'aux produits utilisant l'énergie électrique)</p>	SE	<p>FÖRSÄKRAN OM ÖVERENSSTÄMMELSE VI, TRELAWNY SPT LIMITED FÖRKLARAR ATT VI MED ENSAMT ANSVAR ANSKAFFAT / TILLVERKAT PRODUKTEN PRODUKTNAMN MODELL och SERIE NUMMER Tillverkningsår TILL VILKEN DETTA DOKUMENT HÄNVISAR, ÄR I ÖVERENSSTÄMMELSE MED FÖLJANDE DIREKTIV, NORMATIVA DOKUMENT OCH DERAS RELEVANTA STANDARDER 98/37/EC MASKINDIREKTIV 73/23/EC LÅGSTRÖMSDIREKTIV (TILLÄMPLIG PÅ ELEKTRISK DRIVNA PRODUKTER)</p>
GR	<p>ΔΗΛΩΣΗ ΠΙΣΤΟΤΗΤΑΣ Η εταιρεία Trelawny SPT Limited Δηλώνει ότι έχει τη μοναδική ευθύνη ως κατασκευαστρια / προμηθευτρια του παρακατω προϊόντος περιγραφη προϊόντος μοντελο, αριθμος σειρας έτος παραγωγής και στο οποίο αναφέρεται αυτή η δήλωση, είναι συμβατο με τις προδιαγραφές που ορίζονται στις ακόλουθες Κοινοτικές Οδηγίες Ελεγκτικές Διατάξεις κι άλλες σχετικές προδιαγραφές 98/37/EC ΟΔΗΓΙΑ ΠΕΡΙ ΜΗΧΑΝΗΜΑΤΩΝ 73/23/EC ΟΔΗΓΙΑ ΠΕΡΙ ΧΑΜΗΛΗΣ ΤΑΣΗΣ (αφορά μονον προϊόντα που λειτουργουν με ηλεκτρικο ρευμα)</p>	SI	<p>IZJAVA O SKLADNOSTI Trelawny SPT Limited pod polno odgovornostjo izjavljamo, da so spodaj navedeni proizvodi, ki jih dobavljamo/proizvajamo: Ime proizvoda Model, serijska številka Leto proizvodnje na katere se ta dokument nanaša, proizvedeni v skladu z določili naslednjih direktiv, normativnih dokumentov in njihovih relevantnih standardov: 98/37/EC DIREKTIVA O STROJIH 73/23/EC DIREKTIVA O STROJIH Z NIZKO VOLTAŽO (nanaša se samo na proizvode na električni pogon)</p>
HU	<p>MEGFELÉLŐSÉGI NYILATKOZAT Mi, A "Trelawny SPT Limited" cég Felelősségünk tudatában kijelentjük, hogy mint a termék szállítója/ gyártója Termék neve Típus, Sorozatszám Gyártási év amelyre jelen dokumentum vonatkozik, megfelel az alábbi Irányelv(ek), Irányadó Dokumentumok előírásainak, és az azokat meghatározó szabványoknak: 98/37/EC GÉPÉSZETI IRÁNYELVEK 73/23/EC KISFESZÜLTÉGŰ IRÁNYELVEK (Csak az elektromos meghajtású gépeknél)</p>	TR	<p>UYGUNLUK BEYANI Trelawny SPT Limited Aşağıdaki, üretim ve tedarikinden tek başına sorumlu olduđu ürünün Ürün adı Model/Seri no Üretim yılı bu belgenin ilgili olduđu aşağıdaki yönetmeliklerin, norm belgelerinin ve ilgili standartlarının kopullarına uygun olduđunu beyan eder: 98/37/EC MAKYNALAR YONETMELYDY 73/23/EC DUBUK GERLYM YONETMELYDY (Yalnzyz elektrikle calypan ürünlerde gezerlidir)</p>
IT	<p>DICHIARAZIONE DI CONFORMITÀ La Società Trelawny SPT Limited Dichiara, sotto la propria responsabilità, che la fornitura / produzione del prodotto Nome prodotto Modello, codice Anno di produzione a cui si riferisce tale documento è conforme alle seguenti Direttive, ai documenti della Normativa ed ai relativi standard: 98/37/EC DIRETTIVA SULLE APPARECCHIATURE 73/23/EC DIRETTIVA SUL BASSO VOLTAGGIO (applicabile esclusivamente per i prodotti che utilizzano energia elettrica)</p>		

OPERATION

Foreword

Thank you for your purchase of the TRELAWNY Professional use A45 Industrial Vacuum Cleaner.

This manual contains the necessary maintenance information for you to ensure proper operation and care for this machine.

It is essential for you to read through this manual thoroughly.

In the unlikely event that you experience problems with your A45 Vacuum, please do not hesitate to contact your local Trelawny dealer or agent. We always welcome feedback and comments from our valued customers.

General Information

Before operating, performing maintenance or repairing the A45 Industrial Vacuum Cleaner, this manual must be read and understood by the operator, if in any doubt, ask your supervisor before using this equipment.

Local safety regulations must be followed at all times. Failure to follow these instructions could result in damage to the A45 Vacuum and/or personal injury.

Trelawny SPT Limited disclaims all responsibility for damage to persons or objects arising as a consequence of incorrect handling of the machine, failure to inspect the machine for damage or other faults that may influence the operation prior to starting work, or failure to follow the safety regulations listed or applicable to the job site.

This machine is primarily designed for the containment of nuisance dust and dust collection.

HEPA filtered vacuum system is available, which will contain 99.97% (DOP) of all air borne dust when removing toxic or contaminated products.

It can be used both indoors and outside in dry weather only. This machine is not water proof, avoid splashing with water if using to collect fluid spills.

Safety

The person in charge of safety shall be responsible for informing workers about the risks associated with vacuum cleaner operations.

Train operators in the correct use and maintenance of the vacuum in order to protect themselves and others from hazards.

Failure to observe basic safety regulations and precautions could cause accidents during the vacuum cleaners operation, maintenance or repair.

Trelawny shall under no circumstances be deemed liable for accidents or damage caused by use of the vacuum cleaner by personnel not properly trained or who use it in an improper manner.

The safety precautions and warning notices are indicated in this manual and on the product.

Unless these hazard messages are heeded, the operator could become involved in accidents with serious consequences for him/herself and others.

Trelawny cannot foresee all possible circumstances capable of representing a potential hazard, therefore the warnings in this manual and on the product should not be deemed exhaustive.

Only ever use original Trelawny spare parts

Trelawny declines all liability in the event of non-original spare parts being used.

In the event of tools, procedures or work methods used that are not explicitly recommended by Trelawny, ensure no hazards exist for the operators and others.

Further advice is available from our Technical Department.

The employer must inform and train the user according to the provisions of applicable local laws.

Before using the machine, prepare and train yourself by reading this manual carefully.

Use of the machine by untrained and unauthorised persons is forbidden.

Do not use the machine to vacuum toxic substances unless it has been equipped with the special filters required for the specific type of dust.

Such filters must be explicitly requested by you.

Do not vacuum flammable materials or substances or which could cause explosions (fuels, solvents, etc.). To vacuum such materials, the machine must be built with anti-explosion motor and electric system and this must be requested by you explicitly.

Do not vacuum corrosive substances unless the machine is equipped with containers suitable for this purpose (Stainless-steel AISI 304).

Use of the machine without the supplied filters is not recommended.

If the machine is used to vacuum toxic/harmful substances, the container must be emptied and the filters cleaned using adequate Personal Protection Equipment.

This machines motor casing contains electrical components which must not be dismantled by the user.

When using the machine, be aware of other people around you.

Use the machine cautiously on slopes and ramps. Do not change direction on gradients.

Make sure the parked machine remains stable by operating the braked wheel.

Do not open the vacuum container with the motor running.

OPERATION

Pre-Start Check

Check all bolts and screws for tightness. Ensure that all fittings are secure.

This specific vacuum cleaner model has been designed, built and protected for vacuuming dusts and solid **and also liquids**, but **only within the capacity of the container**.

SEE BELOW for filter options.

To ensure the correct operation of the vacuum cleaner, this must be positioned protected against atmospheric agents (rain, hail, snow, fog, dusts in suspension, etc.) with an environmental running temperature between 5°C and 45°C and relative humidity not above 70%. The work environment must be clean, well-ventilated and devoid of explosive atmosphere.

The vacuum cleaner must not be used in environments containing substances in the form of liquids that could vaporise at room temperature and flammable dusts and gas. All cables should be fully uncoiled and never left wrapped around cable reels or tied in loops.

OPTIONAL FILTERS

Besides the optional **HEPA filter (303.5262)**, and depending on the dust to be vacuumed, the following filters are also available:

Antistatic filter

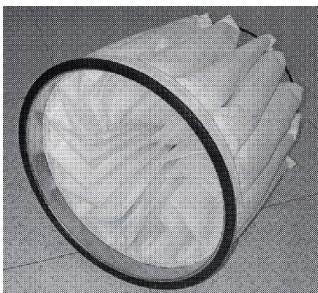
For electrostatic dust.

Nomex filter

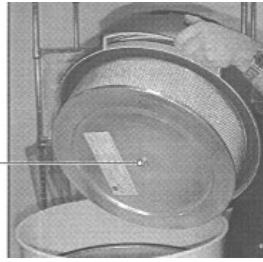
For hot dusts up to 240°.

Polyester filter cat.M

For very fine dusts, the polyester filter are BIA institute certified.



To change the filter, switch off the vacuum cleaner and remove the plug from the power socket, release and remove the upper cap and then loosen nut (A).



REMOVABLE CYCLONE

The cyclone is a treated steel cone that separates the filtering chamber from the container. This is positioned above the vacuum inlet and below the filter. Its job is to protect the filter from hot or sharp solid bodies and nebulised liquids.



Part numbers: 303.5474 (for liquids and solids) and 303.5478 (for dust)

BAG RETENTION RING

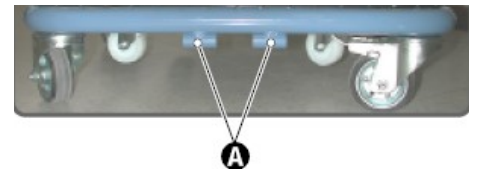
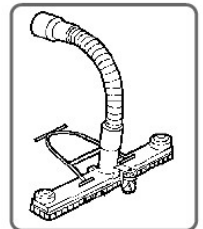
This optional can be requested when the vacuumed material is to be collected in a disposable nylon bag fitted in the container. It allows keeping open the nylon bag, which is subject to vacuum, for correct use.



Part number:
303.5479

WET/DRY PICKUP

The bracket of the WET-DRY accessory must be secured to the vacuum cleaner frame by means of the special front mounting point (A).



Part number:
303.5472

SIEVE CONTAINER

This accessory separates the liquids from the solids. The solids remain in the top gridded basket, while the liquids deposit on the bottom of the container.

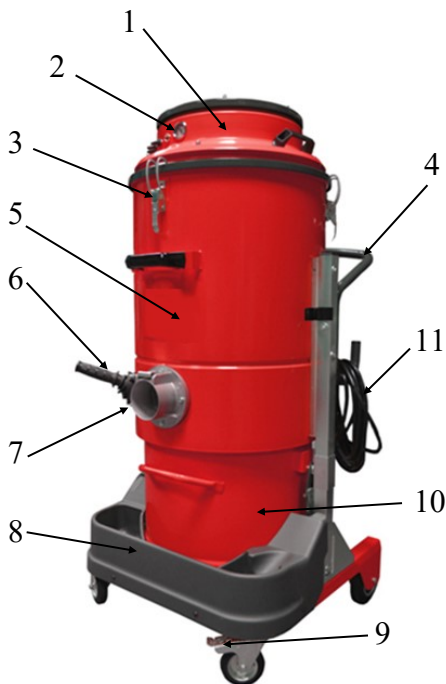


Part Number:
303.5471

OPERATION

Starting

Description of controls



- 1) Motor unit
- 2) On/Off Switches & Gauge
- 3) Release Fasteners
- 4) Removable Vacuum Material Container
- 5) Filter Chamber
- 6) Filter Shaker Lever
- 7) Vacuum Connection
- 8) Accessory Tray
- 9) Braked Castor Wheel
- 10) Removable Material Container
- 11) Cable storage Bracket
- 12) Push Handle



- 1) START/STOP switch motor 1
- 2) START/STOP switch motor 2
- 3) START/STOP switch motor 3
- 4) Green light POWER ON
- 5) Vacuum meter

240v Motor

Take particular care when using 240v Machines, ensure that the electrical supply is earthed and that breakers and fuses are correct for the loading.

The 240v motor requires the minimum of a 20amp, 220v power supply.

To avoid voltage drop, always use the shortest possible length of extension cable.

Maximum length of cable 30 meters.

Fit the accessory required for the type of vacuuming operation on the opposite end of the hose.



Note: Standard accessories (reducers, hoses, nozzles) are included with the vacuum. Any other accessories must be specified and ordered separately.

Fit the supplied connector on the pipe union.



Fit the supplied pipe in the connector.



Make sure the power supply corresponds to the voltage and frequency indicated on the vacuum cleaner plate.

IMPORTANT: Do not plug in the power socket with wet hands

In the event of an extension being used, make sure this is in perfect condition, in compliance with EC standards and with cable cross section suitable for the power input of the vacuum cleaner.

Operation

Lock the front castor wheel (7). Grip one end of the flexible hose complete with selected accessory.

To start, switch on individual motors as required, and start vacuuming.

To stop the vacuum cleaner, return all the switches to the off position.

Caution:

Before switching the vacuum cleaner back on, ensure the motors have come to a complete halt.

After finishing work, disconnect the vacuum cleaner from the power supply.

Lift the handle in the bottom part of the cleaner to release and remove the container.



Empty the contents of the container into a special waste disposal container in accordance with local laws applicable in the country where the vacuum cleaner is used.

When contacting Trelawny SPT Ltd or thier agent, always quote the details shown on the vacuum cleaner serial plate.

OPERATION & MAINTENANCE

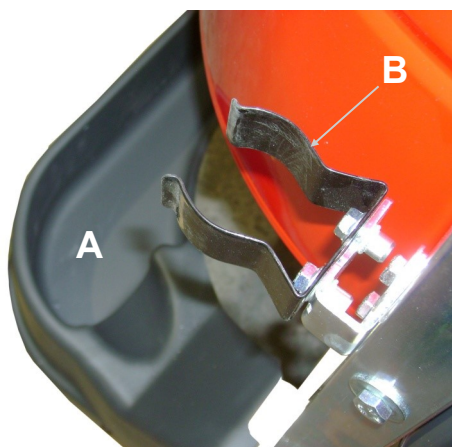
Using the filter cleaning system.

These following operations must only be performed with the machine switched off once the motor has come to a complete halt.



The filter cleaning system is best operated every time before use and after prolonged operation.

For greater convenience, the most frequently used accessories can be placed in the special accessory basket (A) and tube holder (B).



This should be emptied when the vacuumed material has reached 3/4 of maximum capacity.

On the front of the vacuum cleaner is a vacuum meter indicating the degree of vacuum inside the vacuum cleaner.

If, with the vacuum cleaner working and the vacuum inlet free, the vacuum meter lever indicates an irregular depression level, the filter will have to be shaken by means of the special lever.

If the arrow of the vacuum meter stays in the red area even after cleaning the filter, the hose or suction accessory could be blocked. In this case, clean and remove the blockage.

MAINTENANCE

This section describes the control and special maintenance operations crucial for keeping the vacuum cleaner in perfect working condition.

Any other jobs which might be necessary to eliminate operating faults must be expressly authorised by the manufacturer. In such cases, always supply the identification details of the cleaner.

In the case of major repairs, it is best to contact an authorised dealer.

General safety precautions

Maintenance jobs must always be performed by skilled technicians, trained to carry out their specific jobs. In the case of this machine, these are:

Mechanical maintenance
Electrical maintenance

The Safety Manager has the precise duty of determining the professional capacities and skills of such persons.

Before doing any maintenance job, the safety manager must:

Make sure there are no unauthorised persons in the work area.

Make sure the necessary tools are on hand and that these are in good condition.

Make sure that lighting is adequate.

Make sure the maintenance engineer is equipped with all approved individual protection devices needed for the specific operation (gloves, eyewear, shoes, etc.)

Make sure the maintenance engineer has carefully read the instructions contained in this manual and knows how the vacuum cleaner works.

Before carrying out a maintenance job, the maintenance engineer must:

Disconnect the plug from the power socket.

Work done on motors or other electrical component parts must only be performed by a specifically trained electrician, authorised by the Safety Manager.

Always use tools that are in perfect condition and specifically made for the operation to be done.

The use of unsuitable tools or tools not in good condition could cause serious damage.

Maintenance checks

For efficient vacuum cleaner operation, a number of controls are best made periodically:

Check to see whether the filter is worn or has become too permeable.

Make sure the sealing gaskets of the motor head base and of the filter-holder ring and of the container are working efficiently.

The electrical parts (plugs, switches, cables, etc.) must not be faulty.

The screws and nuts must always be tight.

Make sure the container is not overfull.

Check the integrity of the flexible vacuum hose and accessories to be used.

If the flexible hose is perforated, the power of the cleaner will be reduced and dust and liquids will leak into the environment.

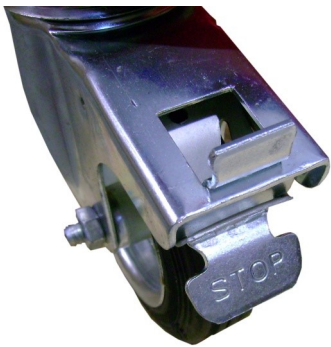
MAINTENANCE

Replacing the filters

To replace the filters, proceed as follows:

Turn off the vacuum cleaner by pressing down the motor **STOP** switches.

Disconnect the vacuum cleaner plug from the power socket.
Ensure front wheels are locked.



Lift the lever that locks the container.



Remove the container



NOTE:

Do not place hands on sides of container near the guide pins while re-installing.

Perform the container locking operation by means of the lever located on the front, **USE BOTH HANDS !!**

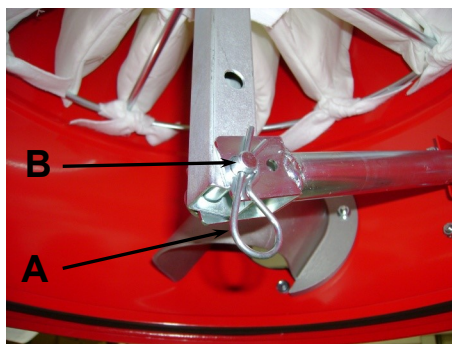
Release the levers that hold the motor head.



Lift the motor head by means of the handles provided and rest this on a support bench, take not to damage the power cable.



Remove from underneath the vacuum cleaner the pin (A) and spring pin (B) that fasten the filter to the shaking lever.



Lift out the filter complete with its support.

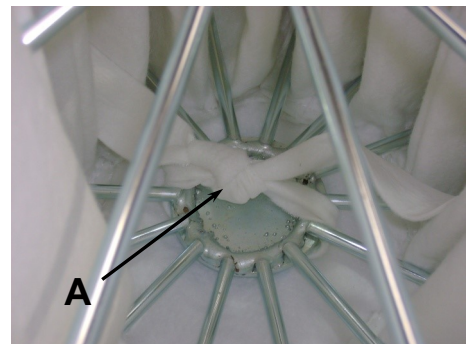


Unscrew the clamp and remove the support ring with seal.



Undo the tied knots from inside (A) and the underside, then remove the pocket filter.

Fit the new filter, put everything back together carefully securing all ties and fit the cap back on.



The container locking operation must be performed by one person only, who must lower the lever with both hands to lock the canister in position.



Important:

All material trapped and contained within the filter must be disposed of according to the local legislation

RECOMMENDED PARTS AND FAULT FINDING

PART NUMBER	DESCRIPTION
303.5282	Polyester Filter with 20 Pockets 20000 CM ² Ø500
303.5289	Filter-Holder Seal Ø500
303.5493	Filter Clamp Ø500
303.5293	Container / Chamber Seal Ø500
303.5306	Adhesive Gasket

FAULT	CAUSE	ACTION
The cleaner fails to start.	No power.	Check the power mains supply. Check the integrity of the plug and power cable.
	Loose wiring, incorrect voltage, or blown fuse.	Check connections and power supply or replace fuse.
Dust is leaking out	Perforated vacuum pipe.	Replace the pipe.
	Perforated filter.	Replace the filter.
	Filter unsuitable for type of job.	Fit a suitable filter for the type of material to be vacuumed.
The vacuum cleaner does not work as it should.	Pipe perforated or blocked.	Check the pipe and, if necessary, replace.
	Container full	Empty container.
	Filter blocked.	Replace filter.
	Seals worn.	Clean the filter and if necessary change it.
	Air leak.	Check for any air leaks out of closing fasteners, tightening screws, container or filter chamber.
If problem has not been cured by any of the above actions, contact your local Trelawny SPT dealership for assistance.		

Machine Storage

Remove the filter and clean it, empty the container and store the vacuum cleaner in a place protected against condensation and at a temperature between 0°C and 40°C.

Cover with a nylon sheet to prevent accumulation of dust.

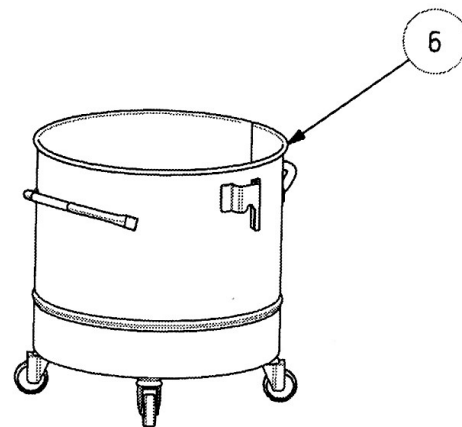
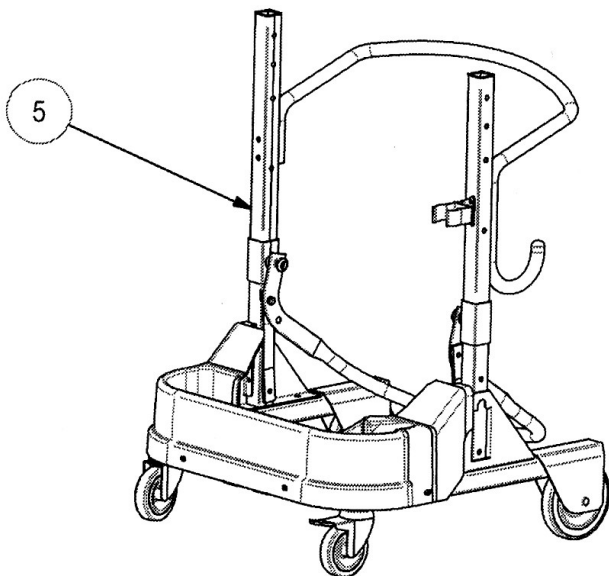
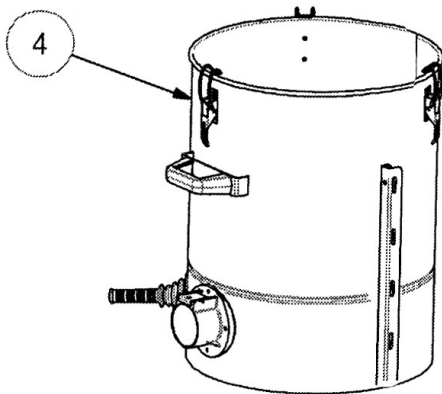
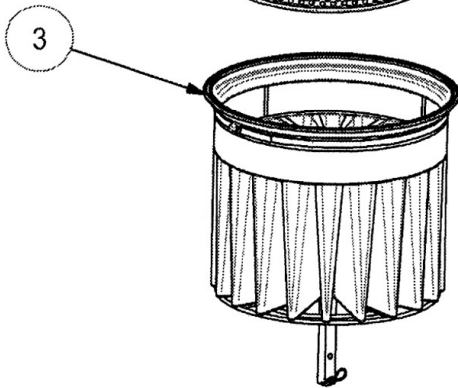
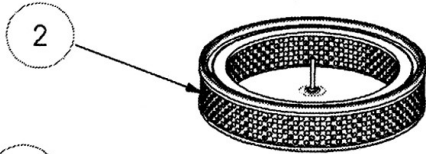
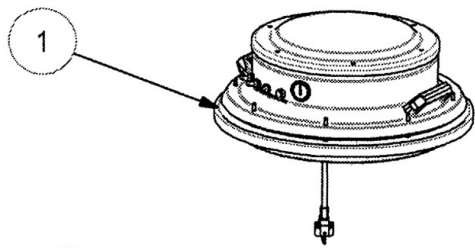
Scrapping

In case of scrapping, all the component parts of the vacuum cleaner will have to be disposed of through adequate disposal channels in accordance with applicable legislation.

Before scrapping, all plastic and rubber parts will have to be separated from the electrical material.

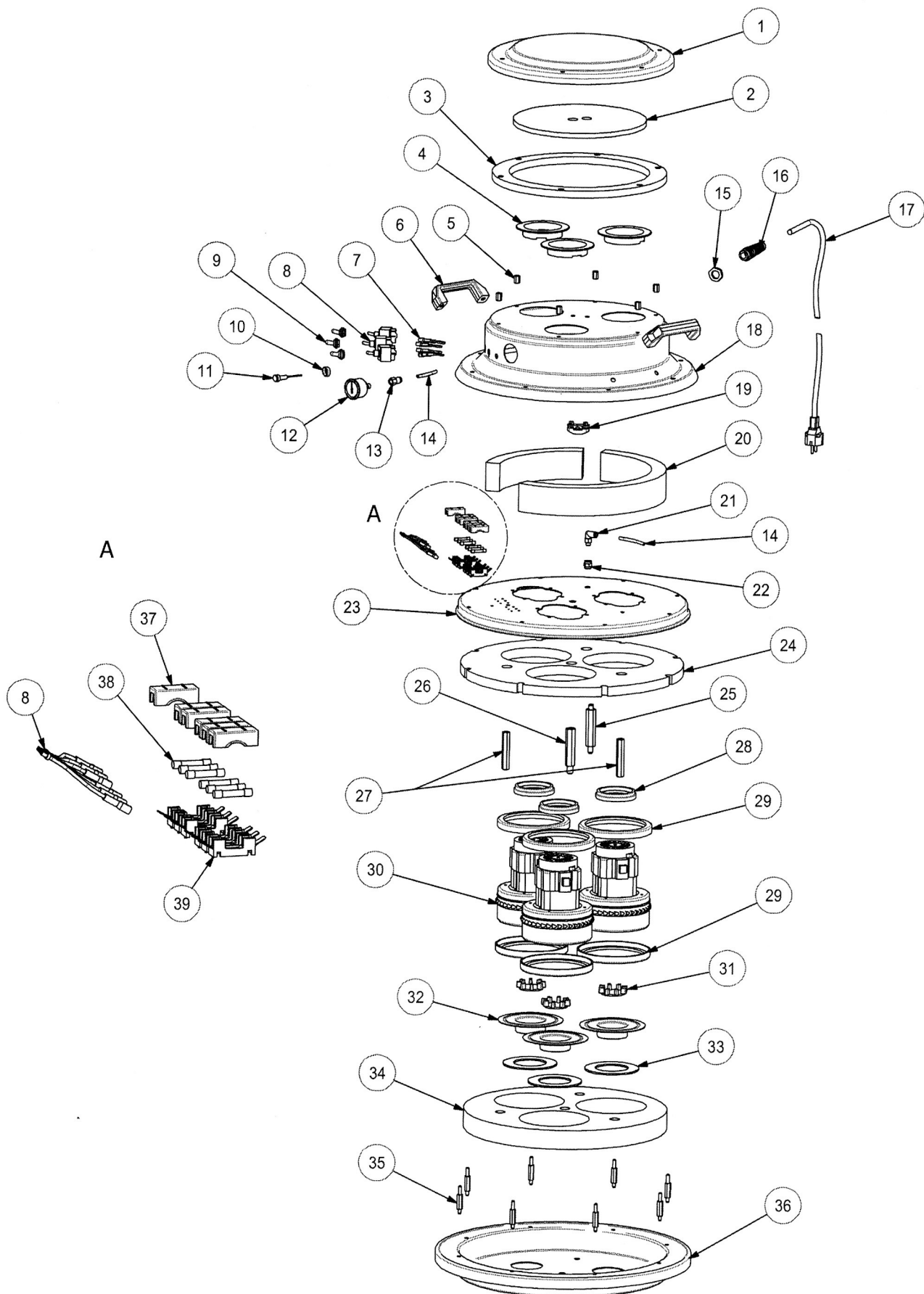
Most parts made from plastic, aluminium, copper or steel are suitable for recycling.

EXPLODED VIEW - MACHINE



Item	Part No	Description
1	303.5367	110v Motor Head Assembly
	303.5366	230v Motor Head Assembly
2	303.5373	HEPA Filter Kit
3	303.5368	Filter Assembly
4	303.5369	Chamber Assembly
5	303.5398	Frame Assembly
6	303.5376	Container Assembly

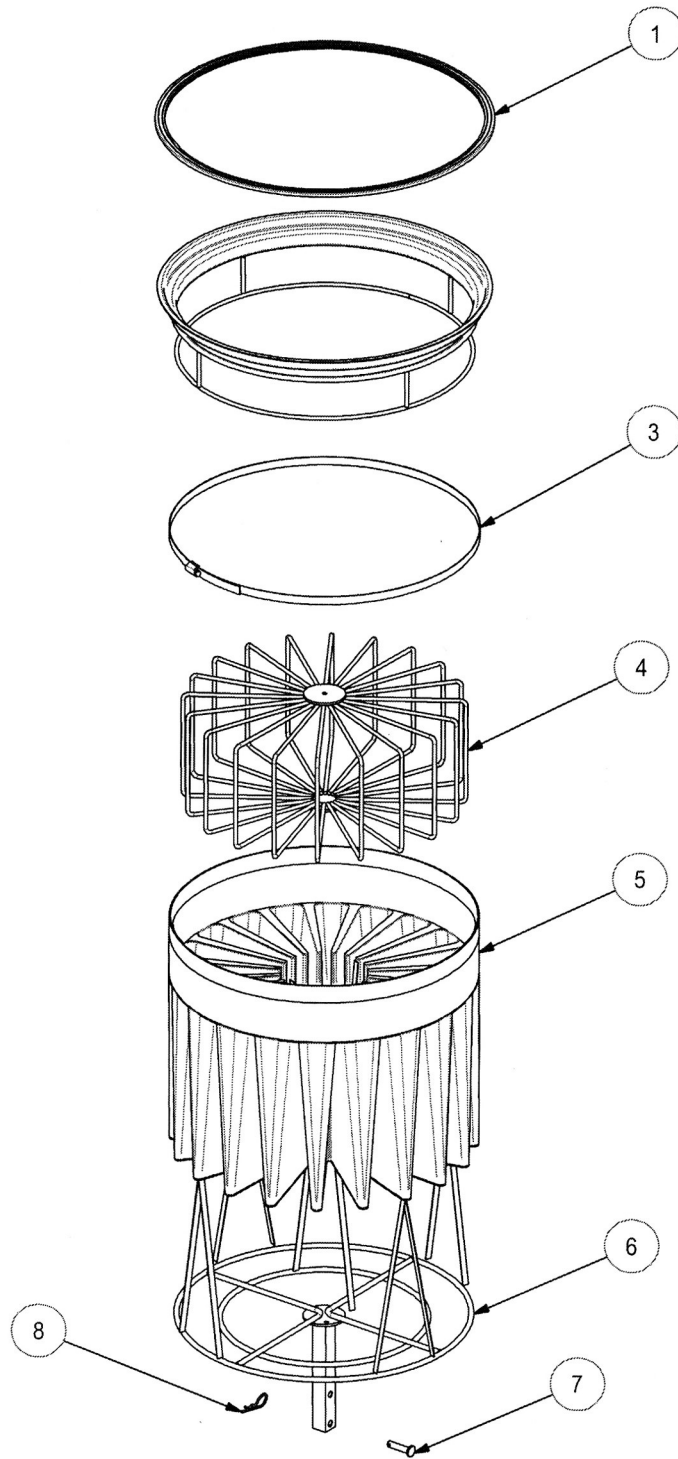
EXPLODED VIEW - MOTOR HEAD



EXPLODED VIEW - MOTOR HEAD

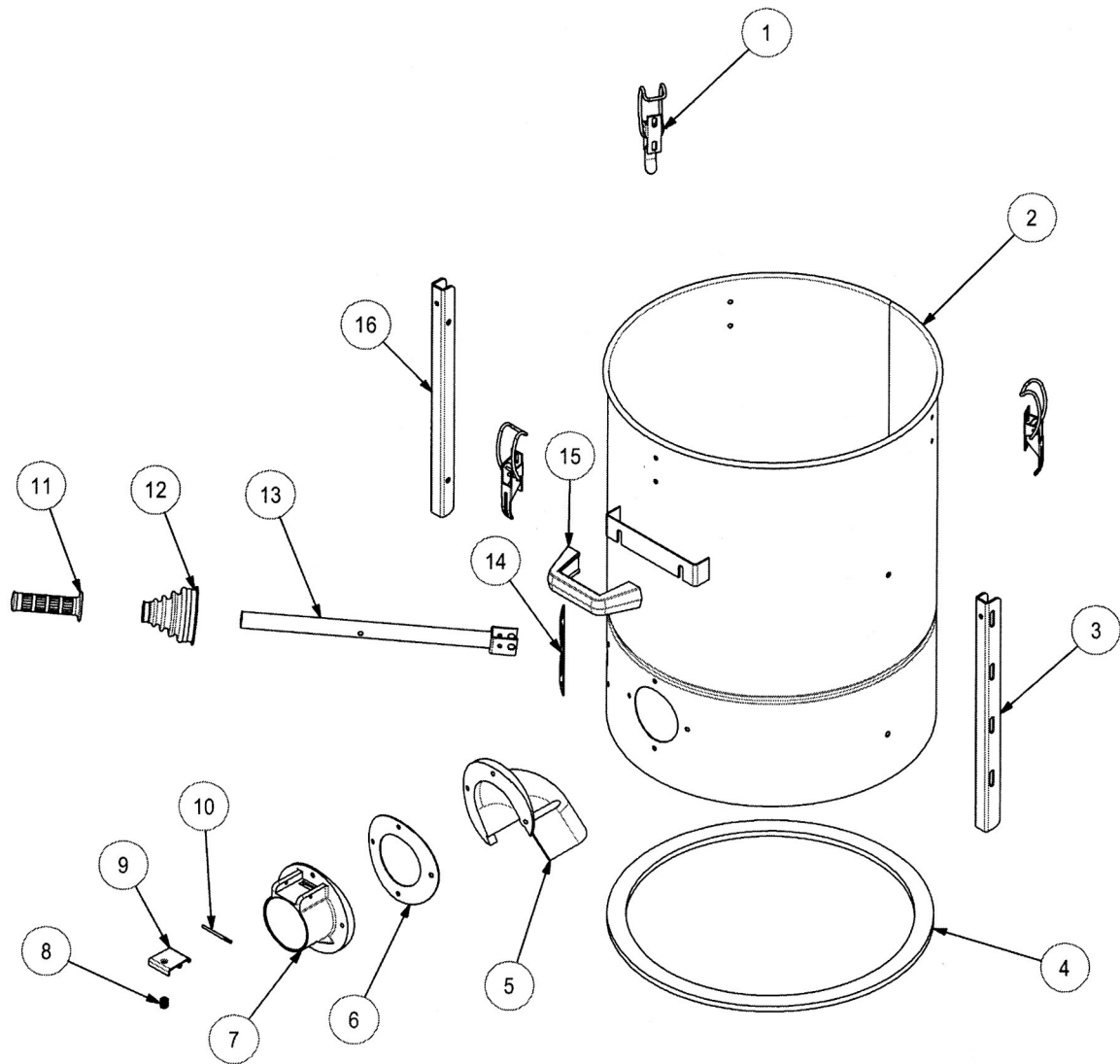
Item	Part No	Description	Item	Part No	Description
1	303.5090	Motor Head Cover	22	303.5514	1/8" Connection
2	303.5290	Cover Noise Damping Material	23	303.5107	Motor Fastener
3	303.5498	Filter Ring (3 x required)	24	303.5292	Motor Fastener Noise Damping Material
4	303.5535	Cooling Ring	25	303.5518	Motor Head Spacer (Male/Male)
5	303.5529	Motor Head Spacer (6 x required)	26	303.5582	Motor Head Spacer (Male/Female)
6	303.5495	Handle (2 x required)	27	303.5515	Motor Head Spacer (2 x Female/Female)
7	303.5197	230v Motor Head Wiring Kit	28	303.5540	Plastic Motor Ring (3 x required)
	303.5248	110v Motor Head Wiring (2 x Black Cable)	29	303.5300	Gasket (6 x required)
	303.5249	110v Motor Head Wiring (2 x Blue Cable)	30	303.5285	230v Electric Motor (3 x required)
8	303.5130	230v Switch (3 x required)		303.5284	110v Electric Motor (3 x required)
9	303.5131	Switch Rubber Covers (3 x required)	31	303.5520	Bottom Valve Plate (3 x required)
10	303.5245	Chrome Nut for Light	32	303.5525	Motor Bottom Plate (3 x required)
11	303.5132	Red Light	33	303.5350	Motor Bottom Plate Gasket (3 x required)
12	303.5178	Vacuum Gauge	34	303.5295	Base Plate Noise Damping Material
13	303.5157	Straight Pipe Coupling	35	303.5497	Master Motor Head Spacer (8 x required)
14	303.5215	Nylon Pipe (0.3m required)	36	303.5108	Base Plate
15	303.5195	Plastic Nut	37	303.5150	Fuse Cover (6 x required)
16	303.5135	Plastic Cable Fastener	38	303.5145	Fuse 10amp (6 x required) 230v Machines))
17	303.5137	230v Cable (10mtr)		303.5146	Fuse 15amp (6 x required) 110v Machines))
	303.5138	110v Cable (10mtr)	39	303.5230	Fuse Holder
18	303.5104	Cover	40	303.5197	230v Motor Wiring Kit
19	303.5180	Cable Fastener Support		303.5246	120v Motor Wiring Kit
20	303.5291	Cover Noise Damping Material	41	303.5230	30amp 250v Fuse Holder
21	303.5160	Swivel Elbow (push in fitting)			

EXPLODED VIEW - FILTER UNIT



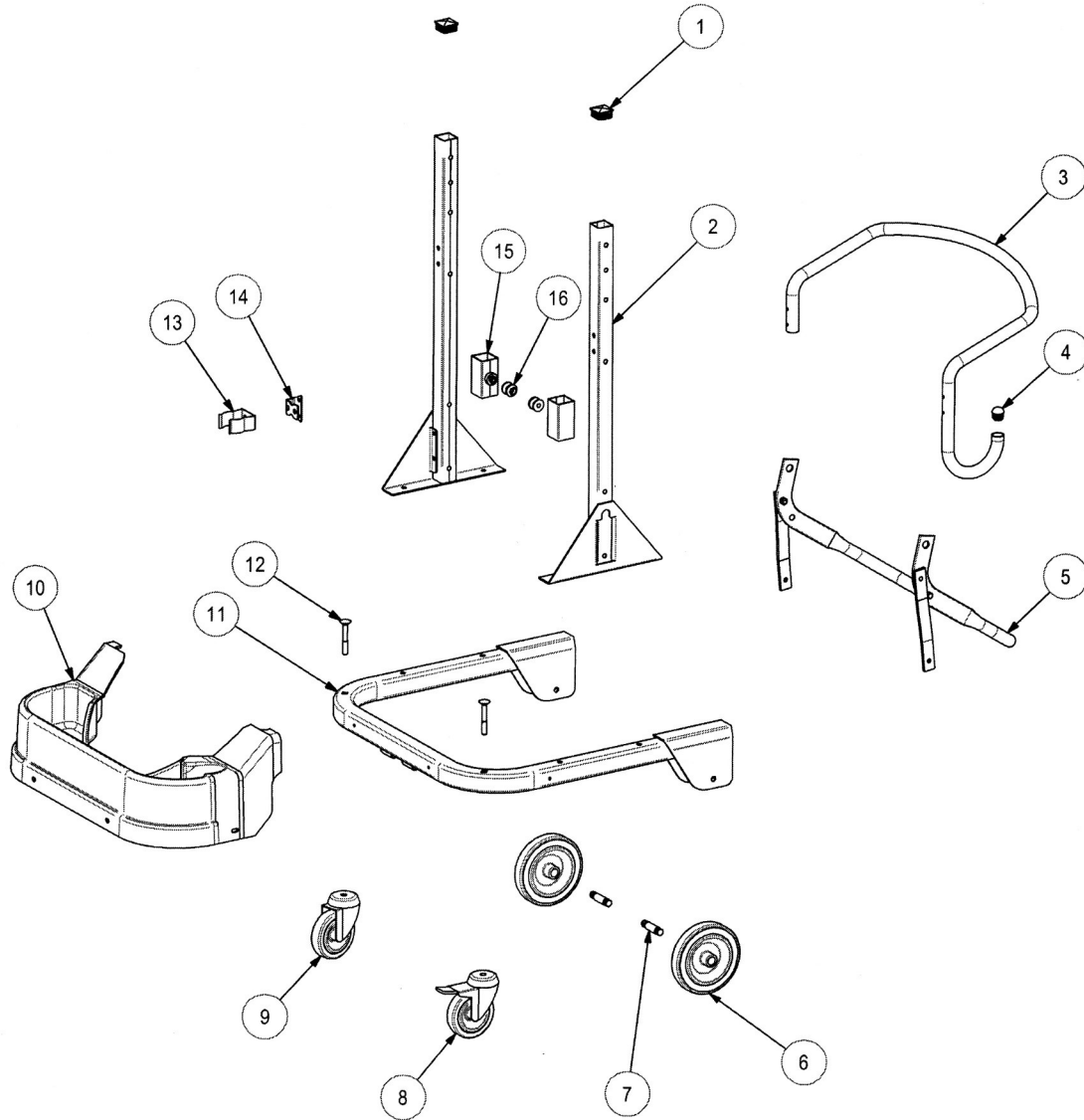
Item	Part No	Description
1	303.5289	Filter Gasket
2	303.5507	Filter Holding Ring
3	303.5493	Filter Clamp
4	303.5501	Filter Separator Cage
5	303.5282	20 Pocket "M" Polyester Filter (20 Pocket fitted to models 2021 onwards)
	303.5273	14 Pocket "M" Polyester Filter (14 Pocket fitted prior to 2021)
6	303.5502	Filter Shaker Cage
7	303.5503	Cage Lock Pin
8	303.5581	R-Clip

EXPLODED VIEW - FILTER CANISTER



Item	Part No	Description
1	303.5490	Toggle Clamp (3 x required)
2	303.5611	Chamber
3	303.5496	Right "U" Channel Mounting Bracket
4	303.5306	Adhesive Gasket
5	303.5500	Deflector
6	303.5305	Deflector Gasket
7	303.5499	Inlet Connector
8	303.5504	Spring
9	303.5506	Connector Latch
10	303.5508	Latch Pin
11	303.5491	Filter Shaker Handle
12	303.5492	Filter Shaker Lever Boot
13	303.5488	Filter Shaker Lever
14	303.5489	Filter Shaker Flange
15	303.4588	Canister Handle
16	303.5494	Left "U" Channel Mounting Bracket

EXPLODED VIEW - FRAME



Item	Part No	Description
1	303.5509	End Caps (2 x required)
2	303.5523	Frame Stanchion (2 x required)
3	303.5521	Push Handle
4	303.5519	Handle End Cap
5	303.5513	Container Lift Lever
6	303.5436	Large Wheel (2 x required)
7	303.5437	Wheel Axle (2 x required)
8	303.5451	Castor Wheel with brake
9	303.5453	Castor Wheel
10	303.5524	Accessories Holder Tray
11	303.5614	Frame Base
12	303.5455	Coach Bolt (2 x required)
13	303.5541	Spring Clip
14	303.5542	Spring Clip Mounting Bracket
15	303.5512	Slide Bracket (2 x required)
16	303.5511	Lift Lever Fulcrum (2 x required)

TECHNICAL SPECIFICATIONS

Model	110v	230v
Power (Watts)	3000	3450
Vacuum rate (Mm/H2O)	2.250	2.500
Max. Air flow (M ³ /h)	525	540
Noise level dB(A)	76	76
Filter type/ material	Polyester M	
Filtering surface (cm ²)	20,000	20,000
Capacity (Lt)	60	60
Vacuum inlet	Ø 80	
Dimensions (cm.)	58 x 60	58 x 60
Height (cm.)	135	135
Weight (Kg)	65	65
Package size / weight	65 x 65 x175mm	75kg

This tool has been designed and produced in accordance with the following directives:

- **2006/42/CE Machine directive**
- **2004/108/CE Electromagnetic compatibility directive**
- **2006/95/CE Low-voltage directive**

If your company has any problem with our products or would like to discuss the possibility of an improvement being made to them, then please do not hesitate to contact us. Your comments are both important and appreciated.

All rights reserved. Any unauthorised use or copying of the contents or part thereof is prohibited.

This applies to trademarks, model denominations, part numbers and drawings.

Use only genuine Trelawny spares.

The use of non-Trelawny spare parts invalidates the warranty.

Trelawny SPT Ltd
13 Highdown Road, Sydenham Industrial Estate, Leamington Spa,
Warwickshire, CV31 1XT, United Kingdom
Telephone: +44 (0)1926 883781 - Fax: +44 (0)1926 450352
Email: sales@trelawny.co.uk

© TSPT UK 2023 Part No: 735.6045 issue 25.9.23



www.trelawny.com