

TCG250 VM 82v FLOOR GRINDER

OPERATION & MAINTENANCE MANUAL



CONTENTS

INTRODUCTION	3
GENERAL INFORMATION	3
CE DECLARATION OF CONFORMITY	4
UKCA DECLARATION OF CONFORMITY	5
DECLARATION OF CONFORMITY	6
HAND ARM VIBRATION	7
WARRANTY	7
GENERAL SAFETY	7
BATTERY SAFETY	8
CHARGER SAFETY	8
BATTERY CHARGING	9
PRE START CHECKS (DAILY)	9
STARTING WORK	9
CONTROL PANEL OPERATION	10
OPERATION	11
SERVICING & MAINTENANCE	12
MACHINE STORAGE	13
MAINTENANCE SCHEDULE	13
PPE & WARNING SYMBOLS	14
TROUBLE SHOOTING	15
EXPLODED VIEW - MACHINE	16
PARTS LIST - MACHINE	17
EXPLODED VIEW - CONTROL PANEL	18
PARTS LIST - CONTROL PANEL	19
MEDIA TYPES - GRINDING DISCS	20
MEDIA TYPES - QR GRINDING TOOLS	20
MEDIA TYPES - QR POLISHING TOOLS	21
TECHNICAL SPECIFICATIONS	22
TECHNICAL SPECIFICATIONS	23
NOTES	23
CONTACT US	24

INTRODUCTION

Thank you for choosing a product by Trelawny SPT Ltd, an innovative leading brand in the Surface Preparation sector.

This product has been manufactured under stringent quality standards to meet superior performance criteria. This manual contains the necessary maintenance information for you to ensure proper operation and care for this equipment.

In the unlikely event that you experience a problem please do not hesitate to contact your local Trelawny dealer or agent. We always welcome feedback and comments from our valued customers.



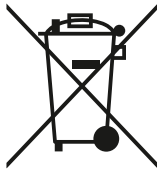
WARNING:

Carefully read through these original instructions before using your new TRELAWNY Equipment. Take special care to read warnings. TRELAWNY products have many features that will make your job faster and easier. Safety, performance, and dependability have been given top priority in the development of this product, making it easy to operate and maintain.



ENVIRONMENTAL PROTECTION:

The equipment, accessories and packaging should be sorted for environmentally friendly recycling. The plastic components are labelled for categorised recycling.



DISPOSAL:

Waste products should not be disposed of with household waste. Please recycle where facilities exist. Check with your local authority or retailer for recycling advice.

GENERAL INFORMATION

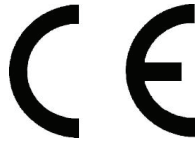
Before operating any TRELAWNY equipment, this manual must be read and understood by the operator, if in any doubt ask your supervisor before using this equipment. Failure to follow these instructions could result in damage to the equipment and/or personal injury.

Trelawny SPT Ltd disclaims all responsibility for damage to persons or objects arising as a consequence of incorrect handling of the equipment, failure to inspect the equipment

prior to starting work for damage or other faults that may influence the operation of safe working of the equipment, or failure to follow the safety regulations listed or applicable to the job site.

Operators should be familiar with the data given in the specification section. Please keep these instructions in a safe and accessible place.

CE DECLARATION OF CONFORMITY



EU Declaration of Conformity

We, Trelawny SPT Ltd of 13 Highdown Road, Sydenham Industrial Estate, Leamington Spa, Warwickshire, CV31 1XT, GB declare that the DoC is issued under our sole responsibility and belongs to the following product:

PART NUMBER

DESCRIPTION

SERIAL NUMBER

YEAR OF CONSTRUCTION



The object of the declaration described above is in conformity with the relevant **Union Harmonisation Legislation:**

- 2006/42/EC Machinery Directive
- 2014/30/EU EMC Directive
- 2014/35/EU Low Voltage Directive
- 2011/65/EU Restriction of Hazardous Substances Directive

The following harmonised standards and technical specifications have been applied:

- EN ISO 12100:2010 Safety of machinery
- EN 60204-1:2018 Safety of machinery. Electrical equipment of machines - General requirements
- EN ISO 4871:2009 Acoustics. Declaration and verification of noise emission values of machinery and equipment

Technical files are held by Indutrade Benelux BV, Anton Philipsweg 1, 1422 AL Uithoorn, Netherlands

Notified Body:
Not Applicable. Machinery is not listed under ANNEX IV of the Machinery Directive.

Place of Declaration:
Trelawny SPT Ltd, 13 Highdown Road, Sydenham Industrial Estate, Leamington Spa, Warwickshire, CV31 1XT, GB

Date of Declaration:
December 2024

Signed by:

Daniel Rowledge
Managing Director

UKCA DECLARATION OF CONFORMITY



UKCA Declaration of Conformity

We, **Trelawny SPT Ltd of 13 Highdown Road, Sydenham Industrial Estate, Leamington Spa, Warwickshire, CV31 1XT, GB** declare that the DoC is issued under our sole responsibility and belongs to the following product:

PART NUMBER

DESCRIPTION

SERIAL NUMBER

YEAR OF CONSTRUCTION

The object of the declaration described above is in conformity with the relevant **Statutory Requirements**:

- **2008 No. 1597** Supply of Machinery (Safety) Regulations 2008
- **2016 No. 1091** Electromagnetic Compatibility Regulations 2016
- **2016 No. 1101** The Electrical Equipment (Safety) Regulations 2016
- **2012 No. 3032** The Restriction of the Use of Certain Hazardous Substances in Electrical and Electronic Equipment Regulations 2012

The following designated standards and technical specifications have been applied:

- **BS EN ISO 12100:2010** Safety of machinery
- **BS EN 60204-1:2018** Safety of machinery. Electrical equipment of machines - General requirements
- **BS EN ISO 4871:2009** Acoustics. Declaration and verification of noise emission values of machinery and equipment

Technical files are held by **Daniel Rowledge** at the Trelawny address stated above.

Approved Body:

Not Applicable. Machinery is not listed under ANNEX IV of the Supply of Machinery (Safety) Regulations 2008

Place of Declaration:

Trelawny SPT Ltd, 13 Highdown Road, Sydenham Industrial Estate, Leamington Spa, Warwickshire, CV31 1XT, GB

Date of Declaration:

December 2024

Signed by:

Daniel Rowledge
Managing Director

TCG250 VM 82v FLOOR GRINDER

DECLARATION OF CONFORMITY

<p>CZ Prohlášení o přizpůsobení My, společnost Trelawny SPT Limited podávamej daňové přiznání, že výrobek a dodávka výrobku název výrobku Model, výrobní číslo Rok výroby Pro které se průkaz týkající, je přizpůsobení s zásoy od následující příkazov a jejich pohotovostni: 2006/42/EC Příkaz soustrojí 2014/35/EC Příkaz nízkého napětí (upofitebilité jedině do výrobku použítí elektrické energie)</p>	<p>LT ATITIKTIES DEKLARACIJA Mes, Trelawny SPT Limited Prisiidami visą atsakomybę deklaruojame, kad tiekiamas / gaminamas produktas Produkto pavadinimas Modelis, serijos numeris Pagaminimo Kuriam laikoma ši deklaracija, atitinka šių direktyvų, norminių aktų ir su jais susijusių, standartų reikalavimus: 2006/42/EC Įtango direktyva 2014/35/EC Žemos įtampos direktyva (laikoma tik elektriniams įrengimams)</p>
<p>DE Übereinstimmungserklärung Wir, Trelawny SPT Limited erklären, dass unter unserer alleinigen Verantwortung für die Lieferung und Herstellung des Produktes Name des Produktes Model, Seriennummer Jahr der Herstellung auf welches sich dieses Dokument bezieht, stimmt mit den Vorgaben der folgenden Direktive, normativen Dokumente und deren jeweiligen Maßstabe ein: 2006/42/EC Maschineriedirektive 2014/35/EC Niederspannungsrichtlinie (nur zutreffend auf Produkte, die Strom benutzen)</p>	<p>MT DIKJARAZZJONI TA KONFORMITA Ahna, Trelawny SPT Limited Niddikjaraw li ahna responsabbli kompletament għal provista / manifattura tal-prodott hawn 1msemmi: Isem Il-Prodott Mudell, Serial number Sena li 'produzzjoni Dan id-dokument magħmul għal prodott imsemmi hawn fuq, li huwa skond il-provizjonijiet imsemmija fid-dokumenti tal-klassi tax-xogħol: 2006/42/EC Machinery Directive 2014/35/EC Low Voltage Directive (tapplika biss għal prodotti li jahdmu bi-elekttriku)</p>
<p>DK Erklæring om overensstemmelse Vi, Trelawny SPT Limited Erklærer hermed at under vores ene forhandling ansvar for vores forhandling/produktion af produktet Produkt navn Model, serie nummer Produktionsår For hvilket dette dokument referer, at deler i overensstemmelse med bestemmelser af følgende direktiver, normative dokumenter og deres relevante standard: 2006/42/EC Machinery directive 2014/35/EC Low voltage directive</p>	<p>NL EENVORMIGHEIDSVERKLARING Wij, Trelawny SPT Limited Verklaaren dat wij de volledige verantwoordelijkheid dragen voor het leveren/fabriceren van het volgende product: Naam van het product Type, Serienummer Productiejaar En verklaaren dat het product waarnaar dit document verwijst eenvoudig is met de voorzieningen van de volgende Richtlijn(en), Normatieve Documenten en hun relevante Standaarden: 2006/42/EC MACHINERIECHTLIJN 2014/35/EC LAAGSPANNINGSRICHTLIJN (uitsluitend van toepassing bij producten die elektrische stroom gebruiken)</p>
<p>EE TOOTE VASTAVUSE DEKLARATSIOON Meie, Trelawny SPT Limited Deklareerime, et vastutame järgmise varustuse/toote müügi eest Toote nimetus Mudel, Seeria number Aegsita loodängu Arstul dokument lüendab toote vastavust järgmistele direktiivide/lele, normatiividele ja nendega samaväärsetele standardidele: 2006/42/EC MASINA DIREKTIIVID 2014/35/EC MADALPINGE DIREKTIIVID (Kohandatakse vaid tootele, mis kasutavad elektrivoolu)</p>	<p>PL Deklaracja Zgodności My, Firma Trelawny SPT Limited. oświadczamy w naszej odpowiedzialności, że produkcja i dostawa urzadzzenia Nazwa produktu Model, numer seryjny Rok produkcji do którego ten dokument należy, jest zgodne z klauzulami następujących zarządzeń i ich istotnych standardów: 2006/42/EC Zarządzenie mechaniczne 2014/35/EC Zarządzenie niskiego napięcia elektrycznego (Zastosowanie tylko przy urządzeniach elektrycznych)</p>
<p>ES Declaración de Conformidad Nosotros, Trelawny SPT Limited Declaramos que bajo nuestra completa responsabilidad de la fabricación/suministro del producto Nombre del Producto Modelo, No de Serie Año de producción A quien este documento se refiere, está de acuerdo con lo relacionado en la Directriz, Normativa Documentada y sus relevantes standards: 2006/42/EC Directorio de Maquinaria 2014/35/EC Directorio de Bajo Voltaje (Aplicable solamente a productos que funcionen con electricidad)</p>	<p>PT DECLARAÇÃO DE CONFORMIDADE CE A empresa TRELAWNY SPT LIMITED Declara, sob sua inteira responsabilidade, que o fornecimento/fabrico do seguinte produto: Designação do produto Modelo, Número de Série Ano de produção a que esta declaração se refere, está em conformidade com o preceituado nas Directivas e Normas Comunitárias abaixo indicadas: 2006/42/EC DIRECTIVA DE MÁQUINAS 2014/35/EC DIRECTIVA DE BAIXA VOLTAGEM (Aplicável apenas a produtos que utilizam energia eléctrica)</p>
<p>FI ILMOITUSVAHVISTUS Me, Trelawny SPT Limited Valvistanime tuotteen toimittamisesta/valmistamisesta Tuotteen nimi Malli, sarjanumero Valmistusvuosi Täällä todistuksella vahvistamme säädökset seuravien ohje/ohjesien, Yleisin papereihin ja niihin liittyvät vaatimukset: 2006/42/EC KONEISTON OHJEET 2014/35/EC PIENJÄNNITTE OHJEET (tarvitaan ainoastaan tuotteille jotka käyttävät sähkövoimaa)</p>	<p>RU СВИДЕТЕЛЬСТВО О СООТВЕТСТВИИ Мы, Trelawny SPT Limited Заявляем, что несем полную ответственность за поставку/производство нижеуказанной продукции Наименование изделия Модель, серийный номер Год выпуска на которую выдано настоящее Свидетельство, и которая соответствует положениям следующей(их) директиве(ы), нормативным документам и относящимся к ним стандартам: 2006/42/EC ДИРЕКТИВА ПО МЕХАНИЗМАМ 2014/35/EC ДИРЕКТИВА ПО НИЗКОВОЛЬТНОМУ ОБОРУДОВАНИЮ (распространяется только на изделия с электропитанием)</p>
<p>FR DÉCLARATION DE CONFORMITÉ Nous, soussignés Trelawny SPT Limited déclarons que le produit sous-nommé Nom du produit Modèle et Numéro de Série Année de production et pour lequel nous prenons entière responsabilité pour sa fourniture et manufacture, est conforme aux clauses des directives suivantes documents nominatifs et normes qui s'y appliquent: 2006/42/EC DIRECTIVE POUR LA MACHINERIE 2014/35/EC DIRECTIVE POUR BAS VOLTAGE (n'est applicable qu'aux produits utilisant l'énergie électrique)</p>	<p>SE FÖRSÄKRAN OM ÖVERENSSTÄMMELSE VI, TRELAWNY SPT LIMITED FÖRKLARAR ATT VI MED ENSAMT ANSVAR ANSKAFFAT / TILLVERKAT PRODUKTEN PRODUKTNAMN MODELL och SERIE NUMMER Tillverkningsår TILL VILKEN DETTA DOKUMENT HÄNVISAR ÄR I ÖVERENSSTÄMMELSE MED FÖLJANDE DIREKTIV, NORMATIVA DOKUMENT OCH DERAS RELEVANTA STANDARDER 2006/42/EC MASKINDIREKTIV 2014/35/EC LÅGSTRÖMSDIREKTIV (TILLÄMPLIG PÅ ELEKTRISK DRIVNA PRODUKTER)</p>
<p>GR ΔΗΛΩΣΗ ΠΙΣΤΟΤΗΤΑΣ Η εταιρεία Trelawny Spt Limited Δηλώνει ότι έχει τη μονδική ευθύνη ως κατασκευαστρια / προμηθευτρια του παρακάτω προϊόντος περιγραφη προϊόντος μοντέλο, αριθμός σειράς έτος παραγωγής και στο οποίο αναφέρεται αυτή η δήλωση, είναι συμβατό με τις προδιαγραφές που ορίζονται στις ακόλουθες Κοινοτικές Οδηγίες Ελεγκτικές Διατάξεις κι άλλες σχετικές προδιαγραφές 2006/42/EC ΟΔΗΓΙΑ ΠΕΡΙ ΜΗΧΑΝΗΜΑΤΩΝ 2014/35/EC ΟΔΗΓΙΑ ΠΕΡΙ ΧΑΜΗΛΗΣ ΤΑΣΗΣ (αφορά μόνον προϊόντα που λειτουργούν με ηλεκτρικό ρεύμα)</p>	<p>SI IZJAVA O SKLADNOSTI Trelawny SPT Limited pod polno odgovornostjo izjavljamo, da so spodaj navedeni proizvodi, ki jih dobavljamo/producirajamo: Ime proizvoda Model, serijska številka Leto proizvodnje na katere se ta dokument nanaša, proizvedeni v skladu z določili naslednjih direktiv, normativnih dokumentov in njihovih relevant- nih standardov: 2006/42/EC DIREKTIVA O STROJIH 2014/35/EC DIREKTIVA O STROJIH Z NIZKO VOLTAŽO (nanaša se samo na proizvode na električni pogon)</p>
<p>HU MEGFELELŐSÉGI NYILATKOZAT Mi, A "Trelawny SPT Limited" cég Felelősségünk tudatában kijelentjük, hogy mint a termék szállítója/gyártója Termék neve Típus, Sorozatszám Gyártási év amelyre jelen dokumentum vonatkozik, megfelel az alábbi Irányelv(ek), Irányadó Dokumentumok előírásainak, és az azokat meghatározó szabványoknak: 2006/42/EC GÉPÉSZETI IRÁNYELVEK 2014/35/EC KISFESZÜLTÉSŰ IRÁNYELVEK (Csak az elektromos meghajtású gépeknél)</p>	<p>TR UYGUNLUK BEYANI Trelawny SPT Limited Aşağıdaki, üretim ve tedarikinden tek başına sorumlu olduu ürünün Ürün adı Model/Seri no Üretim yılı bu belgenin ilgili olduu aşağıdaki yönetmeliklerin, norm belgelerinin ve ilgili standartları/nyın koullarına uygun olduunu beyan eder: 2006/42/EC MAKYNALAR YÖNETMELİYDİ 2014/35/EC DÜPÜK GERİLİM YÖNETMELİYDİ (Yalnızca elektrikle çalyan ürünlerde geçerlidir)</p>
<p>IT DICHIARAZIONE DI CONFORMITÀ La Società Trelawny SPT Limited Dichiaro, sotto la propria responsabilità, che la fornitura / produzione del prodotto Nome prodotto Modello, codice Anno di produzione a cui si riferisce tale documento è conforme alle seguenti Direttive, ai documenti della Normativa ed ai relativi standard: 2006/42/EC DIRETTIVA SULLE APPARECCHIATURE 2014/35/EC DIRETTIVA SUL BASSO VOLTAGGIO (applicabile esclusivamente per i prodotti che utilizzano energia elettrica)</p>	

HAND ARM VIBRATION

Trelawny Equipment may cause hand-arm Vibration Syndrome injury if their use is not adequately managed.

We advise you to carry out a risk assessment and to implement measures such as; limiting exposure time [i.e. actual trigger time, not total time at work], job rotation, ensuring the tools are used correctly, ensuring the tools are maintained according to our recommendations, and ensuring that the operators wear personal protective equipment (PPE) particularly gloves and clothing to keep them warm and dry.

Employers should consider setting up a programme of health surveillance to establish a benchmark for each operator and to detect early symptoms of vibration injury.

We are not aware of any PPE that provides protection against vibration injury by attenuating vibration emissions.

See 'Specifications' section for vibration emission data.

Further advice is available from our Technical Department.

We strongly advise you to visit the Health & Safety Executive website <http://www.hse.gov.uk/vibration> - this site provides excellent advice and information on HAV and currently, includes a Hand-Arm Vibration Exposure Calculator that is easy to use to work out the daily vibration exposure for each of your operators.

WARRANTY

When you choose TRELAWNY, you're investing in a product engineered for strength, durability, and unwavering reliability. Our equipment is built to endure the toughest challenges, showcasing over 80 years of craftsmanship in Surface Preparation Technology. We take pride in being the industry benchmark, offering not just a tool but a lasting companion for tough jobs, backed by a 12-month warranty for peace of mind.

Register your TRELAWNY product within 30 days of purchase by scanning the QR code to activate your warranty and enjoy the full support from our team.

PLEASE RETAIN YOUR PROOF OF PURCHASE, AS IT WILL BE REQUIRED TO PROCESS ANY WARRANTY CLAIMS.

The following are not covered under the Trelawny warranty:

- Damage caused by abuse, misuse, dropping or other similar damage caused by or as a result of failure to follow assembly, operation or user maintenance instructions.
- Alterations, additions or repairs carried out by persons other than Trelawny or their recognised agents.

- Transportation costs to and from Trelawny or their recognised agents, for repair or assessment against a warranty claim, on any equipment.
- Materials and/or labour costs to renew, repair or replace components due to fair wear and tear.

In no case whatsoever shall the Customer be entitled to claim damages, in particular but not be limited, loss of profit and other direct or indirect or consequential damage. This exclusion of liability, however, does not apply to unlawful intent or gross negligence on our part, but does apply to unlawful intent or gross negligence of persons employed or appointed by us to perform any of his obligations.



All warranty claims should firstly be directed to Trelawny SPT Ltd. Please provide, part number, serial number and proof of purchase, either by telephone or E-mail.

Tel: +44 (0)1926 883781

Email : warranty@trelawny.com

GENERAL SAFETY

DO:

- Wear personal protective equipment including safety goggles, footwear, ear defenders and gloves. In some environments it will be necessary to wear facemasks or breathing apparatus.
- Be aware that this equipment can create dust and flying debris.
- Keep hands, feet and clothing away from moving parts.
- Follow the prestart checks detailed in this manual.
- Ensure that the workplace is well ventilated.
- Be aware of others working around you.
- Always follow safe-working practices.
- Inspect the equipment prior to using.
- Store this equipment in a secure and dry environment.

DO NOT:

- Modify this equipment in any way. This will invalidate the warranty and could lead to serious injury.
- Allow the equipment to run unattended.
- Use petrol (gasoline), thinners or any other high flash point solvent to clean the equipment.
- Disassemble or repair unless Trelawny trained.
- Permanently fix the operating lever or button in the on/run position.

BATTERY SAFETY

If the battery pack leaks fluid or smells strangely, IMMEDIATELY move it away from any heat sources or flame. There is a risk of fire or rupturing if the leaked liquid or gas ignites.

The Battery Pack contains combustible organic solvents as an electrolyte solution. If the liquid gets into your eyes, rinse them with plenty of water. After that, IMMEDIATELY seek medical care.

When the Battery Pack is not in use, keep it away from other metal objects, like paper clips, coins, keys, nails, screws or other small metal objects, that can make a connection from one terminal to another. Shorting the battery terminals together may cause burns or a fire.

In case of fire, STOP using the machine immediately and extinguish with dry chemical, sandy soil, carbon dioxide or appropriate foam.

The Battery Pack will deteriorate if it is repeatedly charged and discharged, as well as if it is stored and not used.

As the Battery Pack deteriorates, its full-charge capacity decreases and the length of time it can be used shortens. Once the full-charge capacity is reduced by deterioration, it cannot be recovered and cannot reach the charging capacity of a new Battery Pack.

WORK ON THE BATTERY PACK OR POWER UNIT MUST ONLY BE CARRIED OUT BY QUALIFIED PERSONNEL.

DO:

- Use a genuine battery pack that is intended for this machine.
- Keep the battery pack clean and dry.
- Remove the battery pack from the power unit when carrying or checking it.
- Charge the battery pack in a recommended charging unit.

DO NOT:

- Touch the Battery Pack's connectors with metal objects or insert metal objects through openings into the Battery Pack.
- Allow the battery pack to come into contact with water.
- Allow children to use the Battery Pack. Store the Battery Pack out of the reach of children.
- Store the Battery Pack in a damp location. Doing so can cause a malfunction.
- Expose the battery pack to extreme temperatures (Below 5°C or above 40°C)
- Attempt to service a damaged battery pack.
- Subject the Battery Charger to excessive physical shock, such as by dropping or hitting it.
- Use the Battery Charger to charge anything other than approved Battery Packs. Use only authentic Battery Packs.
- Touch the battery pack terminals with metal. Mishandling them could result in electric shock or fire, which may kill or seriously hurt you. Follow the procedures and instructions provided in the manufacturer's manual.

CHARGER SAFETY

To reduce risk of injury, charge approved rechargeable batteries only. Other types of batteries may burst causing personal injury and damage.

This Battery Charger is not intended for use by children or persons with physical, sensory or mental limitations or a lack of experience or knowledge.

Continued use of the battery charger under unusual conditions could result in fire or electric shock.

DO NOT modify the battery charger. Modifying, disassembling or repairing the battery charger could result in fire or electric shock, which can cause death or serious injury.

Before using the battery charger / charging a battery pack, people who are using an electrical medical device must confirm how their device might be affected. The electromagnetic radiation produced during charging may affect the operation of electronic medical devices, which may kill or seriously hurt you.

If the battery pack leaks fluid or smells strangely, stop using it and contact your servicing agent. Battery pack contains combustible organic solvents as an electrolyte solution. Mistakenly handling them may result in burns or serious injuries.

DO NOT:

- Use the battery charger in locations where the Battery Charger becomes unstable.
- Use the battery charger in locations that are very cold or very hot, such as in direct sunlight or near a heater.
- Use the battery charger in locations exposed to water or excessive humidity.
- Use the battery charger in locations where children or pets might play with it.
- Charge Battery Packs if there is the risk of a lightning storm.
- Charge if the electric outlet is loose.
- Charge if the Battery Charger, AC cable, or the electric outlet is damaged or deformed, dusty, dirty, or rusty.
- Plug too many power cords into one electric outlet.
- Charge while the AC cable is wound up.
- Stand on or place heavy objects on the Battery Charger or AC cable.
- Pull or repeatedly bend the AC cable or charging cable with an excessive force.
- Touch the Battery Charger or AC cable if your hands are wet.
- Splash or submerge the Battery Charger or AC cable in water.
- Leave the AC plug plugged into the electric outlet after you have finished charging.
- Subject the Battery Charger to excessive physical shock, such as by dropping or hitting it.

BATTERY CHARGING

- The battery pack is not supplied fully charged. It is recommended to fully charge before use to ensure that the maximum run time can be achieved.
- Always allow the battery to complete 5 charge cycles (A cycle is defined as 100% - 0% - 100%) to enable the battery to reach its optimum capacity.
- This charger should only be used on a 230v AC 50/60Hz supply with a minimum load current of 10A.
- NOTE: Only charge compatible batteries with the charger.
- Plug the power lead into the charger body.
- Connect the power lead plug into a suitable rated mains power supply socket.
- Place the charger on a flat surface.
- Do not use the charger in any explosive atmospheres and keep away from combustible powders, water sprays or metallic dust or shavings.
- Slide the battery into the slot of the charger ensuring that the battery contacts are aligned with the charging blades.
- Gently push the battery firmly into the charger slot.
- Switch the power outlet on.
- The battery will only charge if the charge level is below 69%.
- The approved charger is a diagnostic charger. The charger LED light will illuminate in specific order to communicate the current battery status. They are as follows:

LED STATUS	BLINKING GREEN	SOLID GREEN	SOLID RED	BLINKING RED
Description	Charging	Fully Charged	Over Temperature*	Charging Fault*

* Refer to the Troubleshooting guide.

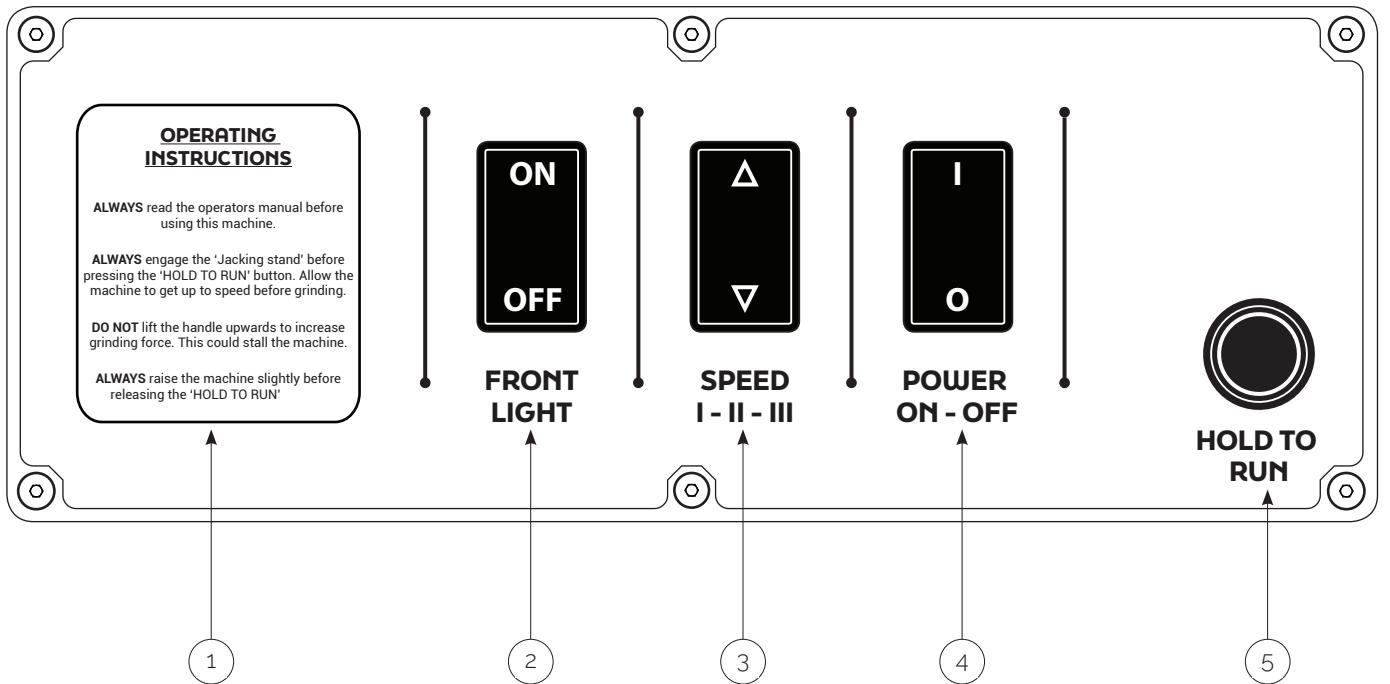
PRE START CHECKS (DAILY)

- Thoroughly inspect the machine for signs of damage.
- Check all bolts and screws for tightness. Ensure that all fittings are secure.
- Check the drive belts for correct tightness. There should normally be approximately 13mm (1/2") of free play when the belt is depressed in the middle position between the two pulleys. To check and set the belt tension, refer to the maintenance section.
- Ensure there is no excessive debris present on the machine.
- Ensure the battery is fully inserted into the power unit.
- Ensure the battery is sufficiently charged.
- Do not use the battery if it shows signs of damage/wear.
- If the battery is leaking fluid, place it in a secure location away from flammable materials and arrange for safe disposal.

STARTING WORK

- Manually remove any nails, studs, pins, rebar etc. from the area before starting work. Attempting to grind with such items in place will damage the disc and/or machine.
- It is recommended that the 'jacking stand' is employed to start the machine. To engage the stand, tilt the machine to lift the grinding head and, whilst tilted, depress the foot pedal (at the rear of the machine, between the wheels), keeping it depressed whilst lowering the machine back towards its normal working position. This action will result in the front of the machine appearing slightly raised. To disengage the stand ready for use, tilt the machine rearwards slightly and the stand will be heard to retract. The grinding head will now be engaged with the working surface.
- The Trelawny TCG250 can be fitted with a range of different grinding tool options for preparation of a range of substrates and surface preparation applications.
- Selecting the correct tooling for the application is critical to achieve the best performance and surface finish. Trelawny offers diamond tooling in two ranges:
- Replaceable 250mm diamond grinding discs are available in 3 bonds (soft, medium and hard) in 10, 16 and 20 segment varieties.
- Quick release (QR) diamond tooling offers a wider range of application solutions. See pages 16 and 17 for further information.

CONTROL PANEL OPERATION



GENERAL INFORMATION

- The TCG250-VM 82v comes with a user friendly control panel featuring a plug and play system for easy maintenance and servicing.
- In the unlikely event of an error with the machine a diagnostic tool can be plugged into the control panel and the error code read.
- Please contact Trelawny SPT Ltd for further information regarding the diagnostic tool. Only authorised service agents can access this service.

OPERATING INSTRUCTIONS (1)

- Please read these instruction before use.
- Further information regarding the jacking stand can be found on page 9 of this manual.
- Further information regarding the machine operation can be found on pages 11 & 12.

FRONT LIGHT (2)

- The powerhead on the TCG250-VM 82v is fitted with a ultra efficient and bright LED light system.
- To turn on the LED light press the switch forward to the ON position.
- To turn off the LED light press the switch backward to the OFF position.
- The LED light will reduce the run time of the machine by approximately 2 minutes per battery cycle.

GRINDING SPEED I - II - III (3)

- The TCG250-VM 82v has 3 grinding speeds to cover a wide range of applications.
- Press the speed switch forward to increase the grinding speed.
- Press the speed switch backwards to reduce the grinding speed.
- Speed 1 - 875 rpm - For heavy coating removal
- Speed 2 - 950 rpm - For tough grinding applications
- Speed 3 - 1025 rpm - For general grinding applications
- **Note:** Faster grinding disc speed does not mean faster grinding. Selecting the correct grinding media is critical in achieving the best result. See pages 16-17 for further information.

POWER ON - OFF (4)

- Press the power switch once and wait for the LED light on the 'Hold to Run' button to light up.
- The switch will return to its original position.
- To turn off, press the power switch once and wait for the LED light on the 'Hold to Run' button to go off.

HOLD TO RUN (5)

- Press and hold the 'Hold to Run' button to engage the motor and grinding disc.
- Release the 'Hold to Run' button to stop the machine.

OPERATION

GENERAL INFORMATION

- Connect a suitable commercial vacuum which has been designed for the collection of concrete dust and possibly toxic paint particles, or for use in the pharmaceutical or food industries, Trelawny can supply special HEPA filtered vacuums which are suitable for these applications. Or if suitable for the area being worked, connect a water hose to the supplied connection at the rear of the machine.
- The machine may oscillate slightly during use, which is normal. Move the machine slowly backwards and forwards, slightly swinging the grinding head right and left; this will ensure that a uniform finish is achieved.

INSERTING THE BATTERY

- Select a compatible battery and check that it is in good operational condition. If the battery shows signs of impact damage, emits any liquid or has an unusual smell or feels hot. **DO NOT USE.**
- Check the charge value by pressing the charge indicator button. If the battery has sufficient charge then proceed to insert the battery into the motor housing.
- Open the battery cover on the power unit.
- Hold the battery with two hands. One hand should grab the battery from the top with the charge display facing upwards, gripping it across the two short sides. The second hand should hold the battery around the middle.
- Slide the base of the battery into its housing using the side rails to locate.
- Remove your hand from the middle keeping hold of the battery from the top and allow the battery to slide fully into the housing.
- Once fully inserted, press down on top of the battery until the battery retaining latch clicks into position and locks the battery in place. Close the battery cover.

CHECKING BATTERY LEVEL

- Push the red battery charge level button on top of the battery whilst it is inserted into the power unit.
- The power level will show up on the digital display in numerical format.

STARTING THE MACHINE

- Ensure the Diamond disc or QR segments are fastened securely.
- Engage the 'jacking stand'. Tilt the machine to lift the grinding head and, whilst tilted, depress the foot pedal (at the rear of the machine, between the wheels), keeping it depressed whilst lowering the machine back towards its normal working position.
- Ensure the front brush shroud is in contact with the surface. This can be adjusted by loosening the 4 x Wing Screws (52) and setting accordingly.
- Connect a suitable commercial dust extractor.
- Press the power switch once and wait for the LED light on the 'Hold to Run' button to light up.
- Press the 'Hold to Run' button to engage the motor and grinding disc.
- Disengage the Jacking stand. Tilt the machine rearwards slightly and the stand will be heard to retract. The grinding head will now be engaged with the working surface.

STOPPING THE MACHINE

- Release the 'Hold to Run' button to stop the machine.
- Press the power switch once and wait for the LED light on the 'Hold to Run' button to go off.
- Engage the 'jacking stand'. Tilt the machine to lift the grinding head and, whilst tilted, depress the foot pedal (at the rear of the machine, between the wheels), keeping it depressed whilst lowering the machine back towards its normal working position.

MACHINE OPERATION

- Complete a small area observing the performance, if necessary change the grade of grinding tools and recheck performance and surface finish.
- Move the machine slowly backwards and forwards, slightly swinging the grinding head right and left; this will ensure that a uniform finish is achieved.
- Let the machine do the work. Do not lift the handle to apply additional pressure to the grinding head.
- DO NOT apply additional weight(s) to the grinding head.
- DO NOT leave the machine running and unattended at any time.
- PPE must be worn at all times.

REMOVING THE BATTERY

- Stop the machine by releasing the 'Hold to Run' button and press the power button once to turn off.
- Open the battery cover.
- Push down on top of the battery and at the same time press and release the battery retaining latch. Remove your hand from the top of the battery and it should rise slightly.
- Grip the top of the battery with one hand across the 2 short faces and lift slowly.
- Once the battery is half way out grip the middle of the battery with the second hand.
- Lift the battery from its housing. Repeat for the 2nd battery.
- If the battery needs to be charged then carefully move it to the battery charger.
- If the battery is to be stored, place the battery in a dry place away from direct sunlight or excessive temperatures. It is recommended to store the battery between +6°C to +40°C.

NOTE: Do not transport the machine with the batteries fitted.

SHUT DOWN

- The Diamond disc or QR segments can become hot during operation. Allow adequate time for these to cool down before cleaning the machine.
- Use the 'jacking Stand' to raise the disc off the ground to prevent any built up heat deforming the rubber coupling if it is left under load whilst hot and stationary. The machine can be stored whilst on its stand.
- Clean off any concrete dust from external components and remove any heavy build up of concrete dust from inside the front dust skirt.
- Take care when using hoses or pressure washers and clean within the dust skirt area only. Do not allow water to be directed at or splashed onto the motor or any electrical components. Once clean and dry, cover the machine to protect it and store the grinder in a dry place.

SERVICING & MAINTENANCE

SAFETY

- Only a competent person, in a suitably equipped workshop, must carry out maintenance.
- **ALWAYS** read and understand the operators manual before carrying out any maintenance.
- Before carrying out any maintenance switch off the motor and remove the battery.
- Use personal protective equipment when carrying out any maintenance or servicing.
- DO NOT use a Pressure Washer on the machine.

GENERAL MAINTENANCE

- After use, clean the machine to remove all build up of dust and surface residues.
- Check the drive elements for build up of deposits and any trapped debris etc. Check the underside for damage. Serious damage could result to the drive shaft, bearings and drive motor if the mechanism is obstructed.

POWERHEAD & BATTERY MAINTENANCE

- If the powerhead suspects an error it will emit a series of beeps. Please count the number of beeps and contact your local Representative. DO NOT open the powerhead casing.
- If you suspect an issue with the powerhead or battery please contact your local Trelawny Representative. DO NOT open the powerhead casing.

BELT REMOVAL

- Remove the top cover by unscrewing the two 8mm bolts either side of the chassis.
- Loosen the engine/motor mounting plate bolts and slide the engine/motor forward.
- Slide the belt off the drive pulley and then remove it from the engine/motor pulley.

BELT INSTALLATION

- Slide the new belt onto the engine/motor pulley first, locating the belt in the pulley's teeth. Then slide onto into the teeth of the drive pulleys.
- Slide the engine/motor backwards until the slack in the belt is taken up, gently nip the four bolts and ensure the slack in the belt is correct.
- If the tension needs adjusting move the motor mounting plate in the desired direction until the correct tension is achieved.
- Tighten all engine/motor mounting plate bolts fully, refit the top cover and tighten the 8mm bolts.

GRINDING TOOL REMOVAL - SAFETY

- Place the machine on a flat and level surface.
- Raise the front skirt by loosening the four 10mm guard retaining bolts on either side of the machine and slide the guard up to the top of the slots, tighten the bolts temporarily.
- Tilt the machine backwards to rest on its handle bar.
- Place a heavy object (10kg sand bag, etc.) across the upper part of the handle bar or tie down for additional security.

GRINDING DISC OR QUICK RELEASE PLATE REPLACEMENT

- Insert a 10mm Allen key into the grinding plates centre spigot.
- Firmly grip the 10mm Allen key to prevent the disc from rotating and remove the 4 x M12 countersunk screws from the disc with a 8mm Allen key. Ensure the disc is supported when removing the last two screws.
- Remove 10mm Allen key. The disc is then free to be removed from the drive plate.
- Offer the new disc or QR Plate up to the drive plate and align the holes using the central locking spigot.
- A sharp tap with a plastic faced hammer will help locate the plate over the O'ring and onto the spigot.
- Loosely fit the 4 x M12 countersunk screws.
- Insert the 10mm Allen key into the centre spigot & grip firmly.
- Tighten the 4 x M12 countersunk screws in a diagonal sequence to 40lb/ft.

QR TOOLING - FITMENT

- the QR tool holding plate features integrated magnets which help locate and secure the QR tools.
- Offer up each tool and firmly slide to locate the bevelled tool edges into each location on the tool holding plate. For added security while fitting give each tool a firm tap with a plastic faced hammer.
- In operation the centrifugal force of the grinding head will keep the QR tools securely in place.
- The QR tool plate can hold a maximum of 6 QR tools. A half set of 3 QR tools can be used to increase grinding pressure for specific applications.
- If using Resin polishing tools a maximum of 3 Velcro polishing tool adaptors (350.5666) can be fitted.

QR TOOLING - REMOVAL

- Firmly hold the QR tool and using a plastic faced hammer give the outside edge of the tool a sharp tap to release the tool from its bevelled retainer on the tool holding plate. Dispose of the used item according to local legislation.

MACHINE STORAGE

Short period storage: up to 3 months

- Remove battery and store in a dry place.
- Clean outside of machine, inspect the moving parts for wear; replace any worn parts as required.
- Remove any build up of material from inside the mechanical area.
- Cover the machine to protect it: Store in a dry place.
- Check security of all fastenings after any lay up period. See also motor manufactures operation and maintenance instruction book.



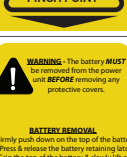
Long period storage: over 3 months

- Remove battery and store in a dry place.
- Clean the outside of the machine, inspect for wear; replace any worn parts as required.
- Remove any build up of material from inside the mechanical area.
- Cover the machine to protect it: Store in a dry place.
- After any long lay up period be sure to check the security of all fastenings.

MAINTENANCE SCHEDULE

MAINTENANCE	EACH USE	30 HRS	70 HRS
Examine the general condition of the machine	√		
Check vacuum port for blockages	√		
Clean external surfaces of the machine	√		
Check all bolts and screws for tightness	√		
Check condition and fitment of grinding media	√		
Check drive belt tension	√		
Examine the battery for any damage	√		
Ensure that the battery is charging properly	√		
Check that the battery release buttons are working correctly and that the battery locks into the product securely	√		
Inspect the battery charger for any damage and ensure it is working correctly.		√	
Perform electrical inspection		√	
Replace front and rear dust seals		√	
Check belt for damage and re-tension		√	
Clean and grease bearings . Replace if necessary			√
Replace belt			√
Strip down and service machine			√

PPE & WARNING SYMBOLS

SYMBOL / WARNING	DESCRIPTION
	ALWAYS Read the manual
	Wear protective glasses
	Wear ear defenders
	Wear protective shoes
	Wear protective gloves
	Wear protective face mask
	DO NOT pressure wash the powerhead
	Caution assisted lift only
	Caution crush point
	Caution pinch point
	Remove battery before servicing machine
	Lift lid carefully

TROUBLE SHOOTING

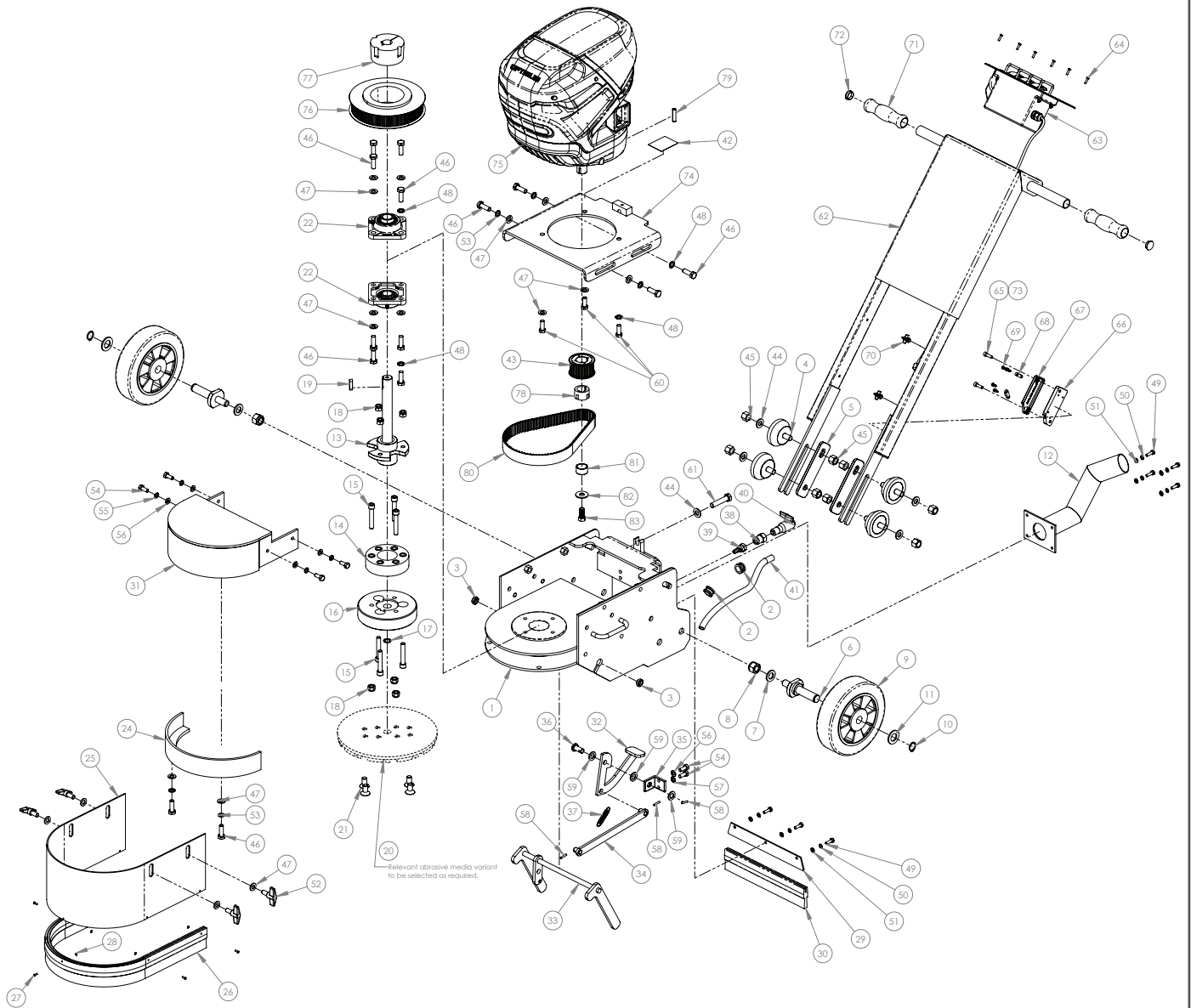
POWER UNIT & OPERATION

FAULT	POSSIBLE CAUSE	ACTION
The Power unit does not start	The battery is not fully inserted	Check the connection between the battery and the battery port. Ensure the battery clicks into place.
	The battery is not charged	Check digital charge status. Charge the battery.
	The on/off switch is faulty	Fault find the switch and replace if necessary.
	Battery may need replacing	Replace the battery.
The machine stops during operation and an alarm can be heard	The motor has been overloaded	Turn off the machine and leave to cool for 3-4 minutes. Restart the machine by pressing the on/off switch.
Motor stops suddenly or does not run correctly	Loose wiring	Check connections in the control panel. Replace switches if required.
	PCB failure	Replace PCB in the control panel
	Too much weight applied on the grinding head	Do not lift the handle during operation. Always apply weight down on the handle
Motor runs but the grinding heads do not move	Drive belt slack or failed	Replace belt or adjust tension
Grinder is slow or erratic	Drive belt slack or failed	Replace belt or adjust tension
	Surface too rough	Use Trelawny TFP200/TFP260 surface Planer to produce a flatter surface or to remove the bulk of the material prior to grinding.
Unexpected noise/rattling.	Motor/drivetrain wear.	Switch off & Isolate power to machine. Carefully inspect motor & free-moving parts.
	Worn or loose fixings/ fasteners.	Switch off & isolate power to machine. Carefully inspect fixings, pivots etc. tighten any loose fasteners.
If the problem has not been cured by any of the above actions, contact your local dealership or agent for assistance.		

BATTERY PACK & CHARGER

FAULT	POSSIBLE CAUSE	ACTION
Charging does not start.	The AC plug is not connected to an electric outlet.	Connect the AC plug to an electric outlet
	The power cable is not connected to the battery unit.	Connect the power cable to the battery unit correctly.
	Charger may be too hot or too cold.	Move the charger and battery pack to a location where the ambient temperature is between +6°C to +40°C.
	Battery level is above 70%	Discharge battery to less than 70% charge.
Charging stops mid cycle	Charger fault	Turn off charger for 60 seconds and restart.
Charging LED illuminates RED during charging.	Battery pack is too hot.	Remove the battery pack from the charger and allow to cool for at least 30 minutes. Re-insert battery pack once cool.
Charging LED flashes RED during charging.	Charging fault.	Remove the battery pack & unplug the charger. Wait 1 minute, plug the charger back in & re-insert the battery pack.
Charging LED still flashes RED during charging.	Faulty battery pack.	Replace battery pack. Dispose of faulty battery pack safely. See local guidance for advice on the safe disposal of Li-Ion batteries.

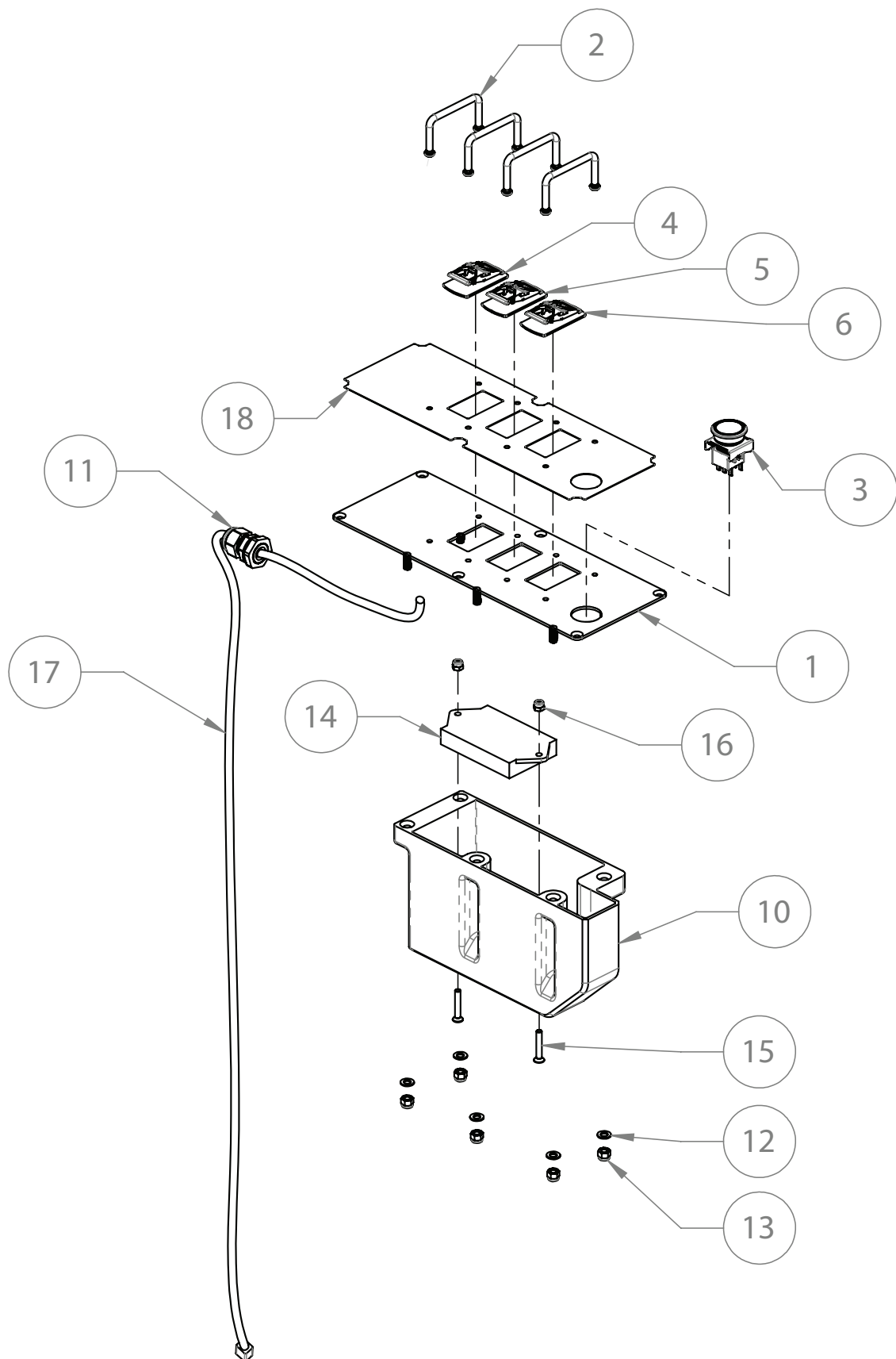
EXPLODED VIEW - MACHINE



PARTS LIST - MACHINE

ITEM	PART NO.	DESCRIPTION	QTY	ITEM	PART NO.	DESCRIPTION	QTY
1	992.0022	Chassis Assembly	1	43	345.9130	Pulley	1
2	843.0808	Water Hose Grommet	2	44	812.0712	Washer	5
3	345.9208	Shaft Stand Bush	2	45	834.0500	Nyloc Nut	8
4	830.2000	Rubber Mounting Pad	4	46	831.1030	Screw	14
5	350.9165	Plate	2	47	812.0710	Washer	17
6	345.9241	Axle	2	48	811.1010	Washer	4
7	812.1016	Washer	2	49	831.0620	Bolt	7
8	824.1600	Nut	2	50	811.0600	Washer	7
9	350.9121	Wheel 200mm	2	51	812.1060	Washer	7
10	814.1020	Circlip	2	52	857.1020	Wing Screw	4
11	812.1001	Washer	2	53	320.9236	Washer	5
12	992.0023	Vaccum Takeoff Assembly	1	54	831.0820	Screw	6
13	345.9235	Drive Shaft Assembly	1	55	811.0800	Washer	4
14	350.9146	Flexible Drive Coupling	1	56	812.1080	Washer	5
15	806.1060	Cap Head Machine Screw	6	57	811.1008	Locking Washer	1
16	350.9143A	Plate Adapter	1	58	813.0420	Pin	3
17	809.3005	Cylinder Stem Reaction Ring	1	59	812.0500	Washer	3
18	824.1000	Nyloc Nut	6	60	875.1095	Hex Head Bolt	3
19	320.9131	Key	1	61	831.1255	Hex Head Bolt	1
20	350.5620B	Grinding Disc	1	62	992.0039	Handle Metalwork Assembly	1
21	350.9141	Screw	4	63	992.0042	Handle Control Panel Assembly	1
22	350.9116	Bearing Assembly	2	64	853.0416	CSK Hex Screw	6
23	N/A	Weight	1	65	806.0620	Cap Head Machine Screw	2
24	3453.2011	Front Section Assembly	1	66	992.1052	Cable Enclosure Inner	1
25	345.9221	Dust Skirt - Front	1	67	992.1053	Cable Enclosure Outer	1
26	731.3150	Brush Seal - Front	0.95	68	875.1460	Cable Clamp	2
27	825.0018	Rivet	5	69	302.5114	Torx Pan Head Screw	4
28	812.0312	Washer	5	70	815.0020	Cable Tie	4
29	345.9222	Dust Skirt - Rear	1	71	822.2000	Rubber Grip	2
30	731.3155	Brush Seal - Rear	1	72	841.4060	End Cap	2
31	992.0025	Belt Guard Assembly	1	73	875.1300	Threadlock - Medium Strength	2
32	345.9201	Foot Pedal Assembly	1	74	992.0038	Motor Mounting Plate Assembly	1
33	345.9207A	Stand Assembly	1	75	875.1478	82V Vertical Shaft Motor	1
34	345.9204	Rod Assembly	1	76	345.9132	Taper Lock Pulley	1
35	345.9202	Mounting Bracket	1	77	345.9126M	Taper Lock Bush	1
36	345.9203	Pin	1	78	345.9129	Taper Lock Bush	1
37	713.5060	Spring	1	79	880.1001	Stepped Parallel Key	1
38	826.0138	Connector	1	80	345.9137	Drive Belt	1
39	819.0138	Connector & Nut	1	81	992.1054	Motor Shaft Pulley Spacer	1
40	828.0138	Valve	1	82	875.1512	Oversize Washer	1
41	719.3000	Hose	0.4	83	855.1716	Hex Head Bolt	1
42	728.6000	Label	1				

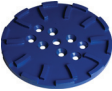

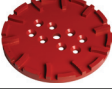
EXPLODED VIEW - CONTROL PANEL



PARTS LIST - CONTROL PANEL

ITEM NO.	PART NO.	DESCRIPTION	QUANTITY
1	992.0043	Control Panel Metalwork	1
2	875.1477	Chassis Handles	4
3	875.1486	Hold to Run Button	1
4	992.9015	Light Switch Assembly	1
5	992.9017	Speed Control Switch Assembly	1
6	992.9016	On/Off Switch Assembly	1
7	875.1482	Item Not Shown	1
8	875.1483	Item Not Shown	1
9	875.1484	Item Not Shown	1
10	992.1047	Electrics Control Cover Box	1
11	861.4004	Cable Gland	1
12	320.9310	Plain Washer	5
13	320.9305	Nyloc Nut	5
14	880.1002	PCB	1
15	875.1487	CSK Screw	2
16	875.1215	Nyloc Nut	2
17	880.1007	Motor Wire Loom	1
18	992.1048	Control Panel Graphics	1
N/A	880.1006	Hold to Run Button Wiring Loom (Item not shown)	1

MEDIA TYPES - GRINDING DISCS

DETAIL	PART NUMBER	DESCRIPTION
	350.5610RA 350.5616RA 350.5620RA	10 Segment Soft Bond Grinding Disc 16 Segment Soft Bond Grinding Disc 20 Segment Soft Bond Grinding Disc
	350.5616B 350.5616B 350.5620B	10 Segment Medium Bond Grinding Disc 16 Segment Medium Bond Grinding Disc 20 Segment Medium Bond Grinding Disc
	350.5610R 350.5616R 350.5620R	10 Segment Hard Bond Grinding Disc 16 Segment Hard Bond Grinding Disc 20 Segment Hard Bond Grinding Disc

MEDIA TYPES - QR GRINDING TOOLS

DETAIL	PART NUMBER	DESCRIPTION
	350.5660	Quick Release Tool Plate
	365.5495R	PCD Removal Diamond Clockwise For removal of coatings, adhesives & Toppings
	365.5500	16 Grit Single Segment - Soft Bond For very course grinding & thin coating removal
	365.5500/2	16 Grit Double Segment - Soft Bond For very course grinding & thin coating removal
	365.5501	30 Grit Single Segment - Soft Bond For hard concrete
	365.5502	30 Grit Single Segment - Medium Bond For medium hardness concrete
	365.5503	30 Grit Single Segment - Hard Bond For soft concrete or very rough concrete
	365.5501/2	30 Grit Double Segment - Soft Bond For hard concrete
	365.5502/2	30 Grit Double Segment - Medium Bond For medium hardness concrete
	365.5503/2	30 Grit Double Segment - Hard Bond For soft concrete or very rough concrete
	365.5504/2	70 Grit Double Segment - Medium Bond For light grinding & scratch removal
	365.5506/2	120 Grit Double Segment - Medium Bond For light grinding & scratch removal

MEDIA TYPES - QR POLISHING TOOLS

DETAIL	PART NUMBER	DESCRIPTION
	350.5660	Quick Release Tool Plate
	350.5666	Polishing Pad Adaptor Plate Used to attached the 'Polishing Tools' to the quick release tool plate
	365.5605	50 Grit Hybrid
	365.5610	100 Grit Hybrid
	356.5620	200 Grit Hybrid
	365.5602A	200 Grit Resin Bond
	365.5604A	400 Grit Resin Bond
	365.5608A	800 Grit Resin Bond
	365.5618A	1500 Grit Resin Bond
	365.5635A	3000 Grit Resin Bond

TECHNICAL SPECIFICATIONS

DETAIL	MODEL	MODEL	MODEL
Part Code	345.2520ND / 345.2528ND	345.2520D / 345.2528D	345.2520QR / 345.2528QR
Description	TCG250 VM 82v No Disc or QR Plate	TCG250 VM 82v c/w Diamond Disc	TCG250 VM 82v c/w QR Tool Plate
Motor Power	2.5kw	2.5kw	2.5kw
Motor Type	Brushless	Brushless	Brushless
Disc Speed	875 - 950 - 1025 rpm	875 - 950 - 1025 rpm	875 - 950 - 1025 rpm
Grinding Width	250 mm	250 mm	250 mm
Length	1100 mm	1100 mm	1100 mm
Width	450 mm	450 mm	450 mm
Height	980 mm	980 mm	980 mm
Weight (inc Batteries)	91 kg	91 kg	91 kg
Noise L _{PA} SPL	71.8 dB (A)	71.8 dB (A)	71.8 dB (A)
Noise L _{WA} SWL	86.04 dB (A)	86.04 dB (A)	86.04 dB (A)
Vibration Level	1.25 m/s ²	1.25 m/s ²	1.25 m/s ²
Trelawny SPT Ltd operates a policy of continuous product development and refinement and therefore reserves the right to change technical specifications and product designs without giving prior notice.			

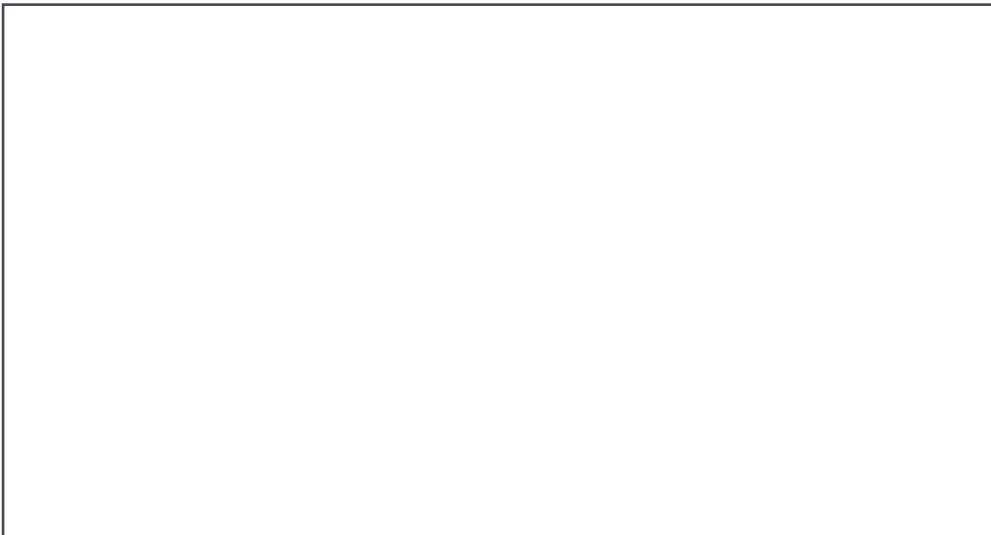
DETAIL	5Ah Battery	8Ah Battery
Battery Type	Li-Ion	Li-Ion
Max Voltage	82v	82v
Nominal Voltage	72v	72v
Energy Rating	360Wh	580Wh
Energy Capacity	5Ah	8Ah
80% Charge Time	28 mins	48 mins
100% Charge Time	39 mins	65 mins
Length	120mm	120mm
Width	90mm	90mm
Height	214mm	240mm
Weight	2.8kg	3.9kg

DETAIL	Battery Charger
Input Voltage	230v
Input Cycle	50/60Hz
Output Voltage	82v
Output Current	8A
Length	230mm
Width	170mm
Height	170mm
Weight	2.0kg

THE PERFECT FINISH
STARTS WITH
TRELAWNY



DEALER STAMP:



CONTACT US

Trelawny SPT Limited

Trelawny House, 13 Highdown Road, Sydenham Industrial Estate,
Leamington Spa, Warwickshire, CV31 1XT, United Kingdom

Telephone: +44 (0)1926 883781

Email: sales@trelawny.com

Website: www.trelawny.com

Manual Part Number:
735.7110 01

