

PPT HANDHELD DECK SCALER

OPERATION & MAINTENANCE MANUAL



CONTENTS

INTRODUCTION	3	EXPLODED VIEW - 2" PPT SHROUD	16
GENERAL INFORMATION	3	EXPLODED VIEW - 4" PPT SHROUD	16
DECLARATION OF CONFORMITY	6	PARTS LIST - 2" PPT SHROUD	17
SAFETY	7	PARTS LIST - 4" PPT SHROUD	17
HAND ARM VIBRATION	7	EXPLODED VIEW - 2" C-FLAP HUB	18
WARRANTY	7	EXPLODED VIEW - 2" STAR CUTTER HUB .	18
PRE START CHECKS (DAILY)	8	EXPLODED VIEW - 2" BEAM CUTTER HUB	18
ELECTRIC POWER SUPPLY	8	PARTS LIST - 2" C-FLAP HUB	19
SUGGESTED LUBRICANTS	8	PARTS LIST - 2" STAR CUTTER HUB	19
MACHINE STORAGE	8	PARTS LIST - 2" BEAM CUTTER HUB	19
CUTTER TYPES & APPLICATIONS	9	EXPLODED VIEW - 4" C-FLAP HUB	20
OPERATION	9	EXPLODED VIEW - 4" STAR CUTTER HUB .	20
CHANGING HUB OR DRUM	10	EXPLODED VIEW - 4" BEAM CUTTER HUB	20
C-FLAP REPLACEMENT	10	PARTS LIST - 4" C-FLAP HUB	21
CUTTER REPLACEMENT	10	PARTS LIST - 4" STAR CUTTER HUB	21
SERVICING	11	PARTS LIST - 4" BEAM CUTTER HUB	21
EXPLODED VIEW - 2" PPT AIR	12	TECHNICAL SPECIFICATIONS	22
EXPLODED VIEW - 4" PPT AIR	12	TROUBLE SHOOTING	23
PARTS LIST - 2" PPT AIR	13	NOTES	23
PARTS LIST - 4" PPT AIR	13	CONTACT US	24
EXPLODED VIEW - 2" PPT ELECTRIC	14		
EXPLODED VIEW - 4" PPT ELECTRIC	14		
PARTS LIST - 2" PPT ELECTRIC	15		
PARTS LIST - 4" PPT ELECTRIC	15		

INTRODUCTION

Thank you for choosing a product by Trelawny SPT Ltd, an innovative leading brand in the Surface Preparation sector.

This product has been manufactured under stringent quality standards to meet superior performance criteria. This manual contains the necessary maintenance information for you to ensure proper operation and care for this equipment.

In the unlikely event that you experience a problem please do not hesitate to contact your local Trelawny dealer or agent. We always welcome feedback and comments from our valued customers.



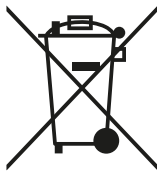
WARNING:

Carefully read through these original instructions before using your new TRELAWNY Equipment. Take special care to read warnings. TRELAWNY products have many features that will make your job faster and easier. Safety, performance, and dependability have been given top priority in the development of this product, making it easy to operate and maintain.



ENVIRONMENTAL PROTECTION:

The equipment, accessories and packaging should be sorted for environmentally friendly recycling. The plastic components are labelled for categorised recycling.



DISPOSAL:

Waste products should not be disposed of with household waste. Please recycle where facilities exist. Check with your local authority or retailer for recycling advice.

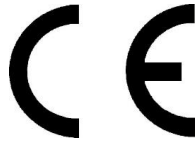
GENERAL INFORMATION

Before operating any TRELAWNY equipment, this manual must be read and understood by the operator, if in any doubt ask your supervisor before using this equipment. Failure to follow these instructions could result in damage to the equipment and/or personal injury.

Trelawny SPT Ltd disclaims all responsibility for damage to persons or objects arising as a consequence of incorrect handling of the equipment, failure to inspect the equipment

prior to starting work for damage or other faults that may influence the operation of safe working of the equipment, or failure to follow the safety regulations listed or applicable to the job site.

Operators should be familiar with the data given in the specification section. Please keep these instructions in a safe and accessible place.



EU Declaration of Conformity

We, Trelawny SPT Ltd of 13 Highdown Road, Sydenham Industrial Estate, Leamington Spa, Warwickshire, CV31 1XT, GB declare that the DoC is issued under our sole responsibility and belongs to the following product:

PART NUMBER

DESCRIPTION

SERIAL NUMBER

YEAR OF CONSTRUCTION

The object of the declaration described above is in conformity with the relevant **Union Harmonisation Legislation:**

- 2006/42/EC Machinery Directive
- 2014/30/EU EMC Directive
- 2014/35/EU Low Voltage Directive
- 2011/65/EU Restriction of Hazardous Substances Directive

The following harmonised standards and technical specifications have been applied:

- EN ISO 12100:2010 Safety of machinery
- EN 60204-1:2018 Safety of machinery. Electrical equipment of machines - General requirements
- EN ISO 4871:2009 Acoustics. Declaration and verification of noise emission values of machinery and equipment

Technical files are held by Indutrade Benelux BV, Anton Philipsweg 1, 1422 AL Uithoorn, Netherlands

Notified Body:
Not Applicable. Machinery is not listed under ANNEX IV of the Machinery Directive.

Place of Declaration:
Trelawny SPT Ltd, 13 Highdown Road, Sydenham Industrial Estate, Leamington Spa, Warwickshire, CV31 1XT, GB

Date of Declaration:
December 2024

Signed by:

Daniel Rowledge
Managing Director



UKCA Declaration of Conformity

We, **Trelawny SPT Ltd of 13 Highdown Road, Sydenham Industrial Estate, Leamington Spa, Warwickshire, CV31 1XT, GB** declare that the DoC is issued under our sole responsibility and belongs to the following product:

PART NUMBER

DESCRIPTION

SERIAL NUMBER

YEAR OF CONSTRUCTION

The object of the declaration described above is in conformity with the relevant **Statutory Requirements**:

- **2008 No. 1597** Supply of Machinery (Safety) Regulations 2008
- **2016 No. 1091** Electromagnetic Compatibility Regulations 2016
- **2016 No. 1101** The Electrical Equipment (Safety) Regulations 2016
- **2012 No. 3032** The Restriction of the Use of Certain Hazardous Substances in Electrical and Electronic Equipment Regulations 2012

The following designated standards and technical specifications have been applied:

- **BS EN ISO 12100:2010** Safety of machinery
- **BS EN 60204-1:2018** Safety of machinery. Electrical equipment of machines - General requirements
- **BS EN ISO 4871:2009** Acoustics. Declaration and verification of noise emission values of machinery and equipment

Technical files are held by **Daniel Rowledge** at the Trelawny address stated above.

Approved Body:

Not Applicable. Machinery is not listed under ANNEX IV of the Supply of Machinery (Safety) Regulations 2008

Place of Declaration:

Trelawny SPT Ltd, 13 Highdown Road, Sydenham Industrial Estate, Leamington Spa, Warwickshire, CV31 1XT, GB

Date of Declaration:

December 2024

Signed by:

Daniel Rowledge
Managing Director

DECLARATION OF CONFORMITY

<p>CZ Prohlášení o přizpůsobení My, společnost Trelawny SPT Limited podávamej daňové přiznání, že výrobek a dodávka výrobku název výrobku Model, výrobní číslo Rok výroby Pro které se průkaz týkající, je přizpůsobení s zásobou od následující příkazov a jejich pohotovostní: 2006/42/EC Příkaz soustrojí 2014/35/EC Příkaz nízkého napětí (upotřebitelné jedině do výrobku použít elektrické energie)</p>	<p>LT ATITIKTIES DEKLARACIJA Mes, Trelawny SPT Limited Prisiidami visą atsakomybę deklaruojame, kad tiekiamas / gaminamas produktas Produkto pavadinimas Modelis, serijos numeris Pagaminimo Kuriam laikoma ši deklaracija, atitinka šių direktyvų, norminių aktų ir su jais susijusių, standartų reikalavimus: 2006/42/EC Įrangos direktyva 2014/35/EC Žemos įtampos direktyva (laikoma tik elektriniams įrengimams)</p>
<p>DE Übereinstimmungserklärung Wir, Trelawny SPT Limited erklären, dass unter unserer alleinigen Verantwortung für die Lieferung und Herstellung des Produktes Name des Produktes Model, Seriennummer Jahr der Herstellung auf welches sich dieses Dokument bezieht, stimmt mit den Vorgaben der folgenden Direktive, normativen Dokumente und deren jeweiligen Maßstäbe ein: 2006/42/EC Maschineriedirektive 2014/35/EC Niederspannungsrichtlinie (nur zutreffend auf Produkte, die Strom benutzen)</p>	<p>MT DIKJARAZZJONI TA KONFORMITÀ Ahna, Trelawny SPT Limited Niddikjaraw li ahna responsabbli kompletament għal provista / manifattura tal-prodott hawn 1msemmi: Isem Il-Prodott Mudell, Serial number Sena li 'produzzjoni Dan id-dokument magħmul għal prodott imsemmi hawn fuq, li huwa skond il-provizjonijiet imsemmija fid-dokumenti tal-klassi tax-xogħol: 2006/42/EC Machinery Directive 2014/35/EC Low Voltage Directive (tapplika biss għal prodotti li jahdmu bi-elekttriku)</p>
<p>DK Erklæring om overensstemmelse Vi, Trelawny SPT Limited Erklærer hermed at under vores ene forhandling ansvar for vores forhandling/produktion af produktet Produkt navn Model, serie nummer Produktionsår For hvilket dette dokument referer, at der er overensstemmelse med bestemmelser af følgende direktiver, normative dokumenter og deres relevante standard: 2006/42/EC Machinery directive 2014/35/EC Low voltage directive</p>	<p>NL EENVORMIGHEIDSVERKLARING Wij, Trelawny SPT Limited Verklaaren dat wij de volledige verantwoordelijkheid dragen voor het leveren/fabriceren van het volgende product: Naam van het product Type, Serienummer Productiejaar En verklaaren dat het product waarnaar dit document verwijst eenvoudig is met de voorzieningen van de volgende Richtlijn(en), Normatieve Documenten en hun relevante Standaarden: 2006/42/EC MACHINERIECHTLIJN 2014/35/EC LAAGSPANNINGSRICHTLIJN (uitsluitend van toepassing bij producten die elektrische stroom gebruiken)</p>
<p>EE TOOTE VASTAVUSE DEKLARATSIOON Meie, Trelawny SPT Limited Deklareerime, et vastutame järgmise varustuse/toote müügi eest Toote nimetus Mudel, Seeria number Aegsita tootmisajaku Arvutud dokument käsitleb toote vastavust järgmistele direktiivide/lele, normatiividele ja nendega samaväärsetele standardidele: 2006/42/EC MASINA DIREKTIIVID 2014/35/EC MADALPINGE DIREKTIIVID (Kohandatakse vaid toodetele, mis kasutavad elektrivoolu)</p>	<p>PL Deklaracja Zgodności My, Firma Trelawny SPT Limited. oświadczamy w naszej odpowiedzialności, że produkcja i dostawa urzadzzenia Nazwa produktu Model, numer seryjny Rok produkcji do którego ten dokument należy, jest zgodne z klauzulami następujących zarządzeń i ich istotnych standardów: 2006/42/EC Zarządzenie mechaniczne 2014/35/EC Zarządzenie niskiego napięcia elektrycznego (Zastosowanie tylko przy urządzeniach elektrycznych)</p>
<p>ES Declaración de Conformidad Nosotros, Trelawny SPT Limited Declaramos que bajo nuestra completa responsabilidad de la fabricación/suministro del producto Nombre del Producto Modelo, No de Serie Año de producción A quien este documento se refiere, está de acuerdo con lo relacionado en la Directriz, Normativa Documentada y sus relevantes standards: 2006/42/EC Directorio de Maquinaria 2014/35/EC Directorio de Bajo Voltaje (Aplicable solamente a productos que funcionen con electricidad)</p>	<p>PT DECLARAÇÃO DE CONFORMIDADE CE A empresa TRELAWNY SPT LIMITED Declara, sob sua inteira responsabilidade, que o fornecimento/fabrico do seguinte produto: Designação do produto Modelo, Número de Série Ano de produção a que esta declaração se refere, está em conformidade com o preceituado nas Directivas e Normas Comunitárias abaixo indicadas: 2006/42/EC DIRECTIVA DE MÁQUINAS 2014/35/EC DIRECTIVA DE BAIXA VOLTAGEM (Aplicável apenas a produtos que utilizam energia eléctrica)</p>
<p>FI ILMOITUSVAHVISTUS Me, Trelawny SPT Limited Valmistamme tuotteen toimittamisesta/valmistamisesta Tuotteen nimi Malli, sarjanumero Valmistusvuosi Täällä todistuksella vahvistamme säädökset seuravien ohje/ohjesien, Yleisin papereihin ja niihin liittyvät vaatimukset: 2006/42/EC KONEISTON OHJEET 2014/35/EC PIENJÄNNITTE OHJEET (tarvitaan ainoastaan tuotteille jotka käyttävät sähkövoimaa)</p>	<p>RU СВИДЕТЕЛЬСТВО О СООТВЕТСТВИИ Мы, Trelawny SPT Limited Заявляем, что несем полную ответственность за поставку/производство нижеуказанной продукции Наименование изделия Модель, серийный номер Год выпуска на которую выдано настоящее Свидетельство, и которая соответствует положениям следующей(их) директиве(ы), нормативным документам и относящимся к ним стандартам: 2006/42/EC ДИРЕКТИВА ПО МЕХАНИЗМАМ 2014/35/EC ДИРЕКТИВА ПО НИЗКОВОЛЬТНОМУ ОБОРУДОВАНИЮ (распространяется только на изделия с электропитанием)</p>
<p>FR DÉCLARATION DE CONFORMITÉ Nous, soussignés Trelawny SPT Limited déclarons que le produit sous-nommé Nom du produit Modèle et Numéro de Série Année de production et pour lequel nous prenons entière responsabilité pour sa fourniture et manufacture, est conforme aux clauses des directives suivantes documents normatifs et normes qui s'y appliquent: 2006/42/EC DIRECTIVE POUR LA MACHINERIE 2014/35/EC DIRECTIVE POUR BAS VOLTAGE (n'est applicable qu'aux produits utilisant l'énergie électrique)</p>	<p>SE FÖRSÄKRAN OM ÖVERENSSTÄMMELSE VI, TRELAWNY SPT LIMITED FÖRKLARAR ATT VI MED ENSAMT ANSVAR ANSKAFFAT / TILLVERKAT PRODUKTEN PRODUKTNAMN MODELL och SERIE NUMMER Tillverkningsår TILL VILKEN DETTA DOKUMENT HÄNVISAR ÄR I ÖVERENSSTÄMMELSE MED FÖLJANDE DIREKTIV, NORMATIVA DOKUMENT OCH DERAS RELEVANTA STANDARDER 2006/42/EC MASKINDIREKTIV 2014/35/EC LÅGSTRÖMSDIREKTIV (TILLÄMPLIG PÅ ELEKTRISK DRIVNA PRODUKTER)</p>
<p>GR ΔΗΛΩΣΗ ΠΙΣΤΟΤΗΤΑΣ Η εταιρεία Trelawny Spt Limited Δηλώνει ότι έχει τη μοναδική ευθύνη ως κατασκευαστρια / προμηθευτρια του παρακάτω προϊόντος περιγραφη προϊόντος μοντέλο, αριθμός σειράς έτος παραγωγής και στο οποίο αναφέρεται αυτή η δήλωση, είναι συμβατό με τις προδιαγραφές που ορίζονται στις ακόλουθες Κοινοτικές Οδηγίες Ελεγκτικές Διατάξεις κι άλλες σχετικές προδιαγραφές 2006/42/EC ΟΔΗΓΙΑ ΠΕΡΙ ΜΗΧΑΝΗΜΑΤΩΝ 2014/35/EC ΟΔΗΓΙΑ ΠΕΡΙ ΧΑΜΗΛΗΣ ΤΑΣΗΣ (αφορά μόνον προϊόντα που λειτουργούν με ηλεκτρικό ρεύμα)</p>	<p>SI IZJAVA O SKLADNOSTI Trelawny SPT Limited pod polno odgovornostjo izjavljamo, da so spodaj navedeni proizvodi, ki jih dobavljamo/producirajamo: Ime proizvoda Model, serijska številka Leto proizvodnje na katere se ta dokument nanaša, proizvedeni v skladu z določili naslednjih direktiv, normativnih dokumentov in njihovih relevant- nih standardov: 2006/42/EC DIREKTIVA O STROJIH 2014/35/EC DIREKTIVA O STROJIH Z NIZKO VOLTAŽO (nanaša se samo na proizvode na električni pogon)</p>
<p>HU MEGFELELŐSÉGI NYILATKOZAT Mi, A "Trelawny SPT Limited" cég Felelősségünk tudatában kijelentjük, hogy mint a termék szállítója/gyártója Termék neve Típus, Sorozatszám Gyártási év amelyre jelen dokumentum vonatkozik, megfelel az alábbi Irányelv(ek), Irányadó Dokumentumok előírásainak, és az azokat meghatározó szabványoknak: 2006/42/EC GÉPÉSZETI IRÁNYELVEK 2014/35/EC KISFESZÜLTÉSŰ IRÁNYELVEK (Csak az elektromos meghajtású gépeknél)</p>	<p>TR UYGUNLUK BEYANI Trelawny SPT Limited Aşağıdaki, üretim ve tedarikinden tek başına sorumlu olduđu ürünün Ürün adı Model/Seri no Üretim yılı bu belgeğin ilgili olduđu apaşğıdaki yönetmeliklerin, norm belgelelerinin ve ilgili standartları'nın koşullarına uygun olduđunu beyan eder: 2006/42/EC MAKÝNALAR YÖNETMELÝĐÝ 2014/35/EC DÜĐUK GERÝLÝM YÖNETMELÝĐÝ (Yalnızca elektrikle çalıřan ürünlerde geçerlidir)</p>
<p>IT DICHIARAZIONE DI CONFORMITÀ La Società Trelawny SPT Limited Dichiaro, sotto la propria responsabilità, che la fornitura / produzione del prodotto Nome prodotto Modello, codice Anno di produzione a cui si riferisce tale documento è conforme alle seguenti Direttive, ai documenti della Normativa ed ai relativi standard: 2006/42/EC DIRETTIVA SULLE APPARECCHIATURE 2014/35/EC DIRETTIVA SUL BASSO VOLTAGGIO (applicabile esclusivamente per i prodotti che utilizzano energia elettrica)</p>	

SAFETY

DO:

- Wear personal protective equipment including safety goggles, footwear, ear defenders and gloves. In some environments it will be necessary to wear facemasks or breathing apparatus.
- Be aware that this equipment can create dust and flying debris.
- Keep hands, feet and clothing away from moving parts.
- Follow the prestart checks detailed in this manual.
- Ensure that the workplace is well ventilated.
- Be aware of others working around you.
- Always follow safe-working practices.
- Inspect the equipment prior to using.
- Store this equipment in a secure and dry environment.

DO NOT:

- Modify this equipment in any way. This will invalidate the warranty and could lead to serious injury.
- Allow the equipment to run unattended.
- Use petrol (gasoline), thinners or any other high flash point solvent to clean the equipment.
- Disassemble or repair unless Trelawny trained.
- Permanently fix the operating lever or button in the on/run position.

HAND ARM VIBRATION

Trelawny Equipment may cause hand-arm Vibration Syndrome injury if their use is not adequately managed.

We advise you to carry out a risk assessment and to implement measures such as; limiting exposure time [i.e. actual trigger time, not total time at work], job rotation, ensuring the tools are used correctly, ensuring the tools are maintained according to our recommendations, and ensuring that the operators wear personal protective equipment (PPE) particularly gloves and clothing to keep them warm and dry.

Employers should consider setting up a programme of health surveillance to establish a benchmark for each operator and to detect early symptoms of vibration injury.

We are not aware of any PPE that provides protection against vibration injury by attenuating vibration emissions.

See 'Specifications' section for vibration emission data.

Further advice is available from our Technical Department.

We strongly advise you to visit the Health & Safety Executive website <http://www.hse.gov.uk/vibration> - this site provides excellent advice and information on HAV and currently, includes a Hand-Arm Vibration Exposure Calculator that is easy to use to work out the daily vibration exposure for each of your operators.

WARRANTY

When you choose TRELAWNY, you're investing in a product engineered for strength, durability, and unwavering reliability. Our equipment is built to endure the toughest challenges, showcasing nearly 80 years of craftsmanship in Surface Preparation Technology. We take pride in being the industry benchmark, offering not just a tool but a lasting companion for tough jobs, backed by a 12-month warranty for peace of mind.

Register your TRELAWNY product within 30 days of purchase by scanning the QR code to activate your warranty and enjoy the full support from our team.

PLEASE RETAIN YOUR PROOF OF PURCHASE, AS IT WILL BE REQUIRED TO PROCESS ANY WARRANTY CLAIMS.

The following are not covered under the Trelawny warranty:

- Damage caused by abuse, misuse, dropping or other similar damage caused by or as a result of failure to follow assembly, operation or user maintenance instructions.
- Alterations, additions or repairs carried out by persons other than Trelawny or their recognised agents.

- Transportation costs to and from Trelawny or their recognised agents, for repair or assessment against a warranty claim, on any equipment.
- Materials and/or labour costs to renew, repair or replace components due to fair wear and tear.

In no case whatsoever shall the Customer be entitled to claim damages, in particular but not be limited, loss of profit and other direct or indirect or consequential damage. This exclusion of liability, however, does not apply to unlawful intent or gross negligence on our part, but does apply to unlawful intent or gross negligence of persons employed or appointed by us to perform any of his obligations.



All warranty claims should firstly be directed to Trelawny SPT Ltd. Please provide, part number, serial number and proof of purchase, either by telephone or E-mail.

Tel: +44 (0)1926 883781

Email : warranty@trelawny.com

PRE START CHECKS (DAILY)

PNEUMATIC PRODUCTS

- The compressed air must be free from water and dirt. Always clear the air hose before connecting to the tool.
- Ensure that no moisture (condensation) is present in the air hose.
- Ensure air hose and all couplings are secure, leak free and in good condition.
- Limit the length of air hose to 30M (100ft). Where extra length is necessary, for each additional 15M (50ft) of air hose used, the pressure drop is approximately 0.21bar (3psi).
- For safe and efficient operation, the correct operating pressure is 6.2bar (90 psi).
- Do not let the operating pressure fall below 5.5bar (80psi) or rise above 6.9bar (100 psi).
- In particularly cold weather it is recommended that a proprietary anti-freeze lubricating oil is used.

ELECTRIC PRODUCTS

- Check that the power supply on site is suitable for the equipment.
- Ensure all extension cables are fully uncoiled and never left wrapped around cable reels or tied in loops.
- Check all cable connections are secure and not damaged.
- Read the 'Power supply' section for specific cable and power configurations.

GENERIC CHECKS

- Check all bolts and screws for tightness. Ensure all fittings are secure.
- Check condition of the cutter drum assembly and replace components as required.

ELECTRIC POWER SUPPLY

110v MODELS

Use a centre tap transformer with a continuous rated output of 3.0KVA. Do not add an extension lead to the transformer input. The motor requires the minimum of a 16amp, 110v power supply.

To avoid Voltage drop Trelawny recommends a maximum cable length of 30m with a core wire size of 2.5mm² cross sectional area.

230v MODELS

Take particular care when using 230v Machines, ensure that the electrical supply is earthed and that breakers and fuses are correct for the loading. The 230v motor requires the minimum of a 13amp, 220v power supply.

To avoid Voltage drop Trelawny recommends a maximum cable length of 30m with a core wire size of 2.5mm² cross sectional area.

SUGGESTED LUBRICANTS

Oil the tool daily before use. Put a few drops of one of the following zinc free air tool lubricants through the air inlet:

SHELL S22 or R10, CASTROL Hyspin ZZ32

It is recommended that an inline lubricator be installed in the air hose adjacent to the tool.

Cleaning

If operation becomes unproductive and the piston shows signs of sticking, dismantle and clean with a highly refined paraffin.

Immediately after cleaning, thoroughly oil the tool with one of the recommended lubricants.

MACHINE STORAGE

Short period storage: up to 3 months

Clean outside of the equipment and inspect the consumable items for wear, replace any worn parts as required. Insert a liberal quantity of air tool through the air inlet and run briefly to ensure that the internal components are coated with oil. Cover and store the equipment in a dry location.

Long period storage: over 3 months

Follow instructions set out in 'short period storage'. Additionally lubricate any exposed moving parts with one of the suggested lubricants. Repeat this process every 3 months.

CUTTER TYPES & APPLICATIONS

C-FLAPS

Heavy duty (Type C) flaps fitted with tungsten carbide inserts. For the removal of general paint and rust, leaving a SA2.5 profile on most steel work.

(It may be necessary to use more than one type of cleaning device to achieve a near SA2.5 finish).

STAR CUTTERS

Heat-treated steel cutters used for the aggressive removal of paint and coatings and heavy rust from steel work, but with a shorter life span than Beam Cutters. Produces some marking on steelwork.

BEAM CUTTERS

Heat-treated steel cutters used for the removal of paint and coatings from steel work, not as aggressive as Star Cutters. Produces slight marks on steelwork.

OPERATION

WITH C-FLAPS FITTED

- Ensure the shroud has been set with the retaining screws in the upper part of the slot position for flaps.
- To start the electric or air motor fitted with C-flaps, ensure that both rollers are in constant contact with the surface being prepared, on electric motors depress the switch fully, and start to move the machine slowly over the work surface.
- The switch can be locked in the on position. (electric models)
- Pneumatic versions are fitted with a safety lever. Slide the outer lever down and depress the main lever towards the body and slowly start to move the machine over the work surface.
- PNEUMATIC TOOLS MUST BE USED WITH A SUITABLE AIRLINE LUBRICATOR, WITHIN 3 METRES OF THE MACHINE.
- The machine can be used in a backwards and forwards movement if required, each pass should be overlapped to produce a uniform finish.
- It is important to keep both rollers in contact with the surface at all times, these control the correct strike height of the C-Flaps.
- Do not allow the tool to run over any protrusions (Bolts, rivets or weld seams etc.) or over the edge of the work surface, this will tear the flaps or damage the tungsten carbide tips and can create a dangerous working condition.
- The resulting damage to the flaps or machine will not be covered under warranty.
- Complete a small area observing the performance.
- To stop the machine simply press the rear of the switch if locked in position on electric motors or release the lever on air motors.

WITH CUTTERS FITTED

- Ensure the shroud has been set with the retaining screws in the lower part of the slot position for Star or Beam cutters.
- To start the electric or air motor fitted with Star or Beam cutters ensure that only the rear roller is in contact with the surface being prepared and that the cutters are not in contact with the surface.
- The switch can be locked in the on position. (electric models)
- Pneumatic versions are fitted with a safety lever. Slide the outer lever down and depress the main lever towards the body.
- Once up to speed slowly start to lower the cutter drum until contact is made with the surface.
- PNEUMATIC TOOLS MUST BE USED WITH A SUITABLE AIRLINE LUBRICATOR, WITHIN 3 METRES OF THE MACHINE
- The machine can be used in a backwards and forwards movement if required, each pass should be overlapped to produce a uniform finish.
- Apply only sufficient pressure to prevent the tool from bouncing.
- Ensure only the rear roller is in contact with the surface when using Star or Beam cutters.
- Complete a small area observing the performance.
- To stop the machine simply press the rear of the switch if locked in position on electric motors or release the lever on air motors.

CHANGING HUB OR DRUM

Turn off and stop the Peening Prep Tool (PPT), making sure the cutter drum has come to a complete stand still.

Whether electric or air powered, disconnect the machine from its power source.

Remove the M8 bolt from the side plate using a 13mm spanner and slide the plate from the PPT housing.

AIR MOTOR

Insert the supplied spanner between the air motor and Rotopeen hub or drum and locate onto the spindles spanner flats to lock it.

For Rotopeen hubs, insert a ¼"AF Allen key into the end of the hub and unscrew in an anti-clockwise direction.

If fitted with a drum, a suitable bar inserted between the cutters and turned in an anti-clockwise direction should break the bond. If it has been in situ for some time it may require a light tap on the cutters from a soft face hammer to release the drum.

ELECTRIC MOTOR

On the back of the electric motor is a small button, depress this lightly and slowly rotate the hub or drum until it engages and locks, then hold in.

For Rotopeen hubs, insert a ¼"AF Allen key into the end of the hub and unscrew in an anticlockwise direction.

While the hub is removed, check that the vacuum port is free from blockages and that the sealing strip at the base of the vacuum port is in good condition. Replace any damaged, worn or suspect parts.

Ensure that all the bolts are tight at all times, recheck at regular intervals.

Refitting the hub requires no more than screwing on to the spindle and nipping against the flange, the hub or drum will tighten sufficiently in normal use.

C-FLAP REPLACEMENT

With the hub assembly removed from the drive spindle, slide the pins and flap assembly from the six slots.

The retaining pins have two different length shoulders, these have been designed to stagger the flaps, so that alternate flaps are 6mm offset to one another to provide a smooth overlap.

The flaps have writing on one side, these need to be fitted with the writing facing the direction of rotation, (anticlockwise as you look at the end of the spindle).

Insert a flap with the retaining pin with a long shoulder fitted in the flap, into a slot from the threaded hole side of the hub.

Important: Check that the Rotopeen shroud has been set with the retaining screws in the higher slot position for flaps use and in the lower position for drum use.

The strap may need to be pinched together with the fingers close to the pin in order for the assembly to slide into the slot.

Fit the next flap and pin with a short shoulder into the next slot ensuring that the flaps are staggered.

Once the hub has been filled with alternating flaps check that all pins are fully located

CUTTER REPLACEMENT

With the drum removed from the drive spindle, using two 11mm spanners, remove the two bolts and nyloc nuts retaining the end plate on the drum.

At the opposite end of the drum there are four small holes, a pin or punch can be inserted in to the hole to push the cutter axle out of the drum.

Inspect the cutter axle for any wear and if any grooving has taken place or the ends of the axles have reduced in diameter, replace, all axles.

Check the drum cutter axle location holes for wear.

If a new cutter axle is loose in the location holes or if the holes appear to be elongated, replace the drum and fit new cutter axles.

To replace the cutters stand the drum without the cutter axles in situ, and with the threaded hole to the top.

Make a stack of star or beam cutters, and slide into the drum, secure with a cutter axle.

Repeat with the other three axles. Replace the end plate and using two 11mm spanners, secure using new bolts and nyloc nuts.

Refitting the hub or drum requires no more than screwing on to the spindle and nipping against the flange, the hub or drum will tighten sufficiently in normal use.

SERVICING

Turn off and stop the Peening Prep Tool (PPT), making sure the cutter drum has come to a complete stand still.

Whether electric or air powered, disconnect the machine from its power source.

ELECTRIC MOTOR

Trelawny SPT Ltd or an authorised customer service centre may only carry out warranty repairs.

The PPT electric motor features cut-off carbon brushes. When the wear limit of the carbon brushes has been reached, the electric motor will stop automatically.

When the PPT is in use the carbon brushes may be seen sparking through the rear ventilation slots.

Regularly blow out the housing interior through the ventilation slots with dry, low-pressured (2 bar/30 psi) compressed air.

If excessive sparking from the brushes occurs, switch off the electric motor immediately and take it to an authorised customer service centre.

Note: If the PPT has been used with the trigger locked off and a power cut occurs, the tool will not start again until the locked button has been released.

AIR MOTOR

A Stripping and Assembly tool kit (Part Number 312.A529) is available for the air motor which includes the stripping and assembly instructions.

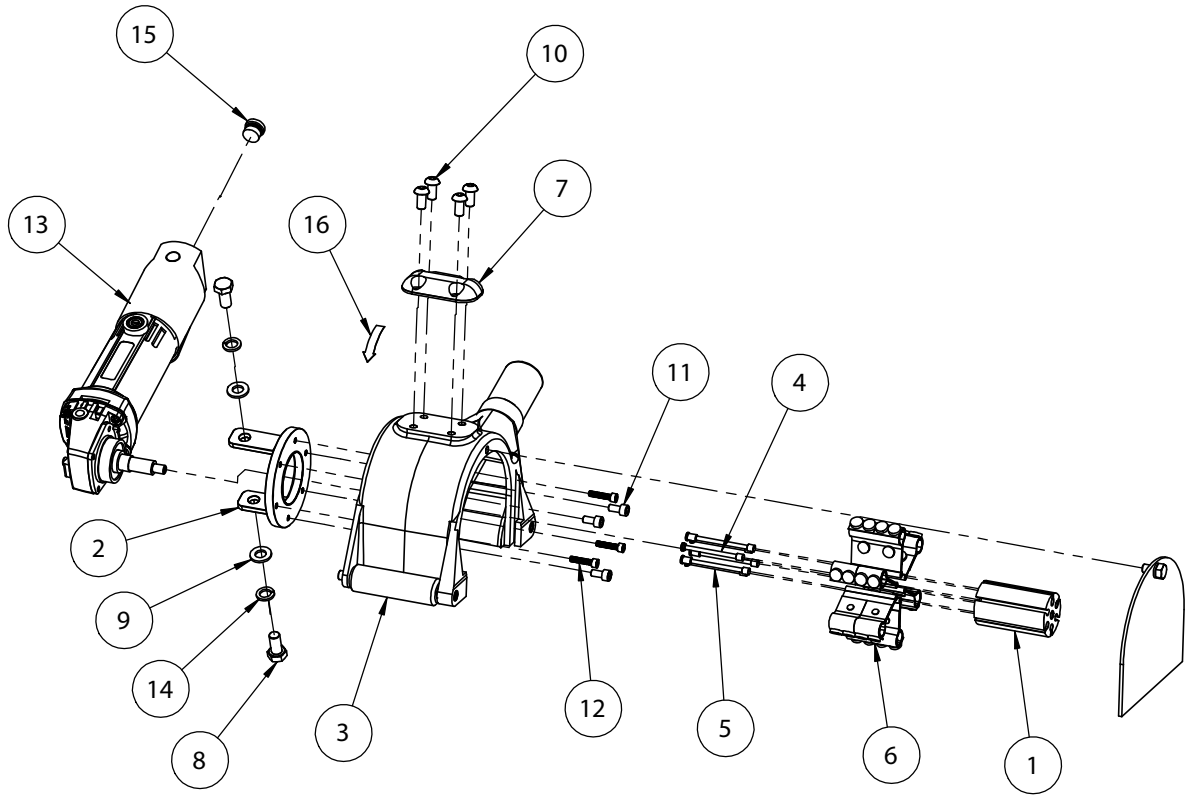
A suitable revolution counter may also be required to check the spindle speed once repairs have been completed.

A competent person should only carry out maintenance, in a suitably equipped workshop.

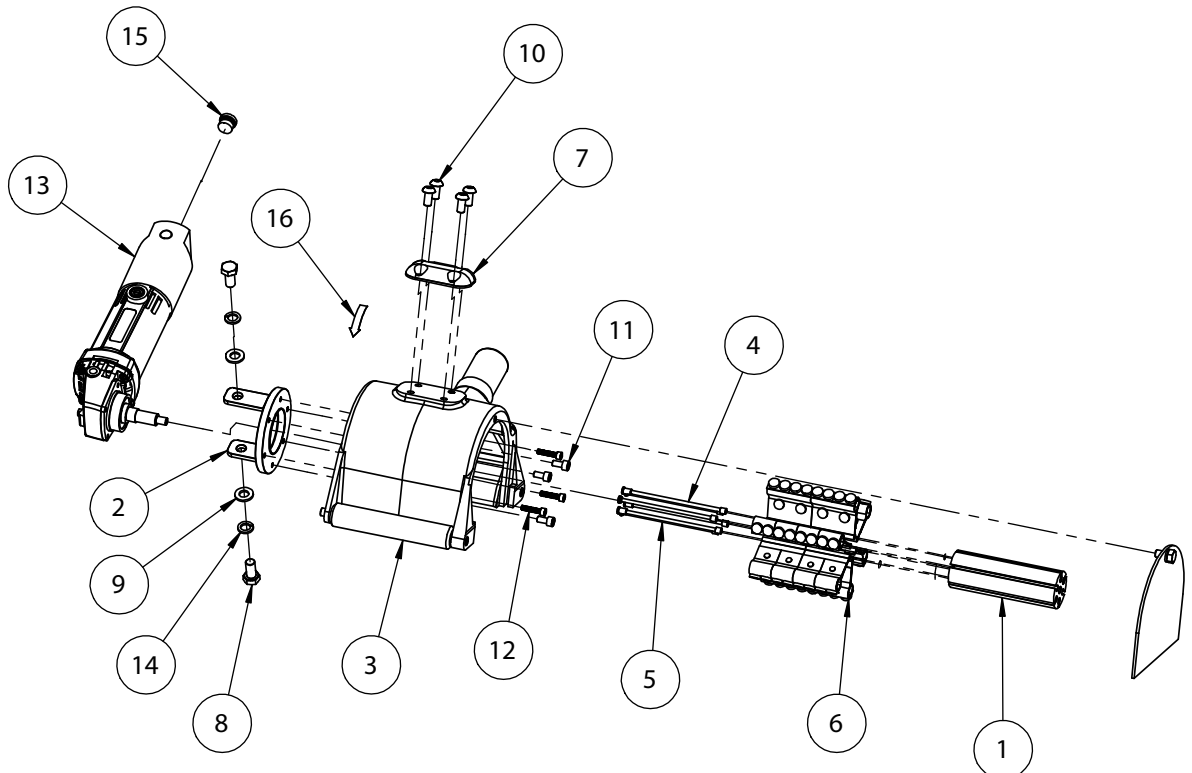
Airline Lubricator:

The air supply filter/lubricator/regulator unit should be checked regularly and the lubricant replaced if required.

EXPLODED VIEW - 2" PPT AIR



EXPLODED VIEW - 4" PPT AIR



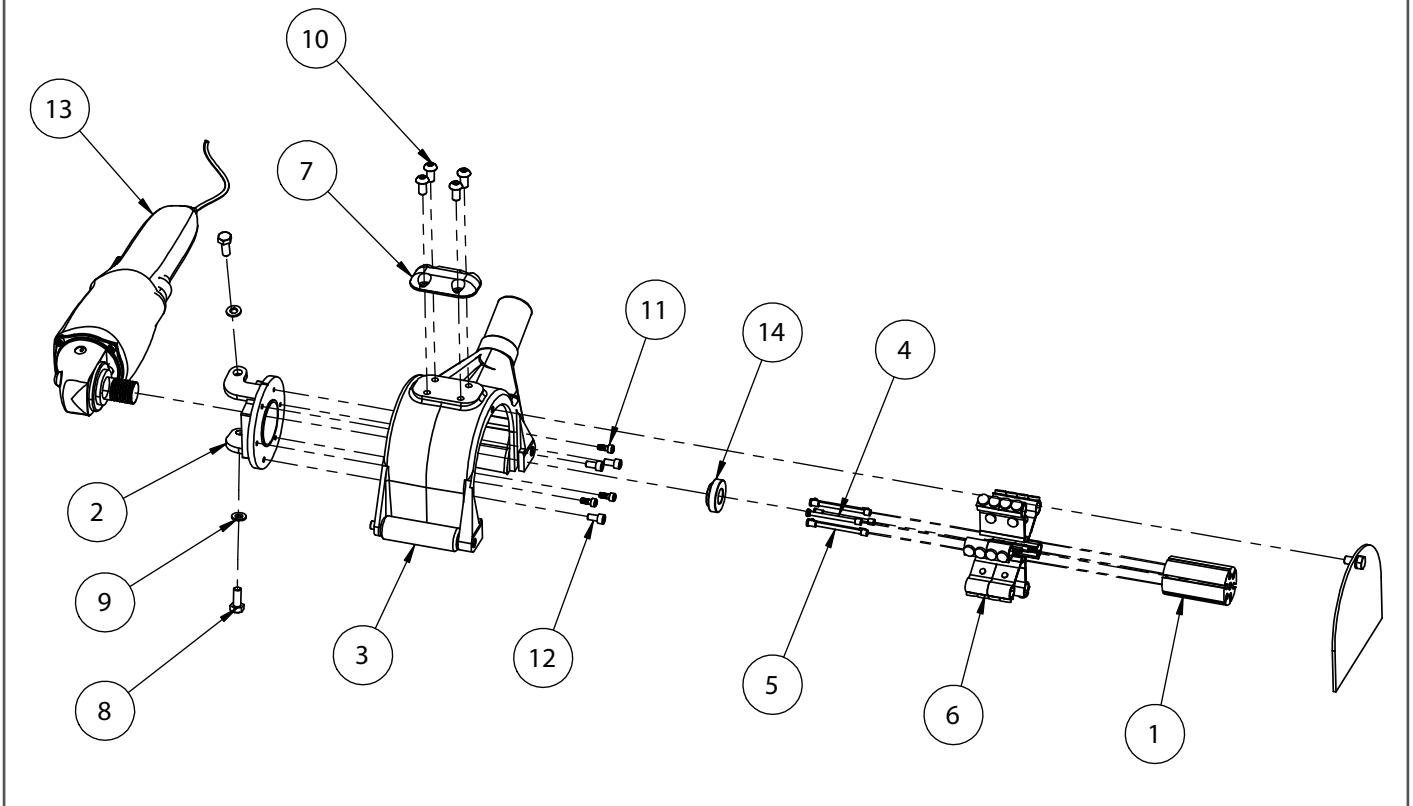
PARTS LIST - 2" PPT AIR

ITEM NO.	PART NO.	DESCRIPTION	QUANTITY
1	438.0205	2" Cutter Hub (Including Pins)	1
2	312.D219	Mounting Bracket	1
3	437.0225	2" PPT Shroud Assembly	1
4	312.D257	Hub Pin (Short)	3
5	312.D258	Hub Pin (Long)	3
6	312.MRPC	2" Heavy Duty C-Flap	6
7	312.Q460	Rubber Hand Grip	1
8	320.9234	Hex Head Bolt	2
9	812.0710	Washer	2
10	806.0816	Button Head Bolt	4
11	806.0612	Cap Head Bolt	3
12	831.3878	Cap ead Bolt	3
13	314.ARA2	Air Motor	1
14	320.9236	Spring Washer	2
15	818.0250	Plug	1
16	340.TN/6	Direction Label	1

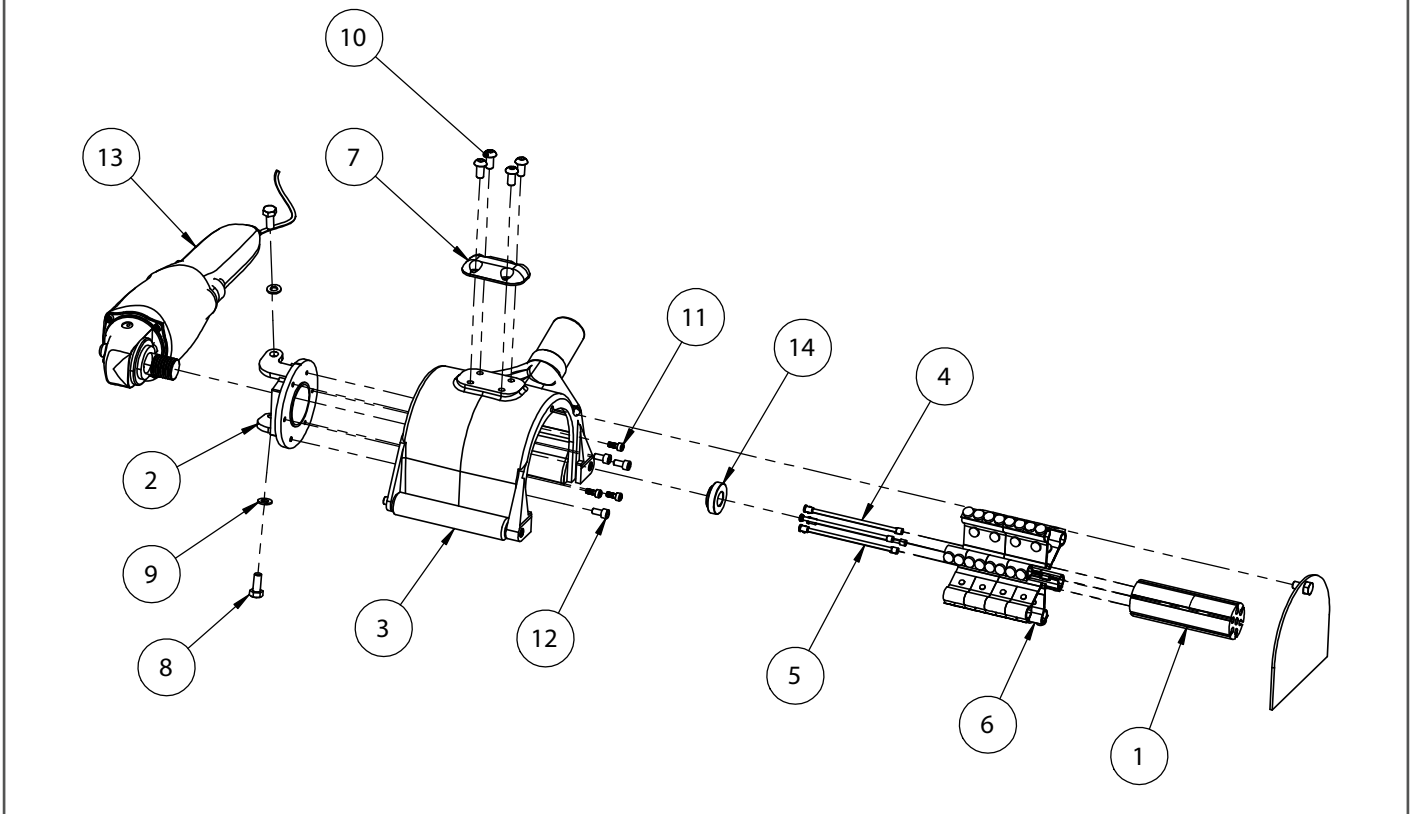
PARTS LIST - 4" PPT AIR

ITEM NO.	PART NO.	DESCRIPTION	QUANTITY
1	438.0405	4" Cutter Hub (Including Pins)	1
2	312.D219	Mounting Bracket	1
3	437.0425	4" PPT Shroud Assembly	1
4	312.D457	Hub Pin (Short)	3
5	312.D458	Hub Pin (Long)	3
6	312.MRPC	2" Heavy Duty C-Flap	12
7	312.Q460	Rubber Hand Grip	1
8	320.9234	Hex Head Bolt	2
9	812.0710	Washer	2
10	806.0816	Button Head Bolt	4
11	806.0612	Cap Head Bolt	3
12	831.3878	Cap ead Bolt	3
13	314.ARA2	Air Motor	1
14	320.9236	Spring Washer	2
15	818.0250	Plug	1
16	340.TN/6	Direction Label	1

EXPLODED VIEW - 2" PPT ELECTRIC



EXPLODED VIEW - 4" PPT ELECTRIC



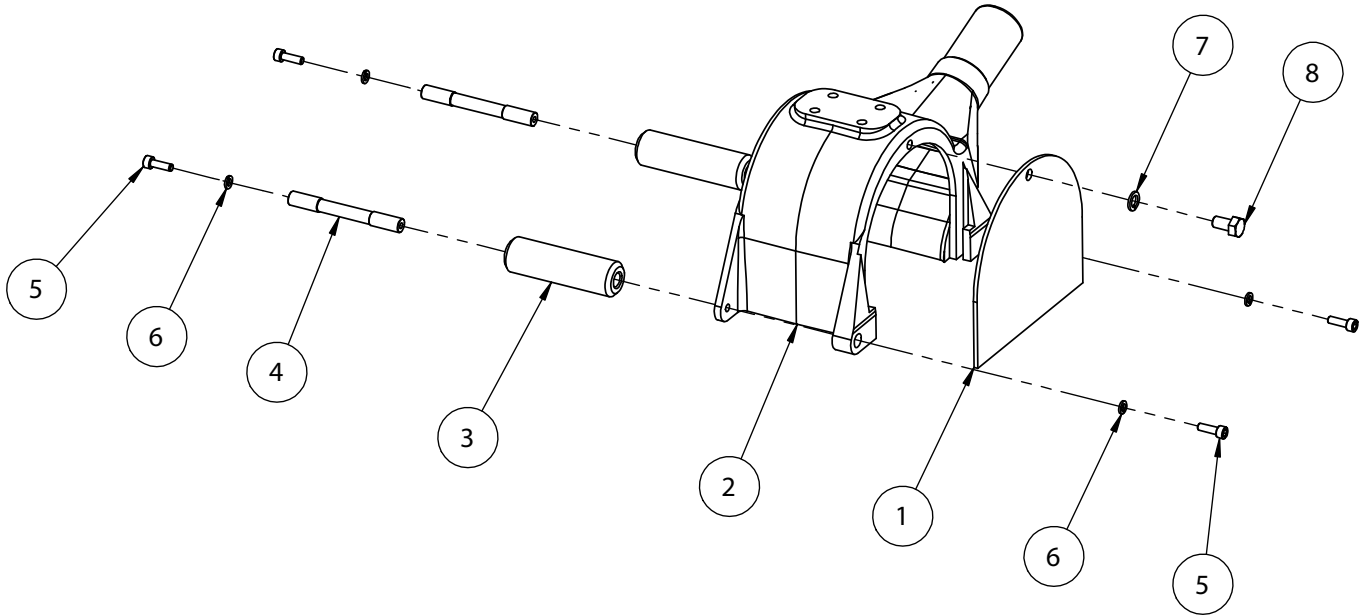
PARTS LIST - 2" PPT ELECTRIC

ITEM NO.	PART NO.	DESCRIPTION	QUANTITY
1	438.0205	2" Cutter Hub (Including Pins)	1
2	312.T200A	Mounting Bracket	1
3	437.0225	2" PPT Shroud Assembly	1
4	312.D257	Hub Pin (Short)	3
5	312.D258	Hub Pin (Long)	3
6	312.MRPC	2" Heavy Duty C-Flap	6
7	312.Q460	Rubber Hand Grip	1
8	831.0820	Hex Head Bolt	2
9	812.1080	Washer	2
10	806.0816	Button Head Bolt	4
11	806.0512	Cap Head Bolt	3
12	806.0612	Cap Head Bolt	3
13	312.1525	Electric Motor 230v	1
13a	312.1515	Electric Motor 110v	1
14	312.2335A	Electric Motor Spacer	1

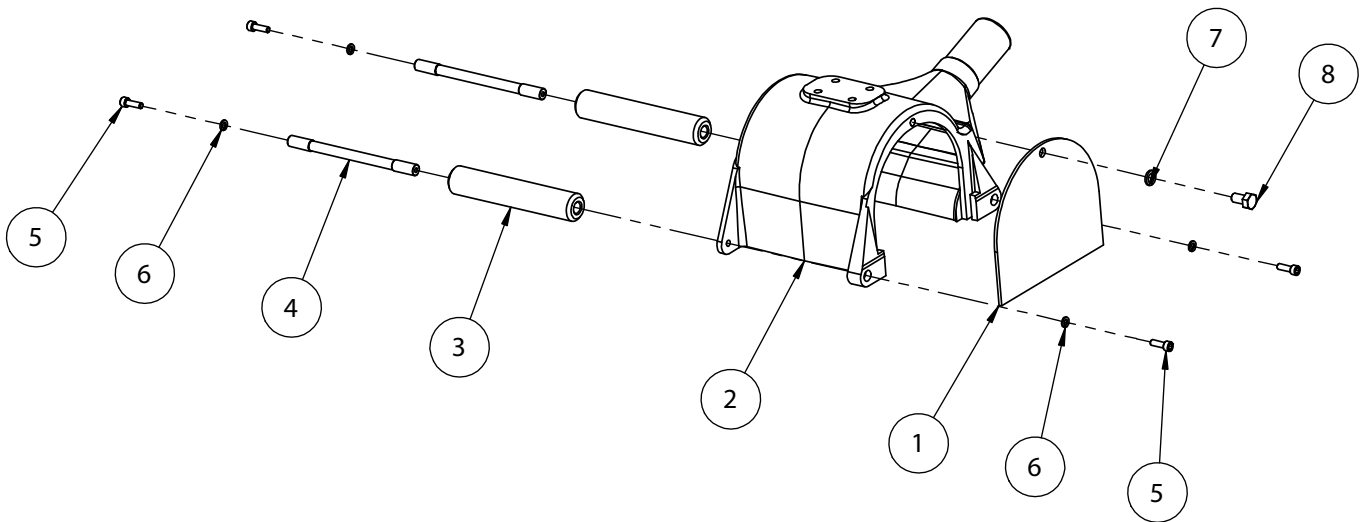
PARTS LIST - 4" PPT ELECTRIC

ITEM NO.	PART NO.	DESCRIPTION	QUANTITY
1	438.0405	4" Cutter Hub (Including Pins)	1
2	312.T200A	Mounting Bracket	1
3	437.0425	4" PPT Shroud Assembly	1
4	312.D457	Hub Pin (Short)	3
5	312.D458	Hub Pin (Long)	3
6	312.MRPC	2" Heavy Duty C-Flap	12
7	312.Q460	Rubber Hand Grip	1
8	831.0820	Hex Head Bolt	2
9	812.1080	Washer	2
10	806.0816	Button Head Bolt	4
11	806.0512	Cap Head Bolt	3
12	806.0612	Cap Head Bolt	3
13	312.1525	Electric Motor 230v	1
13a	312.1515	Electric Motor 110v	1
14	312.2335A	Electric Motor Spacer	1

EXPLODED VIEW - 2" PPT SHROUD



EXPLODED VIEW - 4" PPT SHROUD



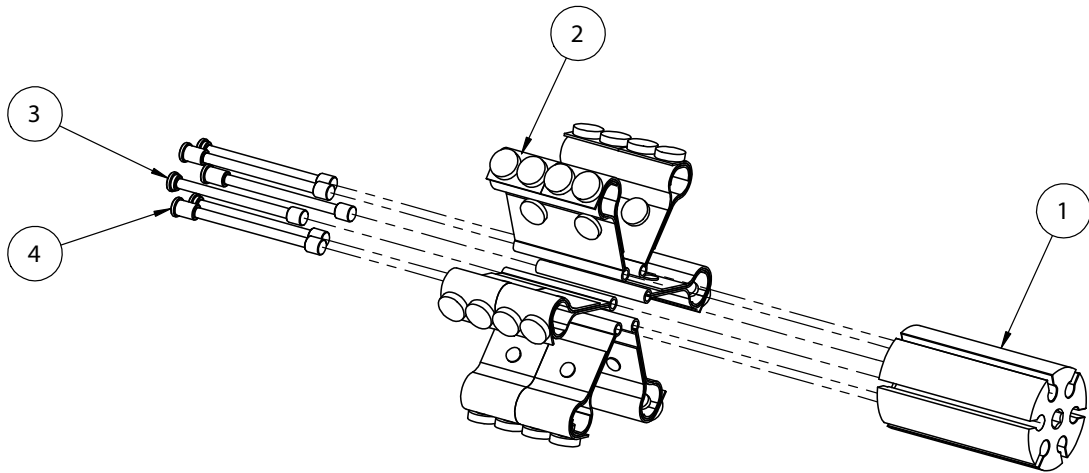
PARTS LIST - 2" PPT SHROUD

ITEM NO.	PART NO.	DESCRIPTION	QUANTITY
N/A	437.0225	PPT Shroud Assembly (Consists of items 1-8)	1
1	312.Q201	End Plate	1
2	312.Q200	2" Shroud	1
3	312.G200	2" Roller	2
4	312.D201A	2" Axle Shaft	2
5	831.0516	Cap Head Bolt	4
6	811.0500	Spring Washer	4
7	811.0800	Spring Washer	1
8	831.0815	Hex Head Bolt	1

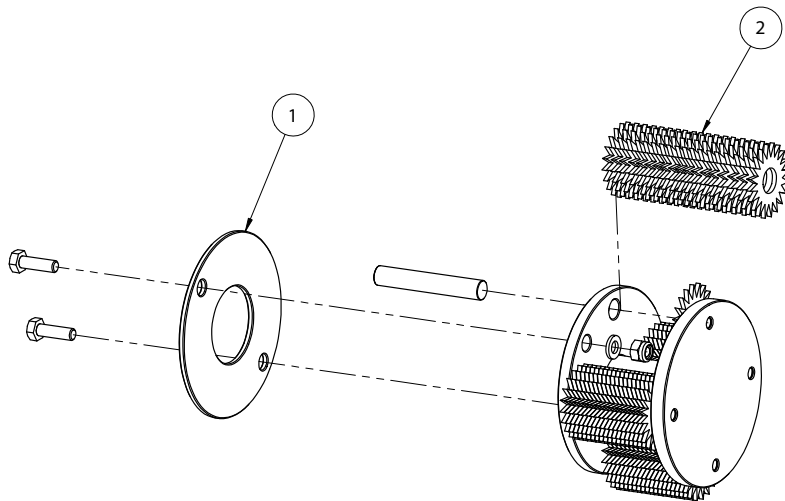
PARTS LIST - 4" PPT SHROUD

ITEM NO.	PART NO.	DESCRIPTION	QUANTITY
N/A	437.0425	PPT Shroud Assembly (Consists of items 1-8)	1
1	312.Q201	End Plate	1
2	312.Q400	4" Shroud	1
3	312.G400	4" Roller	2
4	312.D401A	4" Axle Shaft	2
5	831.0516	Cap Head Bolt	4
6	811.0500	Spring Washer	4
7	811.0800	Spring Washer	1
8	831.0815	Hex Head Bolt	1

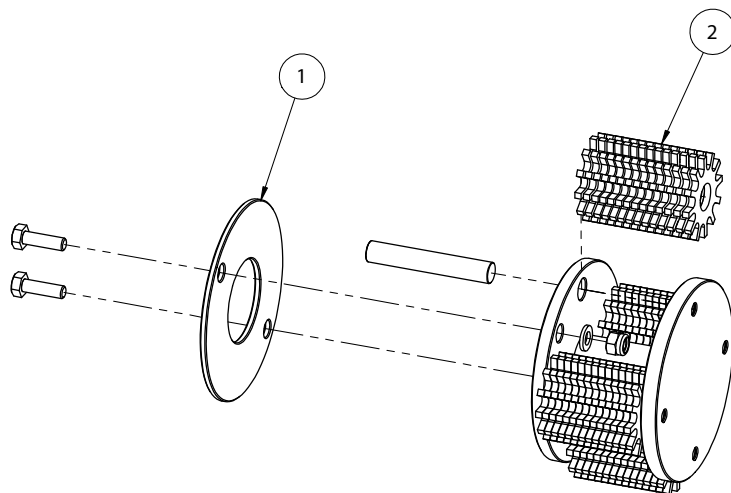
EXPLODED VIEW - 2" C-FLAP HUB



EXPLODED VIEW - 2" STAR CUTTER HUB



EXPLODED VIEW - 2" BEAM CUTTER HUB



PARTS LIST - 2" C-FLAP HUB

ITEM NO.	PART NO.	DESCRIPTION	QUANTITY
N/A	438.0235	2" C-Flap Assembly (Consists of items 1-4)	1
1	438.0205	2" Cutter Hub (Including Pins)	1
2	312.MRPC	2" Heavy Duty C-Flap	6
3	312.D257	Hub Pin (Short)	3
4	312.D258	Hub Pin (Long)	3
ITEMS NOT SHOWN			
N/A	312.D213	2" Hub Pin Set (6 pieces)	1

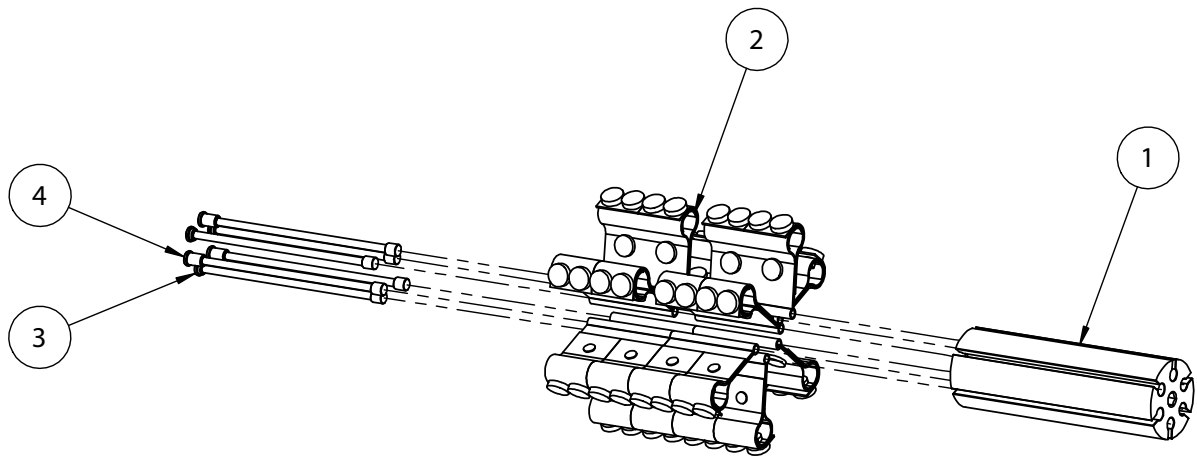
PARTS LIST - 2" STAR CUTTER HUB

ITEM NO.	PART NO.	DESCRIPTION	QUANTITY
N/A	438.0220	2" Star Cutter Hub Assembly	1
1	438.0209	2" Cutter Hub Assembly (Including Shafts)	1
2	312.S200	Star Cutter	76
ITEMS NOT SHOWN			
N/A	312.D210	Cutter Shaft Set (4 Pack)	1
N/A	831.0620	Hex Head Bolt	2
N/A	824.0600	Washer	2
N/A	812.1060	Nyloc Nut	2

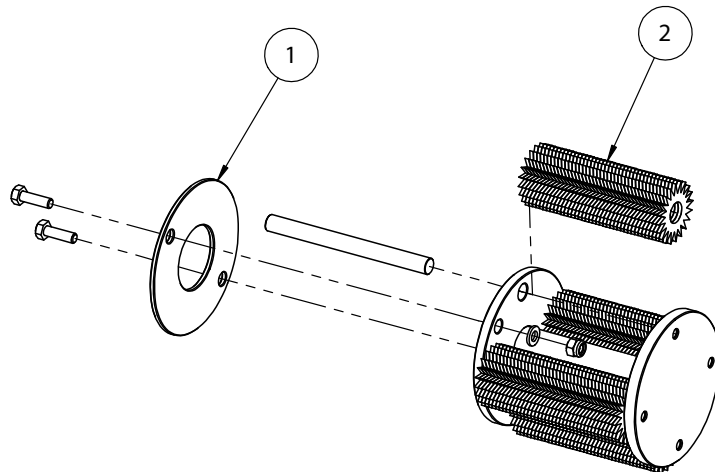
PARTS LIST - 2" BEAM CUTTER HUB

ITEM NO.	PART NO.	DESCRIPTION	QUANTITY
N/A	438.0225	2" Beam Cutter Hub Assembly	1
1	438.0209	2" Cutter Hub Assembly (Including Shafts)	1
2	312.R200	Beam Cutter	56
ITEMS NOT SHOWN			
N/A	312.D210	Cutter Shaft Set (4 Pack)	1
N/A	831.0620	Hex Head Bolt	2
N/A	824.0600	Washer	2
N/A	812.1060	Nyloc Nut	2

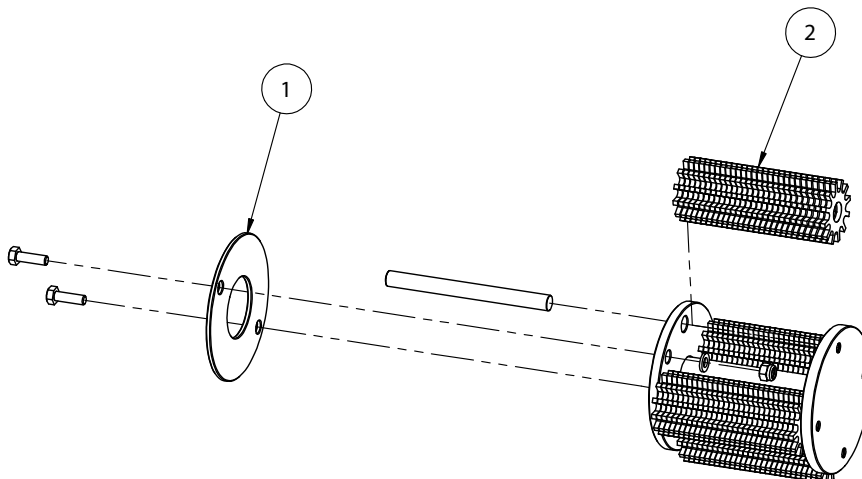
EXPLODED VIEW - 4" C-FLAP HUB



EXPLODED VIEW - 4" STAR CUTTER HUB



EXPLODED VIEW - 4" BEAM CUTTER HUB



PARTS LIST - 4" C-FLAP HUB

ITEM NO.	PART NO.	DESCRIPTION	QUANTITY
N/A	438.0435	4" C-Flap Assembly (Consists of items 1-4)	1
1	438.0405	4" Cutter Hub (Including Pins)	1
2	312.MRPC	2" Heavy Duty C-Flap	12
3	312.D457	Hub Pin (Short)	3
4	312.D458	Hub Pin (Long)	3
ITEMS NOT SHOWN			
N/A	312.D413	4" Hub Pin Set (6 pieces)	1

PARTS LIST - 4" STAR CUTTER HUB

ITEM NO.	PART NO.	DESCRIPTION	QUANTITY
N/A	438.0420	4" Star Cutter Hub Assembly	1
1	438.0409	4" Cutter Hub Assembly (Including Shafts)	1
2	312.S200	Star Cutter	160
ITEMS NOT SHOWN			
N/A	312.D410	Cutter Shaft Set (4 Pack)	1
N/A	831.0620	Hex Head Bolt	2
N/A	824.0600	Washer	2
N/A	812.1060	Nyloc Nut	2

PARTS LIST - 4" BEAM CUTTER HUB

ITEM NO.	PART NO.	DESCRIPTION	QUANTITY
N/A	438.0425	4" Beam Cutter Hub Assembly	1
1	438.0409	4" Cutter Hub Assembly (Including Shafts)	1
2	312.R200	Beam Cutter	112
ITEMS NOT SHOWN			
N/A	312.D410	Cutter Shaft Set (4 Pack)	1
N/A	831.0620	Hex Head Bolt	2
N/A	824.0600	Washer	2
N/A	812.1060	Nyloc Nut	2

TECHNICAL SPECIFICATIONS

DETAIL	2" PPT AIR	2" PPT 110v ELECTRIC	2" PPT 230v ELECTRIC	4" PPT AIR	4" PPT 110v ELECTRIC	4" PPT 230v ELECTRIC
Part Code	194.0205 194.C205	195.1215 195.C216	195.1220 195.C221	194.0405 194.C405	195.1415 195.C416	195.1420 195.C421
Description	2" PPT Air	2" PPT 110v	2" PPT 230v	4" PPT Air	4" PPT 110v	4" PPT 230v
Cutting Width	50 mm	50 mm	50 mm	100 mm	100 mm	100 mm
RPM	2,700	2,000	2,000	2,700	2,000	2,000
Working Distance From Wall	55 mm	55 mm	55 mm	55 mm	55 mm	55 mm
Power	0.9 kw	1.3 kw	1.3 kw	0.9 kw	1.3 kw	1.3 kw
Voltage	-	110v 50hz 230v 50Hz	110v 50hz 230v 50Hz	-	110v 50hz 230v 50Hz	110v 50hz 230v 50Hz
Air Consumption	30 cfm	-	-	30 cfm	-	-
Air Pressure	90 PSI	-	-	90 PSI	-	-
Air Inlet	1/4"	-	-	1/4"	-	-
Overall Length	345 mm	420 mm	420 mm	345 mm	420 mm	420 mm
Weight (C-Flaps)	4.40 kg	4.95 kg	4.95 kg	5.05 kg	5.60 kg	5.60 kg
Weight (Cutters)	6.05 kg	6.60 kg	6.60 kg	7.35 kg	7.90 kg	7.90 kg
Noise Level L _{WA} dB (A)	91.80 dB(A)	91.80 dB(A)	91.80 dB(A)	90.45 dB(A)	90.45 dB(A)	90.45 dB(A)
Vibration Level m/s ² Primary	0.52 m/s ²	3.6 m/s ²	3.6 m/s ²	0.86 m/s ²	3.33 m/s ²	3.33 m/s ²
Vibration Level m/s ² Secondary	0.76 m/s ²	4.5 m/s ²	4.5 m/s ²	0.84 m/s ²	2.49 m/s ²	2.49 m/s ²
Vibration Level m/s ² Primary	0.59 m/s ²	1.31 m/s ²	1.31 m/s ²	1.51 m/s ²	1.46 m/s ²	1.46 m/s ²
Vibration Level m/s ² Secondary	1.36 m/s ²	3.89 m/s ²	3.89 m/s ²	1.63 m/s ²	2.25 m/s ²	2.25 m/s ²
Trelawny SPT Ltd operates a policy of continuous product development and refinement and therefore reserves the right to change technical specifications and product designs without giving prior notice.						

Noise Levels measured in accordance with:
EN ISO 4871:2009

Vibration levels measured in accordance with:
EN ISO 20643:2008+A1:2012

This equipment has been designed and produced in accordance with the following directive:
2006/42/EC Machinery Directive

If your company has any problem with our products or would like to discuss the possibility of an improvement being made to them, then please do not hesitate to contact us. Your comments are both important and appreciated.

Trelawny tools are thoroughly tested under specified conditions in accordance with applicable internationally recognised standards. When a tool is used on site the conditions may not be the same as those used in our tests.

Trelawny Surface Preparation Technology operates a policy of continuous product development and refinement and therefore reserves the right to change technical specifications and product designs without giving prior notice.

All rights reserved. Any unauthorised use or copying of the contents or part thereof is prohibited. This applies to trademarks, model denominations, part numbers and drawings.

Use only genuine Trelawny consumables with this product. The use of non-Trelawny spare parts invalidates the warranty.

TROUBLE SHOOTING

FAULT	POSSIBLE CAUSE	ACTION
High wear rate of C-Flaps	Both rollers have not been in contact with the surface.	Ensure operators maintain correct impact height for Flaps
	Low air pressure or low air supply	Correct air pressure is 90psi and requires a minimum of 30cfm. Check hose bore is minimum of 13mm.
	Flaps fitted wrong way to direction of rotation	Ensure the writing on the Flaps face towards the vacuum take off.
	Shroud set at the wrong height	Ensure shroud is set to upper setting (I) when using C-Flaps.
C-Flap Straps have torn	Tool has been run on the edge of steelwork, over welded joints or over rivet heads etc.	Ensure C-Flaps are only used on a flat surface
Edges of Carbide tips have worn	Tool has started up then applied to the surface	Prior to starting ensure the motor is started with both rollers in contact with the surface to be worked.
	Air pressure too high or too low	Check air pressure is correct at 90psi
	Motor speed too fast or too slow	Check the the RPM is correct at 2,700 rpm for air motors and 2,000 rpm for electric motors.
Flaps have worn on front or rear edge	Motor speed too fast or too slow	Check air pressure is correct at 90psi
	Air pressure too high or too low	Check the the RPM is correct at 2,700 rpm for air motors and 2,000 rpm for electric motors.
Flaps have burnt/melted around carbide tips	Vacuum not attached or poor vacuum flow	Connect a minimum of 2,000-watt industrial vacuum system and ensure that the vacuum hose is clear.

NOTES

THE PERFECT FINISH
STARTS WITH
TRELAWNY



DEALER STAMP:



CONTACT US

Trelawny SPT Limited

Trelawny House, 13 Highdown Road, Sydenham Industrial Estate,
Leamington Spa, Warwickshire, CV31 1XT, United Kingdom

Telephone: +44 (0)1926 883781

Email: sales@trelawny.com

Website: www.trelawny.com

Manual Part Number:

735.9904 01

CERTIFIED
ISO 9001



0008