

# LONG REACH SCALER

## OPERATION & MAINTENANCE MANUAL



## CONTENTS

INTRODUCTION .....	3
GENERAL INFORMATION .....	3
EU DECLARATION OF CONFORMITY .....	4
UKCA DECLARATION OF CONFORMITY .....	5
DECLARATION OF CONFORMITY .....	6
SAFETY .....	7
HAND ARM VIBRATION .....	7
WARRANTY .....	7
PRE START CHECKS (DAILY) .....	8
OPERATION .....	8
SUGGESTED LUBRICANTS .....	8
MACHINE STORAGE .....	8
SERVICING & MAINTENANCE .....	9
EXPLODED VIEW - LR CHISEL SCALER .....	10
PARTS LIST - LR CHISEL SCALER .....	11
EXPLODED VIEW - LR NEEDLE SCALER .....	12
PARTS LIST - LR NEEDLE SCALER .....	13
EXPLODED VIEW - LR LITE CHISEL SCALER .....	14
PARTS LIST - LR LITE CHISEL SCALER .....	15
EXPLODED VIEW - LR LITE NEEDLE SCALER .....	16
PARTS LIST - LR LITE NEEDLE SCALER .....	17
TECHNICAL SPECIFICATIONS .....	18
TECHNICAL SPECIFICATIONS .....	19
TROUBLE SHOOTING .....	19
NOTES .....	19
CONTACT US .....	20

# INTRODUCTION

Thank you for choosing a product by Trelawny SPT Ltd, an innovative leading brand in the Surface Preparation sector.

This product has been manufactured under stringent quality standards to meet superior performance criteria. This manual contains the necessary maintenance information for you to ensure proper operation and care for this equipment.

In the unlikely event that you experience a problem please do not hesitate to contact your local Trelawny dealer or agent. We always welcome feedback and comments from our valued customers.



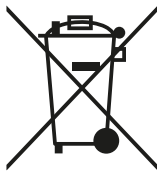
## WARNING:

Carefully read through these original instructions before using your new TRELAWNY Equipment. Take special care to read warnings. TRELAWNY products have many features that will make your job faster and easier. Safety, performance, and dependability have been given top priority in the development of this product, making it easy to operate and maintain.



## ENVIRONMENTAL PROTECTION:

The equipment, accessories and packaging should be sorted for environmentally friendly recycling. The plastic components are labelled for categorised recycling.



## DISPOSAL:

Waste products should not be disposed of with household waste. Please recycle where facilities exist. Check with your local authority or retailer for recycling advice.

# GENERAL INFORMATION

Before operating any TRELAWNY equipment, this manual must be read and understood by the operator, if in any doubt ask your supervisor before using this equipment. Failure to follow these instructions could result in damage to the equipment and/or personal injury.

Trelawny SPT Ltd disclaims all responsibility for damage to persons or objects arising as a consequence of incorrect handling of the equipment, failure to inspect the equipment

prior to starting work for damage or other faults that may influence the operation of safe working of the equipment, or failure to follow the safety regulations listed or applicable to the job site.

Operators should be familiar with the data given in the specification section. Please keep these instructions in a safe and accessible place.

# EU DECLARATION OF CONFORMITY



## EU Declaration of Conformity

We, **Trelawny SPT Ltd of 13 Highdown Road, Sydenham Industrial Estate, Leamington Spa, Warwickshire, CV31 1XT, GB** declare that the DoC is issued under our sole responsibility and belongs to the following product:

PART NUMBER.....  
DESCRIPTION .....  
SERIAL NUMBER .....  
YEAR OF CONSTRUCTION .....

The object of the declaration described above is in conformity with the relevant **Union Harmonisation Legislation:**

- **2006/42/EC** Machinery Directive

The following harmonised standards and technical specifications have been applied:

- **EN ISO 11148-4:2012** Hand-held non-electric power tools — Safety requirements  
Part 4: Non-rotary percussive power tools

Technical files are held by Indutrade Benelux BV, Anton Philipsweg 1, 1422 AL Uithoorn, Netherlands

**Notified Body:**  
Not Applicable. Machinery is not listed under ANNEX IV of the Machinery Directive.

**Place of Declaration:**  
Trelawny SPT Ltd, 13 Highdown Road, Sydenham Industrial Estate, Leamington Spa, Warwickshire, CV31 1XT, GB

**Date of Declaration:**  
December 2024

**Signed by:**

Daniel Rowledge  
Managing Director

# UKCA DECLARATION OF CONFORMITY



## UKCA Declaration of Conformity

We, **Trelawny SPT Ltd of 13 Highdown Road, Sydenham Industrial Estate, Leamington Spa, Warwickshire, CV31 1XT, GB** declare that the DoC is issued under our sole responsibility and belongs to the following product:

PART NUMBER.....

DESCRIPTION .....

SERIAL NUMBER .....

YEAR OF CONSTRUCTION .....

The object of the declaration described above is in conformity with the relevant **Statutory Requirements:**

- **2008 No. 1597** Supply of Machinery (Safety) Regulations 2008

The following designated standards and technical specifications have been applied:

- **BS EN ISO 11148-4:2012** Hand-held non-electric power tools — Safety requirements  
Part 4: Non-rotary percussive power tools

Technical files are held by **Daniel Rowledge** at the Trelawny address stated above.

**Approved Body:**

Not Applicable. Machinery is not listed under ANNEX IV of the Machinery Directive.

**Place of Declaration:**

Trelawny SPT Ltd, 13 Highdown Road, Sydenham Industrial Estate, Leamington Spa, Warwickshire, CV31 1XT, GB

**Date of Declaration:**

December 2024

**Signed by:**

Daniel Rowledge  
Managing Director

# DECLARATION OF CONFORMITY

<p><b>CZ</b> Prohlášení o přizpůsobení                  My, společnost Trelawny SPT Limited                  podávamej daňové přiznání, že výrobek a dodávka výrobku                  název výrobku                  Model, výrobní číslo                  Rok výroby                  Pro které se průkaz týkající, je přizpůsobení s zásobou od následující příkazov a jejich pohotovostni:                  2006/42/EC Příkaz soustrojí                  2014/35/EC Příkaz nízkého napětí (upotřebitelné jedině do výrobku použít elektrické energie)</p>	<p><b>LT</b> ATITIKTIES DEKLARACIJA                  Mes, Trelawny SPT Limited                  Prisiidami visą atsakomybę deklaruojame, kad tiekiamas / gaminamas produktas                  Produkto pavadinimas                  Modelis, serijos numeris                  Pagaminimo                  Kuriam laikoma ši deklaracija, atitinka šių direktyvų, norminių aktų ir su jais susijusių, standartų reikalavimus:                  2006/42/EC Įrangos direktyva                  2014/35/EC Žemos įtampos direktyva (laikoma tik elektriniams įrengimams)</p>
<p><b>DE</b> Übereinstimmungserklärung                  Wir, Trelawny SPT Limited                  erklären, dass unter unserer alleinigen Verantwortung für die Lieferung und Herstellung des Produktes                  Name des Produktes                  Modell, Seriennummer                  Jahr der Herstellung                  auf welches sich dieses Dokument bezieht, stimmt mit den Vorgaben der folgenden Direktive, normativen Dokumente und deren                  jeweiligen Maßstäbe ein:                  2006/42/EC Maschinieriedirektive                  2014/35/EC Niederspannungsdirektive (nur zutreffend auf Produkte, die Strom benutzen)</p>	<p><b>MT</b> DIKJARAZZJONI TA KONFORMITA                  Ahna, Trelawny SPT Limited                  Niddikjaraw li ahna responsabbli kompletament għal provista / maniffattura tal-prodott hawn 1msemmi:                  Isem Il-Prodott                  Mudell, Serial number                  Sena la 'produzzjoni                  Dan id-dokument magħmul għal prodott imsemmi hawn fuq, li huwa skond il-provizjonijiet imsemmija fid-dokumenti tal-klassi tax-xogħol:                  2006/42/EC Machinery Directive                  2014/35/EC Low Voltage Directive (tapplika biss għal prodotti li jahdmu bi-elekttriku)</p>
<p><b>DK</b> Erklæring om overensstemmelse                  Vi, Trelawny SPT Limited                  Erklærer hermed at under vores ene forhandling ansvar for vores forhandling/produktion af produktet                  Produkt navn                  Model, serie nummer                  Produktionsår                  For hvilket dette dokument referer, at deler i overensstemmelse med bestemmelser af følgende direktiver, normative dokumenter og deres relevante standard:                  2006/42/EC Machinery directive                  2014/35/EC Low voltage directive</p>	<p><b>NL</b> EENVORMIGHEIDSVERKLARING                  Wij, Trelawny SPT Limited                  Verklaaren dat wij de volledige verantwoordelijkheid dragen voor het leveren/fabriceren van het volgende product:                  Naam van het product                  Type, Serienummer                  Productiejaar                  En verklaaren dat het product waarnaar dit document verwijst eenvoudig is met de voorzieningen van de volgende Richtlijn(en), Normatieve Documenten en hun relevante Standaarden:                  2006/42/EC MACHINERIECHTLIJN                  2014/35/EC LAAGSPANNINGSRICHTLIJN (uitsluitend van toepassing bij producten die elektrische stroom gebruiken)</p>
<p><b>EE</b> TOOTE VASTAVUSE DEKLARATSIOON                  Meie, Trelawny SPT Limited                  Deklareerime, et vastutame järgmise varustuse/toote müügi eest                  Toote nimetus                  Mudel, Seeria number                  Aegsita loodangu                  Arstul dokument lüendab toote vastavust järgmistele direktiivide/lele, normatiividele ja nendega samaväärsetele standarditele:                  2006/42/EC MASINA DIREKTIIVID                  2014/35/EC MADALPINGE DIREKTIIVID (Kohandatakse vaid tootele, mis kasutavad elektrivoolu)</p>	<p><b>PL</b> Deklaracja Zgodności                  My, Firma Trelawny SPT Limited.                  oświadczamy w naszej odpowiedzialności, że produkcja i dostawa urzadzzenia                  Nazwa produktu                  Model, numer seryjny                  Rok produkcji                  do którego ten dokument należy, jest zgodne z klauzulami następujących zarządzeń i ich istotnych standardów:                  2006/42/EC Zarządzenie mechaniczne                  2014/35/EC Zarządzenie niskiego napięcia elektrycznego (Zastosowanie tylko przy urządzeniach elektrycznych)</p>
<p><b>ES</b> Declaración de Conformidad                  Nosotros, Trelawny SPT Limited                  Declaramos que bajo nuestra completa responsabilidad de la fabricación/suministro del producto                  Nombre del Producto                  Modelo, No de Serie                  Año de producción                  A quien este documento se refiere, está de acuerdo con lo relacionado en la Directriz, Normativa Documentada y sus relevantes                  standards:                  2006/42/EC Directorio de Maquinaria                  2014/35/EC Directorio de Bajo Voltaje (Aplicable solamente a productos que funcionen con electricidad)</p>	<p><b>PT</b> DECLARAÇÃO DE CONFORMIDADE CE                  A empresa TRELAWNY SPT LIMITED                  Declara, sob sua inteira responsabilidade, que o fornecimento/fabrico do seguinte produto:                  Designação do produto                  Modelo, Número de Série                  Ano de produção                  a que esta declaração se refere, está em conformidade com o preceituado nas Directivas e Normas Comunitárias abaixo indicadas:                  2006/42/EC DIRECTIVA DE MÁQUINAS                  2014/35/EC DIRECTIVA DE BAIXA VOLTAGEM (Aplicável apenas a produtos que utilizam energia eléctrica)</p>
<p><b>FI</b> ILMOITUSVAHVISTUS                  Me, Trelawny SPT Limited                  Valvistanime tuotteen toimittamisesta/valmistamisesta                  Tuotteenimi                  Malli, sarjanumero                  Valmistusvuosi                  Täällä todistuksella vahvistamme säädökset seuravien ohje/ohjesien, Yleisin papereihin ja niihin liittyvät vaatimukset:                  2006/42/EC KONEISTON OHJEET                  2014/35/EC PIENJÄNNITTE OHJEET (tarvitaan ainoastaan tuotteille jotka käyttävät sähkövoimaa)</p>	<p><b>RU</b> СВИДЕТЕЛЬСТВО О СООТВЕТСТВИИ                  Мы, Trelawny SPT Limited                  Заявляем, что несем полную ответственность за поставку/производство нижеуказанной                  продукцией                  наименование изделия                  Модель, серийный номер                  Год выпуска                  на которую выдано настоящее Свидетельство, и которая соответствует положениям следующей(их) директиве(ы),                  нормативным документам и относящимся к ним стандартам:                  2006/42/EC ДИРЕКТИВА ПО МЕХАНИЗМАМ                  2014/35/EC ДИРЕКТИВА ПО НИЗКОВОЛЬТНОМУ ОБОРУДОВАНИЮ (распространяется только на изделия с электропитанием)</p>
<p><b>FR</b> DÉCLARATION DE CONFORMITÉ                  Nous, soussignés Trelawny SPT Limited                  déclarons que le produit sous-nommé                  Nom du produit                  Modèle et Numéro de Série                  Année de production                  et pour lequel nous prenons entière responsabilité pour sa fourniture et manufacture, est conforme aux clauses des directives                  suivantes documents nominatifs et normes qui s'y appliquent:                  2006/42/EC DIRECTIVE POUR LA MACHINERIE                  2014/35/EC DIRECTIVE POUR BAS VOLTAGE (n'est applicable qu'aux produits utilisant l'énergie électrique)</p>	<p><b>SE</b> FÖRSÄKRAN OM ÖVERENSSTÄMMELSE                  VI, TRELAWNY SPT LIMITED                  FÖRKLARAR ATT VI MED ENSAMT ANSVAR ANSKAFFAT / TILLVERKAT PRODUKTEN PRODUKTNAMN                  MODELL och SERIE NUMMER                  Tillverkningsår                  TILL VILKEN DETTA DOKUMENT HÄNVISAR ÄR I ÖVERENSSTÄMMELSE MED FÖLJANDE DIREKTIV, NORMATIVA                  DOKUMENT OCH DERAS RELEVANTA STANDARDER                  2006/42/EC MASKINDIREKTIV                  2014/35/EC LÅGSTRÖMSDIREKTIV (TILLÄMPLIG PÅ ELEKTRISK DRIVNA PRODUKTER)</p>
<p><b>GR</b> ΔΗΛΩΣΗ ΠΙΣΤΟΤΗΤΑΣ                  Η εταιρεία Trelawny Spt Limited                  Δηλώνει ότι έχει τη μονδική ευθύνη ως κατασκευαστρια / προμηθευτρια του παρακάτω προϊόντος περιγραφη προϊόντος                  μοντέλο, αριθμός σειράς                  έτος παραγωγής                  και στο οποίο αναφέρεται αυτή η δήλωση, είναι συμβατό με τις προδιαγραφές που ορίζονται στις ακόλουθες Κοινοτικές                  Οδηγίες Ελεγκτικές Διατάξεις κι άλλες σχετικές προδιαγραφές                  2006/42/EC ΟΔΗΓΙΑ ΠΕΡΙ ΜΗΧΑΝΗΜΑΤΩΝ                  2014/35/EC ΟΔΗΓΙΑ ΠΕΡΙ ΧΑΜΗΛΗΣ ΤΑΣΗΣ (αφορά μόνον προϊόντα που λειτουργούν με ηλεκτρικό ρεύμα)</p>	<p><b>SI</b> IZJAVA O SKLADNOSTI                  Trelawny SPT Limited                  pod polno odgovornostjo izjavljamo, da so spodaj navedeni proizvodi, ki jih dobavljamo/producirajamo:                  Ime proizvoda                  Model, serijska številka                  Leto proizvodnje                  na katere se ta dokument nanaša, proizvedeni v skladu z določili naslednjih direktiv, normativnih dokumentov in njihovih relevant-                  nih standardov:                  2006/42/EC DIREKTIVA O STROJIH                  2014/35/EC DIREKTIVA O STROJIH Z NIZKO VOLTAŽO (nanaša se samo na proizvode na električni pogon)</p>
<p><b>HU</b> MEGFELELŐSÉGI NYILATKOZAT                  Mi, A "Trelawny SPT Limited" cég                  Felelősségünk tudatában kijelentjük, hogy mint a termék szállítója/gyártója                  Termék neve                  Típus, Sorozatszám                  Gyártási év                  amelyre jelen dokumentum vonatkozik, megfelel az alábbi Irányelv(ek), Irányadó Dokumentumok előírásainak, és az azokat                  meghatározó szabványoknak:                  2006/42/EC GÉPÉSZETI IRÁNYELVEK                  2014/35/EC KISFESZÜLTÉSŰ IRÁNYELVEK (Csak az elektromos meghajtású gépeknél)</p>	<p><b>TR</b> UYGUNLUK BEYANI                  Trelawny SPT Limited                  Aşağıdaki, üretim ve tedarikinden tek başına sorumlu olduu ürünün                  Ürün adı                  Model/Seri no                  Üretim yılı                  bu belgenin ilgili olduu apaöydaki yönetmeliklerin, norm belgelerinin ve ilgili standartları'nın koşullarına uygun olduunu beyan                  eder:                  2006/42/EC MAKYNALAR YÖNETMELYDY                  2014/35/EC DÜPÜK GERİLİM YÖNETMELYDY (Yalnızca elektrikle çalyan ürünlerde geçerlidir)</p>
<p><b>IT</b> DICHIARAZIONE DI CONFORMITA                  La Società Trelawny SPT Limited                  Dichiaro, sotto la propria responsabilità, che la fornitura / produzione del prodotto                  Nome prodotto                  Modello, codice                  Anno di produzione                  a cui si riferisce tale documento è conforme alle seguenti Direttive, ai documenti della Normativa ed ai relativi standard:                  2006/42/EC DIRETTIVA SULLE APPARECCHIATURE                  2014/35/EC DIRETTIVA SUL BASSO VOLTAGGIO (applicabile esclusivamente per i prodotti che utilizzano energia elettrica)</p>	

# SAFETY

## DO:

- Wear personal protective equipment including safety goggles, footwear, ear defenders and gloves. In some environments it will be necessary to wear facemasks or breathing apparatus.
- Be aware that this equipment can create dust and flying debris.
- Keep hands, feet and clothing away from moving parts.
- Follow the prestart checks detailed in this manual.
- Ensure that the workplace is well ventilated.
- Be aware of others working around you.
- Always follow safe-working practices.
- Inspect the equipment prior to using.
- Store this equipment in a secure and dry environment.

## DO NOT:

- Modify this equipment in any way. This will invalidate the warranty and could lead to serious injury.
- Allow the equipment to run unattended.
- Use petrol (gasoline), thinners or any other high flash point solvent to clean the equipment.
- Disassemble or repair unless Trelawny trained.
- Permanently fix the operating lever or button in the on/run position.

# HAND ARM VIBRATION

Trelawny Equipment may cause hand-arm Vibration Syndrome injury if their use is not adequately managed.

We advise you to carry out a risk assessment and to implement measures such as; limiting exposure time [i.e. actual trigger time, not total time at work], job rotation, ensuring the tools are used correctly, ensuring the tools are maintained according to our recommendations, and ensuring that the operators wear personal protective equipment (PPE) particularly gloves and clothing to keep them warm and dry.

Employers should consider setting up a programme of health surveillance to establish a benchmark for each operator and to detect early symptoms of vibration injury.

We are not aware of any PPE that provides protection against vibration injury by attenuating vibration emissions.

**See 'Specifications' section for vibration emission data.**

Further advice is available from our Technical Department.

We strongly advise you to visit the Health & Safety Executive website <http://www.hse.gov.uk/vibration> - this site provides excellent advice and information on HAV and currently, includes a Hand-Arm Vibration Exposure Calculator that is easy to use to work out the daily vibration exposure for each of your operators.

# WARRANTY

When you choose TRELAWNY, you're investing in a product engineered for strength, durability, and unwavering reliability. Our equipment is built to endure the toughest challenges, showcasing nearly 80 years of craftsmanship in Surface Preparation Technology. We take pride in being the industry benchmark, offering not just a tool but a lasting companion for tough jobs, backed by a 12-month warranty for peace of mind.

Register your TRELAWNY product within 30 days of purchase by scanning the QR code to activate your warranty and enjoy the full support from our team.

**PLEASE RETAIN YOUR PROOF OF PURCHASE, AS IT WILL BE REQUIRED TO PROCESS ANY WARRANTY CLAIMS.**

The following are not covered under the Trelawny warranty:

- Damage caused by abuse, misuse, dropping or other similar damage caused by or as a result of failure to follow assembly, operation or user maintenance instructions.
- Alterations, additions or repairs carried out by persons other than Trelawny or their recognised agents.

- Transportation costs to and from Trelawny or their recognised agents, for repair or assessment against a warranty claim, on any equipment.
- Materials and/or labour costs to renew, repair or replace components due to fair wear and tear.

In no case whatsoever shall the Customer be entitled to claim damages, in particular but not be limited, loss of profit and other direct or indirect or consequential damage. This exclusion of liability, however, does not apply to unlawful intent or gross negligence on our part, but does apply to unlawful intent or gross negligence of persons employed or appointed by us to perform any of his obligations.



All warranty claims should firstly be directed to Trelawny SPT Ltd. Please provide, part number, serial number and proof of purchase, either by telephone or E-mail.

Tel: +44 (0)1926 883781

Email : [warranty@trelawny.com](mailto:warranty@trelawny.com)

## PRE START CHECKS (DAILY)

- The compressed air must be free from water and dirt. Always clear the air hose before connecting to the tool.
- Ensure that no moisture (condensation) is present in the air hose.
- Ensure a minimum of 10mm (3/8") bore air hose is used and all couplings are secure, leak free and in good condition.
- Limit the length of air hose to 10M. Where extra length is necessary, for each additional 15M of air hose used, the pressure drop is approximately 0.21bar (3psi).
- For safe and efficient operation, the correct operating pressure is 6.2bar (90 psi).
- Do not let the operating pressure fall below 5.5bar (80psi) or rise above 6.9bar (100 psi).
- In particularly cold weather it is recommended that a proprietary anti-freeze lubricating oil is used.

## OPERATION

### Prior to operating the tool check:

That all parts of the tool are fully screwed/fitted together and secure, if you are in any doubt ask your supervisor before using this equipment.

### That the air pressure is correct for this tool 6.2 bar (90 p.s.i.).

That a liberal amount of lubricant has been put into the air inlet of the tool. (See suggested lubricants)

Safe use of this tool requires a solid stance and secure foothold; the operator must adopt a firm and stable position at all times.

To operate the tool, which is dependant on the type of lever fitted, for those fitted with a safety lever, first push thumb button forwards and then for both styles of lever, pull the lever towards the hand grip to start the tool, then apply the Chisel or Needles to the surface being prepared.

Note: Several types of Chisel & Needles are available for the Long Reach Scaler to suit the job in hand, including Aluminium Bronze spark resistant Chisels & Needles.

**Warning!** This tool will continue to run for a few seconds after releasing the throttle lever; it is recommended that the tool remains in contact with the work surface until the air is exhausted.

Maintain contact with the work surface with sufficient pressure to keep the tool from bouncing off the surface. Handled correctly the Long Reach Scaler will work quickly and efficiently.

### To switch off, simply release the throttle lever.

Excessive operator pressure will not improve the tools efficiency but could cause premature tool failure and increase operator fatigue. It could also increase the vibration emission level.

Never allow the tool to run continuously whilst not in contact with the surface being prepared.

Do not use the Scaler as a lever, if the Chisel becomes embedded in the material, withdraw and try again. Never allow the tool to run continuously whilst not in contact with the surface being prepared.

## SUGGESTED LUBRICANTS

Oil the tool daily before use. Put a few drops of one of the following zinc free air tool lubricants through the air inlet:

SHELL S22 or R10, CASTROL Hyspin ZZ32

It is recommended that an inline lubricator be installed in the air hose adjacent to the tool.

### Cleaning

If operation becomes unproductive and the piston shows signs of sticking, dismantle and clean with a highly refined paraffin.

Immediately after cleaning, thoroughly oil the tool with one of the recommended lubricants.

## MACHINE STORAGE

### Short period storage: up to 3 months

Clean outside of the equipment and inspect the consumable items for wear, replace any worn parts as required. Insert a liberal quantity of air tool through the air inlet and run briefly to ensure that the internal components are coated with oil. Cover and store the equipment in a dry location.

### Long period storage: over 3 months

Follow instructions set out in 'short period storage'. Additionally lubricate any exposed moving parts with one of the suggested lubricants. Repeat this process every 3 months.

# SERVICING & MAINTENANCE

## SERVICING

Only a competent person, in a suitably equipped workshop, must carry out maintenance. Disconnect the tool from the air supply before carrying out any of the following operations.

## DISMANTLING

After ensuring that the air supply is turned off, remove the tool from the airline. Thoroughly clean the outside of the tool prior to dismantling.

## Cleaning

At intervals of no more than 40 hours or if operation becomes unproductive and the Piston shows signs of sticking, dismantle and clean with a highly refined paraffin. Replace worn components as necessary. Immediately after cleaning, thoroughly oil the tool with one of the recommended lubricants.

## Piston and Cylinder Removal

Remove the Chisel Holder (10) or Needle Attachment. Clamp the Cylinder (8) firmly in a vice using the flats provided. Using a suitable wrench and the spanner flats provided, unscrew the Cover (5) from the Cylinder (8). This may initially need some extra effort to break the bond. With the Cylinder (8) free of the Cover, push the Piston (6) out of the Cylinder (8).

Remove the Cylinder (8) from the vice and inspect all parts for wear, particularly the Piston (6) and the Cylinder's bores. Remove the two O' Rings (7)(9) from the Cylinder (10).

## Valve Body Servicing

Clamp the Valve Body Assembly firmly in a vice at the Valve Body (1A) using the flats provided, with the Throttle Lever (1B) uppermost. Using a 3mm diameter pin punch and small hammer, remove the Throttle Lever Roll Pin (1C), and remove the Throttle Lever (1B). Rotate the Valve Body (1A) 180 degrees in the vice to gain access the Valve Cap (1E). Unscrew the Valve Cap (1E) using a screwdriver, check the Valve Cap 'O' Ring (1D) for signs of deterioration, remove the Spring (1F), push out the Valve Stem (1G) and remove the valve seat 'O' Ring (1H). Check the Valve Stem (1G) and 'O' Ring (1H) for wear.

## ASSEMBLY

Before any assembly takes place, ensure all parts are clean and are coated in a thin film of recommended air tool lubricant. It is strongly recommended that all the O'Rings and any other worn parts be replaced using only genuine Trelawny spares.

## Valve Body Assembly

Clamp the Valve Body firmly in a vice, using the flats provided, and with the threaded hole uppermost.

Insert the valve seat 'O' Ring (1H) into Valve Body (1A), followed by the Valve Stem (1G), Spring (1F), then the Valve Cap (1E) complete with its 'O' Ring (1D), tighten the Valve Cap (1E) with a screwdriver.

Rotate assembly 180 degrees in the vice. Using a 3mm diameter pin punch locate and align the Throttle Lever (1B) in position, then drive in the Throttle Lever Roll Pin (1C) into the pin location.

## Piston and Cylinder Assembly

Fit new O'Rings (11)(12) to the Cylinder (10), Lubricate the Piston (9) and Cylinder bore, insert the Piston (9) into the Cylinder bore. Ensure that the threads on the Cylinder (10) and in the Cover are clean and dry. Clamp the Cylinder (8) in a vice using the flats provided. Then using a suitable wrench on the spanner flats provided, tighten the Cover onto the Cylinder (8) and torque to 135Nm (100lbs/ft). Refit the Chisel Holder/Needle Scaling Attachment as described previously.

## Chisel Holder

Before fitting the Chisel Holder (10), disconnect the tool from the air supply. To fit the Chisel Holder (10) ensure that the pinch bolt on the Chisel Holder is loose, screw the Chisel Holder fully on to the Cylinder (8). Turn the knurled collar on the Chisel Holder (10) until the retaining ball is fully visible. Insert a chisel into the Chisel Holder (10) and select the nearest position to align the blade with the Throttle Lever (1B). Turn the collar half a turn to lock the Chisel in place. If the Chisel does not line up, it may require the Chisel Holder (10) to be unscrewed slightly. Tighten the pinch bolt using a 6mm AF Allen key. To release the Chisel, rotate the knurled collar until the retaining ball is fully visible and remove the Chisel.

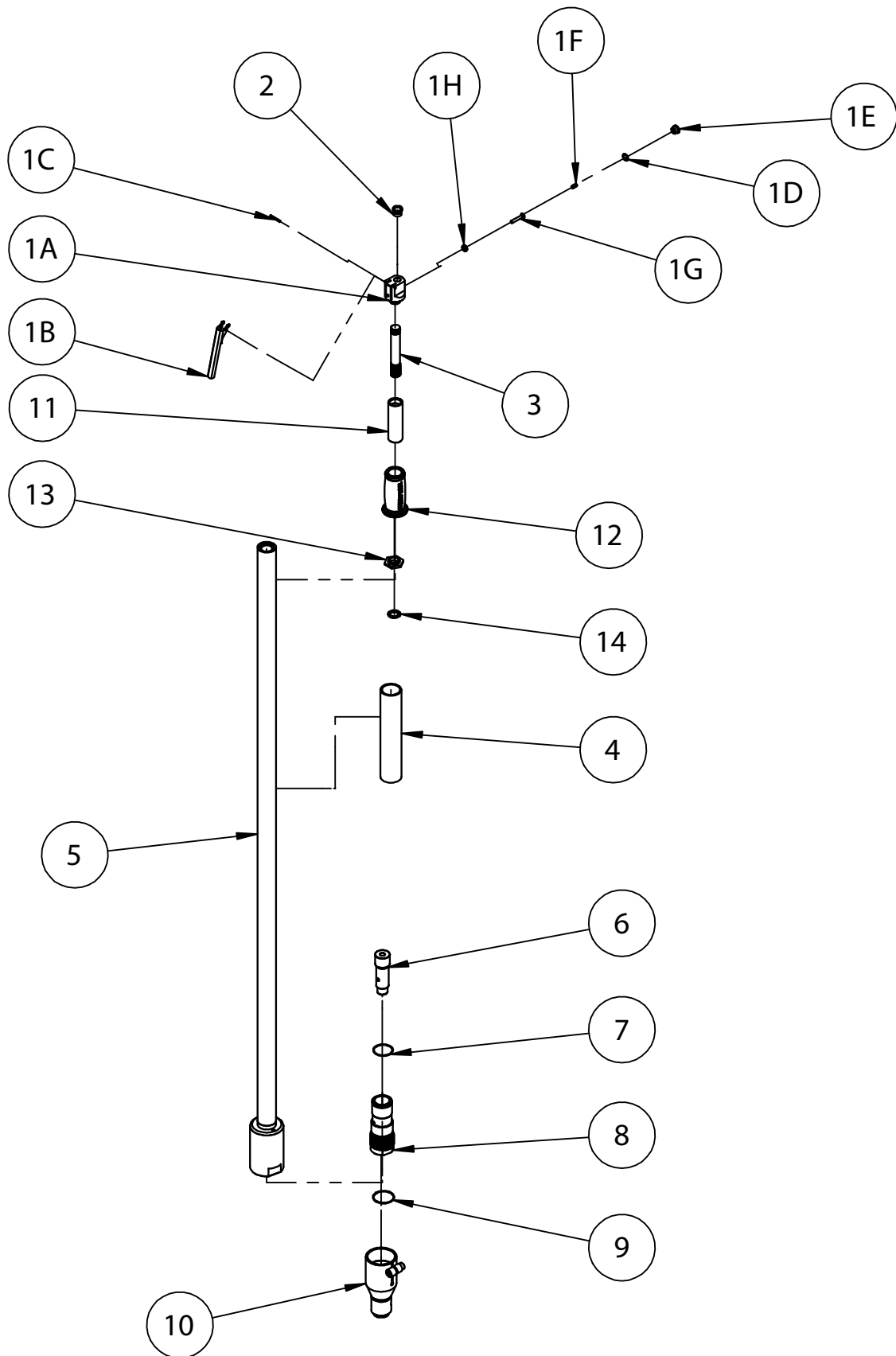
## Needle Holder Attachment

Before fitting the Needle Scaler Attachment, disconnect the air supply to the tool. Assemble the component parts of the Needle Scaler attachment in the following order; insert the Needles (18) into the Needle Holder (16), place the Spring (17) over the Needles, insert the Anvil (15) into the Needle Holder (16), then place the assembly into the Intermediate Tube (19). Check the service layout for clarification. Screw the assembly fully onto the Cylinder (8) and tighten the pinch bolt using a 6mm AF Allen key.

Slide the Front Tube (20) on to the Intermediate Tube (19) until approximately 25mm (1") of Needle protrudes from the Front Tube (20). Tighten the pinch bolt using a 6mm AF Allen key.

As the Needles wear, adjust the Front Tube by loosening the Allen Screw and adjusting the Front Tube so that approximately 1" (25mm) of Needle protrudes from the Front Tube (20) and then retighten the Allen Screw.

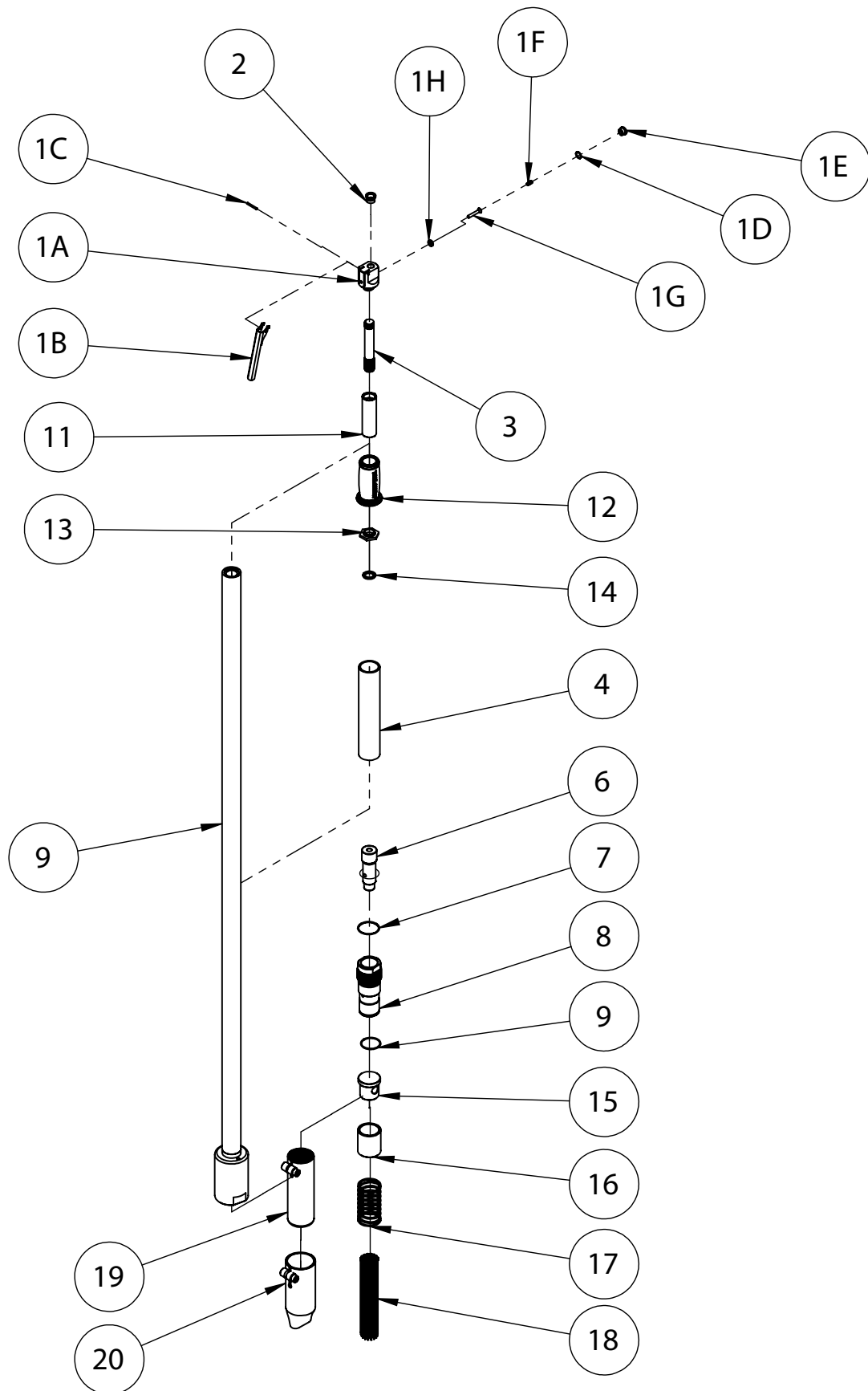
# EXPLODED VIEW - LR CHISEL SCALER



# PARTS LIST - LR CHISEL SCALER

ITEM NO.	PART NO.	DESCRIPTION	QUANTITY
1A	423.3021	BPG/LR/PG Valve Body Assembly	1
1B	716.3000	Throttle Lever	1
1C	813.0108	Spring Pin 1/8" x 1" Long	1
1D	809.0139	Valve Cap O'Ring	1
1E	615.3021	Valve Cap	1
1F	712.3022	Valve Spring	1
1G	618.3022	Valve Stem	1
1H	809.0089	Valve Seat O'Ring	1
2	818.0250	Plug 1/4" BSP - Red	1
3	623.3001	Tube Centre	1
4	717.3501	Handle Grip LR	1
5	425.3225	2ft Cover Assembly - Red	1
5	425.3425	4ft Cover Assembly - Red	1
5	425.3525	5ft Cover Assembly - Red	1
5	425.3625	6ft Cover Assembly - Red	1
6	612.3001	Piston 3BPG/LR	1
7	809.0299	O'Ring	1
8	613.3101	Cylinder 3BPG/LR	1
9	809.0289	O'Ring	1
10	419.3541	Chisel Holder 5/8" Hex.8TPI	1
11	624.3001	Tube Handle LR	1
12	717.3055	Grip - Trelawny Logo	1
13	625.3001	Locknut - LR Handle	1
14	810.9000	Sealing Washer 3/8" BSP	1
<b>ITEMS NOT SHOWN</b>			
N/A	859.1530	1/4" BSP Lubricator - Trelawny	1
N/A	815.5550	Whip-check (hose retaining)	1
N/A	458.1530	1/4" BSP Inline Oiler Assembly	1
N/A	705.1101	Chisel 5/8" Hex 9x1	1
N/A	705.1106	Chisel 5/8" Hex. 9x2	1
N/A	705.1102	Chisel 5/8" Hex. 8x4	1
N/A	705.2102	Chisel 5/8" Hex 4" cranked	1
N/A	705.1100	Chisel 5/8" Hex 9x2 Alu.Br	1
N/A	705.1112	Chisel 5/8" Hex 8x4 Alu-Br	1
N/A	708.1100	Comb Holder 5/8" Hex.	1
N/A	708.1101	Comb 1 1/2" Wide	1
N/A	431.3504	Scraper S/A 100mm 5/8"Hex	1
N/A	431.3504	Scraper S/A 100mm 5/8"Hex	1
N/A	431.3512	Scraper S/A 300mm 5/8 Hex	1
N/A	431.3908	Scraper S/A 200mm Bevelled	1
N/A	431.3912	Scraper S/A 300mm Bevelled	1
N/A	641.3512	Yoke L.R. Scraper	1

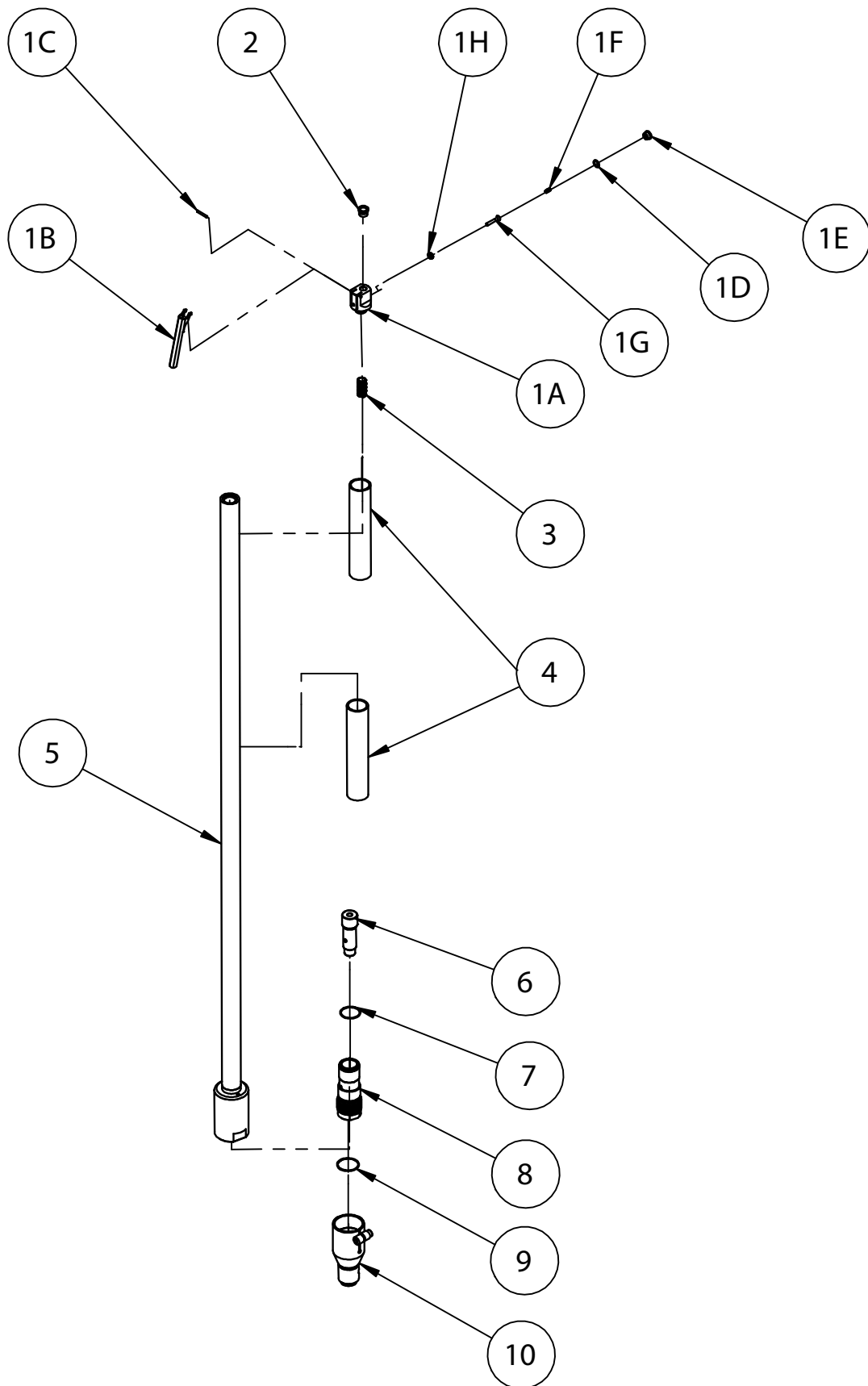
# EXPLODED VIEW - LR NEEDLE SCALER



# PARTS LIST - LR NEEDLE SCALER

ITEM NO.	PART NO.	DESCRIPTION	QUANTITY
1A	423.3021	BPG/LR/PG Valve Body Assembly	1
1B	716.3000	Throttle Lever	1
1C	813.0108	Spring Pin 1/8" x 1" Long	1
1D	809.0139	Valve Cap O'Ring	1
1E	615.3021	Valve Cap	1
1F	712.3022	Valve Spring	1
1G	618.3022	Valve Stem	1
1H	809.0089	Valve Seat O'Ring	1
2	818.0250	Plug 1/4" BSP - Red	1
3	623.3001	Tube Centre	1
4	717.3501	Handle Grip LR	1
5	425.3225	2ft Cover Assembly - Red	1
5	425.3425	4ft Cover Assembly - Red	1
5	425.3525	5ft Cover Assembly - Red	1
5	425.3625	6ft Cover Assembly - Red	1
6	612.3001	Piston 3BPG/LR	1
7	809.0299	O'Ring	1
8	613.3101	Cylinder 3BPG/LR	1
9	809.0289	O'Ring	1
11	624.3001	Tube Handle LR	1
12	717.3055	Grip - Trelawny Logo	1
13	625.3001	Locknut - LR Handle	1
14	810.9000	Sealing Washer 3/8" BSP	1
15	610.3001	Anvil 3BPG/LR	1
16	601.3003	Needle Holder 3mm 3BPG/LR	1
17	712.3001	Return Spring 3BPG/LR	1
18	603.2107	Needle 3mm Chisel	28
19	416.3132	Tube Intermediate 3BPG/LR	1
20	417.3032	Tube Straight Front 3BPG/LR	1
ITEMS NOT SHOWN			
N/A	859.1530	1/4" BSP Lubricator - Trelawny	1
N/A	815.5550	Whip-check (hose retaining)	1
N/A	458.1530	1/4" BSP Inline Oiler Assembly	1
N/A	453.1110	3mm Flat Needles x 100	1
N/A	453.2110	3mm Chisel Needles x 100	1
N/A	419.3541	Chisel Holder 5/8" Hex.8TPI	1

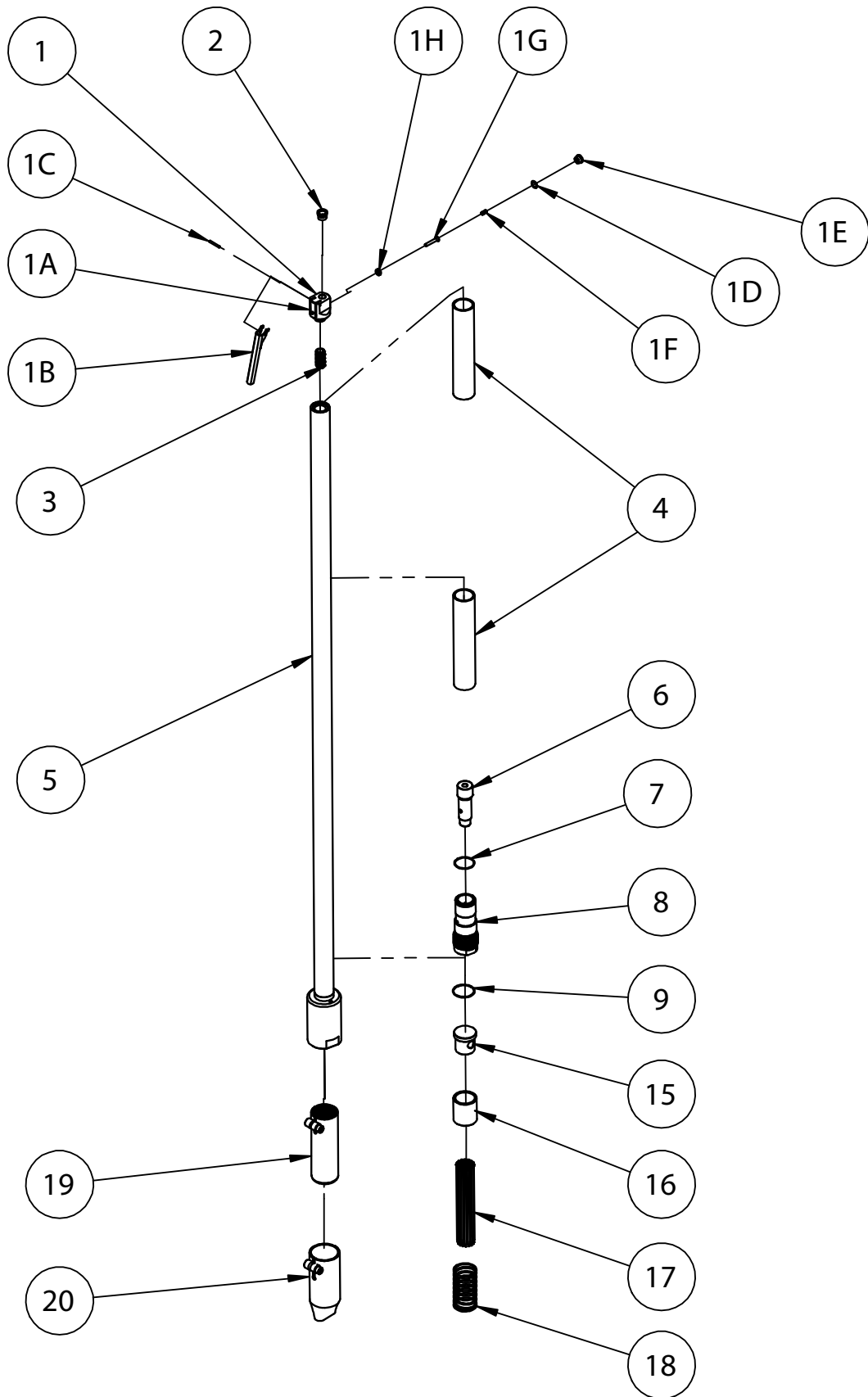
# EXPLODED VIEW - LR LITE CHISEL SCALER



# PARTS LIST - LR LITE CHISEL SCALER

ITEM NO.	PART NO.	DESCRIPTION	QUANTITY
1A	423.3021	BPG/LR/PG Valve Body Assembly	1
1B	716.3000	Throttle Lever	1
1C	813.0108	Spring Pin 1/8" x 1" Long	1
1D	809.0139	Valve Cap O'Ring	1
1E	615.3021	Valve Cap	1
1F	712.3022	Valve Spring	1
1G	618.3022	Valve Stem	1
1H	809.0089	Valve Seat O'Ring	1
2	818.0250	Plug 1/4" BSP - Red	1
3	627.3598	Adaptor - 3/8" BSP L.R.Lite	1
4	717.3501	Handle Grip LR	2
5	425.3498	4ft Lite Cover Assembly - Red	1
5	425.3598	5ft Lite Cover Assembly - Red	1
5	425.3698	6ft Lite Cover Assembly - Red	1
6	612.3001	Piston 3BPG/LR	1
7	809.0299	O'Ring	1
8	613.3101	Cylinder 3BPG/LR	1
9	809.0289	O'Ring	1
10	419.3541	Chisel Holder 5/8" Hex.8TPI	1
ITEMS NOT SHOWN			
N/A	859.1530	1/4" BSP Lubricator - Trelawny	1
N/A	815.5550	Whip-check (hose retaining)	1
N/A	458.1530	1/4" BSP Inline Oiler Assembly	1
N/A	705.1101	Chisel 5/8" Hex 9x1	1
N/A	705.1106	Chisel 5/8" Hex. 9x2	1
N/A	705.1102	Chisel 5/8" Hex. 8x4	1
N/A	705.2102	Chisel 5/8" Hex 4" cranked	1
N/A	705.1100	Chisel 5/8" Hex 9x2 Alu.Br	1
N/A	705.1112	Chisel 5/8" Hex 8x4 Alu-Br	1
N/A	708.1100	Comb Holder 5/8" Hex.	1
N/A	708.1101	Comb 1 1/2" Wide	1
N/A	431.3504	Scraper S/A 100mm 5/8"Hex	1
N/A	431.3504	Scraper S/A 100mm 5/8"Hex	1
N/A	431.3512	Scraper S/A 300mm 5/8 Hex	1
N/A	431.3908	Scraper S/A 200mm Bevelled	1
N/A	431.3912	Scraper S/A 300mm Bevelled	1
N/A	641.3512	Yoke L.R. Scraper	1

# EXPLODED VIEW - LR LITE NEEDLE SCALER



# PARTS LIST - LR LITE NEEDLE SCALER

ITEM NO.	PART NO.	DESCRIPTION	QUANTITY
1A	423.3021	BPG/LR/PG Valve Body Assembly	1
1B	716.3000	Throttle Lever	1
1C	813.0108	Spring Pin 1/8" x 1" Long	1
1D	809.0139	Valve Cap O'Ring	1
1E	615.3021	Valve Cap	1
1F	712.3022	Valve Spring	1
1G	618.3022	Valve Stem	1
1H	809.0089	Valve Seat O'Ring	1
2	818.0250	Plug 1/4" BSP - Red	1
3	627.3598	Adaptor - 3/8" BSP L.R.Lite	1
4	717.3501	Handle Grip LR	2
5	425.3498	4ft Lite Cover Assembly - Red	1
5	425.3598	5ft Lite Cover Assembly - Red	1
5	425.3698	6ft Lite Cover Assembly - Red	1
6	612.3001	Piston 3BPG/LR	1
7	809.0299	O'Ring	1
8	613.3101	Cylinder 3BPG/LR	1
9	809.0289	O'Ring	1
15	610.3001	Anvil 3BPG/LR	1
16	419.3541	Chisel Holder 5/8" Hex.8TPI	1
17	712.3001	Return Spring 3BPG/LR	1
18	603.2107	Needle 3mm Chisel	1
19	416.3032	Tube Intermediate 3B	1
20	417.3032	Tube Straight Front 3BPG/LR	1
ITEMS NOT SHOWN			
N/A	859.1530	1/4" BSP Lubricator - Trelawny	1
N/A	815.5550	Whip-check (hose retaining)	1
N/A	458.1530	1/4" BSP Inline Oiler Assembly	1
N/A	453.1110	3mm Flat Needles x 100	1
N/A	453.2110	3mm Chisel Needles x 100	1
N/A	419.3541	Chisel Holder 5/8" Hex.8TPI	1

## TECHNICAL SPECIFICATIONS

DETAIL	LR 2ft	LR 4ft	LR 5ft	LR 6ft	LR Lite 4ft	LR Lite 5ft	LR Lite 6ft
Part Code	136.3200	136.3400	136.3500	136.3600	136.3498	136.3598	136.3698
Description	2ft Chisel	4ft Chisel	5ft Chisel	6ft Chisel	4ft Lite Chisel	5ft Lite Chisel	6ft Lite Chisel
Piston Diameter	28.6mm	28.6mm	28.6mm	28.6mm	28.6mm	28.6mm	28.6mm
Piston Stroke (approx)	39mm	39mm	39mm	39mm	39mm	39mm	39mm
Blows per minute	2,200	2,200	2,200	2,200	2,200	2,200	2,200
Air Consumption	2.1lps (4.5cfm)	2.1lps (4.5cfm)	2.1lps (4.5cfm)	2.1lps (4.5cfm)	2.1lps (4.5cfm)	2.1lps (4.5cfm)	2.1lps (4.5cfm)
Air Pressure	6.2 bar (90 psi)	6.2 bar (90 psi)	6.2 bar (90 psi)	6.2 bar (90 psi)	6.2 bar (90 psi)	6.2 bar (90 psi)	6.2 bar (90 psi)
Air Inlet	1/4" BSP	1/4" BSP	1/4" BSP	1/4" BSP	1/4" BSP	1/4" BSP	1/4" BSP
Overall Length	740mm	1100mm	1400mm	1710mm	1100mm	1400mm	1710mm
Weight	4.8kg	5.7kg	6.25kg	6.9kg	3.7kg	4.05kg	4.55kg
Noise L <sub>PA</sub> db(A)	81.3	80.5	82.4	84.3	85.8	81.2	84.2
Noise L <sub>WA</sub> dB(A)	94.3	93.5	95.9	-	104.7	-	-
Vibration (AEQ) H1* (k)**	4.1	8.9	11.4	7.7	13.0	10.3	10.4
Vibration (AEQ) H2* (k)**	5.4	9.5	10.1	9.8	13.2	10.8	11.6

Trelawny SPT Ltd operates a policy of continuous product development and refinement and therefore reserves the right to change technical specifications and product designs without giving prior notice.

H1\* Indicates that the test was taken at the primary hand-grip location, next to the throttle lever.

H2\* Indicates that the test was taken at the secondary hand-grip position.

DETAIL	LR 2ft	LR 4ft	LR 5ft	LR 6ft	LR Lite 4ft	LR Lite 5ft	LR Lite 6ft
Part Code	137.3200	137.3400	137.3500	137.3600	137.3498	137.3598	137.3698
Description	2ft Needle	4ft Needle	5ft Needle	6ft Needle	4ft Lite Needle	5ft Lite Needle	6ft Lite Needle
Piston Diameter	28.6mm	28.6mm	28.6mm	28.6mm	28.6mm	28.6mm	28.6mm
Piston Stroke (approx)	39mm	39mm	39mm	39mm	39mm	39mm	39mm
Blows per minute	2,200	2,200	2,200	2,200	2,200	2,200	2,200
Air Consumption	2.1lps (4.5cfm)	2.1lps (4.5cfm)	2.1lps (4.5cfm)	2.1lps (4.5cfm)	2.1lps (4.5cfm)	2.1lps (4.5cfm)	2.1lps (4.5cfm)
Air Pressure	6.2 bar (90 psi)	6.2 bar (90 psi)	6.2 bar (90 psi)	6.2 bar (90 psi)	6.2 bar (90 psi)	6.2 bar (90 psi)	6.2 bar (90 psi)
Air Inlet	1/4" BSP	1/4" BSP	1/4" BSP	1/4" BSP	1/4" BSP	1/4" BSP	1/4" BSP
Overall Length	740mm	1100mm	1400mm	1710mm	1100mm	1400mm	1710mm
Weight	4.8kg	5.7kg	6.25kg	6.9kg	3.7kg	4.05kg	4.55kg
Noise L <sub>PA</sub> db(A)	103.1	103.5	103.0	103.5	104.7	104.5	104.5
Noise L <sub>WA</sub> dB(A)	116.1	117.7	116.0	116.5	116.5	117.5	116.5
Vibration (AEQ) H1* (k)**	15.3	11.7	12.3	12.5	25.1	19.3	16.2
Vibration (AEQ) H2* (k)**	12.9	12.2	11.8	12.2	19.2	18.7	18.8

Trelawny SPT Ltd operates a policy of continuous product development and refinement and therefore reserves the right to change technical specifications and product designs without giving prior notice.

H1\* Indicates that the test was taken at the primary hand-grip location, next to the throttle lever.

H2\* Indicates that the test was taken at the secondary hand-grip position.

# TECHNICAL SPECIFICATIONS

Noise Levels measured in accordance with:  
EN ISO 15744: 2008  
Vibration levels measured in accordance with:  
EN ISO 28927-9:2012 and EN ISO 20643:2005

(k) \*\* Equals the factor of uncertainty, which allows for variations in measurement and production. Vibration Data figures are tri-axial, which gives the total vibration emission. Because of various factors, the range of vibration emission during intended use can vary. The vibration is dependent on the task, the operators grip, and feed force employed etc. NOTE: The above vibration levels were obtained from tri-axial measurements to comply with the requirements of "The Control of Vibration at Work Regulations 2005\*" and the revisions to the (8662) now EN ISO 28927:2012 and EN ISO 20643:2005 series of standards. These values are at least 1.4 times larger than the values obtained from single axis measurements.

\*Based on European Union Council Directive 2002/44/EC (Physical Agents (Vibration) Directive)

This equipment has been designed and produced in accordance with the following directive:  
2006/42/EC Machinery Directive  
and applicable harmonised standard; EN ISO 1 1148-4:2012

If your company has any problem with our products or would like to discuss the possibility of an improvement being made to them, then please do not hesitate to contact us. Your comments are both important and appreciated.

Trelawny tools are thoroughly tested under specified conditions in accordance with applicable internationally recognised standards. When a tool is used on site the conditions may not be the same as those used in our tests.

Trelawny Surface Preparation Technology operates a policy of continuous product development and refinement and therefore reserves the right to change technical specifications and product designs without giving prior notice.

All rights reserved. Any unauthorised use or copying of the contents or part thereof is prohibited. This applies to trademarks, model denominations, part numbers and drawings.

**Use only genuine Trelawny consumables with this product. The use of non-Trelawny spare parts invalidates the warranty.**

# TROUBLE SHOOTING

FAULT	POSSIBLE CAUSE	ACTION
Poor performance or lack of power	Low air pressure	Ensure that the air pressure is correct at 90psi, max 100psi.
	If tool has been left for some time without use, the oil may dry out slightly, causing a sticky residue.	Strip tool down, clean and re-oil.
	Can you feel side ways movement between the piston and cylinder bore?	Replace the piston and cylinder
	Applying too much down-force	Only apply sufficient down force to stop the tool from bouncing
Tool continues to run with trigger released	Valve seal may have become dislodged through the tool being disconnected with the trigger in the open position.	Ensure that the trigger has not been taped or wired in the open position. Do not use quick release couplings to switch tool off.
If the problem has not been cured by any of the above actions, contact your local dealership or agent for assistance.		

# NOTES

---



---



---

THE PERFECT FINISH  
STARTS WITH  
TRELAWNY



## DEALER STAMP:



## CONTACT US

### Trelawny SPT Limited

Trelawny House, 13 Highdown Road, Sydenham Industrial Estate,  
Leamington Spa, Warwickshire, CV31 1XT, United Kingdom

**Telephone:** +44 (0)1926 883781

**Email:** [sales@trelawny.com](mailto:sales@trelawny.com)

**Website:** [www.trelawny.com](http://www.trelawny.com)

**Manual Part Number:**

**735.3500 01**

CERTIFIED  
**ISO 9001**



0008