

# TFS230 FLOOR STRIPPER

## OPERATION & MAINTENANCE MANUAL



## CONTENTS

INTRODUCTION .....	3
GENERAL INFORMATION .....	3
CE DECLARATION OF CONFORMITY .....	4
UKCA DECLARATION OF CONFORMITY .....	5
DECLARATION OF CONFORMITY .....	6
HAND ARM VIBRATION .....	7
WARRANTY .....	7
GENERAL SAFETY .....	7
ASSEMBLY INSTRUCTIONS .....	8
HANDLE ADJUSTMENT .....	8
BLADE SET UP .....	9
BLADE ANGLE ADJUSTMENT .....	9
PRE START CHECKS (DAILY) .....	10
STARTING - ELECTRIC MOTORS .....	10
OPERATION .....	11
SERVICING & MAINTENANCE .....	11
MACHINE STORAGE .....	12
MAINTENANCE SCHEDULE .....	12
PPE & WARNING SYMBOLS .....	12
TROUBLESHOOTING .....	13
EXPLODED VIEW - TFS230 .....	14
PARTS LIST - TFS230 .....	15
WIRING - 110v MACHINES .....	16
WIRING - 230v MACHINES .....	16
TECHNICAL SPECIFICATIONS .....	17
NOTES .....	18
NOTES .....	19
CONTACT US .....	20

# INTRODUCTION

Thank you for choosing a product by Trelawny SPT Ltd, an innovative leading brand in the Surface Preparation sector.

This product has been manufactured under stringent quality standards to meet superior performance criteria. This manual contains the necessary maintenance information for you to ensure proper operation and care for this equipment.

In the unlikely event that you experience a problem please do not hesitate to contact your local Trelawny dealer or agent. We always welcome feedback and comments from our valued customers.



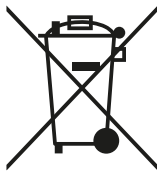
## WARNING:

Carefully read through these original instructions before using your new TRELAWNY Equipment. Take special care to read warnings. TRELAWNY products have many features that will make your job faster and easier. Safety, performance, and dependability have been given top priority in the development of this product, making it easy to operate and maintain.



## ENVIRONMENTAL PROTECTION:

The equipment, accessories and packaging should be sorted for environmentally friendly recycling. The plastic components are labelled for categorised recycling.



## DISPOSAL:

Waste products should not be disposed of with household waste. Please recycle where facilities exist. Check with your local authority or retailer for recycling advice.

# GENERAL INFORMATION

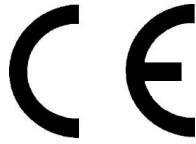
Before operating any TRELAWNY equipment, this manual must be read and understood by the operator, if in any doubt ask your supervisor before using this equipment. Failure to follow these instructions could result in damage to the equipment and/or personal injury.

Trelawny SPT Ltd disclaims all responsibility for damage to persons or objects arising as a consequence of incorrect handling of the equipment, failure to inspect the equipment

prior to starting work for damage or other faults that may influence the operation of safe working of the equipment, or failure to follow the safety regulations listed or applicable to the job site.

Operators should be familiar with the data given in the specification section. Please keep these instructions in a safe and accessible place.

# CE DECLARATION OF CONFORMITY



## EU Declaration of Conformity

We, Trelawny SPT Ltd of 13 Highdown Road, Sydenham Industrial Estate, Leamington Spa, Warwickshire, CV31 1XT, GB declare that the DoC is issued under our sole responsibility and belongs to the following product:

PART NUMBER .....  
DESCRIPTION .....  
SERIAL NUMBER .....  
YEAR OF CONSTRUCTION .....



The object of the declaration described above is in conformity with the relevant **Union Harmonisation Legislation:**

- 2006/42/EC Machinery Directive
- 2014/30/EU EMC Directive
- 2014/35/EU Low Voltage Directive
- 2011/65/EU Restriction of Hazardous Substances Directive

The following harmonised standards and technical specifications have been applied:

- EN ISO 12100:2010 Safety of machinery
- EN 60204-1:2018 Safety of machinery. Electrical equipment of machines - General requirements
- EN ISO 4871:2009 Acoustics. Declaration and verification of noise emission values of machinery and equipment

Technical files are held by Indutrade Benelux BV, Anton Philipsweg 1, 1422 AL Uithoorn, Netherlands

**Notified Body:**  
Not Applicable. Machinery is not listed under ANNEX IV of the Machinery Directive.

**Place of Declaration:**  
Trelawny SPT Ltd, 13 Highdown Road, Sydenham Industrial Estate, Leamington Spa, Warwickshire, CV31 1XT, GB

**Date of Declaration:**  
December 2024

**Signed by:**

Daniel Rowledge  
Managing Director

# UKCA DECLARATION OF CONFORMITY



## UKCA Declaration of Conformity

We, **Trelawny SPT Ltd of 13 Highdown Road, Sydenham Industrial Estate, Leamington Spa, Warwickshire, CV31 1XT, GB** declare that the DoC is issued under our sole responsibility and belongs to the following product:

PART NUMBER .....

DESCRIPTION .....

SERIAL NUMBER .....

YEAR OF CONSTRUCTION .....

The object of the declaration described above is in conformity with the relevant **Statutory Requirements**:

- **2008 No. 1597** Supply of Machinery (Safety) Regulations 2008
- **2016 No. 1091** Electromagnetic Compatibility Regulations 2016
- **2016 No. 1101** The Electrical Equipment (Safety) Regulations 2016
- **2012 No. 3032** The Restriction of the Use of Certain Hazardous Substances in Electrical and Electronic Equipment Regulations 2012

The following designated standards and technical specifications have been applied:

- **BS EN ISO 12100:2010** Safety of machinery
- **BS EN 60204-1:2018** Safety of machinery. Electrical equipment of machines - General requirements
- **BS EN ISO 4871:2009** Acoustics. Declaration and verification of noise emission values of machinery and equipment

Technical files are held by **Daniel Rowledge** at the Trelawny address stated above.

**Approved Body:**

Not Applicable. Machinery is not listed under ANNEX IV of the Supply of Machinery (Safety) Regulations 2008

**Place of Declaration:**

Trelawny SPT Ltd, 13 Highdown Road, Sydenham Industrial Estate, Leamington Spa, Warwickshire, CV31 1XT, GB

**Date of Declaration:**

December 2024

**Signed by:**

Daniel Rowledge  
Managing Director

## DECLARATION OF CONFORMITY

<p><b>CZ</b> Prohlášení o přizpůsobení          My, společnost Trelawny SPT Limited          podávamej daňové přiznání, že výrobek a dodávka výrobku          název výrobku          Model, výrobní číslo          Rok výroby          Pro které se průkaz týkající, je přizpůsobení s zásobou od následující příkazov a jejich pohotovostní:          2006/42/EC Příkaz soustrojí          2014/35/EC Příkaz nízkého napětí (upotřebitelné jedině do výrobku použité elektrické energie)</p>	<p><b>LT</b> ATITIKTIES DEKLARACIJA          Mes, Trelawny SPT Limited          Prisiidami visą atsakomybę deklaruojame, kad tiekiamas / gaminamas produktas          Produkto pavadinimas          Modelis, serijos numeris          Pagaminimo          Kuriam laikoma ši deklaracija, atitinka šių direktyvų, norminių aktų ir su jais susijusių, standartų reikalavimus:          2006/42/EC Įtango direktyva          2014/35/EC Žemos įtampos direktyva (laikoma tik elektriniams įrengimams)</p>
<p><b>DE</b> Übereinstimmungserklärung          Wir, Trelawny SPT Limited          erklären, dass unter unserer alleinigen Verantwortung für die Lieferung und Herstellung des Produktes          Name des Produktes          Model, Seriennummer          Jahr der Herstellung          auf welches sich dieses Dokument bezieht, stimmt mit den Vorgaben der folgenden Direktive, normativen Dokumente und deren          jeweiligen Maßstäbe ein:          2006/42/EC Maschineriedirektive          2014/35/EC Niederspannungsrichtlinie (nur zutreffend auf Produkte, die Strom benutzen)</p>	<p><b>MT</b> DIKJARAZZJONI TA KONFORMITÀ          Ahna, Trelawny SPT Limited          Niddikjaraw li ahna responsabbli kompletament għal provista / maniffattura tal-prodott hawn 1msemmi:          Isem Il-Prodott          Mudell, Serial number          Sena li 'produzzjoni          Dan id-dokument magħmul għal prodott imsemmi hawn fuq, li huwa skond il-provizjonijiet imsemmija fid-dokumenti tal-klassi tax-xogħol:          2006/42/EC Machinery Directive          2014/35/EC Low Voltage Directive (tapplika biss għal prodotti li jahdmu bi-elekttriku)</p>
<p><b>DK</b> Erklæring om overensstemmelse          Vi, Trelawny SPT Limited          Erklærer hermed at under vores ene forhandling ansvar for vores forhandling/produktion af produktet          Produkt navn          Model, serie nummer          Produktionsår          For hvilket dette dokument referer, at deler i overensstemmelse med bestemmelser af følgende direktiver, normative dokumenter og deres relevante standard:          2006/42/EC Machinery directive          2014/35/EC Low voltage directive</p>	<p><b>NL</b> EENVORMIGHEIDSVERKLARING          Wij, Trelawny SPT Limited          Verklaaren dat wij de volledige verantwoordelijkheid dragen voor het leveren/fabriceren van het volgende product:          Naam van het product          Type, Serienummer          Productiejaar          En verklaaren dat het product waarnaar dit document verwijst eenvoudig is met de voorzieningen van de volgende Richtlijn(en). Normatieve Documenten en hun relevante Standaarden:          2006/42/EC MACHINERIECHTLIJN          2014/35/EC LAAGSPANNINGSRICHTLIJN (uitsluitend van toepassing bij producten die elektrische stroom gebruiken)</p>
<p><b>EE</b> TOOTE VASTAVUSE DEKLARATSIOON          Meie, Trelawny SPT Limited          Deklareerime, et vastutame järgmise varustuse/toote müügi eest          Toote nimetus          Mudel, Seeria number          Aegseda tootmisajaku          Arvutud dokument käsitleb toote vastavust järgmistele direktiivide/le, normatiividele ja nendega samaväärsetele standarditele:          2006/42/EC MASINIA DIREKTIIVID          2014/35/EC MADALPINGE DIREKTIIVID (Kohandatakse vaid tootetele, mis kasutavad elektrivoolu)</p>	<p><b>PL</b> Deklaracja Zgodności          My, Firma Trelawny SPT Limited.          oświadczamy w naszej odpowiedzialności, że produkcja i dostawa urzadzzenia          Nazwa produktu          Model, numer seryjny          Rok produkcji          do którego ten dokument należy, jest zgodne z klauzulami następujących zarządzeń i ich istotnych standardów:          2006/42/EC Zarządzenie mechaniczne          2014/35/EC Zarządzenie niskiego napięcia elektrycznego (Zastosowanie tylko przy urządzeniach elektrycznych)</p>
<p><b>ES</b> Declaración de Conformidad          Nosotros, Trelawny SPT Limited          Declaramos que bajo nuestra completa responsabilidad de la fabricación/suministro del producto          Nombre del Producto          Modelo, No de Serie          Año de producción          A quien este documento se refiere, está de acuerdo con lo relacionado en la Directriz, Normativa Documentada y sus relevantes          standards:          2006/42/EC Directorio de Maquinaria          2014/35/EC Directorio de Bajo Voltaje (Aplicable solamente a productos que funcionen con electricidad)</p>	<p><b>PT</b> DECLARAÇÃO DE CONFORMIDADE CE          A empresa TRELAWNY SPT LIMITED          Declara, sob sua inteira responsabilidade, que o fornecimento/fabrico do seguinte produto:          Designação do produto          Modelo, Número de Série          Ano de produção          a que esta declaração se refere, está em conformidade com o preceituado nas Directivas e Normas Comunitárias abaixo indicadas:          2006/42/EC DIRECTIVA DE MÁQUINAS          2014/35/EC DIRECTIVA DE BAIXA VOLTAGEM (Aplicável apenas a produtos que utilizam energia eléctrica)</p>
<p><b>FI</b> ILMOITUSVAHVISTUS          Me, Trelawny SPT Limited          Valmistamme tuotteen toimittamisesta/valmistamisesta          Tuotteen nimi          Malli, sarjanumero          Valmistusvuosi          Täällä todistuksella vahvistamme säädökset seuravien ohje/ohjesien, Yleisin papereihin ja niihin liittyvät vaatimukset:          2006/42/EC KONEISTON OHJEET          2014/35/EC PIENJÄNNITTE OHJEET (tarvitaan ainoastaan tuotteille jotka käyttävät sähkövoimaa)</p>	<p><b>RU</b> СВИДЕТЕЛЬСТВО О СООТВЕТСТВИИ          Мы, Trelawny SPT Limited          Заявляем, что несем полную ответственность за поставку/производство нижеуказанной продукции          Наименование изделия          Модель, серийный номер          Год выпуска          на которую выдано настоящее Свидетельство, и которая соответствует положениям следующей(их) директиве(ы), нормативным документам и относящимся к ним стандартам:          2006/42/EC ДИРЕКТИВА ПО МЕХАНИЗМАМ          2014/35/EC ДИРЕКТИВА ПО НИЗКОВОЛЬТНОМУ ОБОРУДОВАНИЮ (распространяется только на изделия с электропитанием)</p>
<p><b>FR</b> DÉCLARATION DE CONFORMITÉ          Nous, soussignés Trelawny SPT Limited          déclarons que le produit sous-nommé          Nom du produit          Modèle et Numéro de Série          Année de production          et pour lequel nous prenons entière responsabilité pour sa fourniture et manufacture, est conforme aux clauses des directives          suivantes documents normatifs et normes qui s'y appliquent:          2006/42/EC DIRECTIVE POUR LA MACHINERIE          2014/35/EC DIRECTIVE POUR BAS VOLTAGE (n'est applicable qu'aux produits utilisant l'énergie électrique)</p>	<p><b>SE</b> FÖRSÄKRAN OM ÖVERENSSTÄMMELSE          VI, TRELAWNY SPT LIMITED          FÖRKLARAR ATT VI MED ENSAMT ANSVAR ANSKAFFAT / TILLVERKAT PRODUKTEN PRODUKTNAMN          MODELL och SERIE NUMMER          Tillverkningsår          TILL VILKEN DETTA DOKUMENT HÄNVISAR ÄR I ÖVERENSSTÄMMELSE MED FÖLJANDE DIREKTIV, NORMATIVA          DOKUMENT OCH DERAS RELEVANTA STANDARDER          2006/42/EC MASKINDIREKTIV          2014/35/EC LÅGSTRÖMSDIREKTIV (TILLÄMPLIG PÅ ELEKTRISK DRIVNA PRODUKTER)</p>
<p><b>GR</b> ΔΗΛΩΣΗ ΠΙΣΤΟΤΗΤΑΣ          Η εταιρεία Trelawny Spt Limited          Δηλώνει ότι έχει τη μοναδική ευθύνη ως κατασκευαστρια / προμηθευτρια του παρακάτω προϊόντος περιγραφη προϊόντος          μοντέλο, αριθμός σειράς          έτος παραγωγής          και στο οποίο αναφέρεται αυτή η δήλωση, είναι συμβατό με τις προδιαγραφές που ορίζονται στις ακόλουθες Κοινοτικές          Οδηγίες Ελεγκτικές Διατάξεις κι άλλες σχετικές προδιαγραφές          2006/42/EC ΟΔΗΓΙΑ ΠΕΡΙ ΜΗΧΑΝΗΜΑΤΩΝ          2014/35/EC ΟΔΗΓΙΑ ΠΕΡΙ ΧΑΜΗΛΗΣ ΤΑΣΗΣ (αφορά μόνον προϊόντα που λειτουργούν με ηλεκτρικό ρεύμα)</p>	<p><b>SI</b> IZJAVA O SKLADNOSTI          Trelawny SPT Limited          pod polno odgovornostjo izjavljamo, da so spodaj navedeni proizvodi, ki jih dobavljamo/producirajamo:          Ime proizvoda          Model, serijska številka          Leto proizvodnje          na katere se ta dokument nanaša, proizvedeni v skladu z določili naslednjih direktiv, normativnih dokumentov in njihovih relevant-          nih standardov:          2006/42/EC DIREKTIVA O STROJIH          2014/35/EC DIREKTIVA O STROJIH Z NIZKO VOLTAŽO (nanaša se samo na proizvode na električni pogon)</p>
<p><b>HU</b> MEGFELELŐSÉGI NYILATKOZAT          Mi, A "Trelawny SPT Limited" cég          Felelősségünk tudatában kijelentjük, hogy mint a termék szállítója/gyártója          Termék neve          Típus, Sorozatszám          Gyártási év          amelyre jelen dokumentum vonatkozik, megfelel az alábbi Irányelv(ek), Irányadó Dokumentumok előírásainak, és az azokat          meghatározó szabványoknak:          2006/42/EC GÉPÉSZETI IRÁNYELVEK          2014/35/EC KISFESZÜLTÉSŰ IRÁNYELVEK (Csak az elektromos meghajtású gépeknél)</p>	<p><b>TR</b> UYGUNLUK BEYANI          Trelawny SPT Limited          Aşağıdaki, üretim ve tedarikinden tek başına sorumlu olduu ürünün          Ürün adı          Model/Seri no          Üretim yılı          bu belgenin ilgili olduu apaşğıdaki yönetmeliklerin, norm belgelerinin ve ilgili standartları'nın koşullarına uygun olduunu beyan          eder:          2006/42/EC MAKİNALAR YÖNETMELİDİ          2014/35/EC DÜPÜK GERİLİM YÖNETMELİDİ (Yalnızca elektrikle çalıyan ürünlerde geçerlidir)</p>
<p><b>IT</b> DICHIARAZIONE DI CONFORMITÀ          La Società Trelawny SPT Limited          Dichiaro, sotto la propria responsabilità, che la fornitura / produzione del prodotto          Nome prodotto          Modello, codice          Anno di produzione          a cui si riferisce tale documento è conforme alle seguenti Direttive, ai documenti della Normativa ed ai relativi standard:          2006/42/EC DIRETTIVA SULLE APPARECCHIATURE          2014/35/EC DIRETTIVA SUL BASSO VOLTAGGIO (applicabile esclusivamente per i prodotti che utilizzano energia elettrica)</p>	

## HAND ARM VIBRATION

Trelawny Equipment may cause hand-arm Vibration Syndrome injury if their use is not adequately managed.

We advise you to carry out a risk assessment and to implement measures such as; limiting exposure time [i.e. actual trigger time, not total time at work], job rotation, ensuring the tools are used correctly, ensuring the tools are maintained according to our recommendations, and ensuring that the operators wear personal protective equipment (PPE) particularly gloves and clothing to keep them warm and dry.

Employers should consider setting up a programme of health surveillance to establish a benchmark for each operator and to detect early symptoms of vibration injury.

We are not aware of any PPE that provides protection against vibration injury by attenuating vibration emissions.

**See 'Specifications' section for vibration emission data.**

Further advice is available from our Technical Department.

We strongly advise you to visit the Health & Safety Executive website <http://www.hse.gov.uk/vibration> - this site provides excellent advice and information on HAV and currently, includes a Hand-Arm Vibration Exposure Calculator that is easy to use to work out the daily vibration exposure for each of your operators.

## WARRANTY

When you choose TRELAWNY, you're investing in a product engineered for strength, durability, and unwavering reliability. Our equipment is built to endure the toughest challenges, showcasing over 80 years of craftsmanship in Surface Preparation Technology. We take pride in being the industry benchmark, offering not just a tool but a lasting companion for tough jobs, backed by a 12-month warranty for peace of mind.

Register your TRELAWNY product within 30 days of purchase by scanning the QR code to activate your warranty and enjoy the full support from our team.

**PLEASE RETAIN YOUR PROOF OF PURCHASE, AS IT WILL BE REQUIRED TO PROCESS ANY WARRANTY CLAIMS.**

The following are not covered under the Trelawny warranty:

- Damage caused by abuse, misuse, dropping or other similar damage caused by or as a result of failure to follow assembly, operation or user maintenance instructions.
- Alterations, additions or repairs carried out by persons other than Trelawny or their recognised agents.

- Transportation costs to and from Trelawny or their recognised agents, for repair or assessment against a warranty claim, on any equipment.
- Materials and/or labour costs to renew, repair or replace components due to fair wear and tear.

In no case whatsoever shall the Customer be entitled to claim damages, in particular but not be limited, loss of profit and other direct or indirect or consequential damage. This exclusion of liability, however, does not apply to unlawful intent or gross negligence on our part, but does apply to unlawful intent or gross negligence of persons employed or appointed by us to perform any of his obligations.



All warranty claims should firstly be directed to Trelawny SPT Ltd. Please provide, part number, serial number and proof of purchase, either by telephone or E-mail.

Tel: +44 (0)1926 883781

Email : [warranty@trelawny.com](mailto:warranty@trelawny.com)

## GENERAL SAFETY

### DO:

- Wear personal protective equipment including safety goggles, footwear, ear defenders and gloves. In some environments it will be necessary to wear facemasks or breathing apparatus.
- Be aware that this equipment can create dust and flying debris.
- Keep hands, feet and clothing away from moving parts.
- Follow the prestart checks detailed in this manual.
- Ensure that the workplace is well ventilated.
- Be aware of others working around you.
- Always follow safe-working practices.
- Inspect the equipment prior to using.
- Store this equipment in a secure and dry environment.

### DO NOT:

- Modify this equipment in any way. This will invalidate the warranty and could lead to serious injury.
- Allow the equipment to run unattended.
- Use petrol (gasoline), thinners or any other high flash point solvent to clean the equipment.
- Disassemble or repair unless Trelawny trained.
- Permanently fix the operating lever or button in the on/run position.

## ASSEMBLY INSTRUCTIONS

### There are three main parts:

- Main body (1)
- Lower handle (2)
- Upper handle (3)

### STEP 1

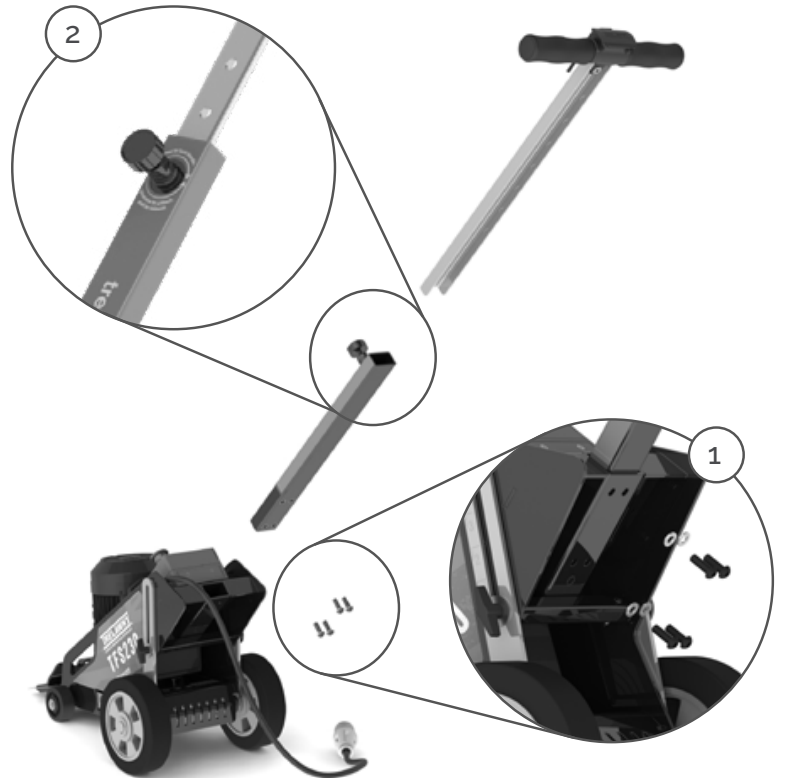
- Fit lower handle to main body with 4 bolts and washers. Fit all four bolts loosely first, then tighten fully.

### STEP 2

- Pull the knob on lower handle and slide upper handle into lower handle tube.

### STEP 3

- Secure by turning knob until upper handle is securely clamped in place.



## HANDLE ADJUSTMENT

The handle has 7 height options for increased operator comfort.

### STEP 1

- Loosen the handle knob by turning anti-clockwise.

### STEP 2

- Pull handle knob towards you to release the retaining pin.

### STEP 3

- Set the handle height to a desired height.

### STEP 4

- Release handle knob, ensure the locking pin engages in one of the holes within the handle

### STEP 5

- Secure the knob by turning clockwise. Do not over-tighten.



# BLADE SET UP

A 5mm Allen key is supplied with the machine to enable quick changing of the blade.

## STEP 1

- Ensure machine is switched off and isolated from power supply.

## STEP 2

- Loosen the three Allen screws on top of the blade holder.

## STEP 3

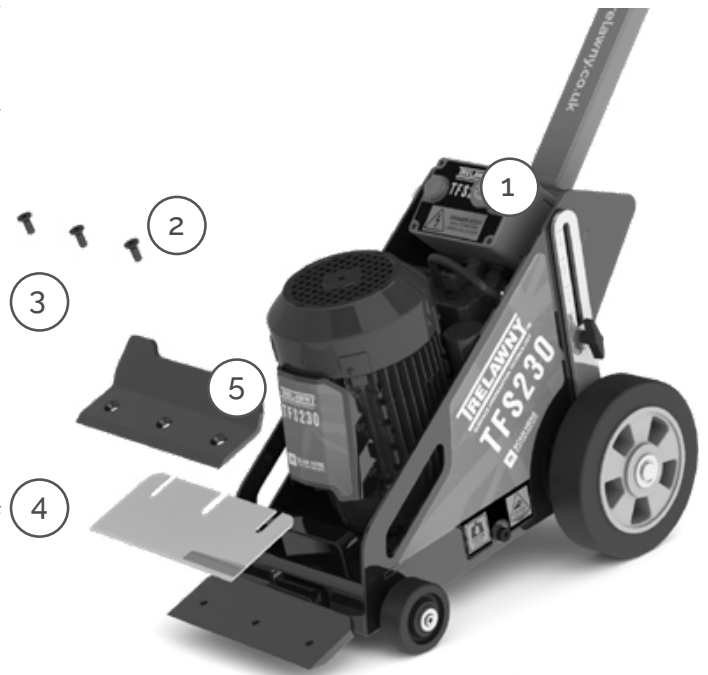
- Slide the blade in-between the blade holder plates. Ensure the blade is pushed all the way back

## STEP 4

- Secure the blade in place by tightening the three Allen screws. Do not over tighten. Use the Allen key provided.

**BLADE SETTING:** Set the blade with the bevel facing upwards if using the machine on a concrete surface.

**BLADE SETTING:** Set the blade with the bevel facing downwards if using the machine on a wooden surface.



# BLADE ANGLE ADJUSTMENT

The Blade 'angle of attack' can be easily adjusted to suit the material being removed.

## STEP 1

- Loosen (do not remove) the T-handle on the left side of the machine, located above the back left hand wheel.

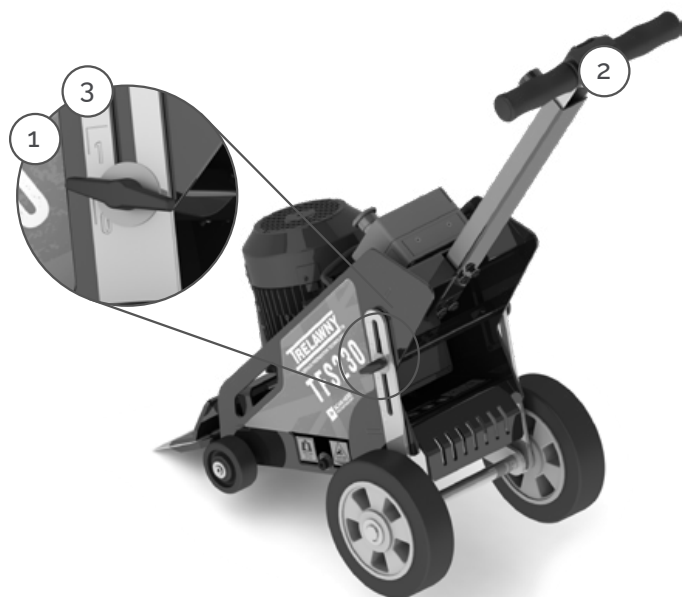
## STEP 2

- Lift handle upwards (rear wheels should remain on the ground).

## STEP 3

- When you reach the required angle tighten the T-handle firmly.

**NOTE:** Use the minimum angle required for your flooring material/application.



## PRE START CHECKS (DAILY)

- Thoroughly inspect the machine for signs of damage.
- Check all bolts and screws for tightness. Ensure that all fittings are secure.
- Check condition of blade, blade attachment, blade mechanism and replace components as required.
- Ensure there is no excessive debris present on the machine.
- The TFS230 is supplied with a specially commissioned electric motors and starter box assembly. Each unit is fully tested and set according to the manufacturer's specifications.
- In the event of malfunction on a new machine, the owner should first check that the power supply on site is suitable and adequate.
- All cables should be fully uncoiled and never left wrapped around cable reels or tied in loops. The starter box is fitted with a safety feature to protect the motor and from damage.
- The starter boxes are pre-set and under no circumstances should they be tampered with, stripped down or adjusted, this will invalidate the warranty. The starter control box must only be accessed by a fully trained person or electrically qualified engineer.

### 110v Motors

- Use a centre tap transformer with a continuous rated output of 5.0KVA and must be a 230v 20amp supply.
- Do not add an extension lead to the transformer input.
- Do not use a 230v 13amp domestic supply.
- The motor requires the minimum of a 32amp, 110v power supply.
- The 110v machine requires the use of 4mm<sup>2</sup> extension cable up to a maximum of 20 metres, as it draws a significant operating current.
- The use of 2.5mm<sup>2</sup> for 110v machines is not recommended and can cause operating problems, particularly in conjunction with poor supplies, where excessive voltage drops will be encountered and damage to the machine may occur.

### 230v Motors

- Take particular care when using 230v Machines, ensure that the electrical supply is earthed, and that breakers and fuses are correct for the loading.
- The 230v motor requires the minimum of a 13amp, 230v power supply. Always use the shortest possible length of extension cable.
- To avoid Voltage drop Trelawny recommends a maximum cable length of 40m with a core wire size of 4mm<sup>2</sup> cross sectional area.

## STARTING - ELECTRIC MOTORS

- Inspect the supply cable; Check that no damage has been caused to the outer casing and that there are no exposed or loose wires. Obtain the assistance of an electrician if a fault is found.
- Do not use the machine until it has been rectified.
- Check that the cable is not running across sharp or jagged edges and that it is not in contact with any liquid.

### STEP 1

- Adjust stripping angle and handle height as required.

### STEP 2

- Plug the supply cable into the inlet plug, ensure blade is free to move, and clear of any flooring material.

### STEP 3

- Press the green button and the motor will start.

### STEP 4

- To stop press the red button.

### STEP 5

- If the isolator will not turn on, unplug the supply cable, and press the small white button on the starter box side, this resets the overload in the motor breaker, then plug the supply cable back in to operate.
- **IMPORTANT** Allow 15 seconds after shutting off before turning the motor on again.



# OPERATION

- Before starting the motor, increase the “angle of attack” of the blade to the desired level until the blade makes contact with the underside of the surface to be stripped. Ensure the blade is NOT in contact with the target surface before starting the machine.
- Manually remove any nails, studs, pins, rebar etc. from the area to be stripped before starting work. Attempting to strip with such items in place will damage the blade and/or machine.
- For large area vinyl floors or large carpet areas use a knife score the material into strips of approximately same width as TFS blade before starting work.
- Complete a small area observing the performance; angle of attack, inspect the finish produced.
- DO NOT ADJUST THE BLADE ANGLE WHILST THE MACHINE IS IN OPERATION.
- Remember let the machine do the work before exerting excess pressure through the handle or foot plate. Light passes are quicker and more cost effective than one slow heavy pass.
- Avoid metal objects lodged in the floor as this will cause damage to the machine. DO NOT use the above method if the floor is wet or damp due to the inherent danger of the water ingress. NOTE: Electrical motors and switches are not totally waterproof; but are protected to IP44; take special care to protect them from water to ensure safety.
- The TFS230 is designed to be used in a forward motion; the oscillation of the blade also helps with the operation. The operator can vary the speed of travel and angle of adjustment to determine the final finish.
- In an emergency, when the blade must be lifted quickly from the work surface, it is not necessary to turn off the machine, simply tilt backwards on the handlebar to lift the front wheels off the floor.
- DO NOT move the machine around the work area tilted to the rear, with the blade in the air, without a blade protector.
- DO NOT leave the machine connected and unattended at any time. Ensure the blade protector is in place at all times when not in use.
- PPE must be worn at all times.

# SERVICING & MAINTENANCE

## SAFETY

- Only a competent person, in a suitably equipped workshop, must carry out maintenance.
- **ALWAYS** read and understand the operators manual before carrying out any maintenance.
- Before carrying out any maintenance switch off the motor and disconnect the power supply.
- Use personal protective equipment when carrying out any maintenance or servicing.
- DO NOT use a Pressure Washer on the machine.

## GENERAL MAINTENANCE

- After use, clean the machine to remove all build up of dust and surface residues. Check the drive elements for build up of deposits and any trapped debris etc. Check the underside for damage. Serious damage could result to the drive shaft, bearings and drive motor if the blade mechanism is obstructed.

## LUBRICATION

The machine is equipped with a built in lubrication port for easy, re-lubrication with no machine disassembly required.

- The lubrication port is compatible with most conventional 6mm, 4-jaw grease gun couplings. The machine must ONLY be lubricated with approved LGHB 2/0.4 Mineral Oil Grease. Use of any other lubricants may cause damage to the machine and will invalidate any manufacturer's warranty
- Ensure machine is cool. Attempting to lubricate a machine at close to running temperature can cause burns or other injury.
- Tilt machine gently onto its side, laying down a blanket or other soft material to protect the side casings of the motor.
- Locate the grease port, and wipe clean with a clean cloth
- Push the grease gun coupling onto the grease nipple **IN LINE WITH THE NIPPLE** – applying excess sideways force could shear the nipple from the housing causing damage to the lubrication system.

- With the grease coupling tight on the grease nipple, dispense 0.75-1ml of grease into the product. For most conventional manual grease guns this is 1 pump on the handle, after priming. **DO NOT** overfill the machine with lubricant; this can damage the running gear of the machine. If you suspect the bearing has been overfilled, contact Trelawny for technical advice.
- Check around coupling to ensure lubricant has been dispensed into the grease nipple, and not leaked around it.
- Remove the grease gun from the nipple, noting that excess sideways force could shear the nipple from the housing causing damage to the lubrication system.
- Wipe clean the grease nipple with a clean cloth.
- Reinstall machine onto its wheels, and test-run for 30 seconds whilst running freely (not under load) to distribute lubricant correctly.

## REASSEMBLY

It is essential all components are assembled in correct order and are free from dirt and debris. It is especially important any lubricant is clean and not contaminated with particles or other debris. Follow the below procedure when tightening the motor spindle bolt. A new motor spindle bolt must be used.

- Ensure all components are assembled and aligned correctly
- Apply medium-strength threadlock (Adtech 6204 / Loctite 243 or similar approved) to (clean) threads of motor spindle bolt and screw into motor shaft until hand-tight.
- Line up hole on lower face of stripping arm assembly with corresponding hole on main chassis (carefully turn motor shaft bolt head clockwise until holes align)
- Insert Ø10mm steel rod through both holes & hold firmly.
- Use impact wrench with correct high-impact socket on low-torque setting to secure bolt in position. Do not apply impact wrench torque for more than 1 second.
- Allow minimum of 3 hrs for threadlock adhesive to cure prior to using machine.

## MACHINE STORAGE

### Short period storage: up to 3 months

- Remove battery and store in a dry place.
- Clean outside of machine, inspect the moving parts for wear; replace any worn parts as required.
- Remove any build up of material from inside the mechanical area.
- Cover the machine to protect it: Store in a dry place.
- Check security of all fastenings after any lay up period. See also motor manufactures operation and maintenance instruction book.

### Long period storage: over 3 months

- Remove battery and store in a dry place.
- Clean the outside of the machine, inspect for wear; replace any worn parts as required.
- Remove any build up of material from inside the mechanical area.
- Cover the machine to protect it: Store in a dry place.
- After any long lay up period be sure to check the security of all fastenings.
- Ensure blade is removed and stored safely.

## MAINTENANCE SCHEDULE

MAINTENANCE	EACH USE	30 HRS	60 HRS
Examine the general condition of the machine	✓		
Check blade wear and sharpness	✓		
Clean external surfaces of the machine	✓		
Check all bolts and screws for tightness	✓		
Perform electrical inspection (Switch & E-STOP)		✓	
Check height adjustment assembly		✓	
Check stripping head movement		✓	
Grease motor bearing		✓	
Strip down and service stripping head assembly			✓
Inspect (replace if necessary) wear strip			✓

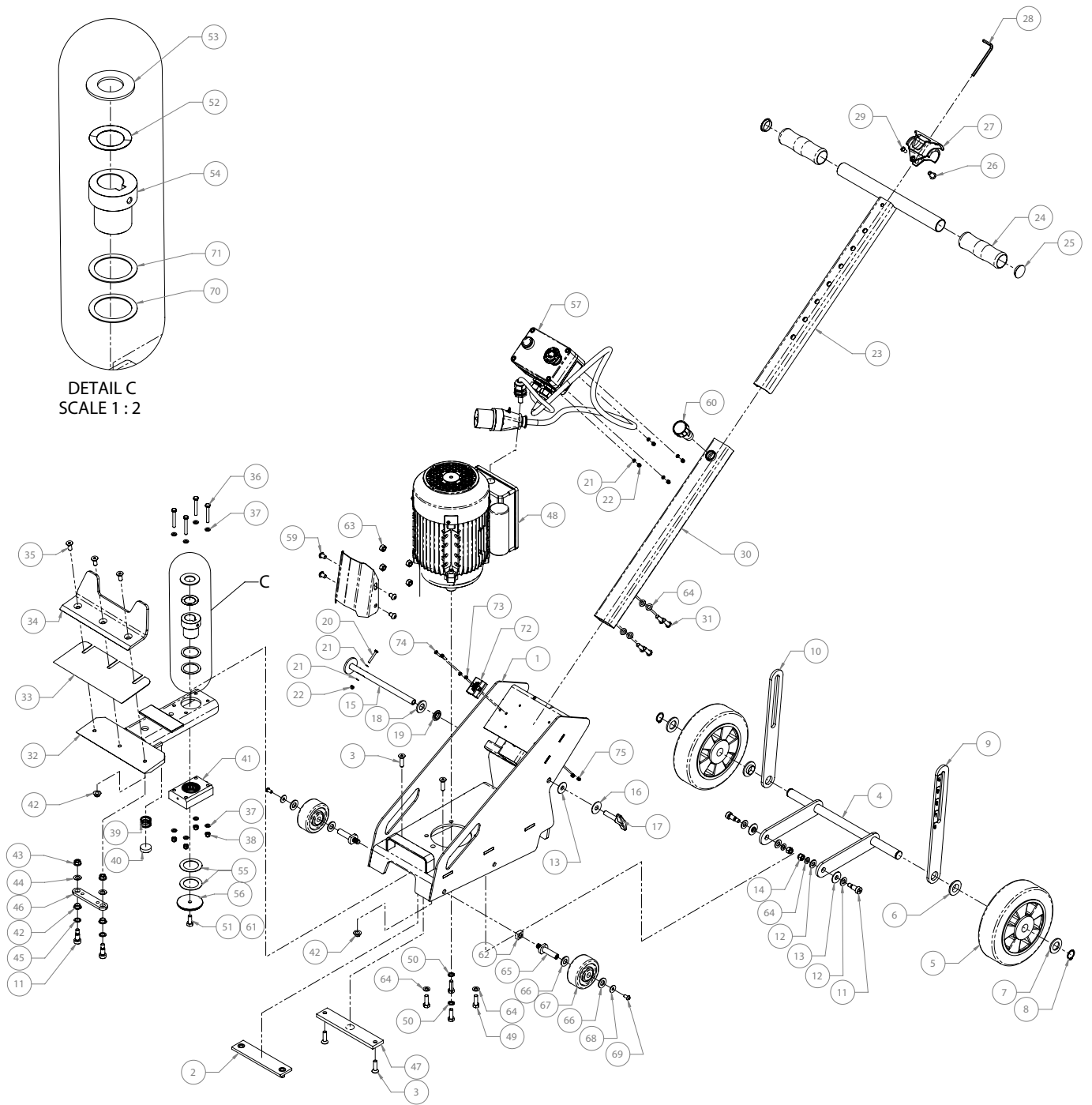
## PPE & WARNING SYMBOLS

SYMBOL / WARNING	DESCRIPTION	SYMBOL / WARNING	DESCRIPTION
	ALWAYS Read the manual		Caution assisted lift only
	Wear protective glasses		Caution crush point
	Wear ear defenders		Caution pinch point
	Wear protective shoes		Danger 110v
	Wear protective gloves		Danger 230v

# TROUBLESHOOTING

FAULT	POSSIBLE CAUSE	ACTION
Electric motor will not start	Insufficient voltage supply	Check supply voltage with within specifications.
		Check transformer (if present) is of recommended specification and functioning correctly.
		Check transformer (if present) thermal trip hasn't activated. Wait and reset if applicable.
		Check Cable extension length is within specified limits and/or cross section is equal or over size. Refer to Manual
Electric motor stops during use	Stripping head jammed	Ensure machine is clear of all flooring and other media before starting.
	thermal safety trip has activated	Wait until machine has cooled down (approx 30mins), press the reset button on the side of the electrical enclosure, then attempt restart. If the issue persists, contact customer support.
Electric motor stops during use	Motor stalled	Ensure machine is clear of all flooring and other media before restarting. If the issue persists, contact customer support.
	Thermal safety trip has activated	Wait until machine has cooled down (approx 30mins), press the reset button on the side of the Electrical Enclosure, then attempt restart. If the issue persists, contact customer support.
Stripping head not removing material effectively	blade blunt/damaged/clogged	Inspect stripping blade. Carefully clean or replace blade if required.
	Blade incorrectly stalled	Check blade installation for squareness & tightness. Blade should have bevel facing up for most flooring media.
	Incorrect/inefficient stripping head angle	Adjust stripping angle as required. Use the minimum angle possible for media to be removed.
	Stripping sheet materials, such as vinyl or carpet	Use a knife to score the material into strips of approximately same with as TFS230 blade before starting work.
	Eccentric bearing failure	Replace
Unexpected noise / rattling	Motor/drivetrain wear	Switch off & Isolate power to machine. Carefully inspect motor & free-moving parts.
	Worn or loose fixings/fasteners	Switch off & isolate power to machine. Carefully inspect fixings, pivots etc. tighten any loose fasteners.

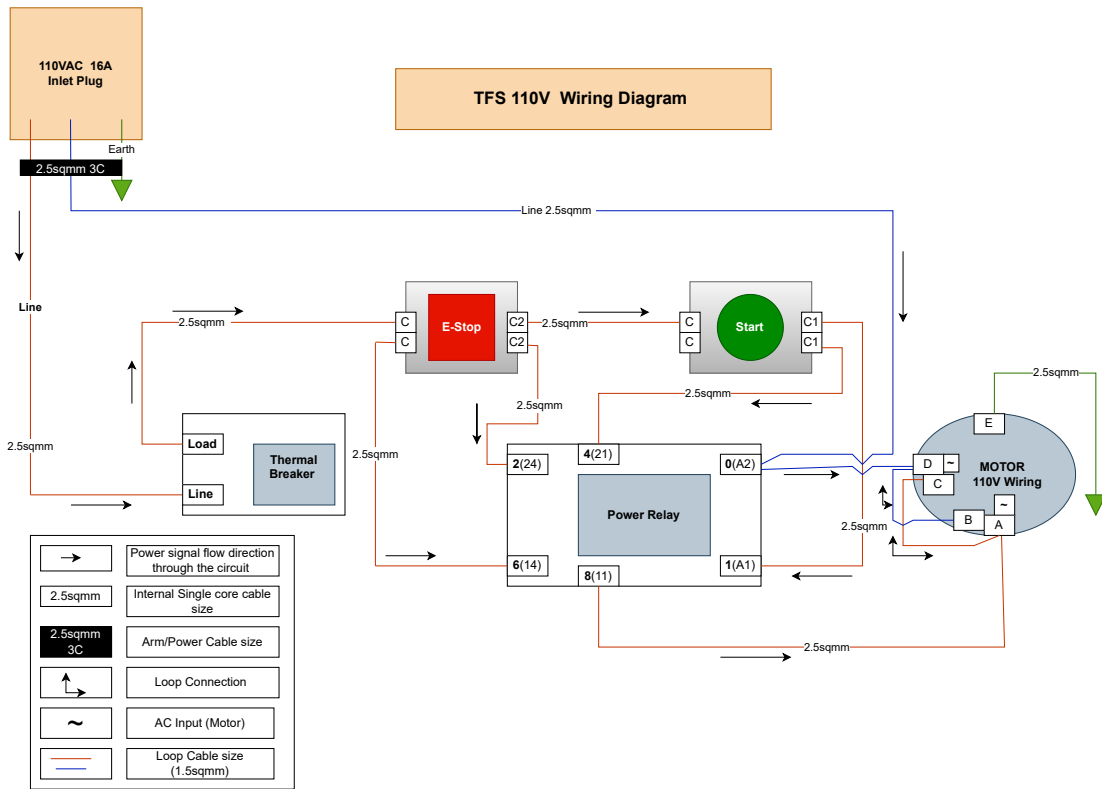
# EXPLODED VIEW - TFS230



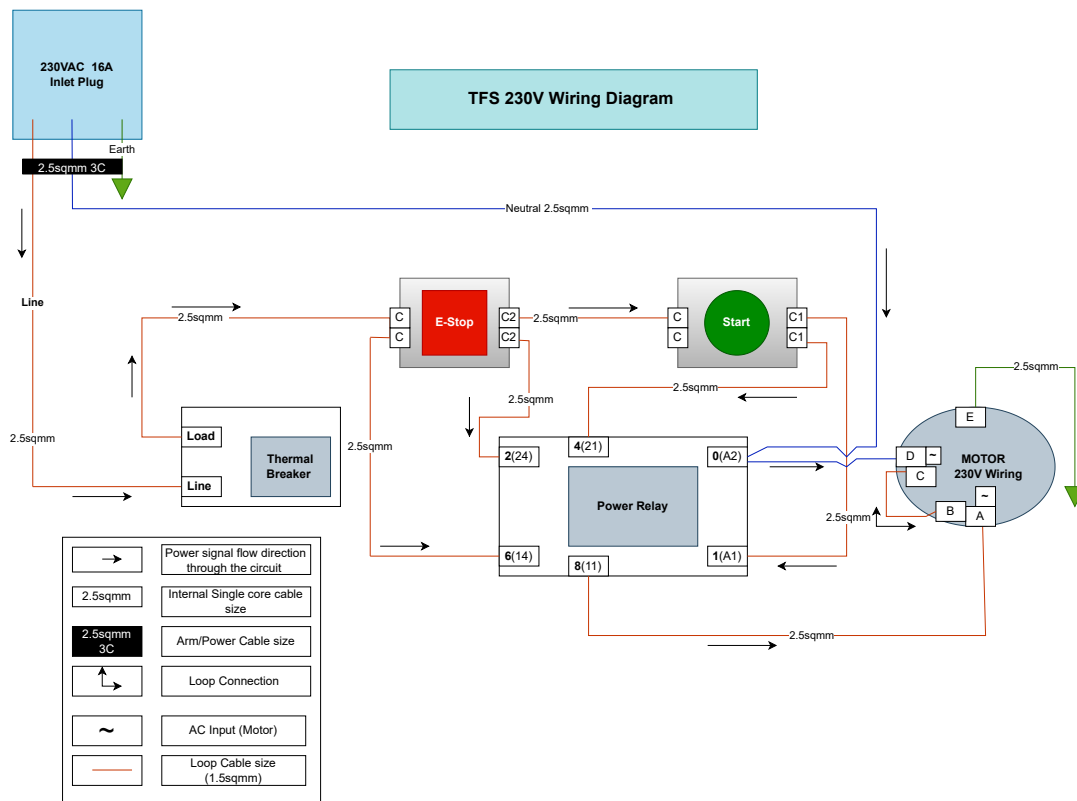
# PARTS LIST - TFS230

ITEM	PART NO.	DESCRIPTION	QTY	ITEM	PART NO.	DESCRIPTION	QTY
1	990.0011	Chassis Metalwork Assy	1	39	875.1226	Compression Spring	1
2	990.0035	Stripper Arm Wear Strip Assembly	1	40	875.1198	Disc Bearing	1
3	853.0830	CSK Hex Screw	4	41	990.0037	Bearing Housing Assembly	1
4	990.0014	Rear Wheel Linkage Assembly	1	42	875.1526	Polymer Flanged Bush	4
5	350.9121	Wheel 200mm	2	43	875.1287	Flanged Nut	2
6	875.1195	Nylon Shoulder Washer	2	44	875.1248	Polymer Washer	2
7	812.1001	Washer	2	45	875.1288	Shim Washer	2
8	814.1020	Circlip	2	46	990.1052	Stripping Head Pivot Arm	1
9	990.1041	Rear Wheel Height Linkage LH	1	47	990.1051	Stripper Arm Brace Bar	1
10	990.1075	Rear Wheel Height Linkage RH	1	48	875.1283	Electric Motor	1
11	875.1187	Shoulder Screw	4	49	831.0825	Hex Head Machine Screw	4
12	812.0710	Washer	4	50	811.1008	Locking Washer	2
13	875.1193	Nylon Shoulder Washer	3	51	831.0820	Screw	1
14	824.0800	Locking Nut	2	52	875.1242	Disc Spring	1
15	990.0020	Height Adjustment Metalwork Assy	1	53	875.1303	Pin Washer	1
16	812.2010	Washer	1	54	990.1060	Motor Spindle Bushing	1
17	857.1010	Male Wing Screw	1	55	875.1246	Thrust Washer	2
18	875.1216	Nylon Washer	1	56	875.1196	Washer	1
19	875.1194	Nylon Shoulder Washer	1	57	990.0033	Electrics Enclosure Assembly	1
20	875.1293	Hex Bolt	1	58	990.1093	Motor Shield	1
21	812.1040	Washer	6	59	852.0812	Button Head Screw	4
22	875.1215	Locking Nut	5	60	323.9104	Clamping Spring Plunger	1
23	990.0023	Handle Upper Metalwork Assy	1	61	875.1300	Threadlock - Medium Strength	3
24	991.1030	Rubber Grip	2	62	875.1270	Square Nut	2
25	875.1037	Tube End Cap	2	63	320.9226	Hex Nut	4
26	875.1305	Barrel Nut	1	64	812.1080	Washer	8
27	990.1091	Upper Handle Cable Guide	1	65	990.1076	Wheel Stub Axle	2
28	805.0501	Hex Key	1	66	812.0712	Washer	4
29	852.0616	Button Head Hex Screw	1	67	320.9120	Wheel 75mm	2
30	990.0019	Central Handle Mid Sleeve Assy	1	68	812.2060	Washer	2
31	875.1219	Button Head Hex Screw	4	69	852.0612	Button Head Hex Screw	2
32	990.0017	Stripping Head Metalwork Assembly	1	70	875.1450	Polymer Washer	1
33	323.3509A	Stripping Blade 230mm	1	71	875.1493	Shim Washer	1
34	990.1059	Stripping Head Blade Plate	1	72	990.1108	Cable Clamp	1
35	875.1199	CSK Hex Screw	3	73	812.1040	Washer	2
36	875.1290	Hex Bolt	4	74	872.0425	Pan Head Screw	2
37	812.1060	Washer	8	75	875.1215	Locking Nut	2
38	824.0600	Locking Nut	4				

# WIRING - 110v MACHINES



# WIRING - 230v MACHINES



# TECHNICAL SPECIFICATIONS

DETAIL	MODEL
Part Code	323.2402 / 323.2404
Description	TFS230 110v / TFS230 230v
Motor Power	1.1kW
Motor Type	Brushless
Motor Speed	1,425 rpm
Blade Width	230 mm
Length	1000 mm
Width	350 mm
Height	860 mm
Weight	48 kg
Sound Pressure Level (LpA)	76.8 dB(A)
Sound Power Level (LwA)	91.1 dB(A)
Vibration Level	11.5 m/s <sup>2</sup>
Trelawny SPT Ltd operates a policy of continuous product development and refinement and therefore reserves the right to change technical specifications and product designs without giving prior notice.	

If your company has any problem with our products or would like to discuss the possibility of an improvement being made to them, then please do not hesitate to contact us. Your comments are both important and appreciated.

Trelawny tools are thoroughly tested under specified conditions in accordance with applicable internationally recognised standards. When a tool is used on site the conditions may not be the same as those used in our tests.

Trelawny Surface Preparation Technology operates a policy of continuous product development and refinement and therefore reserves the right to change technical specifications and product designs without giving prior notice.

All rights reserved. Any unauthorised use or copying of the contents or part thereof is prohibited. This applies to trademarks, model denominations, part numbers and drawings.

**Use only genuine Trelawny consumables with this product. The use of non-Trelawny spare parts invalidates the warranty.**





THE PERFECT FINISH  
STARTS WITH  
TRELAWNY



## DEALER STAMP:



## CONTACT US

**Trelawny SPT Limited**

Trelawny House, 13 Highdown Road, Sydenham Industrial Estate,  
Leamington Spa, Warwickshire, CV31 1XT, United Kingdom

**Telephone:** +44 (0)1926 883781

**Email:** [sales@trelawny.com](mailto:sales@trelawny.com)

**Website:** [www.trelawny.com](http://www.trelawny.com)

**Manual Part Number:**

**735.5230 01**

CERTIFIED  
**ISO 9001**



0008