

TFS230 VM 82v FLOOR STRIPPER

OPERATION & MAINTENANCE MANUAL



CONTENTS

INTRODUCTION	3
GENERAL INFORMATION	3
CE DECLARATION OF CONFORMITY	4
UKCA DECLARATION OF CONFORMITY	5
DECLARATION OF CONFORMITY	6
HAND ARM VIBRATION	7
WARRANTY	7
GENERAL SAFETY	7
BATTERY SAFETY	8
CHARGER SAFETY	8
BATTERY CHARGING	9
ASSEMBLY INSTRUCTIONS	9
HANDLE ADJUSTMENT	10
BLADE SET UP	10
BLADE ANGLE ADJUSTMENT	11
PRE START CHECKS (DAILY)	11
STARTING WORK	11
OPERATION	12
SERVICING & MAINTENANCE	13
MACHINE STORAGE	13
MAINTENANCE SCHEDULE	14
PPE & WARNING SYMBOLS	14
TROUBLESHOOTING	15
EXPLODED VIEW - MACHINE	16
PARTS LIST - MACHINE	17
EXPLODED VIEW - POWERHEAD	18
PARTS LIST - POWERHEAD	19
TECHNICAL SPECIFICATIONS	20
TECHNICAL SPECIFICATIONS	21
NOTES	21
NOTES	22
NOTES	23
CONTACT US	24

INTRODUCTION

Thank you for choosing a product by Trelawny SPT Ltd, an innovative leading brand in the Surface Preparation sector.

This product has been manufactured under stringent quality standards to meet superior performance criteria. This manual contains the necessary maintenance information for you to ensure proper operation and care for this equipment.

In the unlikely event that you experience a problem please do not hesitate to contact your local Trelawny dealer or agent. We always welcome feedback and comments from our valued customers.



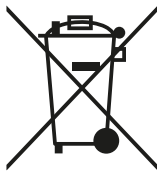
WARNING:

Carefully read through these original instructions before using your new TRELAWNY Equipment. Take special care to read warnings. TRELAWNY products have many features that will make your job faster and easier. Safety, performance, and dependability have been given top priority in the development of this product, making it easy to operate and maintain.



ENVIRONMENTAL PROTECTION:

The equipment, accessories and packaging should be sorted for environmentally friendly recycling. The plastic components are labelled for categorised recycling.



DISPOSAL:

Waste products should not be disposed of with household waste. Please recycle where facilities exist. Check with your local authority or retailer for recycling advice.

GENERAL INFORMATION

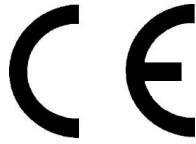
Before operating any TRELAWNY equipment, this manual must be read and understood by the operator, if in any doubt ask your supervisor before using this equipment. Failure to follow these instructions could result in damage to the equipment and/or personal injury.

Trelawny SPT Ltd disclaims all responsibility for damage to persons or objects arising as a consequence of incorrect handling of the equipment, failure to inspect the equipment

prior to starting work for damage or other faults that may influence the operation of safe working of the equipment, or failure to follow the safety regulations listed or applicable to the job site.

Operators should be familiar with the data given in the specification section. Please keep these instructions in a safe and accessible place.

CE DECLARATION OF CONFORMITY



EU Declaration of Conformity

We, Trelawny SPT Ltd of 13 Highdown Road, Sydenham Industrial Estate, Leamington Spa, Warwickshire, CV31 1XT, GB declare that the DoC is issued under our sole responsibility and belongs to the following product:

PART NUMBER
DESCRIPTION
SERIAL NUMBER
YEAR OF CONSTRUCTION



The object of the declaration described above is in conformity with the relevant **Union Harmonisation Legislation:**

- 2006/42/EC Machinery Directive
- 2014/30/EU EMC Directive
- 2014/35/EU Low Voltage Directive
- 2011/65/EU Restriction of Hazardous Substances Directive

The following harmonised standards and technical specifications have been applied:

- EN ISO 12100:2010 Safety of machinery
- EN 60204-1:2018 Safety of machinery. Electrical equipment of machines - General requirements
- EN ISO 4871:2009 Acoustics. Declaration and verification of noise emission values of machinery and equipment

Technical files are held by Indutrade Benelux BV, Anton Philipsweg 1, 1422 AL Uithoorn, Netherlands

Notified Body:
Not Applicable. Machinery is not listed under ANNEX IV of the Machinery Directive.

Place of Declaration:
Trelawny SPT Ltd, 13 Highdown Road, Sydenham Industrial Estate, Leamington Spa, Warwickshire, CV31 1XT, GB

Date of Declaration:
December 2024

Signed by:

Daniel Rowledge
Managing Director

UKCA DECLARATION OF CONFORMITY



UKCA Declaration of Conformity

We, **Trelawny SPT Ltd of 13 Highdown Road, Sydenham Industrial Estate, Leamington Spa, Warwickshire, CV31 1XT, GB** declare that the DoC is issued under our sole responsibility and belongs to the following product:

PART NUMBER

DESCRIPTION

SERIAL NUMBER

YEAR OF CONSTRUCTION

The object of the declaration described above is in conformity with the relevant **Statutory Requirements:**

- **2008 No. 1597** Supply of Machinery (Safety) Regulations 2008
- **2016 No. 1091** Electromagnetic Compatibility Regulations 2016
- **2016 No. 1101** The Electrical Equipment (Safety) Regulations 2016
- **2012 No. 3032** The Restriction of the Use of Certain Hazardous Substances in Electrical and Electronic Equipment Regulations 2012

The following designated standards and technical specifications have been applied:

- **BS EN ISO 12100:2010** Safety of machinery
- **BS EN 60204-1:2018** Safety of machinery. Electrical equipment of machines - General requirements
- **BS EN ISO 4871:2009** Acoustics. Declaration and verification of noise emission values of machinery and equipment

Technical files are held by **Daniel Rowledge** at the Trelawny address stated above.

Approved Body:

Not Applicable. Machinery is not listed under ANNEX IV of the Supply of Machinery (Safety) Regulations 2008

Place of Declaration:

Trelawny SPT Ltd, 13 Highdown Road, Sydenham Industrial Estate, Leamington Spa, Warwickshire, CV31 1XT, GB

Date of Declaration:

December 2024

Signed by:

Daniel Rowledge
Managing Director

DECLARATION OF CONFORMITY

<p>CZ Prohlášení o přizpůsobení My, společnost Trelawny SPT Limited podávamej daňové přiznání, že výrobek a dodávka výrobku název výrobku Model, výrobní číslo Rok výroby Pro které se průkaz týkající, je přizpůsobení s zásobou od následující příkazov a jejich pohotovostní: 2006/42/EC Příkaz soustrojí 2014/35/EC Příkaz nízkého napětí (upotřebitelné jedině do výrobku použité elektrické energie)</p>	<p>LT ATITIKTIES DEKLARACIJA Mes, Trelawny SPT Limited Prisiidami visą atsakomybę deklaruojame, kad tiekiamas / gaminamas produktas Produkto pavadinimas Modelis, serijos numeris Pagaminimo Kuriam taikoma ši deklaracija, atitinka šių direktyvų, norminių aktų ir su jais susijusių, standartų reikalavimus: 2006/42/EC Įtango direktyva 2014/35/EC Žemos įtampos direktyva (taikoma tik elektriniams įrengimams)</p>
<p>DE Übereinstimmungserklärung Wir, Trelawny SPT Limited erklären, dass unter unserer alleinigen Verantwortung für die Lieferung und Herstellung des Produktes Name des Produktes Model, Seriennummer Jahr der Herstellung auf welches sich dieses Dokument bezieht, stimmt mit den Vorgaben der folgenden Direktive, normativen Dokumente und deren jeweiligen Masstabe ein: 2006/42/EC Maschineriedirektive 2014/35/EC Niederspannungsrichtlinie (nur zutreffend auf Produkte, die Strom benutzen)</p>	<p>MT DIKJARAZZJONI TA KONFORMITÀ Ahna, Trelawny SPT Limited Niddikjaraw li ahna responsabbli kompletament għal provista / manifattura tal-prodott hawn 1msemmi: Isem Il-Prodott Mudell, Serial number Sena la 'produzzjoni Dan id-dokument magħmul għal prodott imsemmi hawn fuq, li huwa skond il-provizjonijiet imsemmija fid-dokumenti tal-klassi tax-xogħol: 2006/42/EC Machinery Directive 2014/35/EC Low Voltage Directive (tappilka biss għal prodotti li jahdmu bi-elekttriku)</p>
<p>DK Erklæring om overensstemmelse Vi, Trelawny SPT Limited Erklærer hermed at under vores ene forhandling ansvar for vores forhandling/produktion af produktet Produkt navn Model, serie nummer Produktionsår For hvilket dette dokument referer, at deler i overensstemmelse med bestemmelser af følgende direktiver, normative dokumenter og deres relevante standard: 2006/42/EC Machinery directive 2014/35/EC Low voltage directive</p>	<p>NL EENVORMIGHEIDSVERKLARING Wij, Trelawny SPT Limited Verklaaren dat wij de volledige verantwoordelijkheid dragen voor het leveren/fabriceren van het volgende product: Naam van het product Type, Serienummer Productiejaar En verklaaren dat het product waarnaar dit document verwijst eenvoudig is met de voorzieningen van de volgende Richtlijn(en). Normatieve Documenten en hun relevante Standaarden: 2006/42/EC MACHINERIECHTLIJN 2014/35/EC LAAGSPANNINGSRICHTLIJN (uitsluitend van toepassing bij producten die elektrische stroom gebruiken)</p>
<p>EE TOOTE VASTAVUSE DEKLARATSIOON Meie, Trelawny SPT Limited Deklareerime, et vastutame järgmise varustuse/toote müügi eest Toote nimetus Mudel, Seeria number Aegsita loodärgu Arvutud dokument käsitleb toote vastavust järgmistele direktiivide/lele, normatiividele ja nendega samaväärsetele standardidele: 2006/42/EC MASINA DIREKTIIVID 2014/35/EC MADALPINGE DIREKTIIVID (Kohandatakse vaid tootele, mis kasutavad elektrivoolu)</p>	<p>PL Deklaracja Zgodności My, Firma Trelawny SPT Limited. oświadczamy w naszej odpowiedzialności, że produkcja i dostawa urzadzzenia Nazwa produktu Model, numer seryjny Rok produkcji do którego ten dokument należy, jest zgodne z klauzulami następujących zarządzeń i ich istotnych standardów: 2006/42/EC Zarządzenie mechaniczne 2014/35/EC Zarządzenie niskiego napięcia elektrycznego (Zastosowanie tylko przy urządzeniach elektrycznych)</p>
<p>ES Declaración de Conformidad Nosotros, Trelawny SPT Limited Declaramos que bajo nuestra completa responsabilidad de la fabricación/suministro del producto Nombre del Producto Modelo, No de Serie Año de producción A quien este documento se refiere, está de acuerdo con lo relacionado en la Directriz, Normativa Documentada y sus relevantes standards: 2006/42/EC Directorio de Maquinaria 2014/35/EC Directorio de Bajo Voltaje (Aplicable solamente a productos que funcionen con electricidad)</p>	<p>PT DECLARAÇÃO DE CONFORMIDADE CE A empresa TRELAWNY SPT LIMITED Declara, sob sua inteira responsabilidade, que o fornecimento/fabrico do seguinte produto: Designação do produto Modelo, Número de Série Ano de produção a que esta declaração se refere, está em conformidade com o preceituado nas Directivas e Normas Comunitárias abaixo indicadas: 2006/42/EC DIRECTIVA DE MÁQUINAS 2014/35/EC DIRECTIVA DE BAIXA VOLTAGEM (Aplicável apenas a produtos que utilizam energia eléctrica)</p>
<p>FI ILMOITUSVAHVISTUS Me, Trelawny SPT Limited Valvistanamme tuotteen toimittamisesta/valmistamisesta Tuotteen nimi Malli, sarjanumero Valmistusvuosi Täällä todistuksella vahvistamme säädökset seuravien ohje/ohjesien, Yleisin papereihin ja niihin liittyvät vaatimukset: 2006/42/EC KONEISTON OHJEET 2014/35/EC PIENJÄNNITTE OHJEET (tarvitaan ainoastaan tuotteille jotka käyttävät sähkövoimaa)</p>	<p>RU СВИДЕТЕЛЬСТВО О СООТВЕТСТВИИ Мы, Trelawny SPT Limited Заявляем, что несем полную ответственность за поставку/производство нижеуказанной продукции Наименование изделия Модель, серийный номер Год выпуска на которую выдано настоящее Свидетельство, и которая соответствует положениям следующей(их) директиве(ы), нормативным документам и относящимся к ним стандартам: 2006/42/EC ДИРЕКТИВА ПО МЕХАНИЗМАМ 2014/35/EC ДИРЕКТИВА ПО НИЗКОВОЛЬТНОМУ ОБОРУДОВАНИЮ (распространяется только на изделия с электропитанием)</p>
<p>FR DÉCLARATION DE CONFORMITÉ Nous, soussignés Trelawny SPT Limited déclarons que le produit sous-nommé Nom du produit Modèle et Numéro de Série Année de production et pour lequel nous prenons entière responsabilité pour sa fourniture et manufacture, est conforme aux clauses des directives suivantes documents normatifs et normes qui s'y appliquent: 2006/42/EC DIRECTIVE POUR LA MACHINERIE 2014/35/EC DIRECTIVE POUR BAS VOLTAGE (n'est applicable qu'aux produits utilisant l'énergie électrique)</p>	<p>SE FÖRSÄKRAN OM ÖVERENSSTÄMMELSE VI, TRELAWNY SPT LIMITED FÖRKLARAR ATT VI MED ENSAMT ANSVAR ANSKAFFAT / TILLVERKAT PRODUKTEN PRODUKTNAMN MODELL och SERIE NUMMER Tillverkningsår TILL VILKEN DETTA DOKUMENT HÄNVISAR ÄR I ÖVERENSSTÄMMELSE MED FÖLJANDE DIREKTIV, NORMATIVA DOKUMENT OCH DERAS RELEVANTA STANDARDER 2006/42/EC MASKINDIREKTIV 2014/35/EC LÅGSTRÖMSDIREKTIV (TILLÄMPLIG PÅ ELEKTRISK DRIVNA PRODUKTER)</p>
<p>GR ΔΗΛΩΣΗ ΠΙΣΤΟΤΗΤΑΣ Η εταιρεία Trelawny Spt Limited Δηλώνει ότι έχει τη μοναδική ευθύνη ως κατασκευαστρια / προμηθευτρια του παρακάτω προϊόντος περιγραφη προϊόντος μοντέλο, αριθμός σειράς έτος παραγωγής και στο οποίο αναφέρεται αυτή η δήλωση, είναι συμβατό με τις προδιαγραφές που ορίζονται στις ακόλουθες Κοινοτικές Οδηγίες Ελεγκτικές Διατάξεις κι άλλες σχετικές προδιαγραφές 2006/42/EC ΟΔΗΓΙΑ ΠΕΡΙ ΜΗΧΑΝΗΜΑΤΩΝ 2014/35/EC ΟΔΗΓΙΑ ΠΕΡΙ ΧΑΜΗΛΗΣ ΤΑΣΗΣ (αφορά μόνον προϊόντα που λειτουργούν με ηλεκτρικό ρεύμα)</p>	<p>SI IZJAVA O SKLADNOSTI Trelawny SPT Limited pod polno odgovornostjo izjavljamo, da so spodaj navedeni proizvodi, ki jih dobavljamo/produčujemo: Ime proizvoda Model, serijska številka Leto proizvodnje na katere se ta dokument nanaša, proizvedeni v skladu z določili naslednjih direktiv, normativnih dokumentov in njihovih relevant- nih standardov: 2006/42/EC DIREKTIVA O STROJIH 2014/35/EC DIREKTIVA O STROJIH Z NIZKO VOLTAŽO (nanaša se samo na proizvode na električni pogon)</p>
<p>HU MEGFELELŐSÉGI NYILATKOZAT Mi, A "Trelawny SPT Limited" cég Felelősségünk tudatában kijelentjük, hogy mint a termék szállítója/gyártója Termék neve Típus, Sorozatszám Gyártási év amelyre jelen dokumentum vonatkozik, megfelel az alábbi Irányelv(ek), Irányadó Dokumentumok előírásainak, és az azokat meghatározó szabványoknak: 2006/42/EC GÉPÉSZETI IRÁNYELVEK 2014/35/EC KISFESZÜLTÉSŰ IRÁNYELVEK (Csak az elektromos meghajtású gépeknél)</p>	<p>TR UYGUNLUK BEYANI Trelawny SPT Limited Aşağıdaki, üretim ve tedarikinden tek başına sorumlu olduu ürünün Ürün adı Model/Seri no Üretim yılı bu belgenin ilgili olduu apaşğıdaki yönetmeliklerin, norm belgelerinin ve ilgili standartları/nyın koşullarına uygun olduunu beyan eder: 2006/42/EC MAKYNALAR YÖNETMELYDY 2014/35/EC DÜPÜK GERİLİM YÖNETMELYDY (Yalnızca elektrikle çalyan ürünlerde geçerlidir)</p>
<p>IT DICHIARAZIONE DI CONFORMITÀ La Società Trelawny SPT Limited Dichiaro, sotto la propria responsabilità, che la fornitura / produzione del prodotto Nome prodotto Modello, codice Anno di produzione a cui si riferisce tale documento è conforme alle seguenti Direttive, ai documenti della Normativa ed ai relativi standard: 2006/42/EC DIRETTIVA SULLE APPARECCHIATURE 2014/35/EC DIRETTIVA SUL BASSO VOLTAGGIO (applicabile esclusivamente per i prodotti che utilizzano energia elettrica)</p>	

HAND ARM VIBRATION

Trelawny Equipment may cause hand-arm Vibration Syndrome injury if their use is not adequately managed.

We advise you to carry out a risk assessment and to implement measures such as; limiting exposure time [i.e. actual trigger time, not total time at work], job rotation, ensuring the tools are used correctly, ensuring the tools are maintained according to our recommendations, and ensuring that the operators wear personal protective equipment (PPE) particularly gloves and clothing to keep them warm and dry.

Employers should consider setting up a programme of health surveillance to establish a benchmark for each operator and to detect early symptoms of vibration injury.

We are not aware of any PPE that provides protection against vibration injury by attenuating vibration emissions.

See 'Specifications' section for vibration emission data.

Further advice is available from our Technical Department.

We strongly advise you to visit the Health & Safety Executive website <http://www.hse.gov.uk/vibration> - this site provides excellent advice and information on HAV and currently, includes a Hand-Arm Vibration Exposure Calculator that is easy to use to work out the daily vibration exposure for each of your operators.

WARRANTY

When you choose TRELAWNY, you're investing in a product engineered for strength, durability, and unwavering reliability. Our equipment is built to endure the toughest challenges, showcasing over 80 years of craftsmanship in Surface Preparation Technology. We take pride in being the industry benchmark, offering not just a tool but a lasting companion for tough jobs, backed by a 12-month warranty for peace of mind.

Register your TRELAWNY product within 30 days of purchase by scanning the QR code to activate your warranty and enjoy the full support from our team.

PLEASE RETAIN YOUR PROOF OF PURCHASE, AS IT WILL BE REQUIRED TO PROCESS ANY WARRANTY CLAIMS.

The following are not covered under the Trelawny warranty:

- Damage caused by abuse, misuse, dropping or other similar damage caused by or as a result of failure to follow assembly, operation or user maintenance instructions.
- Alterations, additions or repairs carried out by persons other than Trelawny or their recognised agents.

- Transportation costs to and from Trelawny or their recognised agents, for repair or assessment against a warranty claim, on any equipment.
- Materials and/or labour costs to renew, repair or replace components due to fair wear and tear.

In no case whatsoever shall the Customer be entitled to claim damages, in particular but not be limited, loss of profit and other direct or indirect or consequential damage. This exclusion of liability, however, does not apply to unlawful intent or gross negligence on our part, but does apply to unlawful intent or gross negligence of persons employed or appointed by us to perform any of his obligations.



All warranty claims should firstly be directed to Trelawny SPT Ltd. Please provide, part number, serial number and proof of purchase, either by telephone or E-mail.

Tel: +44 (0)1926 883781

Email : warranty@trelawny.com

GENERAL SAFETY

DO:

- Wear personal protective equipment including safety goggles, footwear, ear defenders and gloves. In some environments it will be necessary to wear facemasks or breathing apparatus.
- Be aware that this equipment can create dust and flying debris.
- Keep hands, feet and clothing away from moving parts.
- Follow the prestart checks detailed in this manual.
- Ensure that the workplace is well ventilated.
- Be aware of others working around you.
- Always follow safe-working practices.
- Inspect the equipment prior to using.
- Store this equipment in a secure and dry environment.

DO NOT:

- Modify this equipment in any way. This will invalidate the warranty and could lead to serious injury.
- Allow the equipment to run unattended.
- Use petrol (gasoline), thinners or any other high flash point solvent to clean the equipment.
- Disassemble or repair unless Trelawny trained.
- Permanently fix the operating lever or button in the on/run position.

BATTERY SAFETY

If the battery pack leaks fluid or smells strangely, IMMEDIATELY move it away from any heat sources or flame. There is a risk of fire or rupturing if the leaked liquid or gas ignites.

The Battery Pack contains combustible organic solvents as an electrolyte solution. If the liquid gets into your eyes, rinse them with plenty of water. After that, IMMEDIATELY seek medical care.

When the Battery Pack is not in use, keep it away from other metal objects, like paper clips, coins, keys, nails, screws or other small metal objects, that can make a connection from one terminal to another. Shorting the battery terminals together may cause burns or a fire.

In case of fire, STOP using the machine immediately and extinguish with dry chemical, sandy soil, carbon dioxide or appropriate foam.

The Battery Pack will deteriorate if it is repeatedly charged and discharged, as well as if it is stored and not used.

As the Battery Pack deteriorates, its full-charge capacity decreases and the length of time it can be used shortens. Once the full-charge capacity is reduced by deterioration, it cannot be recovered and cannot reach the charging capacity of a new Battery Pack.

WORK ON THE BATTERY PACK OR POWER UNIT MUST ONLY BE CARRIED OUT BY QUALIFIED PERSONNEL.

DO:

- Use a genuine battery pack that is intended for this machine.
- Keep the battery pack clean and dry.
- Remove the battery pack from the power unit when carrying or checking it.
- Charge the battery pack in a recommended charging unit.

DO NOT:

- Touch the Battery Pack's connectors with metal objects or insert metal objects through openings into the Battery Pack.
- Allow the battery pack to come into contact with water.
- Allow children to use the Battery Pack. Store the Battery Pack out of the reach of children.
- Store the Battery Pack in a damp location. Doing so can cause a malfunction.
- Expose the battery pack to extreme temperatures (Below 5°C or above 40°C)
- Attempt to service a damaged battery pack.
- Subject the Battery Charger to excessive physical shock, such as by dropping or hitting it.
- Use the Battery Charger to charge anything other than approved Battery Packs. Use only authentic Battery Packs.
- Touch the battery pack terminals with metal. Mishandling them could result in electric shock or fire, which may kill or seriously hurt you. Follow the procedures and instructions provided in the manufacturer's manual.

CHARGER SAFETY

To reduce risk of injury, charge approved rechargeable batteries only. Other types of batteries may burst causing personal injury and damage.

This Battery Charger is not intended for use by children or persons with physical, sensory or mental limitations or a lack of experience or knowledge.

Continued use of the battery charger under unusual conditions could result in fire or electric shock.

DO NOT modify the battery charger. Modifying, disassembling or repairing the battery charger could result in fire or electric shock, which can cause death or serious injury.

Before using the battery charger / charging a battery pack, people who are using an electrical medical device must confirm how their device might be affected. The electromagnetic radiation produced during charging may affect the operation of electronic medical devices, which may kill or seriously hurt you.

If the battery pack leaks fluid or smells strangely, stop using it and contact your servicing agent. Battery pack contains combustible organic solvents as an electrolyte solution. Mistakenly handling them may result in burns or serious injuries.

DO NOT:

- Use the battery charger in locations where the Battery Charger becomes unstable.
- Use the battery charger in locations that are very cold or very hot, such as in direct sunlight or near a heater.
- Use the battery charger in locations exposed to water or excessive humidity.
- Use the battery charger in locations where children or pets might play with it.
- Charge Battery Packs if there is the risk of a lightning storm.
- Charge if the electric outlet is loose.
- Charge if the Battery Charger, AC cable, or the electric outlet is damaged or deformed, dusty, dirty, or rusty.
- Plug too many power cords into one electric outlet.
- Charge while the AC cable is wound up.
- Stand on or place heavy objects on the Battery Charger or AC cable.
- Pull or repeatedly bend the AC cable or charging cable with an excessive force.
- Touch the Battery Charger or AC cable if your hands are wet.
- Splash or submerge the Battery Charger or AC cable in water.
- Leave the AC plug plugged into the electric outlet after you have finished charging.
- Subject the Battery Charger to excessive physical shock, such as by dropping or hitting it.

BATTERY CHARGING

- The battery pack is not supplied fully charged. It is recommended to fully charge before use to ensure that the maximum run time can be achieved.
- Always allow the battery to complete 5 charge cycles (A cycle is defined as 100% - 0% - 100%) to enable the battery to reach its optimum capacity.
- This charger should only be used on a 230v AC 50/60Hz supply with a minimum load current of 10A.
- NOTE: Only charge compatible batteries with the charger.
- Plug the power lead into the charger body.
- Connect the power lead plug into a suitable rated mains power supply socket.
- Place the charger on a flat surface.
- Do not use the charger in any explosive atmospheres and keep away from combustible powders, water sprays or metallic dust or shavings.
- Slide the battery into the slot of the charger ensuring that the battery contacts are aligned with the charging blades.
- Gently push the battery firmly into the charger slot.
- Switch the power outlet on.
- The battery will only charge if the charge level is below 69%.
- The approved charger is a diagnostic charger. The charger LED light will illuminate in specific order to communicate the current battery status. They are as follows:

LED STATUS	BLINKING GREEN	SOLID GREEN	SOLID RED	BLINKING RED
Description	Charging	Fully Charged	Over Temperature*	Charging Fault*

* Refer to the Troubleshooting guide.

ASSEMBLY INSTRUCTIONS

There are three main parts:

- Main body (1)
- Lower handle (2)
- Upper handle (3)

STEP 1

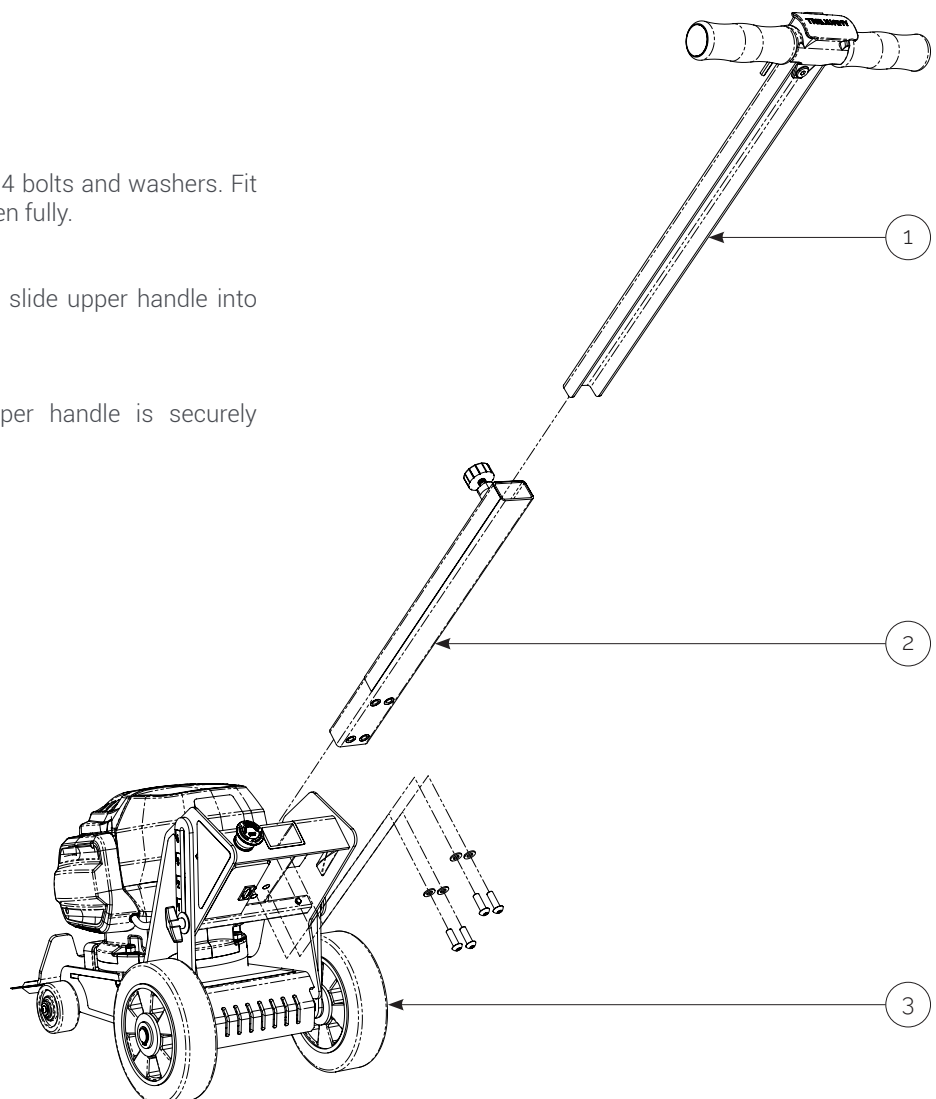
- Fit lower handle to main body with 4 bolts and washers. Fit all four bolts loosely first, then tighten fully.

STEP 2

- Pull the knob on lower handle and slide upper handle into lower handle tube.

STEP 3

- Secure by turning knob until upper handle is securely clamped in place.



HANDLE ADJUSTMENT

The handle has 7 height options for increased operator comfort.

STEP 1

- Loosen the handle knob by turning anti-clockwise.

STEP 2

- Pull handle knob towards you to release the retaining pin.

STEP 3

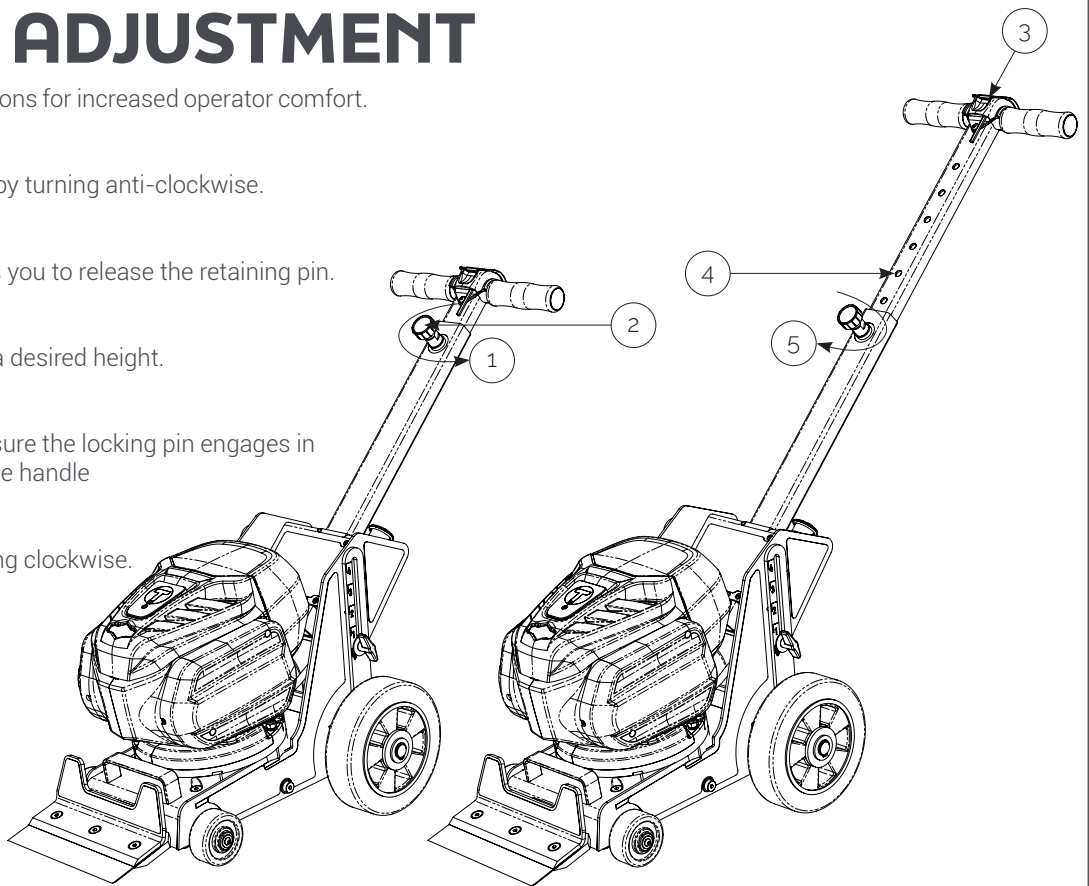
- Set the handle height to a desired height.

STEP 4

- Release handle knob, ensure the locking pin engages in one of the holes within the handle

STEP 5

- Secure the knob by turning clockwise. Do not over-tighten.



BLADE SET UP

A 5mm Allen key is supplied with the machine to enable quick changing of the blade.

STEP 1

- Ensure machine is switched off and isolated from power supply.

STEP 2

- Loosen the three Allen screws on top of the blade holder.

STEP 3

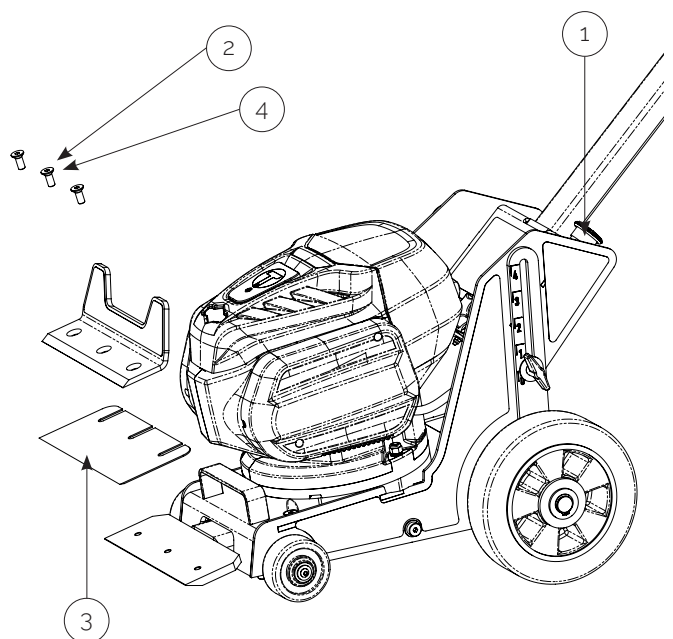
- Slide the blade in-between the blade holder plates. Ensure the blade is pushed all the way back

STEP 4

- Secure the blade in place by tightening the three Allen screws. Do not over tighten. Use the Allen key provided.

BLADE SETTING: Set the blade with the bevel facing upwards if using the machine on a concrete surface.

BLADE SETTING: Set the blade with the bevel facing downwards if using the machine on a wooden surface.



BLADE ANGLE ADJUSTMENT

The Blade 'angle of attack' can be easily adjusted to suit the material being removed.

STEP 1

- Loosen (do not remove) the T-handle on the left side of the machine, located above the back left hand wheel.

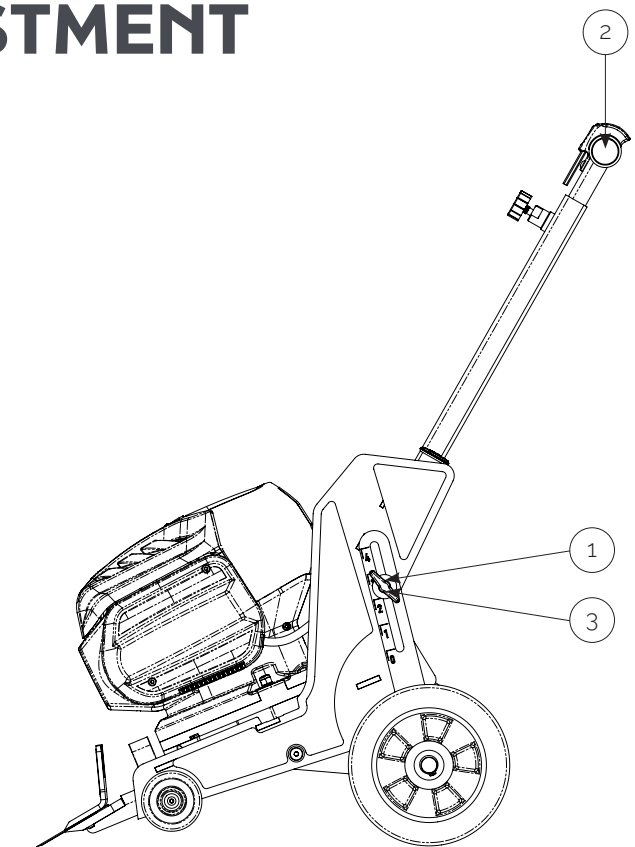
STEP 2

- Lift handle upwards (rear wheels should remain on the ground).

STEP 3

- When you reach the required angle tighten the T-handle firmly.

NOTE: Use the minimum angle required for your flooring material/application.



PRE START CHECKS (DAILY)

- Thoroughly inspect the machine for signs of damage.
- Check all bolts and screws for tightness. Ensure that all fittings are secure.
- Check condition of blade, blade attachment, blade mechanism and replace components as required.
- Ensure there is no excessive debris present on the machine.
- Ensure the battery is fully inserted into the power unit.
- Ensure the battery is sufficiently charged.
- Do not use the battery if it shows signs of damage/wear.
- If the battery is leaking fluid, place it in a secure location away from flammable materials and arrange for safe disposal.

STARTING WORK

- Manually remove any nails, studs, pins, rebar etc. from the area to be stripped before starting work. Attempting to strip with such items in place will damage the blade and/or machine.
- For large area vinyl floors or large carpet areas use a knife to score the material into manageable strips. Each strip should be slightly narrower in width than the blade fitted to the machine.
- Before starting the motor, increase the "angle of attack" of the blade to the desired level until the blade makes contact with the underside of the surface to be stripped. Ensure the blade is NOT in contact with the target surface before starting the machine.

OPERATION

INSERTING THE BATTERY

- Select a compatible battery and check that it is in good operational condition. If the battery shows signs of impact damage, emits any liquid or has an unusual smell or feels hot.
DO NOT USE.
- Check the charge value by pressing the charge indicator button. If the battery has sufficient charge then proceed to insert the battery into the motor housing.
- Open the battery cover on the power unit.
- Hold the battery with two hands. One hand should grab the battery from the top with the charge display facing upwards, gripping it across the two short sides. The second hand should hold the battery around the middle.
- Slide the base of the battery into its housing using the side rails to locate.
- Remove your hand from the middle keeping hold of the battery from the top and allow the battery to slide fully into the housing.
- Once fully inserted, press down on top of the battery until the battery retaining latch clicks into position and locks the battery in place. Close the battery cover.

CHECKING BATTERY LEVEL

- Push the red battery charge level button on top of the battery whilst it is inserted into the power unit.
- The power level will show up on the digital display in numerical format.

STARTING THE MACHINE

- Set the machine handle at a comfortable height.
- Set the machine blade angle at the required height. (see Blade Angle Adjustment section)
- Ensure the red isolator key is fully inserted. This is located next to the battery. (The machine will not start without this key fitted)
- Ensure the Emergency Stop button is released. Twist the button to release if required.
- Press down on the handle to tilt the machine back slightly, lifting the blade off the ground and away from any flooring media or objects.
- While firmly holding the machine with one hand press the green start button on the front of the machine.
- Allow the motor to get up to speed before starting work.

STOPPING THE MACHINE

- During normal operation press the red button on the NVR switch to stop the machine.
- In an emergency or potential emergency situation use the mushroom-style Em-Stop button located near the base of the machine handle.
- The machine can be stopped by removing the isolator key.
- **NOTE:** If the Emergency stop button is released or the Isolator key is refitted after stopping the machine, it will NOT automatically restart the machine. The green start button on the NVR switch will need to be pressed again.

MACHINE OPERATION

- Complete a small area observing the performance; angle of attack, inspect the finish produced.
- **DO NOT ADJUST THE BLADE ANGLE WHILST THE MACHINE IS IN OPERATION.**
- Remember let the machine do the work before exerting excess pressure through the handle or foot plate. Tests have proved conclusively that heavy downward pressure reduces blade life and increases risk of "sticking" under the target surface by over 50%.
- Avoid metal objects lodged in the floor as this will cause damage to the machine.
- **DO NOT** use on wet or damp surfaces due to the inherent danger of the water ingress. Motors and switches are not totally waterproof; but are protected to IP44; take special care to protect them from water to ensure safety.
- The TFS230 is designed to be used in a forward motion; the oscillation of the blade also helps with the operation. The operator can vary the speed of travel and angle of adjustment to determine the final finish.
- In an emergency, when the blade must be lifted quickly from the work surface, it is not necessary to turn off the machine, simply tilt backwards on the handlebar to lift the front wheels off the floor.
- **DO NOT** move the machine around the work area with the blade in the air, without a blade protector in place. The risk of shin injury to persons in the workspace is high.
- **DO NOT** leave the machine running and unattended at any time. Ensure the blade protector is in place at all times when not in use.
- PPE must be worn at all times.

REMOVING THE BATTERY

- Stop the machine by pressing the red stop button or Em-Stop.
- Open the battery cover.
- Push down on top of the battery and at the same time press and release the battery retaining latch. Remove your hand from the top of the battery and it should rise slightly.
- Grip the top of the battery with one hand across the 2 short faces and lift slowly.
- Once the battery is half way out grip the middle of the battery with the second hand.
- Lift the battery from the battery housing.
- If the battery needs to be charged then carefully move it to the battery charger.
- If the battery is to be stored, place the battery in a dry place away from direct sunlight or excessive temperatures. It is recommended to store the battery between +6°C to +40°C.

NOTE: Do not transport the machine with the battery fitted.

SERVICING & MAINTENANCE

SAFETY

- Only a competent person, in a suitably equipped workshop, must carry out maintenance.
- **ALWAYS** read and understand the operators manual before carrying out any maintenance.
- Before carrying out any maintenance switch off the motor and remove the battery.
- Use personal protective equipment when carrying out any maintenance or servicing.
- DO NOT use a Pressure Washer on the machine.
- Remove the blade from the machine and store in the blade transit holder at the base of the handle.

GENERAL MAINTENANCE

- After use, clean the machine to remove all build up of dust and surface residues.
- Check the drive elements for build up of deposits and any trapped debris etc. Check the underside for damage. Serious damage could result to the drive shaft, bearings and drive motor if the blade mechanism is obstructed.

FUSE CHECK & REPLACEMENT

- Isolate the power supply by removing the battery.
- The fuse is located within the control box on the back of the machine.
- Using a blade fuse puller or a pair of needle-nose pliers. Gently grip the edge of the fuse and pull it out, gently rocking it side to side if there's too much resistance.
- Inspect fuse for continuity, verifying with a multimeter if in any doubt. Replace fuse with a new 15A fuse of the same fitment type if necessary.
- If fuse blows again shortly after replacement, contact your authorised dealer for technical assistance.

POWERHEAD & BATTERY MAINTENANCE

- If the powerhead suspects an error it will emit a series of beeps. Please count the number of beeps and contact your local Representative. DO NOT open the powerhead casing.
- If you suspect an issue with the powerhead or battery please contact your local Trelawny Representative. DO NOT open the powerhead casing.

LUBRICATION

The machine is equipped with a built in lubrication port for easy, re-lubrication with no machine disassembly required.

- The lubrication port is compatible with most conventional 6mm, 4-jaw grease gun couplings. The machine must **ONLY** be lubricated with approved LGHB 2/0.4 Mineral Oil Grease, available from Trelawny SPT Ltd. Use of any other lubricants may cause damage to the machine and will invalidate any manufacturer's warranty
- Ensure machine is cool. Attempting to lubricate a machine at close to running temperature can cause burns or other injury.
- Tilt machine gently onto its side, laying down a blanket or other soft material to protect the side casings of the motor.
- Locate the grease port, and wipe clean with a clean cloth.
- Push the grease gun coupling onto the grease nipple **IN LINE WITH THE NIPPLE** – applying excess sideways force could shear the nipple from the housing causing damage to the lubrication system.
- With the grease coupling tight on the grease nipple, dispense 0.75-1ml of grease into the product. For most conventional manual grease guns this is 1 pump on the handle, after priming. **DO NOT** overfill the machine with lubricant; this can damage the running gear of the machine. If you suspect the bearing has been overfilled, contact Trelawny for technical advice.
- Check around coupling to ensure lubricant has been dispensed into the grease nipple, and not leaked around it.
- Remove the grease gun from the nipple by firmly pulling away, noting that excess sideways force could shear the nipple from the housing causing damage to the lubrication system.
- Wipe clean the grease nipple with a clean cloth.
- Reinststate machine onto its wheels, and test-run for 30 seconds whilst running freely (not under load) to distribute lubricant correctly. Observe machine running and sound for smooth operation. Stop & inspect machine if running does not appear smooth or any irregular noises are observed.

MACHINE STORAGE

Short period storage: up to 3 months

- Remove battery and store in a dry place.
- Clean outside of machine, inspect the moving parts for wear; replace any worn parts as required.
- Remove any build up of material from inside the mechanical area.
- Cover the machine to protect it: Store in a dry place.
- Check security of all fastenings after any lay up period. See also motor manufactures operation and maintenance instruction book.

Long period storage: over 3 months

- Remove battery and store in a dry place.
- Clean the outside of the machine, inspect for wear; replace any worn parts as required.
- Remove any build up of material from inside the mechanical area.
- Cover the machine to protect it: Store in a dry place.
- After any long lay up period be sure to check the security of all fastenings.
- Ensure blade is removed and stored safely.

MAINTENANCE SCHEDULE

MAINTENANCE	EACH USE	30 HRS	70 HRS
Examine the general condition of the machine	✓		
Check blade wear and sharpness	✓		
Clean external surfaces of the machine	✓		
Check all bolts and screws for tightness	✓		
Examine the battery for any damage	✓		
Ensure that the battery is charging properly	✓		
Check that the battery release buttons are working correctly and that the battery locks into the product securely	✓		
Inspect the battery charger for any damage and ensure it is working correctly.		✓	
Perform electrical inspection (Switch & E-STOP)		✓	
Check height adjustment assembly		✓	
Check stripping head movement		✓	
Grease motor bearing		✓	
Strip down and service stripping head assembly			✓
Inspect (replace if necessary) wear strip			✓

PPE & WARNING SYMBOLS

SYMBOL / WARNING	DESCRIPTION	SYMBOL / WARNING	DESCRIPTION
	ALWAYS Read the manual		Caution assisted lift only
	Wear protective glasses		Caution crush point
	Wear ear defenders		Caution pinch point
	Wear protective shoes		Remove battery before servicing machine
	Wear protective gloves		Lift lid carefully
	DO NOT pressure wash the powerhead		

TROUBLESHOOTING

POWER UNIT & OPERATION

FAULT	POSSIBLE CAUSE	ACTION
The Power unit does not start	The battery is not fully inserted	Check the connection between the battery and the battery port. Ensure the battery clicks into place.
	The battery is not charged	Check digital charge status. Charge the battery.
	The Isolator key is not inserted	Insert the Isolator key.
	The fuse may have blown	Isolate the power supply by removing the battery. The fuse is located on the back of the control box. Check fuse and replace if necessary. 15amp fuse only.
	The Start/Stop button is faulty	Fault find the switch and replace if necessary.
	Battery may need replacing	Replace the battery.
The machine stops during operation and an alarm can be heard	The motor has been overloaded	Press the stop button and leave the machine to cool for 3-4 minutes. Restart the machine by pressing the start button.
Stripping head not removing material effectively	Blade blunt/damaged/clogged.	Inspect stripping blade. Carefully clean or replace blade if required.
	Blade incorrectly installed.	Check blade installation for squareness & tightness. Blade should have bevel facing up for most flooring media.
	Incorrect/inefficient stripping head angle.	Adjust stripping angle as required. Use the minimum angle possible for media to be removed.
	Stripping sheet materials, such as vinyl or carpet.	Use a knife to score the material into strips slightly narrower than the blade fitted to the machine. Use the left hand side of the blade.
	Eccentric bearing failure.	Replace.
Unexpected noise/rattling.	Motor/drivetrain wear.	Switch off & Isolate power to machine. Carefully inspect motor & free-moving parts.
	Worn or loose fixings/ fasteners.	Switch off & isolate power to machine. Carefully inspect fixings, pivots etc. tighten any loose fasteners.

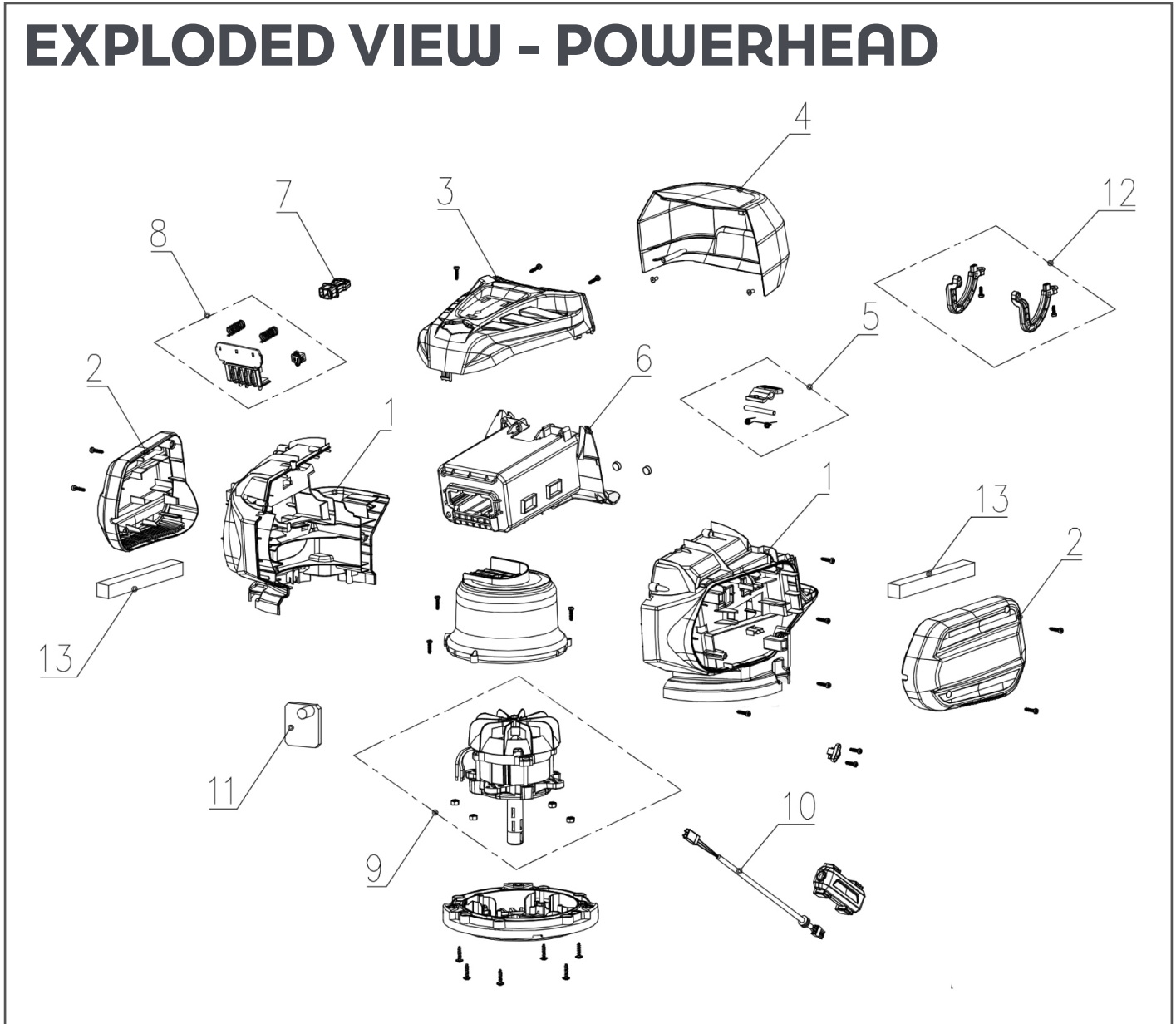
BATTERY PACK & CHARGER

FAULT	POSSIBLE CAUSE	ACTION
Charging does not start.	The AC plug is not connected to an electric outlet.	Connect the AC plug to an electric outlet
	The power cable is not connected to the battery unit.	Connect the power cable to the battery unit correctly.
	Charger may be too hot or too cold.	Move the charger and battery pack to a location where the ambient temperature is between +6°C to +40°C.
	Battery level is above 70%	Discharge battery to less than 70% charge.
Charging stops mid cycle	Charger fault	Turn off charger for 60 seconds and restart.
Charging LED illuminates RED during charging.	Battery pack is too hot.	Remove the battery pack from the charger and allow to cool for at least 30 minutes. Re-insert battery pack once cool.
Charging LED flashes RED during charging.	Charging fault.	Remove the battery pack & unplug the charger. Wait 1 minute, plug the charger back in & re-insert the battery pack.
Charging LED still flashes RED during charging.	Faulty battery pack.	Replace battery pack. Dispose of faulty battery pack safely. See local guidance for advice on the safe disposal of Li-Ion batteries.

PARTS LIST - MACHINE

ITEM	PART NO.	DESCRIPTION	QTY	ITEM	PART NO.	DESCRIPTION	QTY
1	990.0049	Chassis Metalwork Assy	1	44	323.3509A	Stripping Blade 230mm	1
2	824.0800	Locking Nut	5	45	990.1059	Stripping Head Blade Plate	1
3	812.1080	Washer	6	46	875.1199	CSK Hex Screw	3
4	990.0035	Stripper Arm Wear Strip Assembly	1	47	875.1290	Hex Bolt	4
5	853.0830	CSK Hex Screw	4	48	812.1060	Washer	8
6	990.1122	Blade Transit Holder Bracket	1	49	824.0600	Locking Nut	4
7	872.0412	Screw	4	50	875.1226	Compression Spring	1
8	875.1474	Male Petal Handwheel	1	51	875.1198	Disc Bearing	1
9	875.1510	Vinyl Tape	1	52	990.0037	Bearing Housing Assembly	1
10	875.1270	Square Nut	2	53	875.1188	Polymer Flanged Bush	1
11	990.1076	Wheel Stub Axle	2	54	875.1287	Flanged Nut	2
12	812.0712	Washer	4	55	875.1188	Polymer Flanged Bush	3
13	320.9120	Wheel 75mm	2	56	875.1248	Polymer Washer	2
14	812.2060	Washer	2	57	875.1288	Shim Washer	2
15	852.0612	Button Head Hex Screw	2	58	990.1052	Stripping Head Pivot Arm	1
16	990.0014	Rear Wheel Linkage Assembly	1	59	990.1051	Stripper Arm Brace Bar	1
17	350.9121	Wheel 200mm	2	60	875.1300	Threadlock Medium Strength	3
18	875.1195	Nylon Shoulder Washer	2	61	811.1008	Locking Washer	1
19	812.1001	Washer	2	62	875.1450	Polymer Washer	1
20	814.1020	Circlip	2	63	875.1280	Shim Washer	1
21	990.1041	Rear Wheel Height Linkage LH	1	64	875.1246	Thrust Washer	2
22	990.1075	Rear Wheel Height Linkage RH	1	65	875.1196	Washer	1
23	875.1187	Shoulder Screw	4	66	323.9104	Clamping Spring Plunger	1
24	812.0710	Washer	4	67	861.4018	Cable Gland	1
25	875.1193	Nylon Shoulder Washer	3	68	990.0058	1.5kW Powerhead Assembly	1
26	990.0020	Height Adjustment Tube Metalwork	1	69	990.1121	T Logo Infill Plaque	1
27	812.2010	Washer	1	70	875.1469	Torx Head Polymer Screw	1
28	857.1010	Male Wing Screw	1	71	990.0053	Motor Mounting Plate Assy	1
29	875.1216	Nylon Washer	1	72	831.0860	Hex Bolt	1
30	875.1194	Nylon Shoulder Washer	1	73	875.1467	Locking Washer Pair	3
31	875.1293	Hex Bolt	1	74	875.1457	Custom Hex Bolt	1
32	812.1040	Washer	2	75	875.1448	CSK Hex Screw	1
33	875.1215	Locking Nut	1	76	875.1281	Emergency Stop Button	1
34	990.0023	Handle Upper Metalwork Assy	1	77	990.0059	Electrics Cover Assembly	1
35	991.1030	Rubber Grip	2	78	875.1453	Latching On-Off Switch	1
36	875.1037	Tube End Cap	2	79	853.0416	CSK Hex Screw	4
37	852.0616	Button Head Hex Screw	1	80	990.1109	Motor Spindle Bushing	1
38	875.1305	Barrel Nut	1	81	320.9129	Square Key, Round Ends	1
39	990.1091	Upper Handle Cable Guide	1	82	875.1442	Disc Spring	1
40	805.0501	Hex Key	1	83	875.1456	Washer	2
41	990.0019	Central Handle Mid Sleeve Assy	1	84	875.1443	Hex Screw	1
42	875.1219	Button Head Hex Screw	4	85	875.1470	Blade Fuse Holder	1
43	990.0017	Stripping Head Metalwork Assembly	1	86	875.1471	Blade Fuse - 15A	1

EXPLODED VIEW - POWERHEAD



PARTS LIST - POWERHEAD

ITEM NO.	PART NO.	DESCRIPTION	QUANTITY
1	875.1498	Main Cover Assembly	1
2	875.1499	Side Cover Assembly	1
3	875.1500	Upper Cover Assembly	1
4	875.1501	Lid Assembly	1
5	875.1502	Battery pack Release Button Assembly	1
6	875.1503	Battery Box	1
7	875.1504	Isolator Key	1
8	875.1505	Terminal Assembly	1
9	875.1506	Brushless Motor Assembly	1
10	861.3618	Motor Cable Assembly	1
11	875.1507	PCBA	1
12	875.1508	Hinge Assembly	1
13	875.1509	Dust Screen	1

TECHNICAL SPECIFICATIONS

DETAIL	MODEL
Part Code	323.2510 / 323.2515
Description	TFS230 VM 82v Battery
Motor Power	1.5 kW
Motor Type	Brushless
Motor Speed	2,600 rpm
Blade Width	230 mm
Length	1000 mm
Width	350 mm
Height	860 mm
Weight	34 kg
Sound Pressure Level (LpA)	76.8 dB(A)
Sound Power Level (LwA)	91.1 dB(A)
Vibration Level	16.3 m/s ²
Trelawny SPT Ltd operates a policy of continuous product development and refinement and therefore reserves the right to change technical specifications and product designs without giving prior notice.	

DETAIL	5Ah Battery	8Ah Battery
Battery Type	Li-Ion	Li-Ion
Max Voltage	82v	82v
Nominal Voltage	72v	72v
Energy Rating	360Wh	580Wh
Energy Capacity	5Ah	8Ah
80% Charge Time	28 mins	48 mins
100% Charge Time	39 mins	65 mins
Length	120 mm	120 mm
Width	90 mm	90 mm
Height	214 mm	240 mm
Weight	2.8 kg	3.9 kg

DETAIL	Battery Charger
Input Voltage	230v
Input Cycle	50/60Hz
Output Voltage	82v
Output Current	8A
Length	230 mm
Width	170 mm
Height	170 mm
Weight	2.0 kg

THE PERFECT FINISH
STARTS WITH
TRELAWNY



DEALER STAMP:



CONTACT US

Trelawny SPT Limited

Trelawny House, 13 Highdown Road, Sydenham Industrial Estate,
Leamington Spa, Warwickshire, CV31 1XT, United Kingdom

Telephone: +44 (0)1926 883781

Email: sales@trelawny.com

Website: www.trelawny.com

Manual Part Number:

735.7100 01

CERTIFIED
ISO 9001



0008